

Converting Colors

HunterLab(16.3870, 5.8142,
2.5144)

Have a look what the booklet for
HunterLab(16.3870, 5.8142, 2.5144)
contains.

HunterLab(16.3337, 6.1207, 2.5570)	3
<i>Conversions</i>	4
<i>Details</i>	6
<i>Harmonies</i>	12
<i>Previews</i>	24
<i>Color Blindness Simulation</i>	28
<i>CSS Examples</i>	31

Color

**HunterLab(16.3337, 6.1207,
2.5570)**

Conversions

Conversions Part 1

Format	Color
Hex	3F2729
RGB	63, 39, 41
RGB Percent	25%, 15%, 16%
CMY	0.7529, 0.8471, 0.8392
CMYK	0.00, 0.38, 0.35, 0.75
HSL	355°, 24%, 20%
HSV	355°, 38%, 25%
XYZ	3.1757, 2.6679, 2.4454
YIQ	46.4040, 13.6620, 5.7100

Conversions

Conversions Part 2

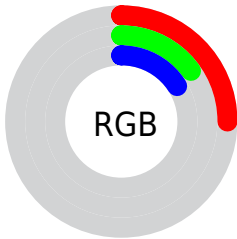
Format	Color
RYB	63, 39, 41
Decimal	4138793
CIELab	18.66, 11.64, 3.33
CIELCh	19, 12.104, 15.988
Yxy	2.6680, 0.3831, 0.3219
Android (android.graphics.Color)	4282328873 (0xFF3F2729)
YUV	46.4040, -2.6642, 14.5547
Hunter-Lab	16.3337, 6.1207, 2.5570

Details

The HunterLab color **16.3337, 6.1207, 2.5570** is a dark color, and the websafe version is hex **333333**. A complement of this color would be **20.7927, -6.7127, 0.1051**, and the grayscale version is **16.6683, -0.8894, 0.9056**.

A 20% lighter version of the original color is **32.3377, 7.0649, 3.9080**, and **3.1868, 5.4575, 2.0592** is the 20% darker color. If you saturate the color by 10%, you get **15.0023, 8.1585, 3.0336**, and if you desaturate by 10%, it is **17.7766, 4.1200, 2.1353**.

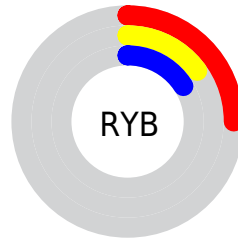
Distribution



Red (25%)

Green (15%)

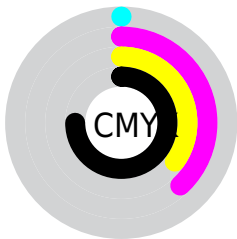
Blue (16%)



Red (25%)

Yellow (15%)

Blue (16%)

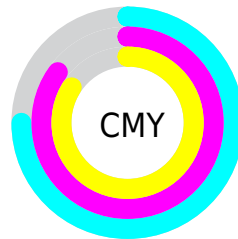


Cyan (0%)

Magenta (38%)

Yellow (35%)

Black (75%)



Cyan (75%)

Magenta (85%)

Yellow (84%)

Brightness & Saturation Gradients

These gradients show how the HunterLab color 16.3337, 6.1207, 2.5570 changes by changing the brightness by 10 percent. The first figure shows a shift by +10% for each color and the second figure -10%.

Similar to the brightness gradients but the following saturation gradients show a change of the HunterLab color 16.3337, 6.1207, 2.5570 by changing the saturation by 10% instead.

■ 16.3337, 6.1207,
2.5570

■ 16.3337, 6.1207,
2.5570

■ 111.4075, 6.5969,
9.3594

■ 9.8030, 5.5578,
1.9568

■ 32.3476, 6.8117,
3.8995

0.0000, INF, NaN

0.0000, NaN, NaN

■ 41.6186, 6.9952,
4.6045

0.0000, NaN, NaN

■ 51.6373, 7.0928,
5.3344

0.0000, NaN, NaN

0.0000, NaN, NaN

■ 62.3514, 7.1153,
6.0896

0.0000, NaN, NaN

■ 73.7186, 7.0711,
6.8700

0.0000, NaN, NaN

■ 85.7032, 6.9666,

0.0000, NaN, NaN

7.6754

98.2749, 6.8072,
8.5054

16.3337, 6.1207,
2.5570

16.3337, 6.1207,
2.5570

15.0023, 8.1585,
3.0336

17.7766, 4.1200,
2.1353

13.8001, 10.1997,
3.5619

19.3140, 2.1754,
1.7651

12.7486, 12.1807,
4.1322

20.9328, 0.2915,
1.4420

11.8696, 14.0067,
4.7223

22.6223, -1.5333,
1.1606

11.1645, 15.6113,
5.2846

24.3738, -3.3035,
0.9156

■ 10.4727, 17.4274,
5.7263

■ 26.1798, -5.0253,
0.7019

■ 10.3357, 17.8114,
5.8164

■ 28.0347, -6.7048,
0.5154

■ 29.9334, -8.3481,
0.3523

■ 31.8719, -9.9606,
0.2094

Harmonies

Analogous

The Analogous color harmony consists of three colors that are next to each other on the color wheel.



16.3341, 6.1899, -0.7396



16.3337, 6.1207, 2.5570



16.3341, 4.0759, 4.8586

Triad

The Triadic color harmony groups three colors that are evenly spaced from another and form a triangle on the color wheel.



16.3341, 6.1200, 2.5573



16.3341, -5.4398, 4.7439



16.3341, -2.4715, -6.6293

Complementary

The Complementary color scheme is a pair of colors which are on the opposite of each other on the color wheel.



16.3337, 6.1207, 2.5570



20.7927, -6.7127, 0.1051

Split Complementary

Split-complementary colors differ from the complementary color scheme. The scheme consists of three colors, the original color and two neighbors of the complement color.



16.3341, -5.2938, -4.4229



16.3337, 6.1207, 2.5570



16.3341, -6.9073, 2.3656

Square

The Square scheme is like the rectangle color scheme, but the four colors are evenly spaced on the color wheel.



16.3341, 6.1200, 2.5573



16.3341, -2.6865, 5.9271



16.3341, -6.8562, -0.9760



16.3341, 1.0245, -6.5475

Rectangle

The Rectangle color scheme consists of four colors that form a rectangle on the color wheel.



16.3337, 6.1207, 2.5570



16.3341, 1.9598, 5.7259



16.3341, -6.8562, -0.9760



16.3341, -3.5239, -6.1134

Sweetspot

The Sweet Spot groups the original color and five complimentary colors.



16.3341, 6.1200, 2.5573



26.4155, 1.1955, 2.0047



16.7396, 8.5314, -6.1921



13.5121, 0.6571, 1.0357



62.6995, -3.3455, 3.4066



14.8260, -0.7911, 0.8055

Same Dimension

The Same Dimension uses a secret algorithm to generate beautiful new colors.



16.3341, 6.1200, 2.5573



19.4650, 10.5496, 3.9260



18.4391, 1.7540, 5.2203



10.8483, 0.1794, 0.7536



15.5417, 26.7264, 9.1839



39.4350, 67.6483, 24.5926

Inverse Universe

The Inverse Universe completely reimagines the original color for something new.



16.3341, 6.1200, 2.5573



19.4650, 10.5496, 3.9260



18.2662, -2.5798, -4.0539



10.8483, 0.1794, 0.7536



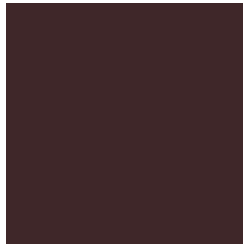
15.5417, 26.7264, 9.1839



39.4350, 67.6483, 24.5926

Previews

White Background



This preview shows how the HunterLab color 16.3337, 6.1207, 2.5570 looks on a white background.

Color Contrast Check

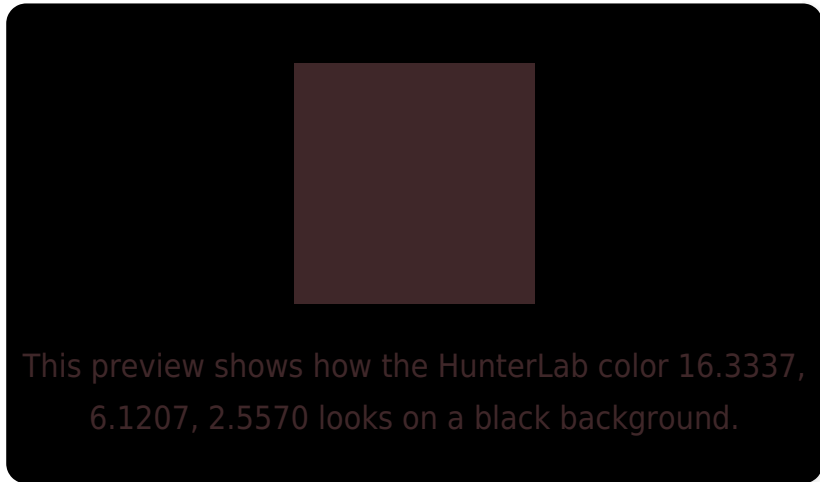
Large Text (above 18pt) WCAG AA ✓ Pass

Any Text WCAG AA ✓ Pass

Large Text (above 18pt) WCAG AAA ✓ Pass

Any Text WCAG AAA ✓ Pass

Black Background



Color Contrast Check

Large Text (above 18pt) WCAG AA × Fail

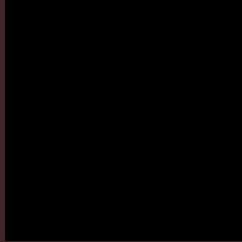
Any Text WCAG AA × Fail

Large Text (above 18pt) WCAG AAA × Fail

Any Text WCAG AAA × Fail

If you want to check with other color combinations, try the [Color Contrast Checker](#).

HunterLab 16.3337, 6.1207, 2.5570 Background



This preview shows how black text looks on a background with the HunterLab color 16.3337, 6.1207, 2.5570.

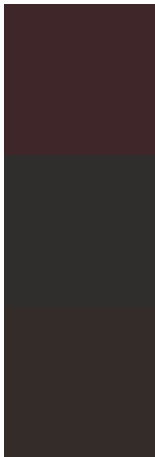


This preview shows how white text looks on a background with the HunterLab color 16.3337, 6.1207,

Color Blindness Simulation

Color vision deficiency is a very complex topic, and I could not describe the different causes any better than Wikipedia does, so if you want to learn more, you should check out their [article about color blindness](#).

Dichromacy



Original Color

16.3337, 6.1207, 2.5570

Protanopia

16.5765, -0.7642, 1.3212

Deuteranopia

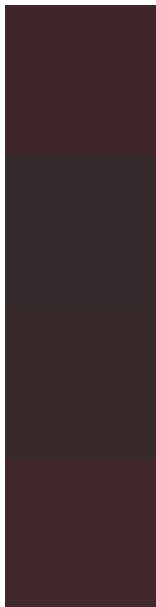
16.3848, 0.7394, 2.8450



Tritanopia

16.3553, 6.2299, 2.2464

Trichromacy



Original Color

16.3337, 6.1207, 2.5570

Protanomaly

16.3294, 1.8856, 1.4432

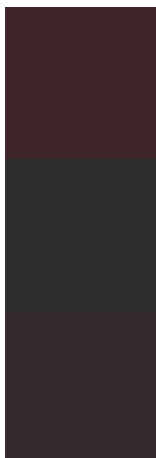
Deuteranomaly

16.2785, 2.6748, 2.7658

Tritanomaly

16.3553, 6.2299, 2.2464

Monochromacy



Original Color

16.3337, 6.1207, 2.5570

Achromatopsia

16.5290, -0.8819, 0.8981

Achromatomaly

16.2471, 1.6124, 1.3438

CSS Examples

Text

The CSS property to change the color of the text to HunterLab 16.3337, 6.1207, 2.5570 is called "color". The color property can be set on classes, ids or directly on the HTML element.

This example shows how text in the color `rgb(63, 39, 41)` looks like.

```
.text, #text, p{  
    color:rgb(63, 39, 41)  
}
```

If you want to add a text shadow in that color use the text-shadow property, you can generate a text shadow directly with our [CSS Text Shadow Generator](#).

Here you see how black text with a 4 pixel rgb(63, 39, 41) colored shadow looks like.

```
.shadow{ text-shadow: 4px 4px 2px rgb(63, 39, 41) }
```

Border

The CSS property to change the border of an element to HunterLab 16.3337, 6.1207, 2.5570 is called "border". The border property can be set on classes, ids or directly on the HTML element.

This example shows the color as border, it can be applied via the CSS property "border" or "border-color".

```
.border, #border, table{ border:4px solid rgb(63, 39, 41) }
```


If only the border color should be changed use the property `border-color`.

```
.border{ border-color:rgb(63, 39, 41) }
```

If you want to add a box shadow in that color use:

Here you see how a box with a 4 pixel `rgb(63, 39, 41)` colored shadow looks like.

```
.boxshadow{ -moz-box-shadow:4px 4px 4px  
4px rgb(63, 39, 41); -webkit-box-  
shadow:4px 4px 4px 4px rgb(63, 39, 41);  
box-shadow:4px 4px 4px 4px rgb(63, 39, 41)  
}
```

Background

The CSS property to change the background color of an element to HunterLab 16.3337, 6.1207, 2.5570 is called "background". The background property can be set on classes, ids or directly on the HTML element.

```
.background, #background, body{  
background: rgb(63, 39, 41) }
```

If only the background color should be changed can be used:

```
.background{ background-color: rgb(63, 39,  
41) }
```

This example shows the color as background, it is applied via the CSS property "background".

To optimize and compress your CSS code, you can use our [online CSS compressor and optimizer](#) based on csstidy. If you want to create a linear or radial gradient as background or border, check our [CSS Gradient Generator](#).

Hey! You found this booklet interesting? Support Converting Colors with the new Membership Option!

The pro membership hides all ads, plus gives you double the colors in the color bucket, and more awesome pro features!

[Learn more, Memberships starting at \\$2.50/m!](#)

**Follow me
on Twitter!**

@ConvertingColor