

Converting Colors

HunterLab(16.4243, 7.4850,
0.1472)

Have a look what the booklet for
HunterLab(16.4243, 7.4850, 0.1472)
contains.

HunterLab(16.4000, 7.6634, 0.1305)	3
<i>Conversions</i>	4
<i>Details</i>	6
<i>Harmonies</i>	12
<i>Previews</i>	24
<i>Color Blindness Simulation</i>	28
<i>CSS Examples</i>	31

Color

**HunterLab(16.4000, 7.6634,
0.1305)**

Conversions

Conversions Part 1

Format	Color
Hex	402630
RGB	64, 38, 48
RGB Percent	25%, 15%, 19%
CMY	0.7490, 0.8510, 0.8118
CMYK	0.00, 0.41, 0.25, 0.75
HSL	337°, 25%, 20%
HSV	337°, 41%, 25%
XYZ	3.3410, 2.6896, 3.1393
YIQ	46.9140, 12.2860, 8.6220

Conversions

Conversions Part 2

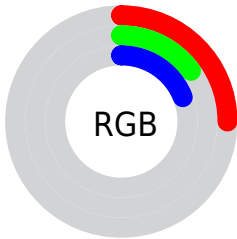
Format	Color
RYB	64, 38, 48
Decimal	4204080
CIELab	18.76, 13.98, -1.40
CIELCh	19, 14.050, 354.264
Yxy	2.6897, 0.3643, 0.2933
Android (android.graphics.Color)	4282394160 (0xFF402630)
YUV	46.9140, 0.5354, 14.9844
Hunter-Lab	16.4000, 7.6634, 0.1305

Details

The HunterLab color **16.4000, 7.6634, 0.1305** is a dark color, and the websafe version is hex **333333**. A complement of this color would be **20.8453, -8.2323, 2.7734**, and the grayscale version is **16.8272, -0.8979, 0.9143**.

A 20% lighter version of the original color is **32.4120, 8.9454, 0.7574**, and **3.8565, 6.6043, 2.4919** is the 20% darker color. If you saturate the color by 10%, you get **15.1129, 9.8832, 0.1134**, and if you desaturate by 10%, it is **17.8012, 5.4334, 0.2674**.

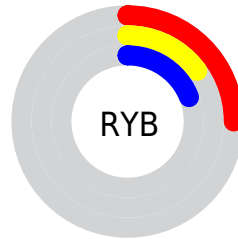
Distribution



Red (25%)

Green (15%)

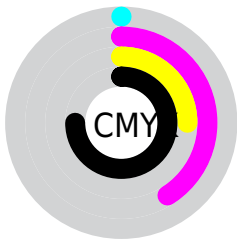
Blue (19%)



Red (25%)

Yellow (15%)

Blue (19%)

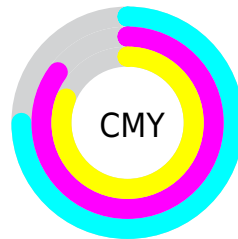


Cyan (0%)

Magenta (41%)

Yellow (25%)

Black (75%)



Cyan (75%)

Magenta (85%)

Yellow (81%)

Brightness & Saturation Gradients

These gradients show how the HunterLab color 16.4000, 7.6634, 0.1305 changes by changing the brightness by 10 percent. The first figure shows a shift by +10% for each color and the second figure -10%.

Similar to the brightness gradients but the following saturation gradients show a change of the HunterLab color 16.4000, 7.6634, 0.1305 by changing the saturation by 10% instead.

■ 16.4000, 7.6634,
0.1305

■ 16.4000, 7.6634,
0.1305

■ 111.5332, 9.1873,
4.6517

■ 9.8589, 6.9461,
-0.1124

■ 32.4308, 8.6351,
0.8171

0.0000, INF, NaN

0.0000, NaN, NaN

■ 41.7091, 8.9458,
1.2416

0.0000, NaN, NaN

■ 51.7345, 9.1632,
1.7125

0.0000, NaN, NaN

■ 62.4550, 9.2993,
2.2261

0.0000, NaN, NaN

0.0000, NaN, NaN

■ 73.8281, 9.3632,
2.7791

0.0000, NaN, NaN

■ 85.8184, 9.3622,

0.0000, NaN, NaN

3.3691

98.3955, 9.3020,
3.9939

16.4000, 7.6634,
0.1305

16.4000, 7.6634,
0.1305

15.1129, 9.8832,
0.1134

17.8012, 5.4334,
0.2674

13.9569, 12.0433,
0.2365

19.2994, 3.2252,
0.5029

12.9520, 14.0639,
0.5191

20.8819, 1.0531,
0.8200

12.1178, 15.8382,
0.9723

22.5375, -1.0770,
1.2044

11.4263, 17.3840,
1.5442

24.2573, -3.1649,
1.6443

■ 10.7635, 19.0694,
2.0198

■ 26.0336, -5.2131,
2.1306

■ 27.8605, -7.2255,
2.6560

■ 29.7327, -9.2066,
3.2146

■ 31.6460, -11.1607,
3.8019

Harmonies

Analogous

The Analogous color harmony consists of three colors that are next to each other on the color wheel.



16.4004, 5.9745, -4.0795



16.4000, 7.6634, 0.1305



16.4004, 6.8885, 3.6676

Triad

The Triadic color harmony groups three colors that are evenly spaced from another and form a triangle on the color wheel.



16.4004, 7.6627, 0.1308



16.4004, -3.9706, 6.3341



16.4004, -5.2023, -6.3755

Complementary

The Complementary color scheme is a pair of colors which are on the opposite of each other on the color wheel.



16.4000, 7.6634, 0.1305



20.8453, -8.2323, 2.7734

Split Complementary

Split-complementary colors differ from the complementary color scheme. The scheme consists of three colors, the original color and two neighbors of the complement color.



16.4004, -7.4200, -2.4719



16.4000, 7.6634, 0.1305



16.4004, -6.7590, 4.6737

Square

The Square scheme is like the rectangle color scheme, but the four colors are evenly spaced on the color wheel.



16.4004, 7.6627, 0.1308



16.4004, -0.0862, 6.7083



16.4004, -7.9610, 1.6197



16.4004, -1.6511, -8.3799

Rectangle

The Rectangle color scheme consists of four colors that form a rectangle on the color wheel.



16.4000, 7.6634, 0.1305



16.4004, 5.1152, 5.2863



16.4004, -7.9610, 1.6197



16.4004, -6.1141, -5.2020

Sweetspot

The Sweet Spot groups the original color and five complimentary colors.



16.4004, 7.6627, 0.1308



27.1024, 1.9319, 0.9928



15.9052, 7.1645, -8.1550



14.1862, 1.0672, 0.5128



63.7533, -3.4017, 3.4638



15.6573, -0.8354, 0.8507

Same Dimension

The Same Dimension uses a secret algorithm to generate beautiful new colors.



16.4004, 7.6627, 0.1308



19.8163, 13.1886, 0.1535



16.6985, 5.4489, 3.8736



11.5997, 0.3345, 0.4888



16.3436, 28.8165, 4.1462



40.7284, 71.4101, 13.4379

Inverse Universe

The Inverse Universe completely reimagines the original color for something new.



16.4004, 7.6627, 0.1308



19.8163, 13.1886, 0.1535



20.4026, -5.8270, -1.6256



11.5997, 0.3345, 0.4888



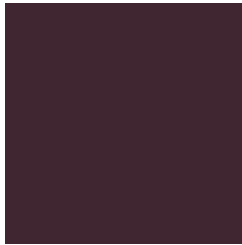
16.3436, 28.8165, 4.1462



40.7284, 71.4101, 13.4379

Previews

White Background



This preview shows how the HunterLab color 16.4000, 7.6634, 0.1305 looks on a white background.

Color Contrast Check

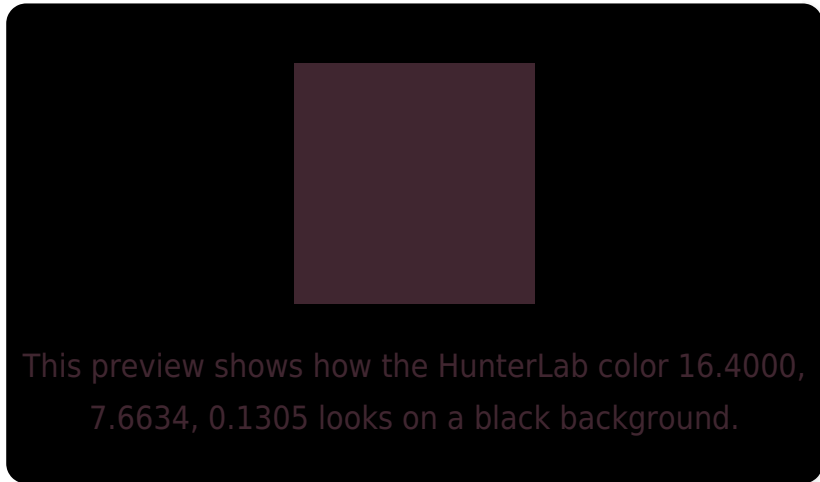
Large Text (above 18pt) WCAG AA ✓ Pass

Any Text WCAG AA ✓ Pass

Large Text (above 18pt) WCAG AAA ✓ Pass

Any Text WCAG AAA ✓ Pass

Black Background



Color Contrast Check

Large Text (above 18pt) WCAG AA × Fail

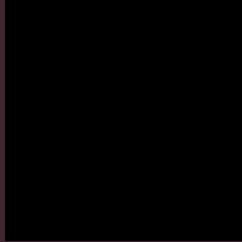
Any Text WCAG AA × Fail

Large Text (above 18pt) WCAG AAA × Fail

Any Text WCAG AAA × Fail

If you want to check with other color combinations, try the [Color Contrast Checker](#).

HunterLab 16.4000, 7.6634, 0.1305 Background



This preview shows how black text looks on a background with the HunterLab color 16.4000, 7.6634, 0.1305.



This preview shows how white text looks on a background with the HunterLab color 16.4000, 7.6634,

0.1305.

Color Blindness Simulation

Color vision deficiency is a very complex topic, and I could not describe the different causes any better than Wikipedia does, so if you want to learn more, you should check out their [article about color blindness](#).

Dichromacy



Original Color

16.4000, 7.6634, 0.1305

Protanopia

16.6401, -0.1377, -1.7499

Deuteranopia

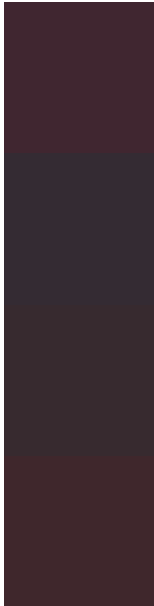
16.6136, 0.6540, 0.6511



Tritanopia

16.3553, 6.2299, 2.2464

Trichromacy



Original Color

16.4000, 7.6634, 0.1305

Protanomaly

16.4220, 2.5395, -1.1440

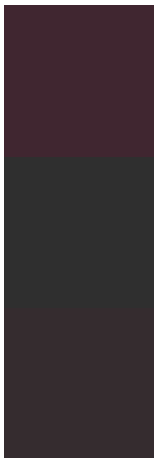
Deuteranomaly

16.3505, 3.2274, 0.3796

Tritanomaly

16.4001, 6.4557, 1.6041

Monochromacy



Original Color

16.4000, 7.6634, 0.1305

Achromatopsia

16.8600, -0.8996, 0.9160

Achromatomaly

16.6237, 1.8541, 0.6842

CSS Examples

Text

The CSS property to change the color of the text to HunterLab 16.4000, 7.6634, 0.1305 is called "color". The color property can be set on classes, ids or directly on the HTML element.

This example shows how text in the color `rgb(64, 38, 48)` looks like.

```
.text, #text, p{  
    color:rgb(64, 38, 48)  
}
```

If you want to add a text shadow in that color use the text-shadow property, you can generate a text shadow directly with our [CSS Text Shadow Generator](#).

Here you see how black text with a 4 pixel rgb(64, 38, 48) colored shadow looks like.

```
.shadow{ text-shadow: 4px 4px 2px rgb(64, 38, 48) }
```

Border

The CSS property to change the border of an element to HunterLab 16.4000, 7.6634, 0.1305 is called "border". The border property can be set on classes, ids or directly on the HTML element.

This example shows the color as border, it can be applied via the CSS property "border" or "border-color".

```
.border, #border, table{ border:4px solid rgb(64, 38, 48) }
```


If only the border color should be changed use the property `border-color`.

```
.border{ border-color:rgb(64, 38, 48) }
```

If you want to add a box shadow in that color use:

Here you see how a box with a 4 pixel `rgb(64, 38, 48)` colored shadow looks like.

```
.boxshadow{ -moz-box-shadow:4px 4px 4px  
4px rgb(64, 38, 48); -webkit-box-  
shadow:4px 4px 4px 4px rgb(64, 38, 48);  
box-shadow:4px 4px 4px 4px rgb(64, 38, 48)  
}
```

Background

The CSS property to change the background color of an element to HunterLab 16.4000, 7.6634, 0.1305 is called "background". The background property can be set on classes, ids or directly on the HTML element.

```
.background, #background, body{  
background: rgb(64, 38, 48) }
```

If only the background color should be changed can be used:

```
.background{ background-color: rgb(64, 38,  
48) }
```

This example shows the color as background, it is applied via the CSS property "background".

To optimize and compress your CSS code, you can use our [online CSS compressor and optimizer](#) based on csstidy. If you want to create a linear or radial gradient as background or border, check our [CSS Gradient Generator](#).

Hey! You found this booklet interesting? Support Converting Colors with the new Membership Option!

The pro membership hides all ads, plus gives you double the colors in the color bucket, and more awesome pro features!

[Learn more, Memberships starting at \\$2.50/m!](#)

**Follow me
on Twitter!**

@ConvertingColor