

Converting Colors

HunterLab(16.4958, 4.8652,
2.4274)

Have a look what the booklet for
HunterLab(16.4958, 4.8652, 2.4274)
contains.

HunterLab(16.5685, 4.7835, 2.4545)	3
<i>Conversions</i>	4
<i>Details</i>	6
<i>Harmonies</i>	12
<i>Previews</i>	24
<i>Color Blindness Simulation</i>	28
<i>CSS Examples</i>	31

Color

**HunterLab(16.5685, 4.7835,
2.4545)**

Conversions

Conversions Part 1

Format	Color
Hex	3D292A
RGB	61, 41, 42
RGB Percent	24%, 16%, 16%
CMY	0.7608, 0.8392, 0.8353
CMYK	0.00, 0.33, 0.31, 0.76
HSL	357°, 20%, 20%
HSV	357°, 33%, 24%
XYZ	3.1353, 2.7452, 2.5551
YIQ	47.0940, 11.5990, 4.5510

Conversions

Conversions Part 2

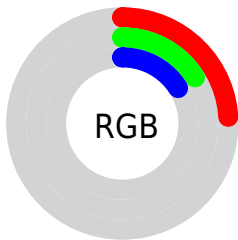
Format	Color
RYB	61, 41, 42
Decimal	4008234
CIELab	18.99, 9.52, 3.07
CIELCh	19, 10.007, 17.888
Yxy	2.7453, 0.3717, 0.3254
Android (android.graphics.Color)	4282198314 (0xFF3D292A)
YUV	47.0940, -2.5113, 12.1956
Hunter-Lab	16.5685, 4.7835, 2.4545

Details

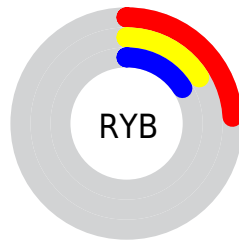
The HunterLab color **16.5685, 4.7835, 2.4545** is a dark color, and the websafe version is hex **333333**. A complement of this color would be **20.3352, -5.7513, -0.0350**, and the grayscale version is **16.8969, -0.9016, 0.9180**.

A 20% lighter version of the original color is **32.5498, 5.3062, 3.7257**, and **2.9252, 5.0094, 1.8902** is the 20% darker color. If you saturate the color by 10%, you get **15.2218, 6.7147, 2.9318**, and if you desaturate by 10%, it is **18.0139, 2.9032, 2.0198**.

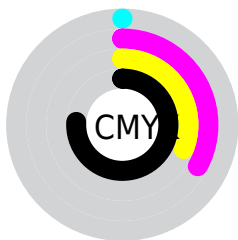
Distribution



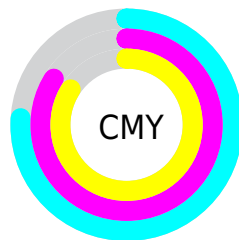
- Red (24%)
- Green (16%)
- Blue (16%)



- Red (24%)
- Yellow (16%)
- Blue (16%)



- Cyan (0%)
- Magenta (33%)
- Yellow (31%)
- Black (76%)



- Cyan (76%)
- Magenta (84%)
- Yellow (84%)

Brightness & Saturation Gradients

These gradients show how the HunterLab color 16.5685, 4.7835, 2.4545 changes by changing the brightness by 10 percent. The first figure shows a shift by +10% for each color and the second figure -10%.

Similar to the brightness gradients but the following saturation gradients show a change of the HunterLab color 16.5685, 4.7835, 2.4545 by changing the saturation by 10% instead.

■ 16.5685, 4.7835,
2.4545

■ 16.5685, 4.7835,
2.4545

■ 111.8521, 4.2679,
9.1342

■ 10.0012, 4.3752,
1.8481

■ 32.6422, 5.2032,
3.7604

0.0000, INF, NaN

0.0000, NaN, NaN

■ 41.9389, 5.2659,
4.4502

0.0000, NaN, NaN

■ 51.9814, 5.2502,
5.1662

0.0000, NaN, NaN

0.0000, NaN, NaN

■ 62.7179, 5.1659,
5.9086

0.0000, NaN, NaN

■ 74.1060, 5.0203,
6.6770

0.0000, NaN, NaN

■ 86.1106, 4.8191,

0.0000, NaN, NaN

7.4711

98.7013, 4.5671,
8.2903

16.5685, 4.7835,
2.4545

16.5685, 4.7835,
2.4545

15.2218, 6.7147,
2.9318

18.0139, 2.9032,
2.0198

13.9893, 8.6765,
3.4491

19.5430, 1.0843,
1.6251

12.8905, 10.6244,
3.9985

21.1446, -0.6736,
1.2673

11.9464, 12.4857,
4.5623

22.8096, -2.3744,
0.9422

11.1772, 14.1577,
5.1111

24.5303, -4.0238,
0.6457

■ 10.5048, 15.8027,
5.5781

■ 26.3004, -5.6282,
0.3742

■ 9.9939, 17.1817,
5.9400

■ 28.1149, -7.1937,
0.1241

■ 29.9695, -8.7260,
-0.1075

■ 31.8606, -10.2303,
-0.3230

Harmonies

Analogous

The Analogous color harmony consists of three colors that are next to each other on the color wheel.



16.5689, 4.9480, -0.2542



16.5685, 4.7835, 2.4545



16.5689, 3.0364, 4.3843

Triad

The Triadic color harmony groups three colors that are evenly spaced from another and form a triangle on the color wheel.



16.5689, 4.7828, 2.4548



16.5689, -4.8346, 4.0887



16.5689, -2.0427, -5.1915

Complementary

The Complementary color scheme is a pair of colors which are on the opposite of each other on the color wheel.



16.5685, 4.7835, 2.4545



20.3352, -5.7513, -0.0350

Split Complementary

Split-complementary colors differ from the complementary color scheme. The scheme consists of three colors, the original color and two neighbors of the complement color.



16.5689, -4.4724, -3.5521



16.5685, 4.7835, 2.4545



16.5689, -6.0082, 1.9803

Square

The Square scheme is like the rectangle color scheme, but the four colors are evenly spaced on the color wheel.



16.5689, 4.7828, 2.4548



16.5689, -2.5687, 5.2095



16.5689, -5.8804, -0.8176



16.5689, 0.8688, -5.0048

Rectangle

The Rectangle color scheme consists of four colors that form a rectangle on the color wheel.



16.5685, 4.7835, 2.4545



16.5689, 1.2742, 5.1139



16.5689, -5.8804, -0.8176



16.5689, -2.9389, -4.8255

Sweetspot

The Sweet Spot groups the original color and five complimentary colors.



16.5689, 4.7828, 2.4548



25.7900, 0.8651, 1.9925



16.9812, 7.0612, -4.8274



13.6072, 0.5239, 1.0694



62.6995, -3.3455, 3.4066



14.8260, -0.7911, 0.8055

Same Dimension

The Same Dimension uses a secret algorithm to generate beautiful new colors.



16.5689, 4.7828, 2.4548



20.0615, 8.1810, 3.6667



18.5297, 0.9557, 4.7217



10.8461, 0.1674, 0.7855



15.5195, 26.6442, 9.5126



39.4085, 67.5500, 24.9859

Inverse Universe

The Inverse Universe completely reimagines the original color for something new.



16.5689, 4.7828, 2.4548



20.0615, 8.1810, 3.6667



18.0678, -2.1297, -3.3916



10.8461, 0.1674, 0.7855



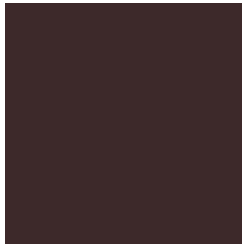
15.5195, 26.6442, 9.5126



39.4085, 67.5500, 24.9859

Previews

White Background



This preview shows how the HunterLab color 16.5685, 4.7835, 2.4545 looks on a white background.

Color Contrast Check

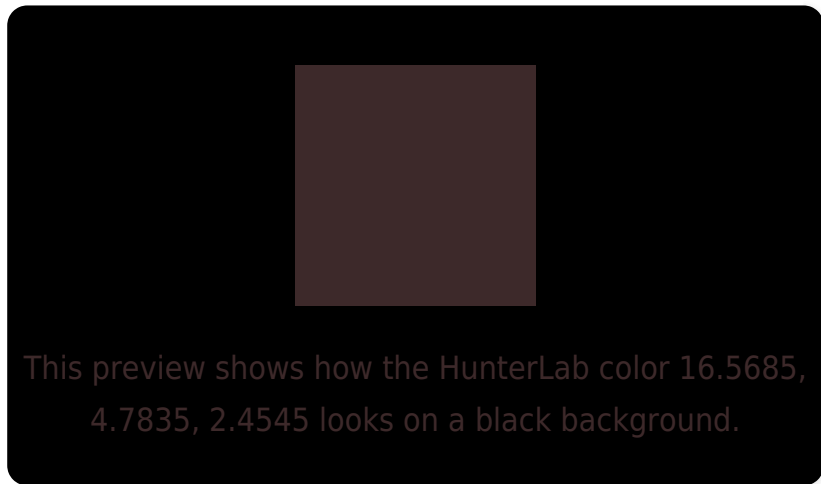
Large Text (above 18pt) WCAG AA ✓ Pass

Any Text WCAG AA ✓ Pass

Large Text (above 18pt) WCAG AAA ✓ Pass

Any Text WCAG AAA ✓ Pass

Black Background



Color Contrast Check

Large Text (above 18pt) WCAG AA × Fail

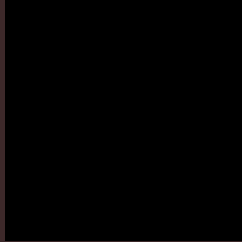
Any Text WCAG AA × Fail

Large Text (above 18pt) WCAG AAA × Fail

Any Text WCAG AAA × Fail

If you want to check with other color combinations, try the [Color Contrast Checker](#).

HunterLab 16.5685, 4.7835, 2.4545 Background



This preview shows how black text looks on a background with the HunterLab color 16.5685, 4.7835, 2.4545.

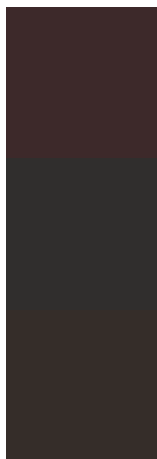


This preview shows how white text looks on a background with the HunterLab color 16.5685, 4.7835,

Color Blindness Simulation

Color vision deficiency is a very complex topic, and I could not describe the different causes any better than Wikipedia does, so if you want to learn more, you should check out their [article about color blindness](#).

Dichromacy



Original Color

16.5685, 4.7835, 2.4545

Protanopia

16.6488, -0.5136, 1.4088

Deuteranopia

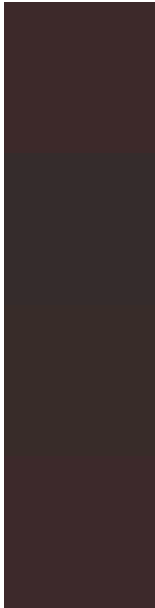
16.7145, 0.7246, 2.8707



Tritanopia

16.6127, 5.0105, 1.8200

Trichromacy



Original Color

16.5685, 4.7835, 2.4545

Protanomaly

16.5532, 1.4788, 1.6910

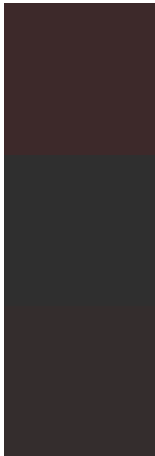
Deuteranomaly

16.7398, 1.9678, 2.9193

Tritanomaly

16.5903, 4.8957, 2.1408

Monochromacy



Original Color

16.5685, 4.7835, 2.4545

Achromatopsia

16.8600, -0.8996, 0.9160

Achromatomaly

16.7221, 0.9260, 1.5179

CSS Examples

Text

The CSS property to change the color of the text to HunterLab 16.5685, 4.7835, 2.4545 is called "color". The color property can be set on classes, ids or directly on the HTML element.

This example shows how text in the color `rgb(61, 41, 42)` looks like.

```
.text, #text, p{  
    color:rgb(61, 41, 42)  
}
```

If you want to add a text shadow in that color use the text-shadow property, you can generate a text shadow directly with our [CSS Text Shadow Generator](#).

Here you see how black text with a 4 pixel rgb(61, 41, 42) colored shadow looks like.

```
.shadow{ text-shadow: 4px 4px 2px rgb(61, 41, 42) }
```

Border

The CSS property to change the border of an element to HunterLab 16.5685, 4.7835, 2.4545 is called "border". The border property can be set on classes, ids or directly on the HTML element.

This example shows the color as border, it can be applied via the CSS property "border" or "border-color".

```
.border, #border, table{ border:4px solid rgb(61, 41, 42) }
```


If only the border color should be changed use the property `border-color`.

```
.border{ border-color:rgb(61, 41, 42) }
```

If you want to add a box shadow in that color use:

Here you see how a box with a 4 pixel `rgb(61, 41, 42)` colored shadow looks like.

```
.boxshadow{ -moz-box-shadow:4px 4px 4px  
4px rgb(61, 41, 42); -webkit-box-  
shadow:4px 4px 4px 4px rgb(61, 41, 42);  
box-shadow:4px 4px 4px 4px rgb(61, 41, 42)  
}
```

Background

The CSS property to change the background color of an element to HunterLab 16.5685, 4.7835, 2.4545 is called "background". The background property can be set on classes, ids or directly on the HTML element.

```
.background, #background, body{  
background: rgb(61, 41, 42) }
```

If only the background color should be changed can be used:

```
.background{ background-color: rgb(61, 41,  
42) }
```

This example shows the color as background, it is applied via the CSS property "background".

To optimize and compress your CSS code, you can use our [online CSS compressor and optimizer](#) based on csstidy. If you want to create a linear or radial gradient as background or border, check our [CSS Gradient Generator](#).

Hey! You found this booklet interesting? Support Converting Colors with the new Membership Option!

The pro membership hides all ads, plus gives you double the colors in the color bucket, and more awesome pro features!

[Learn more, Memberships starting at \\$2.50/m!](#)

**Follow me
on Twitter!**

@ConvertingColor