

# Converting Colors

HunterLab(16.5015, 4.8834,  
2.8283)

Have a look what the booklet for  
HunterLab(16.5015, 4.8834, 2.8283)  
contains.

<b>HunterLab(16.5471, 4.6738, 2.7614)</b> .....	3
<i><b>Conversions</b></i> .....	4
<i><b>Details</b></i> .....	6
<i><b>Harmonies</b></i> .....	12
<i><b>Previews</b></i> .....	24
<i><b>Color Blindness Simulation</b></i> .....	28
<i><b>CSS Examples</b></i> .....	31

# Color

**HunterLab(16.5471, 4.6738,  
2.7614)**

# Conversions

## Conversions Part 1

Format	Color
Hex	3D2929
RGB	61, 41, 41
RGB Percent	24%, 16%, 16%
CMY	0.7608, 0.8392, 0.8392
CMYK	0.00, 0.33, 0.33, 0.76
HSL	0°, 20%, 20%
HSV	0°, 33%, 24%
XYZ	3.1176, 2.7381, 2.4620
YIQ	46.9800, 11.9200, 4.2400

# Conversions

## Conversions Part 2

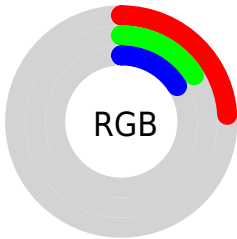
<b>Format</b>	<b>Color</b>
<b>R<sub>YB</sub></b>	61, 41, 41
Decimal	4008233
CIE Lab	18.96, 9.35, 3.73
CIE LCh	19, 10.066, 21.725
Yxy	2.7382, 0.3748, 0.3292
Android (android.graphics.Color)	4282198313 (0xFF3D2929)
YUV	46.9800, -2.9481, 12.2955
Hunter-Lab	16.5471, 4.6738, 2.7614

# Details

The HunterLab color **16.5471, 4.6738, 2.7614** is a dark color, and the websafe version is hex **333333**. A complement of this color would be **20.3610, -5.6016, -0.4077**, and the grayscale version is **16.8604, -0.8996, 0.9161**.

A 20% lighter version of the original color is **32.5249, 5.1749, 4.0832**, and **2.9252, 5.0094, 1.8902** is the 20% darker color. If you saturate the color by 10%, you get **15.1960, 6.5855, 3.3051**, and if you desaturate by 10%, it is **17.9980, 2.8205, 2.2454**.

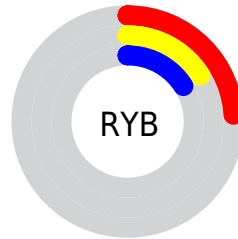
# Distribution



Red (24%)

Green (16%)

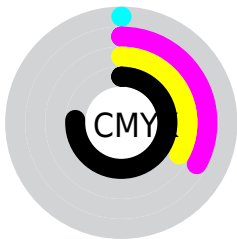
Blue (16%)



Red (24%)

Yellow (16%)

Blue (16%)

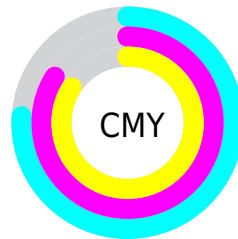


Cyan (0%)

Magenta (33%)

Yellow (33%)

Black (76%)



Cyan (76%)

Magenta (84%)

Yellow (84%)

# Brightness & Saturation Gradients

These gradients show how the HunterLab color 16.5471, 4.6738, 2.7614 changes by changing the brightness by 10 percent. The first figure shows a shift by +10% for each color and the second figure -10%.

Similar to the brightness gradients but the following saturation gradients show a change of the HunterLab color 16.5471, 4.6738, 2.7614 by changing the saturation by 10% instead.



■ 16.5471, 4.6738,  
2.7614

■ 16.5471, 4.6738,  
2.7614

■ 111.8116, 4.0804,  
9.7667

■ 9.9831, 4.2775,  
2.1185

■ 32.6154, 5.0723,  
4.1626

0.0000, INF, NaN

0.0000, NaN, NaN

■ 41.9098, 5.1256,  
4.8926

0.0000, NaN, NaN

■ 51.9501, 5.1011,  
5.6455

0.0000, NaN, NaN

■ 62.6845, 5.0083,  
6.4221

0.0000, NaN, NaN

0.0000, NaN, NaN

■ 74.0708, 4.8547,  
7.2227

0.0000, NaN, NaN

■ 86.0735, 4.6460,

0.0000, NaN, NaN

8.0472

98.6625, 4.3866,  
8.8953

16.5471, 4.6738,  
2.7614

16.5471, 4.6738,  
2.7614

15.1960, 6.5855,  
3.3051

17.9980, 2.8205,  
2.2454

13.9603, 8.5365,  
3.8698

19.5334, 1.0348,  
1.7576

12.8601, 10.4832,  
4.4429

21.1421, -0.6847,  
1.2974

11.9166, 12.3534,  
5.0015

22.8147, -2.3428,  
0.8622

11.1501, 14.0434,  
5.5125

24.5434, -3.9461,  
0.4495

■ 10.4755, 15.6860,  
6.0144

■ 26.3219, -5.5015,  
0.0565

■ 9.9609, 17.0559,  
6.4365

■ 28.1451, -7.0155,  
-0.3195

■ 30.0087, -8.4944,  
-0.6808

■ 31.9091, -9.9433,  
-1.0294

# Harmonies

## Analogous

The Analogous color harmony consists of three colors that are next to each other on the color wheel.



16.5475, 5.0592, 0.1119



16.5471, 4.6738, 2.7614



16.5475, 2.7470, 4.5752

# Triad

The Triadic color harmony groups three colors that are evenly spaced from another and form a triangle on the color wheel.



16.5475, 4.6731, 2.7617



16.5475, -5.0726, 3.8845



16.5475, -1.6857, -5.3183

# Complementary

The Complementary color scheme is a pair of colors which are on the opposite of each other on the color wheel.



16.5471, 4.6738, 2.7614



20.3610, -5.6016, -0.4077

# Split Complementary

Split-complementary colors differ from the complementary color scheme. The scheme consists of three colors, the original color and two neighbors of the complement color.



16.5475, -4.2263, -3.8752



16.5471, 4.6738, 2.7614



16.5475, -6.0909, 1.6525

# Square

The Square scheme is like the rectangle color scheme, but the four colors are evenly spaced on the color wheel.



16.5475, 4.6731, 2.7617



16.5475, -2.9151, 5.1407



16.5475, -5.7922, -1.2051



16.5475, 1.2504, -4.8816



# Rectangle

The Rectangle color scheme consists of four colors that form a rectangle on the color wheel.



16.5471, 4.6738, 2.7614



16.5475, 0.9174, 5.2191



16.5475, -5.7922, -1.2051



16.5475, -2.6111, -5.0291

# Sweetspot

The Sweet Spot groups the original color and five complimentary colors.



16.5475, 4.6731, 2.7617



25.7803, 0.8115, 2.1339



17.0731, 7.3391, -4.6828



13.6017, 0.4941, 1.1480



62.6995, -3.3455, 3.4066



14.8260, -0.7911, 0.8055



# Same Dimension

The Same Dimension uses a secret algorithm to generate beautiful new colors.



16.5475, 4.6731, 2.7617



20.0295, 8.0173, 4.1342



18.7613, 0.5490, 4.9406



10.8428, 0.1493, 0.8331



15.4867, 26.5190, 10.0071



39.3780, 67.4338, 25.4451



# Inverse Universe

The Inverse Universe completely reimagines the original color for something new.



20.3610, -5.6016, -0.4077



26.0727, -8.3708, -0.9237



17.8214, -1.7341, -3.7369



11.3863, -1.3006, 0.3863



29.8011, -15.7977, -3.1459

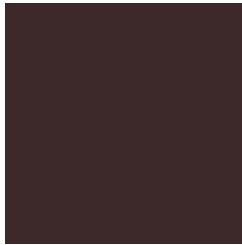


75.7762, -40.1692, -7.9999



# Previews

## White Background



This preview shows how the HunterLab color 16.5471, 4.6738, 2.7614 looks on a white background.

## Color Contrast Check

Large Text (above 18pt) WCAG AA ✓ Pass

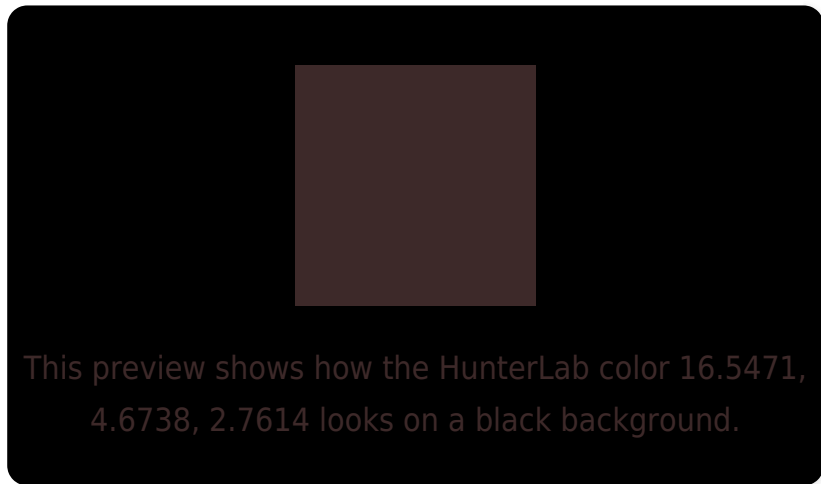
Any Text WCAG AA ✓ Pass

Large Text (above 18pt) WCAG AAA ✓ Pass

Any Text WCAG AAA ✓ Pass



# Black Background



## Color Contrast Check

Large Text (above 18pt) WCAG AA × Fail

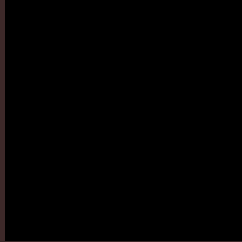
Any Text WCAG AA × Fail

Large Text (above 18pt) WCAG AAA × Fail

Any Text WCAG AAA × Fail

If you want to check with other color combinations, try the [Color Contrast Checker](#).

# HunterLab 16.5471, 4.6738, 2.7614 Background



This preview shows how black text looks on a background with the HunterLab color 16.5471, 4.6738, 2.7614.



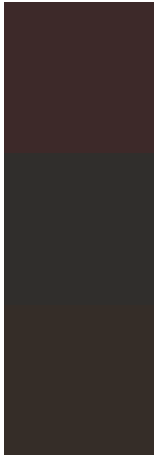
This preview shows how white text looks on a background with the HunterLab color 16.5471, 4.6738,

2.7614.

# Color Blindness Simulation

Color vision deficiency is a very complex topic, and I could not describe the different causes any better than Wikipedia does, so if you want to learn more, you should check out their [article about color blindness](#).

## Dichromacy



### Original Color

16.5471, 4.6738, 2.7614

### Protanopia

16.6259, -0.6385, 1.7361

### Deuteranopia

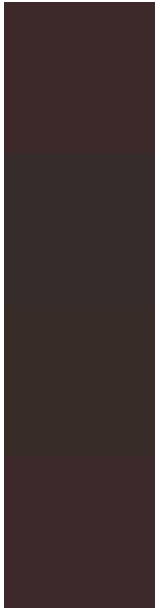
16.6939, 0.6135, 3.1677



## Tritanopia

16.6127, 5.0105, 1.8200

# Trichromacy



## Original Color

16.5471, 4.6738, 2.7614

## Protanomaly

16.5308, 1.3588, 2.0127

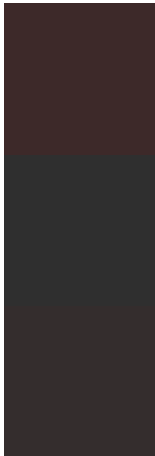
## Deuteranomaly

16.7192, 1.8584, 3.2159

## Tritanomaly

16.5903, 4.8957, 2.1408

# Monochromacy



## Original Color

16.5471, 4.6738, 2.7614

## Achromatopsia

16.8600, -0.8996, 0.9160

## Achromatomaly

16.7221, 0.9260, 1.5179

# CSS Examples

## Text

The CSS property to change the color of the text to HunterLab 16.5471, 4.6738, 2.7614 is called "color". The color property can be set on classes, ids or directly on the HTML element.

This example shows how text in the color `rgb(61, 41, 41)` looks like.

```
.text, #text, p{  
    color:rgb(61, 41, 41)  
}
```

If you want to add a text shadow in that color use the text-shadow property, you can generate a text shadow directly with our [CSS Text Shadow Generator](#).

Here you see how black text with a 4 pixel rgb(61, 41, 41) colored shadow looks like.

```
.shadow{ text-shadow: 4px 4px 2px rgb(61, 41, 41) }
```

## Border

The CSS property to change the border of an element to HunterLab 16.5471, 4.6738, 2.7614 is called "border". The border property can be set on classes, ids or directly on the HTML element.

This example shows the color as border, it can be applied via the CSS property "border" or "border-color".

```
.border, #border, table{ border:4px solid rgb(61, 41, 41) }
```



If only the border color should be changed use the property `border-color`.

```
.border{ border-color:rgb(61, 41, 41) }
```

If you want to add a box shadow in that color use:

Here you see how a box with a 4 pixel `rgb(61, 41, 41)` colored shadow looks like.

```
.boxshadow{ -moz-box-shadow:4px 4px 4px  
4px rgb(61, 41, 41); -webkit-box-  
shadow:4px 4px 4px 4px rgb(61, 41, 41);  
box-shadow:4px 4px 4px 4px rgb(61, 41, 41)  
}
```

# Background

The CSS property to change the background color of an element to HunterLab 16.5471, 4.6738, 2.7614 is called "background". The background property can be set on classes, ids or directly on the HTML element.

```
.background, #background, body{  
background: rgb(61, 41, 41) }
```

If only the background color should be changed can be used:

```
.background{ background-color: rgb(61, 41,  
41) }
```

This example shows the color as background, it is applied via the CSS property "background".

To optimize and compress your CSS code, you can use our [online CSS compressor and optimizer](#) based on csstidy. If you want to create a linear or radial gradient as background or border, check our [CSS Gradient Generator](#).

# Hey! You found this booklet interesting? Support Converting Colors with the new Membership Option!

The pro membership hides all ads, plus gives you double the colors in the color bucket, and more awesome pro features!

**[Learn more, Memberships starting at \\$2.50/m!](#)**

**Follow me  
on Twitter!**

@ConvertingColor