

Converting Colors

HunterLab(16.5146, 1.8590,
5.7819)

Have a look what the booklet for
HunterLab(16.5146, 1.8590, 5.7819)
contains.

HunterLab(16.4956, 1.8987, 5.7829)	3
<i>Conversions</i>	4
<i>Details</i>	6
<i>Harmonies</i>	12
<i>Previews</i>	24
<i>Color Blindness Simulation</i>	28
<i>CSS Examples</i>	31

Color

**HunterLab(16.4956, 1.8987,
5.7829)**

Conversions

Conversions Part 1

Format	Color
Hex	3A2B1E
RGB	58, 43, 30
RGB Percent	23%, 17%, 12%
CMY	0.7725, 0.8314, 0.8824
CMYK	0.00, 0.26, 0.48, 0.77
HSL	28°, 32%, 17%
HSV	28°, 48%, 23%
XYZ	2.8432, 2.7210, 1.6037
YIQ	46.0030, 13.1130, -0.8630

Conversions

Conversions Part 2

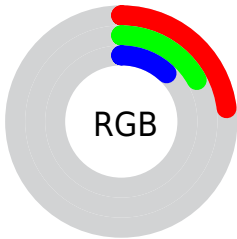
Format	Color
R_{YB}	58, 54, 30
Decimal	3812126
CIE _{Lab}	18.89, 4.82, 11.13
CIE _{LCh}	19, 12.131, 66.579
Yxy	2.7212, 0.3966, 0.3796
Android (android.graphics.Color)	4282002206 (0xFF3A2B1E)
YUV	46.0030, -7.8895, 10.5214
Hunter-Lab	16.4956, 1.8987, 5.7829

Details

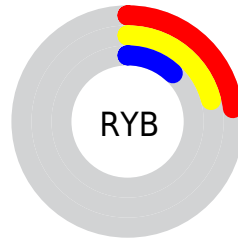
The HunterLab color **16.4956, 1.8987, 5.7829** is a dark color, and the websafe version is hex **333333**. A complement of this color would be **15.6786, -1.9638, -5.5110**, and the grayscale version is **16.5526, -0.8832, 0.8993**.

A 20% lighter version of the original color is **32.4623, 1.8597, 8.2031**, and 0.0000, NaN, NaN is the 20% darker color. If you saturate the color by 10%, you get **15.7380, 2.7092, 6.4482**, and if you desaturate by 10%, it is **17.2864, 1.1562, 5.0020**.

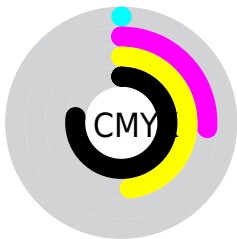
Distribution



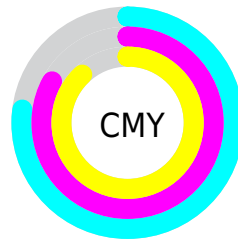
- Red (23%)
- Green (17%)
- Blue (12%)



- Red (23%)
- Yellow (21%)
- Blue (12%)



- Cyan (0%)
- Magenta (26%)
- Yellow (48%)
- Black (77%)



- Cyan (77%)
- Magenta (83%)
- Yellow (88%)

Brightness & Saturation Gradients

These gradients show how the HunterLab color 16.4956, 1.8987, 5.7829 changes by changing the brightness by 10 percent. The first figure shows a shift by +10% for each color and the second figure -10%.

Similar to the brightness gradients but the following saturation gradients show a change of the HunterLab color 16.4956, 1.8987, 5.7829 by changing the saturation by 10% instead.

■ 16.4956, 1.8987,
5.7829

■ 16.4956, 1.8987,
5.7829

■ 111.7142, -0.8281,
16.6972

■ 9.9396, 1.8464,
5.2072

■ 32.5508, 1.7071,
8.3487

0.0000, INF, NaN

0.0000, NaN, NaN

■ 41.8396, 1.5000,
9.5639

0.0000, NaN, NaN

■ 51.8747, 1.2323,
10.7594

0.0000, NaN, NaN

■ 62.6042, 0.9106,
11.9453

0.0000, NaN, NaN

0.0000, NaN, NaN

■ 73.9859, 0.5401,
13.1280

0.0000, NaN, NaN

■ 85.9842, 0.1248,

0.0000, NaN, NaN

14.3123

■ 98.5691, -0.3322,
15.5012

■ 16.4956, 1.8987,
5.7829

■ 16.4956, 1.8987,
5.7829

■ 15.7380, 2.7092,
6.4482

■ 17.2864, 1.1562,
5.0020

■ 15.0151, 3.5912,
6.9870

■ 18.1068, 0.4811,
4.1152

■ 14.3301, 4.5434,
7.3896

■ 18.9549, -0.1306,
3.1325

■ 13.6834, 5.5507,
7.6827

■ 19.8287, -0.6828,
2.0627

■ 13.0661, 6.5493,
8.0356

■ 20.7262, -1.1794,
0.9142

■ 12.9626, 6.7194,
8.1051

■ 21.6458, -1.6244,
-0.3058

■ 22.5860, -2.0217,
-1.5909

■ 23.5454, -2.3750,
-2.9351

■ 24.5227, -2.6876,
-4.3334

Harmonies

Analogous

The Analogous color harmony consists of three colors that are next to each other on the color wheel.



16.4960, 4.9172, 4.2943



16.4956, 1.8987, 5.7829



16.4960, -1.6499, 6.1014

Triad

The Triadic color harmony groups three colors that are evenly spaced from another and form a triangle on the color wheel.



16.4960, 1.8980, 5.7831



16.4960, -7.0841, 0.1426



16.4960, 3.3520, -5.1585

Complementary

The Complementary color scheme is a pair of colors which are on the opposite of each other on the color wheel.



16.4956, 1.8987, 5.7829



15.6786, -1.9638, -5.5110

Split Complementary

Split-complementary colors differ from the complementary color scheme. The scheme consists of three colors, the original color and two neighbors of the complement color.



16.4960, -0.0979, -6.8697



16.4956, 1.8987, 5.7829



16.4960, -5.9748, -3.4212

Square

The Square scheme is like the rectangle color scheme, but the four colors are evenly spaced on the color wheel.



16.4960, 1.8980, 5.7831



16.4960, -6.6469, 3.2589



16.4960, -3.4876, -6.1750



16.4960, 5.8047, -1.8735

Rectangle

The Rectangle color scheme consists of four colors that form a rectangle on the color wheel.



16.4956, 1.8987, 5.7829



16.4960, -3.8032, 5.6829



16.4960, -3.4876, -6.1750



16.4960, 2.2598, -5.9651

Sweetspot

The Sweet Spot groups the original color and five complimentary colors.



16.4960, 1.8980, 5.7831



25.3463, -0.4409, 3.6295



14.2150, 8.9100, -1.6090



13.0696, -0.1992, 1.9322



61.6487, -3.2894, 3.3495



14.0024, -0.7471, 0.7608

Same Dimension

The Same Dimension uses a secret algorithm to generate beautiful new colors.



16.4960, 1.8980, 5.7831



20.4548, 3.8561, 8.6838



19.6981, -3.4558, 8.3802



10.4024, -0.3581, 1.0824



19.9142, 12.1549, 12.4838



49.5743, 35.8059, 31.1743

Inverse Universe

The Inverse Universe completely reimagines the original color for something new.



15.6786, -1.9638, -5.5110



19.1215, -2.3690, -9.7435



12.5799, 3.5212, -11.0531



10.3258, -0.7256, 0.0238



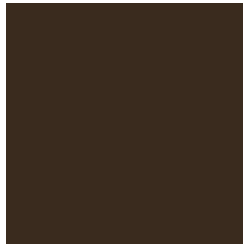
17.2637, 1.1031, -23.9594



42.3823, 6.8713, -67.8074

Previews

White Background



This preview shows how the HunterLab color 16.4956, 1.8987, 5.7829 looks on a white background.

Color Contrast Check

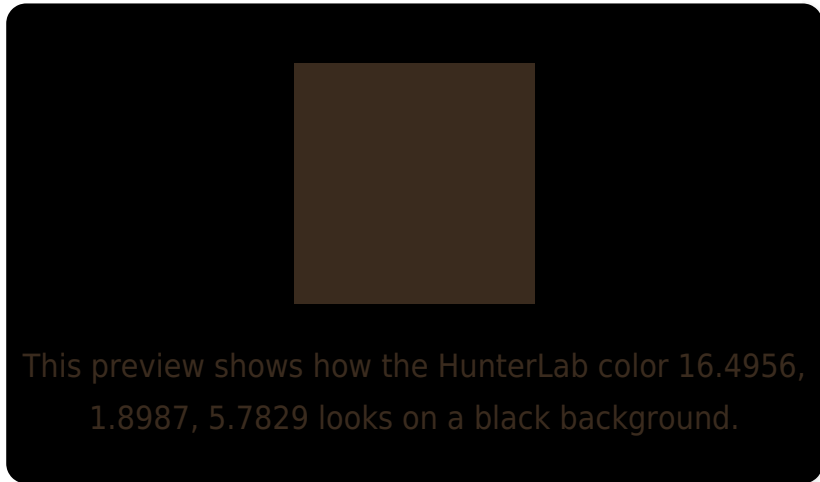
Large Text (above 18pt) WCAG AA ✓ Pass

Any Text WCAG AA ✓ Pass

Large Text (above 18pt) WCAG AAA ✓ Pass

Any Text WCAG AAA ✓ Pass

Black Background



Color Contrast Check

Large Text (above 18pt) WCAG AA × Fail

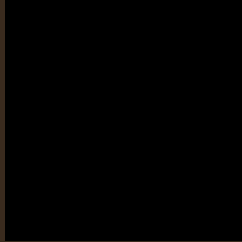
Any Text WCAG AA × Fail

Large Text (above 18pt) WCAG AAA × Fail

Any Text WCAG AAA × Fail

If you want to check with other color combinations, try the [Color Contrast Checker](#).

HunterLab 16.4956, 1.8987, 5.7829 Background



This preview shows how black text looks on a background with the HunterLab color 16.4956, 1.8987, 5.7829.

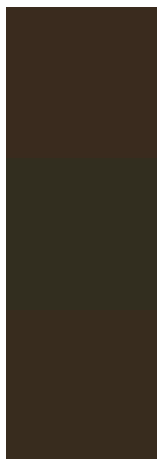


This preview shows how white text looks on a background with the HunterLab color 16.4956, 1.8987,

Color Blindness Simulation

Color vision deficiency is a very complex topic, and I could not describe the different causes any better than Wikipedia does, so if you want to learn more, you should check out their [article about color blindness](#).

Dichromacy



Original Color

16.4956, 1.8987, 5.7829

Protanopia

16.5258, -1.4881, 5.5062

Deuteranopia

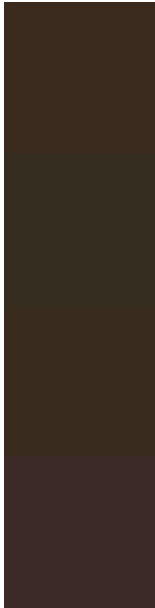
16.5404, 0.9033, 5.8051



Tritanopia

16.4242, 4.4185, 1.5959

Trichromacy



Original Color

16.4956, 1.8987, 5.7829

Protanomaly

16.5305, -0.2710, 5.5318

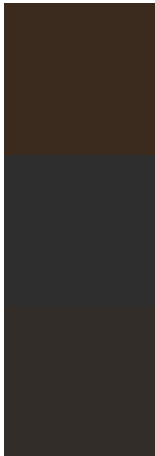
Deuteranomaly

16.6282, 1.1983, 5.8875

Tritanomaly

16.5294, 3.4466, 3.3607

Monochromacy



Original Color

16.4956, 1.8987, 5.7829

Achromatopsia

16.5290, -0.8819, 0.8981

Achromatomaly

16.4563, -0.1974, 2.9041

CSS Examples

Text

The CSS property to change the color of the text to HunterLab 16.4956, 1.8987, 5.7829 is called "color". The color property can be set on classes, ids or directly on the HTML element.

This example shows how text in the color `rgb(58, 43, 30)` looks like.

```
.text, #text, p{  
    color:rgb(58, 43, 30)  
}
```

If you want to add a text shadow in that color use the text-shadow property, you can generate a text shadow directly with our [CSS Text Shadow Generator](#).

Here you see how black text with a 4 pixel rgb(58, 43, 30) colored shadow looks like.

```
.shadow{ text-shadow: 4px 4px 2px rgb(58, 43, 30) }
```

Border

The CSS property to change the border of an element to HunterLab 16.4956, 1.8987, 5.7829 is called "border". The border property can be set on classes, ids or directly on the HTML element.

This example shows the color as border, it can be applied via the CSS property "border" or "border-color".

```
.border, #border, table{ border:4px solid rgb(58, 43, 30) }
```


If only the border color should be changed use the property `border-color`.

```
.border{ border-color:rgb(58, 43, 30) }
```

If you want to add a box shadow in that color use:

Here you see how a box with a 4 pixel `rgb(58, 43, 30)` colored shadow looks like.

```
.boxshadow{ -moz-box-shadow:4px 4px 4px  
4px rgb(58, 43, 30); -webkit-box-  
shadow:4px 4px 4px 4px rgb(58, 43, 30);  
box-shadow:4px 4px 4px 4px rgb(58, 43, 30)  
}
```

Background

The CSS property to change the background color of an element to HunterLab 16.4956, 1.8987, 5.7829 is called "background". The background property can be set on classes, ids or directly on the HTML element.

```
.background, #background, body{  
background: rgb(58, 43, 30) }
```

If only the background color should be changed can be used:

```
.background{ background-color: rgb(58, 43,  
30) }
```

This example shows the color as background, it is applied via the CSS property "background".

To optimize and compress your CSS code, you can use our [online CSS compressor and optimizer](#) based on csstidy. If you want to create a linear or radial gradient as background or border, check our [CSS Gradient Generator](#).

Hey! You found this booklet
interesting? Support Converting
Colors with the new Membership
Option!

The pro membership hides all ads, plus gives you
double the colors in the color bucket, and more
awesome pro features!

[Learn more, Memberships starting at \\$2.50/m!](#)

**Follow me
on Twitter!**

@ConvertingColor