

Converting Colors

HunterLab(16.5604, 8.6811,
2.4832)

Have a look what the booklet for
HunterLab(16.5604, 8.6811, 2.4832)
contains.

HunterLab(16.4901, 8.6322, 2.4364)	3
<i>Conversions</i>	4
<i>Details</i>	6
<i>Harmonies</i>	12
<i>Previews</i>	24
<i>Color Blindness Simulation</i>	28
<i>CSS Examples</i>	31

Color

**HunterLab(16.4901, 8.6322,
2.4364)**

Conversions

Conversions Part 1

Format	Color
Hex	44252A
RGB	68, 37, 42
RGB Percent	27%, 15%, 16%
CMY	0.7333, 0.8549, 0.8353
CMYK	0.00, 0.46, 0.38, 0.73
HSL	350°, 30%, 21%
HSV	350°, 46%, 27%
XYZ	3.4634, 2.7192, 2.5328
YIQ	46.8390, 16.8710, 8.1270

Conversions

Conversions Part 2

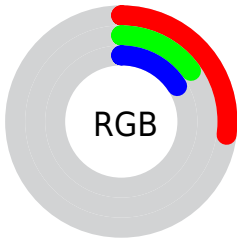
Format	Color
RYB	68, 37, 42
Decimal	4465962
CIELab	18.88, 15.41, 3.05
CIELCh	19, 15.706, 11.199
Yxy	2.7194, 0.3974, 0.3120
Android (android.graphics.Color)	4282656042 (0xFF44252A)
YUV	46.8390, -2.3856, 18.5582
Hunter-Lab	16.4901, 8.6322, 2.4364

Details

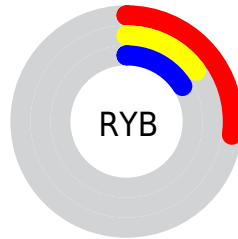
The HunterLab color **16.4901, 8.6322, 2.4364** is a dark color, and the websafe version is hex **663333**. A complement of this color would be **22.1054, -8.5860, 0.8571**, and the grayscale version is **16.8107, -0.8970, 0.9134**.

A 20% lighter version of the original color is **32.4108, 9.7761, 3.6478**, and **4.2680, 7.3091, 2.7579** is the 20% darker color. If you saturate the color by 10%, you get **15.1557, 10.8872, 2.9066**, and if you desaturate by 10%, it is **17.9626, 6.3732, 2.0556**.

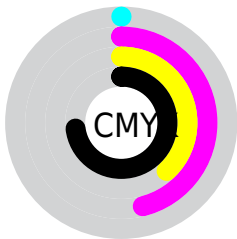
Distribution



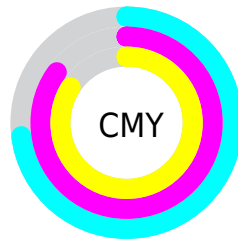
- Red (27%)
- Green (15%)
- Blue (16%)



- Red (27%)
- Yellow (15%)
- Blue (16%)



- Cyan (0%)
- Magenta (46%)
- Yellow (38%)
- Black (73%)



- Cyan (73%)
- Magenta (85%)
- Yellow (84%)

Brightness & Saturation Gradients

These gradients show how the HunterLab color 16.4901, 8.6322, 2.4364 changes by changing the brightness by 10 percent. The first figure shows a shift by +10% for each color and the second figure -10%.

Similar to the brightness gradients but the following saturation gradients show a change of the HunterLab color 16.4901, 8.6322, 2.4364 by changing the saturation by 10% instead.

■ 16.4901, 8.6322,
2.4364

■ 16.4901, 8.6322,
2.4364

■ 111.7038, 10.7774,
9.1021

■ 9.9350, 7.8269,
1.8372

■ 32.5439, 9.7678,
3.7385

0.0000, INF, NaN

0.0000, NaN, NaN

■ 41.8321, 10.1536,
4.4266

0.0000, NaN, NaN

■ 51.8666, 10.4422,
5.1410

0.0000, NaN, NaN

0.0000, NaN, NaN

■ 62.5957, 10.6461,
5.8818

0.0000, NaN, NaN

■ 73.9768, 10.7747,
6.6488

0.0000, NaN, NaN

■ 85.9747, 10.8356,

0.0000, NaN, NaN

7.4415

98.5591, 10.8348,
8.2595

16.4901, 8.6322,
2.4364

16.4901, 8.6322,
2.4364

15.1557, 10.8872,
2.9066

17.9626, 6.3732,
2.0556

13.9808, 13.0744,
3.4648

19.5519, 4.1504,
1.7571

12.9897, 15.0921,
4.0989

21.2415, 1.9809,
1.5323

12.2040, 16.8093,
4.7806

23.0175, -0.1296,
1.3716

11.5084, 18.5166,
5.3688

24.8685, -2.1820,
1.2659

■ 11.1939, 19.3849,
5.5657

■ 26.7853, -4.1809,
1.2073

■ 28.7602, -6.1322,
1.1889

■ 30.7871, -8.0421,
1.2050

■ 32.8608, -9.9167,
1.2508

Harmonies

Analogous

The Analogous color harmony consists of three colors that are next to each other on the color wheel.



16.4905, 8.2669, -2.0229



16.4901, 8.6322, 2.4364



16.4905, 6.2483, 5.5005

Triad

The Triadic color harmony groups three colors that are evenly spaced from another and form a triangle on the color wheel.



16.4905, 8.6314, 2.4367



16.4905, -6.2676, 6.0208



16.4905, -3.6124, -9.1105

Complementary

The Complementary color scheme is a pair of colors which are on the opposite of each other on the color wheel.



16.4901, 8.6322, 2.4364



22.1054, -8.5860, 0.8571

Split Complementary

Split-complementary colors differ from the complementary color scheme. The scheme consists of three colors, the original color and two neighbors of the complement color.



16.4905, -6.9729, -5.5952



16.4901, 8.6322, 2.4364



16.4905, -8.3869, 3.3657

Square

The Square scheme is like the rectangle color scheme, but the four colors are evenly spaced on the color wheel.



16.4905, 8.6314, 2.4367



16.4905, -2.5493, 7.1623



16.4905, -8.6303, -0.8058



16.4905, 0.8568, -9.5589

Rectangle

The Rectangle color scheme consists of four colors that form a rectangle on the color wheel.



16.4901, 8.6322, 2.4364



16.4905, 3.5593, 6.6613



16.4905, -8.6303, -0.8058



16.4905, -4.8957, -8.2113

Sweetspot

The Sweet Spot groups the original color and five complimentary colors.



16.4905, 8.6314, 2.4367



28.2328, 2.3323, 1.9956



16.7090, 10.7592, -8.9212



14.5596, 1.3769, 1.0529



64.8100, -3.4581, 3.5212



16.4960, -0.8802, 0.8963

Same Dimension

The Same Dimension uses a secret algorithm to generate beautiful new colors.



16.4905, 8.6314, 2.4367



19.6948, 14.8680, 3.9527



18.4998, 3.7870, 5.8558



11.5830, 0.2443, 0.7270



16.0381, 27.6920, 8.6090



40.0497, 68.9072, 23.3921

Inverse Universe

The Inverse Universe completely reimagines the original color for something new.



16.4905, 8.6314, 2.4367



19.6948, 14.8680, 3.9527



19.5022, -3.8996, -4.6772



11.5830, 0.2443, 0.7270



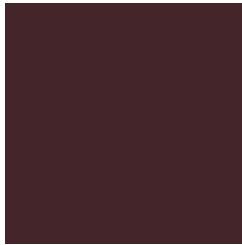
16.0381, 27.6920, 8.6090



40.0497, 68.9072, 23.3921

Previews

White Background



This preview shows how the HunterLab color 16.4901, 8.6322, 2.4364 looks on a white background.

Color Contrast Check

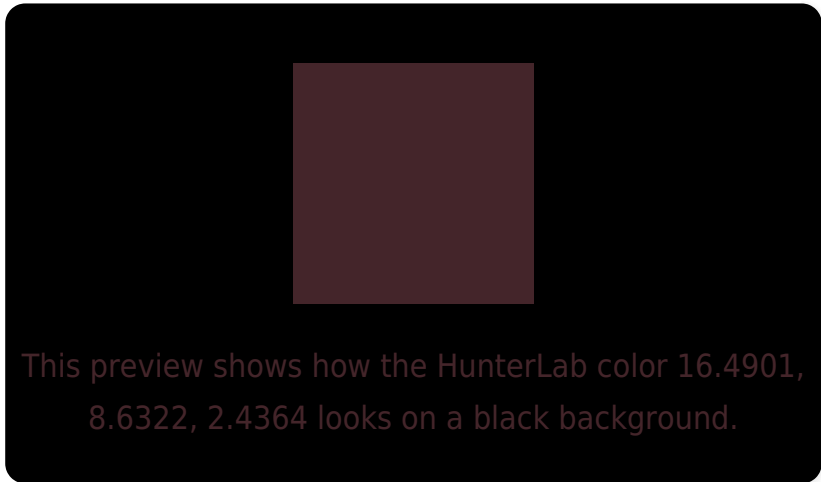
Large Text (above 18pt) WCAG AA ✓ Pass

Any Text WCAG AA ✓ Pass

Large Text (above 18pt) WCAG AAA ✓ Pass

Any Text WCAG AAA ✓ Pass

Black Background



Color Contrast Check

Large Text (above 18pt) WCAG AA × Fail

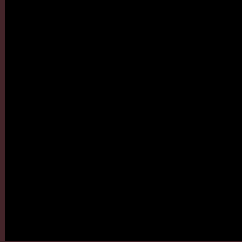
Any Text WCAG AA × Fail

Large Text (above 18pt) WCAG AAA × Fail

Any Text WCAG AAA × Fail

If you want to check with other color combinations, try the [Color Contrast Checker](#).

HunterLab 16.4901, 8.6322, 2.4364 Background



This preview shows how black text looks on a background with the HunterLab color 16.4901, 8.6322, 2.4364.

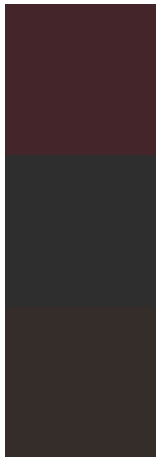


This preview shows how white text looks on a background with the HunterLab color 16.4901, 8.6322,

Color Blindness Simulation

Color vision deficiency is a very complex topic, and I could not describe the different causes any better than Wikipedia does, so if you want to learn more, you should check out their [article about color blindness](#).

Dichromacy



Original Color

16.4901, 8.6322, 2.4364

Protanopia

16.6240, -0.5047, 0.6432

Deuteranopia

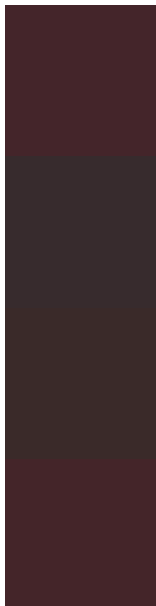
16.7145, 0.7246, 2.8707



Tritanopia

16.4477, 8.4241, 3.0460

Trichromacy



Original Color

16.4901, 8.6322, 2.4364

Protanomaly

16.5210, 2.5623, 1.3155

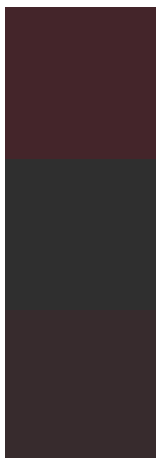
Deuteranomaly

16.4790, 3.3667, 2.6654

Tritanomaly

16.4687, 8.5269, 2.7447

Monochromacy



Original Color

16.4901, 8.6322, 2.4364

Achromatopsia

16.8600, -0.8996, 0.9160

Achromatomaly

16.5210, 2.5623, 1.3155

CSS Examples

Text

The CSS property to change the color of the text to HunterLab 16.4901, 8.6322, 2.4364 is called "color". The color property can be set on classes, ids or directly on the HTML element.

This example shows how text in the color `rgb(68, 37, 42)` looks like.

```
.text, #text, p{  
    color:rgb(68, 37, 42)  
}
```

If you want to add a text shadow in that color use the text-shadow property, you can generate a text shadow directly with our [CSS Text Shadow Generator](#).

Here you see how black text with a 4 pixel rgb(68, 37, 42) colored shadow looks like.

```
.shadow{ text-shadow: 4px 4px 2px rgb(68, 37, 42) }
```

Border

The CSS property to change the border of an element to HunterLab 16.4901, 8.6322, 2.4364 is called "border". The border property can be set on classes, ids or directly on the HTML element.

This example shows the color as border, it can be applied via the CSS property "border" or "border-color".

```
.border, #border, table{ border:4px solid rgb(68, 37, 42) }
```


If only the border color should be changed use the property border-color.

```
.border{ border-color:rgb(68, 37, 42) }
```

If you want to add a box shadow in that color use:

Here you see how a box with a 4 pixel rgb(68, 37, 42) colored shadow looks like.

```
.boxshadow{ -moz-box-shadow:4px 4px 4px  
4px rgb(68, 37, 42); -webkit-box-  
shadow:4px 4px 4px 4px rgb(68, 37, 42);  
box-shadow:4px 4px 4px 4px rgb(68, 37, 42)  
}
```

Background

The CSS property to change the background color of an element to HunterLab 16.4901, 8.6322, 2.4364 is called "background". The background property can be set on classes, ids or directly on the HTML element.

```
.background, #background, body{  
background: rgb(68, 37, 42) }
```

If only the background color should be changed can be used:

```
.background{ background-color: rgb(68, 37,  
42) }
```

This example shows the color as background, it is applied via the CSS property "background".

To optimize and compress your CSS code, you can use our [online CSS compressor and optimizer](#) based on csstidy. If you want to create a linear or radial gradient as background or border, check our [CSS Gradient Generator](#).

Hey! You found this booklet interesting? Support Converting Colors with the new Membership Option!

The pro membership hides all ads, plus gives you double the colors in the color bucket, and more awesome pro features!

[Learn more, Memberships starting at \\$2.50/m!](#)

**Follow me
on Twitter!**

@ConvertingColor