

# Converting Colors

HunterLab(16.5736, 4.5232,  
5.1860)

Have a look what the booklet for  
HunterLab(16.5736, 4.5232, 5.1860)  
contains.

<b>HunterLab(16.5905, 4.5068, 5.1598)</b> .....	3
<b><i>Conversions</i></b> .....	4
<b><i>Details</i></b> .....	6
<b><i>Harmonies</i></b> .....	12
<b><i>Previews</i></b> .....	24
<b><i>Color Blindness Simulation</i></b> .....	28
<b><i>CSS Examples</i></b> .....	31

# Color

**HunterLab(16.5905, 4.5068,  
5.1598)**

# Conversions

## Conversions Part 1

<b>Format</b>	<b>Color</b>
Hex	3F2921
RGB	63, 41, 33
RGB Percent	25%, 16%, 13%
CMY	0.7529, 0.8392, 0.8706
CMYK	0.00, 0.35, 0.48, 0.75
HSL	16°, 31%, 19%
HSV	16°, 48%, 25%
XYZ	3.1174, 2.7524, 1.8058
YIQ	46.6660, 15.6800, 2.1760

# Conversions

## Conversions Part 2

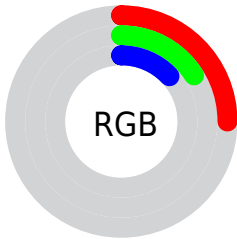
<b>Format</b>	<b>Color</b>
<a href="#">RYB</a>	<a href="#">63, 44, 33</a>
Decimal	<a href="#">4139297</a>
CIELab	<a href="#">19.02, 9.08, 9.38</a>
CIELCh	<a href="#">19, 13.059, 45.931</a>
Yxy	<a href="#">2.7526, 0.4061, 0.3586</a>
Android (android.graphics.Color)	<a href="#">4282329377 (0xFF3F2921)</a>
YUV	<a href="#">46.6660, -6.7373, 14.3249</a>
Hunter-Lab	<a href="#">16.5905, 4.5068, 5.1598</a>

# Details

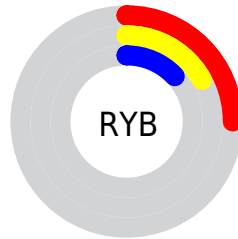
The HunterLab color **16.5905, 4.5068, 5.1598** is a dark color, and the websafe version is hex **333333**. A complement of this color would be **18.4783, -4.4144, -3.7800**, and the grayscale version is **16.7676, -0.8947, 0.9110**.

A 20% lighter version of the original color is **32.6131, 5.0455, 7.4200**, and **2.9252, 5.0094, 1.8902** is the 20% darker color. If you saturate the color by 10%, you get **15.5548, 5.9065, 5.8047**, and if you desaturate by 10%, it is **17.6913, 3.1778, 4.4362**.

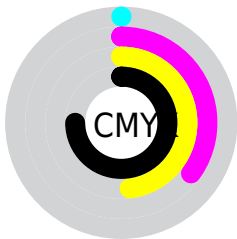
# Distribution



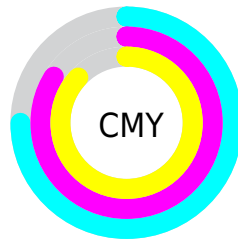
- Red (25%)
- Green (16%)
- Blue (13%)



- Red (25%)
- Yellow (17%)
- Blue (13%)



- Cyan (0%)
- Magenta (35%)
- Yellow (48%)
- Black (75%)



- Cyan (75%)
- Magenta (84%)
- Yellow (87%)

# Brightness & Saturation Gradients

These gradients show how the HunterLab color 16.5905, 4.5068, 5.1598 changes by changing the brightness by 10 percent. The first figure shows a shift by +10% for each color and the second figure -10%.

Similar to the brightness gradients but the following saturation gradients show a change of the HunterLab color 16.5905, 4.5068, 5.1598 by changing the saturation by 10% instead.



■ 16.5905, 4.5068,  
5.1598

■ 16.5905, 4.5068,  
5.1598

■ 111.8937, 3.7849,  
15.1186

■ 10.0198, 4.1309,  
4.4586

■ 32.6698, 4.8698,  
7.4375

0.0000, INF, NaN

0.0000, NaN, NaN

■ 41.9689, 4.9074,  
8.5336

0.0000, NaN, NaN

■ 52.0136, 4.8682,  
9.6210

0.0000, NaN, NaN

0.0000, NaN, NaN

■ 62.7522, 4.7617,  
10.7072

0.0000, NaN, NaN

■ 74.1423, 4.5951,  
11.7972

0.0000, NaN, NaN

■ 86.1487, 4.3738,

0.0000, NaN, NaN

12.8943

■ 98.7412, 4.1026,  
14.0009

■ 16.5905, 4.5068,  
5.1598

■ 16.5905, 4.5068,  
5.1598

■ 15.5548, 5.9065,  
5.8047

■ 17.6913, 3.1778,  
4.4362

■ 14.5910, 7.3727,  
6.3541

■ 18.8488, 1.9228,  
3.6469

■ 13.7083, 8.8901,  
6.7902

■ 20.0574, 0.7385,  
2.8033

■ 12.9146, 10.4280,  
7.1121

■ 21.3117, -0.3793,  
1.9144

■ 12.2047, 11.8837,  
7.5192

■ 22.6070, -1.4361,  
0.9874

■ 12.0482, 12.2108,  
7.6378

■ 23.9396, -2.4372,  
0.0278

■ 25.3059, -3.3883,  
-0.9598

■ 26.7030, -4.2945,  
-1.9719

■ 28.1286, -5.1606,  
-3.0058

# Harmonies

## Analogous

The Analogous color harmony consists of three colors that are next to each other on the color wheel.



16.5909, 6.7382, 2.6993



16.5905, 4.5068, 5.1598



16.5909, 0.9271, 6.3282

# Triad

The Triadic color harmony groups three colors that are evenly spaced from another and form a triangle on the color wheel.



16.5909, 4.5060, 5.1600



16.5909, -7.3936, 2.5050



16.5909, 1.1667, -7.2642

# Complementary

The Complementary color scheme is a pair of colors which are on the opposite of each other on the color wheel.



16.5905, 4.5068, 5.1598



18.4783, -4.4144, -3.7800

# Split Complementary

Split-complementary colors differ from the complementary color scheme. The scheme consists of three colors, the original color and two neighbors of the complement color.



16.5909, -2.6247, -7.3496



16.5905, 4.5068, 5.1598



16.5909, -7.3420, -1.1196

# Square

The Square scheme is like the rectangle color scheme, but the four colors are evenly spaced on the color wheel.



16.5909, 4.5060, 5.1600



16.5909, -5.8149, 5.0455



16.5909, -5.6670, -4.9053



16.5909, 4.6950, -4.6931



# Rectangle

The Rectangle color scheme consists of four colors that form a rectangle on the color wheel.



16.5905, 4.5068, 5.1598



16.5909, -1.6342, 6.4344



16.5909, -5.6670, -4.9053



16.5909, -0.1246, -7.6013

# Sweetspot

The Sweet Spot groups the original color and five complimentary colors.



16.5909, 4.5060, 5.1600



26.4855, 0.5121, 3.2928



15.5575, 10.4465, -4.0055



13.5149, 0.3276, 1.7394



62.6995, -3.3455, 3.4066



14.8260, -0.7911, 0.8055



# Same Dimension

The Same Dimension uses a secret algorithm to generate beautiful new colors.



16.5909, 4.5060, 5.1600



19.9262, 8.0026, 7.6668



19.9873, -1.5896, 8.0200



11.0195, -0.1537, 1.0305



17.6084, 19.9042, 11.1987



43.1873, 55.2409, 27.5789



# Inverse Universe

The Inverse Universe completely reimagines the original color for something new.



18.4783, -4.4144, -3.7800



22.8959, -6.2009, -6.4656



14.8319, 1.5227, -9.6327



11.2023, -1.0039, 0.1696



22.5689, -6.4696, -14.2431

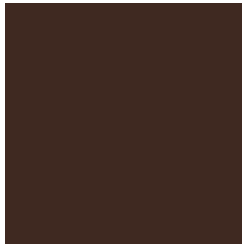


55.9879, -14.4324, -38.8247



# Previews

## White Background



This preview shows how the HunterLab color 16.5905, 4.5068, 5.1598 looks on a white background.

## Color Contrast Check

Large Text (above 18pt) WCAG AA ✓ Pass

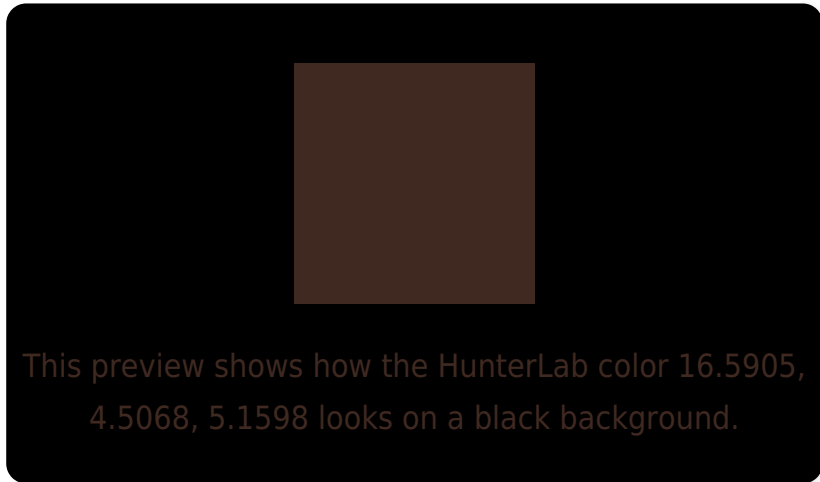
Any Text WCAG AA ✓ Pass

Large Text (above 18pt) WCAG AAA ✓ Pass

Any Text WCAG AAA ✓ Pass



# Black Background



## Color Contrast Check

Large Text (above 18pt) WCAG AA × Fail

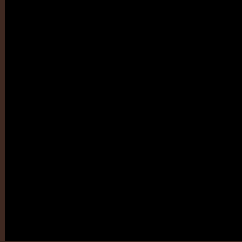
Any Text WCAG AA × Fail

Large Text (above 18pt) WCAG AAA × Fail

Any Text WCAG AAA × Fail

If you want to check with other color combinations, try the [Color Contrast Checker](#).

## HunterLab 16.5905, 4.5068, 5.1598 Background



This preview shows how black text looks on a background with the HunterLab color 16.5905, 4.5068, 5.1598.



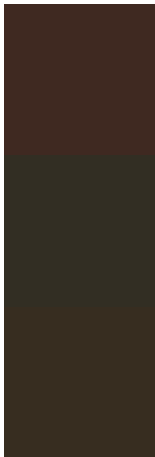
This preview shows how white text looks on a background with the HunterLab color 16.5905, 4.5068,



# Color Blindness Simulation

Color vision deficiency is a very complex topic, and I could not describe the different causes any better than Wikipedia does, so if you want to learn more, you should check out their [article about color blindness](#).

## Dichromacy



### Original Color

16.5905, 4.5068, 5.1598

### Protanopia

16.5935, -1.1155, 4.5237

### Deuteranopia

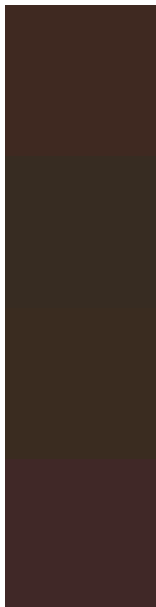
16.7131, 0.3859, 5.4576



## Tritanopia

16.6793, 6.2258, 2.2624

# Trichromacy



## Original Color

16.5905, 4.5068, 5.1598

## Protanomaly

16.5199, 0.9659, 4.7649

## Deuteranomaly

16.7487, 1.6640, 5.5122

## Tritanomaly

16.5953, 5.8007, 3.4699

# Monochromacy



## Original Color

16.5905, 4.5068, 5.1598

## Achromatopsia

16.8600, -0.8996, 0.9160

## Achromatomaly

16.7357, 0.8383, 2.5668

# CSS Examples

## Text

The CSS property to change the color of the text to HunterLab 16.5905, 4.5068, 5.1598 is called "color". The color property can be set on classes, ids or directly on the HTML element.

This example shows how text in the color `rgb(63, 41, 33)` looks like.

```
.text, #text, p{  
    color:rgb(63, 41, 33)  
}
```

If you want to add a text shadow in that color use the text-shadow property, you can generate a text shadow directly with our [CSS Text Shadow Generator](#).

Here you see how black text with a 4 pixel rgb(63, 41, 33) colored shadow looks like.

```
.shadow{ text-shadow: 4px 4px 2px rgb(63, 41, 33) }
```

## Border

The CSS property to change the border of an element to HunterLab 16.5905, 4.5068, 5.1598 is called "border".

The border property can be set on classes, ids or directly on the HTML element.

This example shows the color as border, it can be applied via the CSS property "border" or "border-color".

```
.border, #border, table{ border:4px solid rgb(63, 41, 33) }
```



If only the border color should be changed use the property `border-color`.

```
.border{ border-color:rgb(63, 41, 33) }
```

If you want to add a box shadow in that color use:

Here you see how a box with a 4 pixel `rgb(63, 41, 33)` colored shadow looks like.

```
.boxshadow{ -moz-box-shadow:4px 4px 4px  
4px rgb(63, 41, 33); -webkit-box-  
shadow:4px 4px 4px 4px rgb(63, 41, 33);  
box-shadow:4px 4px 4px 4px rgb(63, 41, 33)  
}
```

# Background

The CSS property to change the background color of an element to HunterLab 16.5905, 4.5068, 5.1598 is called "background". The background property can be set on classes, ids or directly on the HTML element.

```
.background, #background, body{  
background: rgb(63, 41, 33) }
```

If only the background color should be changed can be used:

```
.background{ background-color: rgb(63, 41,  
33) }
```

This example shows the color as background, it is applied via the CSS property "background".

To optimize and compress your CSS code, you can use our [online CSS compressor and optimizer](#) based on csstidy. If you want to create a linear or radial gradient as background or border, check our [CSS Gradient Generator](#).

Hey! You found this booklet interesting? Support Converting Colors with the new Membership Option!

The pro membership hides all ads, plus gives you double the colors in the color bucket, and more awesome pro features!

**[Learn more, Memberships starting at \\$2.50/m!](#)**

**Follow me  
on Twitter!**

@ConvertingColor