

Converting Colors

HunterLab(16.5739, 6.7980,
-0.3441)

Have a look what the booklet for
HunterLab(16.5739, 6.7980, -0.3441)
contains.

HunterLab(16.4483, 6.8959, -0.6213)	3
<i>Conversions</i>	4
<i>Details</i>	6
<i>Harmonies</i>	12
<i>Previews</i>	24
<i>Color Blindness Simulation</i>	28
<i>CSS Examples</i>	31

Color

**HunterLab(16.4483, 6.8959,
-0.6213)**

Conversions

Conversions Part 1

Format	Color
Hex	3E2732
RGB	62, 39, 50
RGB Percent	24%, 15%, 20%
CMY	0.7569, 0.8471, 0.8039
CMYK	0.00, 0.37, 0.19, 0.76
HSL	331°, 23%, 20%
HSV	331°, 37%, 24%
XYZ	3.2879, 2.7055, 3.3665
YIQ	47.1310, 10.1770, 8.2970

Conversions

Conversions Part 2

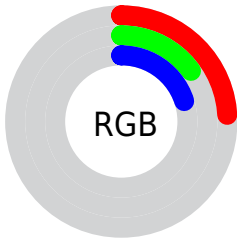
Format	Color
R_{YB}	62, 39, 50
Decimal	4073266
CIE Lab	18.82, 12.81, -2.73
CIE LCh	19, 13.101, 347.965
Yxy	2.7056, 0.3513, 0.2891
Android (android.graphics.Color)	4282263346 (0xFF3E2732)
YUV	47.1310, 1.4144, 13.0401
Hunter-Lab	16.4483, 6.8959, -0.6213

Details

The HunterLab color **16.4483, 6.8959, -0.6213** is a dark color, and the websafe version is hex **333333**. A complement of this color would be **20.2871, -7.7252, 3.2117**, and the grayscale version is **16.8969, -0.9016, 0.9180**.

A 20% lighter version of the original color is **32.4040, 7.8099, -0.1443**, and **3.6467, 6.3652, 1.4247** is the 20% darker color. If you saturate the color by 10%, you get **15.1797, 9.1053, -0.8944**, and if you desaturate by 10%, it is **17.8201, 4.6825, -0.2384**.

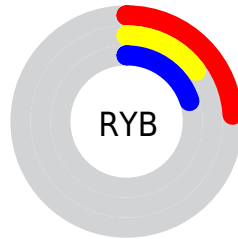
Distribution



 Red (24%)

 Green (15%)

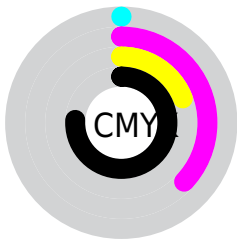
 Blue (20%)



 Red (24%)

 Yellow (15%)

 Blue (20%)

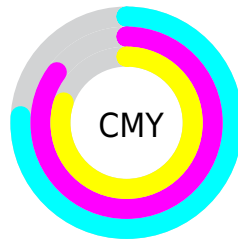


 Cyan (0%)


 Magenta (37%)

 Yellow (19%)

 Black (76%)



 Cyan (76%)

 Magenta (85%)

 Yellow (80%)

Brightness & Saturation Gradients

These gradients show how the HunterLab color 16.4483, 6.8959, -0.6213 changes by changing the brightness by 10 percent. The first figure shows a shift by +10% for each color and the second figure -10%.

Similar to the brightness gradients but the following saturation gradients show a change of the HunterLab color 16.4483, 6.8959, -0.6213 by changing the saturation by 10% instead.

■ 16.4483, 6.8959,
-0.6213

■ 16.4483, 6.8959,
-0.6213

■ 111.6247, 7.8928,
3.2970

■ 9.8997, 6.2563,
-0.7646

■ 32.4915, 7.7263,
-0.1030

0.0000, INF, -NF

0.0000, NaN, NaN

■ 41.7750, 7.9730,
0.2478

0.0000, NaN, NaN

■ 51.8053, 8.1301,
0.6501

0.0000, NaN, NaN

0.0000, NaN, NaN

■ 62.5304, 8.2090,
1.0992

0.0000, NaN, NaN

■ 73.9078, 8.2186,
1.5912

0.0000, NaN, NaN

■ 85.9022, 8.1656,

0.0000, NaN, NaN

2.1231

98.4832, 8.0555,
2.6924

16.4483, 6.8959,
-0.6213

16.4483, 6.8959,
-0.6213

15.1797, 9.1053,
-0.8944

17.8201, 4.6825,
-0.2384

14.0293, 11.2693,
-1.0338

19.2801, 2.4917,
0.2321

13.0152, 13.3200,
-1.0123

20.8168, 0.3352,
0.7732

12.1557, 15.1634,
-0.8055

22.4206, -1.7824,
1.3716

11.4557, 16.7207,
-0.4128

24.0834, -3.8611,
2.0166

■ 10.7705, 18.4101,
-0.0222

■ 25.7986, -5.9034,
2.7003

■ 10.5646, 18.9626,
0.0791

■ 27.5606, -7.9129,
3.4164

■ 29.3649, -9.8935,
4.1599

■ 31.2076, -11.8494,
4.9272

Harmonies

Analogous

The Analogous color harmony consists of three colors that are next to each other on the color wheel.



16.4487, 4.9081, -4.4720



16.4483, 6.8959, -0.6213



16.4487, 6.6653, 2.8982

Triad

The Triadic color harmony groups three colors that are evenly spaced from another and form a triangle on the color wheel.



16.4487, 6.8953, -0.6210



16.4487, -3.0721, 6.2300



16.4487, -5.4909, -5.1493

Complementary

The Complementary color scheme is a pair of colors which are on the opposite of each other on the color wheel.



16.4483, 6.8959, -0.6213



20.2871, -7.7252, 3.2117

Split Complementary

Split-complementary colors differ from the complementary color scheme. The scheme consists of three colors, the original color and two neighbors of the complement color.



16.4487, -7.2682, -1.3961



16.4483, 6.8959, -0.6213



16.4487, -5.9615, 4.9027

Square

The Square scheme is like the rectangle color scheme, but the four colors are evenly spaced on the color wheel.



16.4487, 6.8953, -0.6210



16.4487, 0.6730, 6.3460



16.4487, -7.4323, 2.2798



16.4487, -2.3746, -7.4568

Rectangle

The Rectangle color scheme consists of four colors that form a rectangle on the color wheel.



16.4483, 6.8959, -0.6213



16.4487, 5.2877, 4.6231



16.4487, -7.4323, 2.2798



16.4487, -6.2520, -3.9804

Sweetspot

The Sweet Spot groups the original color and five complimentary colors.



16.4487, 6.8953, -0.6210



26.5074, 1.6893, 0.6933



15.8106, 5.6873, -7.2485



13.5607, 0.9179, 0.3427



62.6995, -3.3455, 3.4066



14.8260, -0.7911, 0.8055

Same Dimension

The Same Dimension uses a secret algorithm to generate beautiful new colors.



16.4487, 6.8953, -0.6210



19.9906, 11.9880, -1.1776



16.2699, 5.4406, 3.1253



10.8753, 0.3253, 0.3686



16.0892, 28.7366, 1.2234



40.6799, 72.2283, 6.4196

Inverse Universe

The Inverse Universe completely reimagines the original color for something new.



16.4487, 6.8953, -0.6210



19.9906, 11.9880, -1.1776



20.4522, -6.0461, -0.7152



10.8753, 0.3253, 0.3686



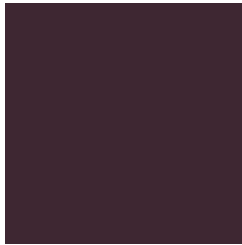
16.0892, 28.7366, 1.2234



40.6799, 72.2283, 6.4196

Previews

White Background



This preview shows how the HunterLab color 16.4483, 6.8959, -0.6213 looks on a white background.

Color Contrast Check

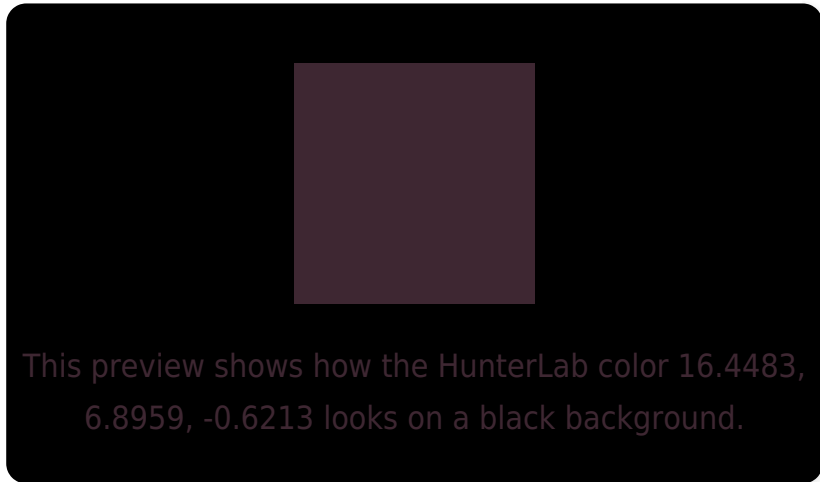
Large Text (above 18pt) WCAG AA ✓ Pass

Any Text WCAG AA ✓ Pass

Large Text (above 18pt) WCAG AAA ✓ Pass

Any Text WCAG AAA ✓ Pass

Black Background



Color Contrast Check

Large Text (above 18pt) WCAG AA × Fail

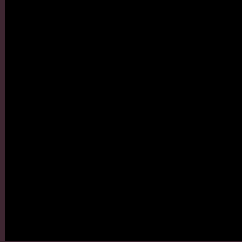
Any Text WCAG AA × Fail

Large Text (above 18pt) WCAG AAA × Fail

Any Text WCAG AAA × Fail

If you want to check with other color combinations, try the [Color Contrast Checker](#).

HunterLab 16.4483, 6.8959, -0.6213 Background



This preview shows how black text looks on a background with the HunterLab color 16.4483, 6.8959, -0.6213.



This preview shows how white text looks on a background with the HunterLab color 16.4483, 6.8959, -0.6213.

-0.6213.

Color Blindness Simulation

Color vision deficiency is a very complex topic, and I could not describe the different causes any better than Wikipedia does, so if you want to learn more, you should check out their [article about color blindness](#).

Dichromacy



Original Color

16.4483, 6.8959, -0.6213

Protanopia

16.6006, -0.2173, -2.2394

Deuteranopia

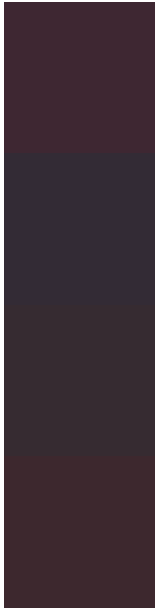
16.5876, 0.6655, -0.1532



Tritanopia

16.3832, 5.3151, 1.9172

Trichromacy



Original Color

16.4483, 6.8959, -0.6213

Protanomaly

16.3970, 2.5674, -2.0303

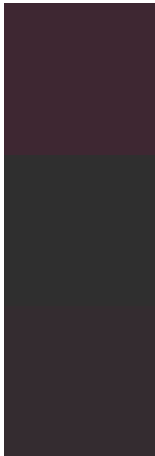
Deuteranomaly

16.5341, 2.8005, -0.1824

Tritanomaly

16.4528, 5.6691, 0.9228

Monochromacy



Original Color

16.4483, 6.8959, -0.6213

Achromatopsia

16.8600, -0.8996, 0.9160

Achromatomaly

16.5675, 1.7168, 0.2318

CSS Examples

Text

The CSS property to change the color of the text to HunterLab 16.4483, 6.8959, -0.6213 is called "color". The color property can be set on classes, ids or directly on the HTML element.

This example shows how text in the color `rgb(62, 39, 50)` looks like.

```
.text, #text, p{  
    color:rgb(62, 39, 50)  
}
```

If you want to add a text shadow in that color use the text-shadow property, you can generate a text shadow directly with our [CSS Text Shadow Generator](#).

Here you see how black text with a 4 pixel rgb(62, 39, 50) colored shadow looks like.

```
.shadow{ text-shadow: 4px 4px 2px rgb(62, 39, 50) }
```

Border

The CSS property to change the border of an element to HunterLab 16.4483, 6.8959, -0.6213 is called "border". The border property can be set on classes, ids or directly on the HTML element.

This example shows the color as border, it can be applied via the CSS property "border" or "border-color".

```
.border, #border, table{ border:4px solid rgb(62, 39, 50) }
```


If only the border color should be changed use the property `border-color`.

```
.border{ border-color:rgb(62, 39, 50) }
```

If you want to add a box shadow in that color use:

Here you see how a box with a 4 pixel `rgb(62, 39, 50)` colored shadow looks like.

```
.boxshadow{ -moz-box-shadow:4px 4px 4px  
4px rgb(62, 39, 50); -webkit-box-  
shadow:4px 4px 4px 4px rgb(62, 39, 50);  
box-shadow:4px 4px 4px 4px rgb(62, 39, 50)  
}
```

Background

The CSS property to change the background color of an element to HunterLab 16.4483, 6.8959, -0.6213 is called "background". The background property can be set on classes, ids or directly on the HTML element.

```
.background, #background, body{  
background: rgb(62, 39, 50) }
```

If only the background color should be changed can be used:

```
.background{ background-color: rgb(62, 39,  
50) }
```

This example shows the color as background, it is applied via the CSS property "background".

To optimize and compress your CSS code, you can use our [online CSS compressor and optimizer](#) based on csstidy. If you want to create a linear or radial gradient as background or border, check our [CSS Gradient Generator](#).

Hey! You found this booklet interesting? Support Converting Colors with the new Membership Option!

The pro membership hides all ads, plus gives you double the colors in the color bucket, and more awesome pro features!

[Learn more, Memberships starting at \\$2.50/m!](#)

**Follow me
on Twitter!**

@ConvertingColor