

Converting Colors

HunterLab(16.5993, 12.4218,
5.3626)

Have a look what the booklet for
HunterLab(16.5993, 12.4218,
5.3626) contains.

| | |
|--|----|
| HunterLab(16.6592, 12.4083, 5.3617) | 3 |
| <i>Conversions</i> | 4 |
| <i>Details</i> | 6 |
| <i>Harmonies</i> | 12 |
| <i>Previews</i> | 24 |
| <i>Color Blindness Simulation</i> | 28 |
| <i>CSS Examples</i> | 31 |

Color

**HunterLab(16.6592, 12.4083,
5.3617)**

Conversions

Conversions Part 1

| Format | Color |
|-------------|--------------------------|
| Hex | 4D2121 |
| RGB | 77, 33, 33 |
| RGB Percent | 30%, 13%, 13% |
| CMY | 0.6980, 0.8706, 0.8706 |
| CMYK | 0.00, 0.57, 0.57, 0.70 |
| HSL | 0°, 40%, 22% |
| HSV | 0°, 57%, 30% |
| XYZ | 3.8789, 2.7753, 1.7701 |
| YIQ | 46.1560, 26.2240, 9.3280 |

Conversions

Conversions Part 2

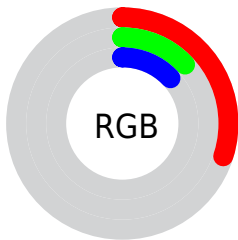
| Format | Color |
|-------------------------------------|------------------------------|
| R_{YB} | 77, 33, 33 |
| Decimal | 5054753 |
| CIE _{Lab} | 19.12, 20.76, 9.89 |
| CIE _{LCh} | 19, 22.996, 25.467 |
| Yxy | 2.7754, 0.4604, 0.3294 |
| Android (android.graphics.Color) | 4283244833 (0xFF4D2121) |
| YUV | 46.1560, -6.4859, 27.0502 |
| Hunter-Lab | 16.6592, 12.4083, 5.3617 |

Details

The HunterLab color **16.6592, 12.4083, 5.3617** is a dark color, and the websafe version is hex **663333**. A complement of this color would be **24.8326, -10.2445, -1.6412**, and the grayscale version is **16.5956, -0.8855, 0.9017**.

A 20% lighter version of the original color is **32.8556, 14.1556, 7.8231**, and **5.4175, 9.3182, 3.1871** is the 20% darker color. If you saturate the color by 10%, you get **15.3543, 14.9048, 6.1048**, and if you desaturate by 10%, it is **18.1690, 9.8425, 4.6114**.

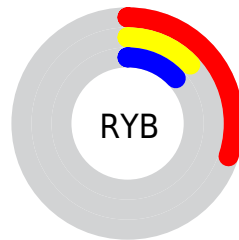
Distribution



Red (30%)

Green (13%)

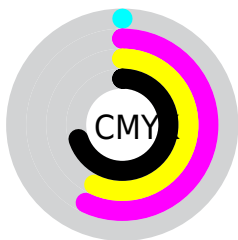
Blue (13%)



Red (30%)

Yellow (13%)

Blue (13%)

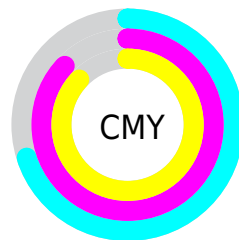


Cyan (0%)

Magenta (57%)

Yellow (57%)

Black (70%)



Cyan (70%)

Magenta (87%)

Yellow (87%)

Brightness & Saturation Gradients

These gradients show how the HunterLab color 16.6592, 12.4083, 5.3617 changes by changing the brightness by 10 percent. The first figure shows a shift by +10% for each color and the second figure -10%.

Similar to the brightness gradients but the following saturation gradients show a change of the HunterLab color 16.6592, 12.4083, 5.3617 by changing the saturation by 10% instead.

■ 16.6592, 12.4083,
5.3617

■ 16.6592, 12.4083,
5.3617

■ 112.0235, 16.8223,
15.5934

■ 10.0779, 11.3033,
4.6534

■ 32.7559, 14.1294,
7.7206

0.0000, INF, NaN

0.0000, NaN, NaN

■ 42.0626, 14.7888,
8.8506

0.0000, NaN, NaN

■ 52.1142, 15.3381,
9.9689

0.0000, NaN, NaN

0.0000, NaN, NaN

■ 62.8592, 15.7908,
11.0837

0.0000, NaN, NaN

■ 74.2555, 16.1577,
12.2004

0.0000, NaN, NaN

■ 86.2677, 16.4475,

0.0000, NaN, NaN

13.3227

98.8657, 16.6671,
14.4531

16.6592, 12.4083,
5.3617

16.6592, 12.4083,
5.3617

15.3543, 14.9048,
6.1048

18.1690, 9.8425,
4.6114

14.2829, 17.2016,
6.7972

19.8530, 7.2979,
3.8801

13.4702, 19.1272,
7.3837

21.6852, 4.8207,
3.1821

12.7689, 20.9417,
7.9413

23.6433, 2.4313,
2.5225

12.5613, 21.5098,
8.1168

25.7091, 0.1336,
1.9015

■ 27.8677, -2.0768,
1.3164

■ 30.1072, -4.2085,
0.7635

■ 32.4178, -6.2711,
0.2389

■ 34.7917, -8.2743,
-0.2613

Harmonies

Analogous

The Analogous color harmony consists of three colors that are next to each other on the color wheel.



16.6596, 13.9932, -0.0910



16.6592, 12.4083, 5.3617



16.6596, 7.0589, 8.1723

Triad

The Triadic color harmony groups three colors that are evenly spaced from another and form a triangle on the color wheel.



16.6596, 12.4072, 5.3620



16.6596, -10.2284, 6.4648



16.6596, -1.8957, -16.5157

Complementary

The Complementary color scheme is a pair of colors which are on the opposite of each other on the color wheel.



16.6592, 12.4083, 5.3617



24.8326, -10.2445, -1.6412

Split Complementary

Split-complementary colors differ from the complementary color scheme. The scheme consists of three colors, the original color and two neighbors of the complement color.



16.6596, -7.5809, -12.6745



16.6592, 12.4083, 5.3617



16.6596, -11.8840, 1.8465

Square

The Square scheme is like the rectangle color scheme, but the four colors are evenly spaced on the color wheel.



16.6596, 12.4072, 5.3620



16.6596, -6.0745, 8.6248



16.6596, -10.9970, -5.2690



16.6596, 5.0184, -14.3821

Rectangle

The Rectangle color scheme consists of four colors that form a rectangle on the color wheel.



16.6592, 12.4083, 5.3617



16.6596, 2.4673, 8.9977



16.6596, -10.9970, -5.2690



16.6596, -4.0005, -15.8488

Sweetspot

The Sweet Spot groups the original color and five complimentary colors.



16.6596, 12.4072, 5.3620



30.6799, 3.3113, 3.3257



17.8922, 18.0114, -11.9257



15.6033, 1.8437, 1.7449



66.9319, -3.5713, 3.6365



18.1947, -0.9708, 0.9886

Same Dimension

The Same Dimension uses a secret algorithm to generate beautiful new colors.



16.6596, 12.4072, 5.3620



19.3581, 20.7629, 8.3575



21.0237, 3.1242, 8.9516



13.0511, 0.2438, 1.0243



16.8074, 28.7815, 10.8605



40.9153, 70.0671, 26.4385

Inverse Universe

The Inverse Universe completely reimagines the original color for something new.



24.8326, -10.2445, -1.6412



31.9479, -14.9102, -2.6918



18.9514, -1.7723, -10.3191



13.7520, -1.6260, 0.4481



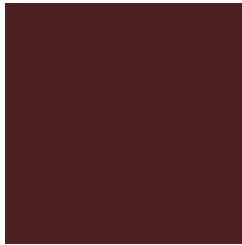
32.3435, -17.1459, -3.4134



78.7365, -41.7396, -8.3100

Previews

White Background



This preview shows how the HunterLab color 16.6592, 12.4083, 5.3617 looks on a white background.

Color Contrast Check

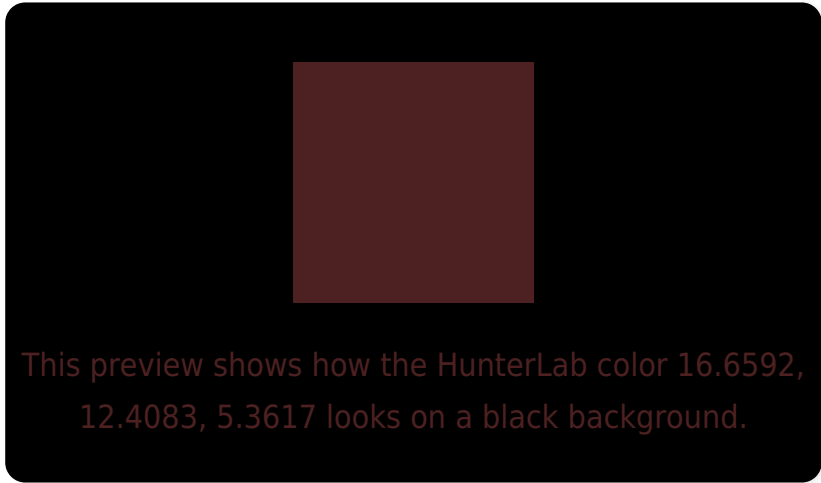
Large Text (above 18pt) WCAG AA ✓ Pass

Any Text WCAG AA ✓ Pass

Large Text (above 18pt) WCAG AAA ✓ Pass

Any Text WCAG AAA ✓ Pass

Black Background



Color Contrast Check

Large Text (above 18pt) WCAG AA × Fail

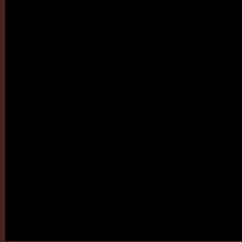
Any Text WCAG AA × Fail

Large Text (above 18pt) WCAG AAA × Fail

Any Text WCAG AAA × Fail

If you want to check with other color combinations, try the [Color Contrast Checker](#).

HunterLab 16.6592, 12.4083, 5.3617 Background



This preview shows how black text looks on a background with the HunterLab color 16.6592, 12.4083, 5.3617.



This preview shows how white text looks on a background with the HunterLab color 16.6592, 12.4083, 5.3617.

Color Blindness Simulation

Color vision deficiency is a very complex topic, and I could not describe the different causes any better than Wikipedia does, so if you want to learn more, you should check out their [article about color blindness](#).

Dichromacy



Original Color

16.6592, 12.4083, 5.3617

Protanopia

16.9045, -1.0926, 3.6652

Deuteranopia

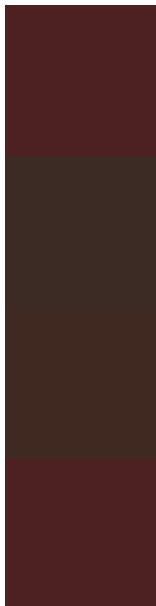
16.8688, 0.8813, 5.8536



Tritanopia

16.6938, 12.5702, 4.8593

Trichromacy



Original Color

16.6592, 12.4083, 5.3617

Protanomaly

16.5836, 3.5427, 4.0232

Deuteranomaly

16.6738, 4.7357, 5.4981

Tritanomaly

16.6763, 12.4881, 5.1139

Monochromacy



Original Color

16.6592, 12.4083, 5.3617

Achromatopsia

16.5290, -0.8819, 0.8981

Achromatomaly

16.1735, 3.4873, 2.3368

CSS Examples

Text

The CSS property to change the color of the text to HunterLab 16.6592, 12.4083, 5.3617 is called "color". The color property can be set on classes, ids or directly on the HTML element.

This example shows how text in the color `rgb(77, 33, 33)` looks like.

```
.text, #text, p{  
    color:rgb(77, 33, 33)  
}
```

If you want to add a text shadow in that color use the text-shadow property, you can generate a text shadow directly with our [CSS Text Shadow Generator](#).

Here you see how black text with a 4 pixel rgb(77, 33, 33) colored shadow looks like.

```
.shadow{ text-shadow: 4px 4px 2px rgb(77, 33, 33) }
```

Border

The CSS property to change the border of an element to HunterLab 16.6592, 12.4083, 5.3617 is called "border". The border property can be set on classes, ids or directly on the HTML element.

This example shows the color as border, it can be applied via the CSS property "border" or "border-color".

```
.border, #border, table{ border:4px solid rgb(77, 33, 33) }
```


If only the border color should be changed use the property `border-color`.

```
.border{ border-color:rgb(77, 33, 33) }
```

If you want to add a box shadow in that color use:

Here you see how a box with a 4 pixel `rgb(77, 33, 33)` colored shadow looks like.

```
.boxshadow{ -moz-box-shadow:4px 4px 4px  
4px rgb(77, 33, 33); -webkit-box-  
shadow:4px 4px 4px 4px rgb(77, 33, 33);  
box-shadow:4px 4px 4px 4px rgb(77, 33, 33)  
}
```

Background

The CSS property to change the background color of an element to HunterLab 16.6592, 12.4083, 5.3617 is called "background". The background property can be set on classes, ids or directly on the HTML element.

```
.background, #background, body{  
background: rgb(77, 33, 33) }
```

If only the background color should be changed can be used:

```
.background{ background-color: rgb(77, 33,  
33) }
```

This example shows the color as background, it is applied via the CSS property "background".

To optimize and compress your CSS code, you can use our [online CSS compressor and optimizer](#) based on csstidy. If you want to create a linear or radial gradient as background or border, check our [CSS Gradient Generator](#).

Hey! You found this booklet interesting? Support Converting Colors with the new Membership Option!

The pro membership hides all ads, plus gives you double the colors in the color bucket, and more awesome pro features!

[Learn more, Memberships starting at \\$2.50/m!](#)

**Follow me
on Twitter!**

@ConvertingColor