

Converting Colors

HunterLab(16.6037, 4.8443,
5.3025)

Have a look what the booklet for
HunterLab(16.6037, 4.8443, 5.3025)
contains.

HunterLab(16.6903, 4.8207, 5.2576)	3
<i>Conversions</i>	4
<i>Details</i>	6
<i>Harmonies</i>	12
<i>Previews</i>	24
<i>Color Blindness Simulation</i>	28
<i>CSS Examples</i>	31

Color

**HunterLab(16.6903, 4.8207,
5.2576)**

Conversions

Conversions Part 1

Format	Color
Hex	402921
RGB	64, 41, 33
RGB Percent	25%, 16%, 13%
CMY	0.7490, 0.8392, 0.8706
CMYK	0.00, 0.36, 0.48, 0.75
HSL	15°, 32%, 19%
HSV	15°, 48%, 25%
XYZ	3.1818, 2.7857, 1.8088
YIQ	46.9650, 16.2760, 2.3880

Conversions

Conversions Part 2

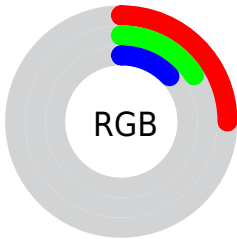
Format	Color
RYB	64, 44, 33
Decimal	4204833
CIELab	19.16, 9.57, 9.60
CIELCh	19, 13.555, 45.070
Yxy	2.7858, 0.4092, 0.3582
Android (android.graphics.Color)	4282394913 (0xFF402921)
YUV	46.9650, -6.8847, 14.9397
Hunter-Lab	16.6903, 4.8207, 5.2576

Details

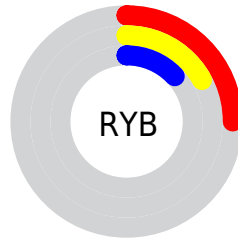
The HunterLab color **16.6903, 4.8207, 5.2576** is a dark color, and the websafe version is hex **333333**. A complement of this color would be **18.7661, -4.6220, -3.8419**, and the grayscale version is **16.8670, -0.9000, 0.9164**.

A 20% lighter version of the original color is **32.7141, 5.3752, 7.5274**, and **3.1868, 5.4575, 2.0592** is the 20% darker color. If you saturate the color by 10%, you get **15.6347, 6.2752, 5.9030**, and if you desaturate by 10%, it is **17.8147, 3.4374, 4.5329**.

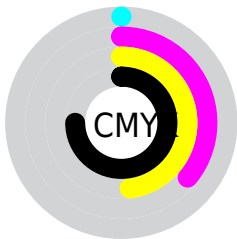
Distribution



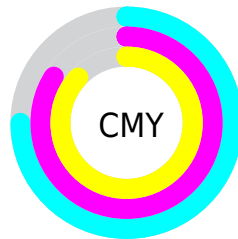
- Red (25%)
- Green (16%)
- Blue (13%)



- Red (25%)
- Yellow (17%)
- Blue (13%)



- Cyan (0%)
- Magenta (36%)
- Yellow (48%)
- Black (75%)



- Cyan (75%)
- Magenta (84%)
- Yellow (87%)

Brightness & Saturation Gradients

These gradients show how the HunterLab color 16.6903, 4.8207, 5.2576 changes by changing the brightness by 10 percent. The first figure shows a shift by +10% for each color and the second figure -10%.

Similar to the brightness gradients but the following saturation gradients show a change of the HunterLab color 16.6903, 4.8207, 5.2576 by changing the saturation by 10% instead.

■ 16.6903, 4.8207,
5.2576

■ 16.6903, 4.8207,
5.2576

■ 112.0821, 4.3168,
15.3309

■ 10.1042, 4.4115,
4.5274

■ 32.7949, 5.2427,
7.5686

0.0000, INF, NaN

0.0000, NaN, NaN

■ 42.1049, 5.3068,
8.6789

0.0000, NaN, NaN

■ 52.1596, 5.2925,
9.7793

0.0000, NaN, NaN

0.0000, NaN, NaN

■ 62.9076, 5.2095,
10.8776

0.0000, NaN, NaN

■ 74.3066, 5.0652,
11.9789

0.0000, NaN, NaN

■ 86.3214, 4.8654,

0.0000, NaN, NaN

13.0868

■ 98.9219, 4.6146,
14.2035

■ 16.6903, 4.8207,
5.2576

■ 16.6903, 4.8207,
5.2576

■ 15.6347, 6.2752,
5.9030

■ 17.8147, 3.4374,
4.5329

■ 14.6554, 7.7951,
6.4516

■ 18.9992, 2.1295,
3.7425

■ 13.7621, 9.3626,
6.8846

■ 20.2374, 0.8941,
2.8983

■ 12.9630, 10.9407,
7.2073

■ 21.5237, -0.2728,
2.0094

■ 12.2525, 12.4203,
7.6283

■ 22.8532, -1.3768,
1.0832

■ 12.1496, 12.6382,
7.7078

■ 24.2216, -2.4236,
0.1254

■ 25.6254, -3.4188,
-0.8596

■ 27.0614, -4.3678,
-1.8682

■ 28.5270, -5.2757,
-2.8976

Harmonies

Analogous

The Analogous color harmony consists of three colors that are next to each other on the color wheel.



16.6907, 7.0961, 2.6804



16.6903, 4.8207, 5.2576



16.6907, 1.1113, 6.4916

Triad

The Triadic color harmony groups three colors that are evenly spaced from another and form a triangle on the color wheel.



16.6907, 4.8199, 5.2578



16.6907, -7.6161, 2.6653



16.6907, 1.1301, -7.6847

Complementary

The Complementary color scheme is a pair of colors which are on the opposite of each other on the color wheel.



16.6903, 4.8207, 5.2576



18.7661, -4.6220, -3.8419

Split Complementary

Split-complementary colors differ from the complementary color scheme. The scheme consists of three colors, the original color and two neighbors of the complement color.



16.6907, -2.8040, -7.6915



16.6903, 4.8207, 5.2576



16.6907, -7.6121, -1.0818

Square

The Square scheme is like the rectangle color scheme, but the four colors are evenly spaced on the color wheel.



16.6907, 4.8199, 5.2578



16.6907, -5.9366, 5.2490



16.6907, -5.9251, -5.0605



16.6907, 4.8348, -5.0437

Rectangle

The Rectangle color scheme consists of four colors that form a rectangle on the color wheel.



16.6903, 4.8207, 5.2576



16.6907, -1.5576, 6.6230



16.6907, -5.9251, -5.0605



16.6907, -0.2148, -8.0122

Sweetspot

The Sweet Spot groups the original color and five complimentary colors.



16.6907, 4.8199, 5.2578



27.1231, 0.7446, 3.5002



15.7025, 10.9220, -4.3811



14.1568, 0.4650, 1.8922



63.7533, -3.4017, 3.4638



15.6573, -0.8354, 0.8507

Same Dimension

The Same Dimension uses a secret algorithm to generate beautiful new colors.



16.6907, 4.8199, 5.2578



20.3082, 8.6953, 7.9454



20.1306, -1.3991, 8.1421



11.7584, -0.1411, 1.1051



17.9768, 20.8390, 11.4420



43.5081, 56.6801, 27.8017

Inverse Universe

The Inverse Universe completely reimagines the original color for something new.



18.7661, -4.6220, -3.8419



23.6280, -6.6019, -6.6804



15.0405, 1.4140, -9.8280



11.9714, -1.0934, 0.1768



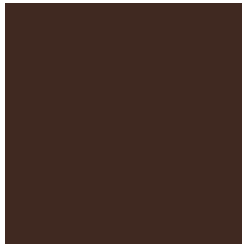
23.4126, -6.9445, -14.2725



57.3151, -15.4904, -38.1995

Previews

White Background



This preview shows how the HunterLab color 16.6903, 4.8207, 5.2576 looks on a white background.

Color Contrast Check

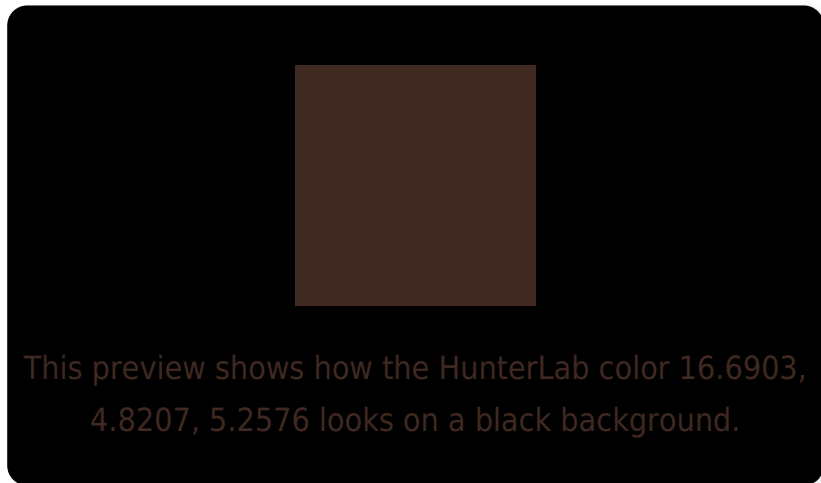
Large Text (above 18pt) WCAG AA ✓ Pass

Any Text WCAG AA ✓ Pass

Large Text (above 18pt) WCAG AAA ✓ Pass

Any Text WCAG AAA ✓ Pass

Black Background



Color Contrast Check

Large Text (above 18pt) WCAG AA × Fail

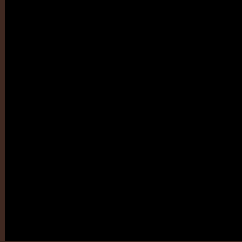
Any Text WCAG AA × Fail

Large Text (above 18pt) WCAG AAA × Fail

Any Text WCAG AAA × Fail

If you want to check with other color combinations, try the [Color Contrast Checker](#).

HunterLab 16.6903, 4.8207, 5.2576 Background



This preview shows how black text looks on a background with the HunterLab color 16.6903, 4.8207, 5.2576.

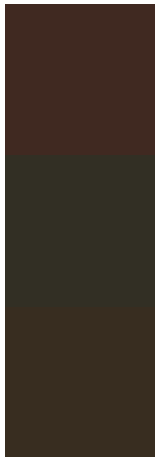


This preview shows how white text looks on a background with the HunterLab color 16.6903, 4.8207,

Color Blindness Simulation

Color vision deficiency is a very complex topic, and I could not describe the different causes any better than Wikipedia does, so if you want to learn more, you should check out their [article about color blindness](#).

Dichromacy



Original Color

16.6903, 4.8207, 5.2576

Protanopia

16.8479, -1.4039, 4.4833

Deuteranopia

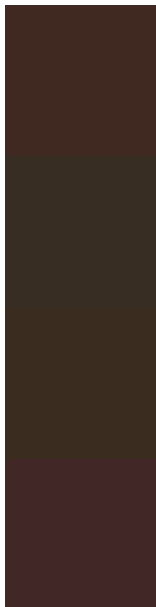
16.7982, 0.6748, 5.5397



Tritanopia

16.7804, 6.5335, 2.3791

Trichromacy



Original Color

16.6903, 4.8207, 5.2576

Protanomaly

16.7641, 0.6609, 4.7177

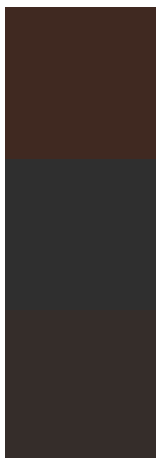
Deuteranomaly

16.8388, 1.9629, 5.5989

Tritanomaly

16.6970, 6.1124, 3.5797

Monochromacy



Original Color

16.6903, 4.8207, 5.2576

Achromatopsia

16.8600, -0.8996, 0.9160

Achromatomaly

16.7357, 0.8383, 2.5668

CSS Examples

Text

The CSS property to change the color of the text to HunterLab 16.6903, 4.8207, 5.2576 is called "color". The color property can be set on classes, ids or directly on the HTML element.

This example shows how text in the color `rgb(64, 41, 33)` looks like.

```
.text, #text, p{  
    color:rgb(64, 41, 33)  
}
```

If you want to add a text shadow in that color use the text-shadow property, you can generate a text shadow directly with our [CSS Text Shadow Generator](#).

Here you see how black text with a 4 pixel rgb(64, 41, 33) colored shadow looks like.

```
.shadow{ text-shadow: 4px 4px 2px rgb(64, 41, 33) }
```

Border

The CSS property to change the border of an element to HunterLab 16.6903, 4.8207, 5.2576 is called "border". The border property can be set on classes, ids or directly on the HTML element.

This example shows the color as border, it can be applied via the CSS property "border" or "border-color".

```
.border, #border, table{ border:4px solid rgb(64, 41, 33) }
```


If only the border color should be changed use the property `border-color`.

```
.border{ border-color:rgb(64, 41, 33) }
```

If you want to add a box shadow in that color use:

Here you see how a box with a 4 pixel `rgb(64, 41, 33)` colored shadow looks like.

```
.boxshadow{ -moz-box-shadow:4px 4px 4px  
4px rgb(64, 41, 33); -webkit-box-  
shadow:4px 4px 4px 4px rgb(64, 41, 33);  
box-shadow:4px 4px 4px 4px rgb(64, 41, 33)  
}
```

Background

The CSS property to change the background color of an element to HunterLab 16.6903, 4.8207, 5.2576 is called "background". The background property can be set on classes, ids or directly on the HTML element.

```
.background, #background, body{  
background: rgb(64, 41, 33) }
```

If only the background color should be changed can be used:

```
.background{ background-color: rgb(64, 41,  
33) }
```

This example shows the color as background, it is applied via the CSS property "background".

To optimize and compress your CSS code, you can use our [online CSS compressor and optimizer](#) based on csstidy. If you want to create a linear or radial gradient as background or border, check our [CSS Gradient Generator](#).

Hey! You found this booklet
interesting? Support Converting
Colors with the new Membership
Option!

The pro membership hides all ads, plus gives you
double the colors in the color bucket, and more
awesome pro features!

[Learn more, Memberships starting at \\$2.50/m!](#)

**Follow me
on Twitter!**

@ConvertingColor