

Converting Colors

HunterLab(16.6530, 6.2182,
4.3517)

Have a look what the booklet for
HunterLab(16.6530, 6.2182, 4.3517)
contains.

HunterLab(16.7428, 6.1383, 4.5137)	3
<i>Conversions</i>	4
<i>Details</i>	6
<i>Harmonies</i>	12
<i>Previews</i>	24
<i>Color Blindness Simulation</i>	28
<i>CSS Examples</i>	31

Color

**HunterLab(16.7428, 6.1383,
4.5137)**

Conversions

Conversions Part 1

Format	Color
Hex	422824
RGB	66, 40, 36
RGB Percent	26%, 16%, 14%
CMY	0.7412, 0.8431, 0.8588
CMYK	0.00, 0.39, 0.45, 0.74
HSL	8°, 29%, 20%
HSV	8°, 45%, 26%
XYZ	3.3240, 2.8032, 2.0350
YIQ	47.3180, 16.7800, 4.2680

Conversions

Conversions Part 2

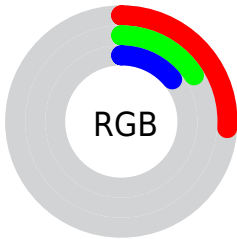
Format	Color
R_{YB}	66, 41, 36
Decimal	4335652
CIE Lab	19.24, 11.62, 7.68
CIE LCh	19, 13.930, 33.459
Yxy	2.8034, 0.4072, 0.3434
Android (android.graphics.Color)	4282525732 (0xFF422824)
YUV	47.3180, -5.5798, 16.3841
Hunter-Lab	16.7428, 6.1383, 4.5137

Details

The HunterLab color **16.7428, 6.1383, 4.5137** is a dark color, and the websafe version is hex **333333**. A complement of this color would be **20.5269, -6.0646, -2.3452**, and the grayscale version is **16.9799, -0.9060, 0.9225**.

A 20% lighter version of the original color is **32.7430, 6.8466, 6.5532**, and **3.7208, 6.3721, 2.4043** is the 20% darker color. If you saturate the color by 10%, you get **15.5217, 7.9544, 5.1636**, and if you desaturate by 10%, it is **18.0612, 4.3838, 3.8288**.

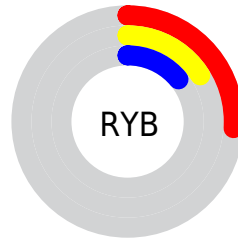
Distribution



Red (26%)

Green (16%)

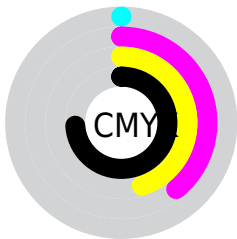
Blue (14%)



Red (26%)

Yellow (16%)

Blue (14%)

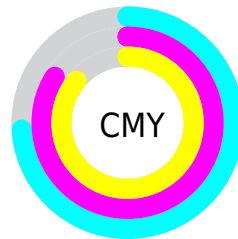


Cyan (0%)

Magenta (39%)

Yellow (45%)

Black (74%)



Cyan (74%)

Magenta (84%)

Yellow (86%)

Brightness & Saturation Gradients

These gradients show how the HunterLab color 16.7428, 6.1383, 4.5137 changes by changing the brightness by 10 percent. The first figure shows a shift by +10% for each color and the second figure -10%.

Similar to the brightness gradients but the following saturation gradients show a change of the HunterLab color 16.7428, 6.1383, 4.5137 by changing the saturation by 10% instead.

■ 16.7428, 6.1383,
4.5137

■ 16.7428, 6.1383,
4.5137

■ 112.1811, 6.5667,
13.5620

■ 10.1486, 5.5864,
3.7350

■ 32.8606, 6.8132,
6.5179

0.0000, INF, NaN

0.0000, NaN, NaN

■ 42.1763, 6.9906,
7.5007

0.0000, NaN, NaN

■ 52.2364, 7.0828,
8.4851

0.0000, NaN, NaN

0.0000, NaN, NaN

■ 62.9893, 7.1005,
9.4763

0.0000, NaN, NaN

■ 74.3929, 7.0520,
10.4777

0.0000, NaN, NaN

■ 86.4122, 6.9435,

0.0000, NaN, NaN

11.4915

99.0169, 6.7804,
12.5193

16.7428, 6.1383,
4.5137

16.7428, 6.1383,
4.5137

15.5217, 7.9544,
5.1636

18.0612, 4.3838,
3.8288

14.4110, 9.8114,
5.7596

19.4631, 2.7033,
3.1209

13.4270, 11.6669,
6.2784

20.9381, 1.0975,
2.3990

12.5858, 13.4561,
6.6921

22.4773, -0.4368,
1.6687

11.8892, 15.0397,
7.1597

24.0732, -1.9053,
0.9334

■ 11.6162, 15.6650,
7.4321

■ 25.7195, -3.3146,
0.1954

■ 27.4110, -4.6713,
-0.5444

■ 29.1434, -5.9820,
-1.2852

■ 30.9130, -7.2524,
-2.0269

Harmonies

Analogous

The Analogous color harmony consists of three colors that are next to each other on the color wheel.



16.7432, 7.6427, 1.3537



16.7428, 6.1383, 4.5137



16.7432, 2.7430, 6.2914

Triad

The Triadic color harmony groups three colors that are evenly spaced from another and form a triangle on the color wheel.



16.7432, 6.1375, 4.5140



16.7432, -7.3280, 3.9047



16.7432, -0.4202, -8.3374

Complementary

The Complementary color scheme is a pair of colors which are on the opposite of each other on the color wheel.



16.7428, 6.1383, 4.5137



20.5269, -6.0646, -2.3452

Split Complementary

Split-complementary colors differ from the complementary color scheme. The scheme consists of three colors, the original color and two neighbors of the complement color.



16.7432, -4.2453, -7.1970



16.7428, 6.1383, 4.5137



16.7432, -8.0030, 0.4566

Square

The Square scheme is like the rectangle color scheme, but the four colors are evenly spaced on the color wheel.



16.7432, 6.1375, 4.5140



16.7432, -4.9889, 6.0031



16.7432, -6.9283, -3.7275



16.7432, 3.6361, -6.5531

Rectangle

The Rectangle color scheme consists of four colors that form a rectangle on the color wheel.



16.7428, 6.1383, 4.5137



16.7432, 0.0054, 6.7428



16.7432, -6.9283, -3.7275



16.7432, -1.7753, -8.2848

Sweetspot

The Sweet Spot groups the original color and five complimentary colors.



16.7432, 6.1375, 4.5140



27.7628, 1.2726, 3.0810



16.6368, 11.0897, -5.7960



14.0332, 0.7489, 1.6151



63.7533, -3.4017, 3.4638



15.6573, -0.8354, 0.8507

Same Dimension

The Same Dimension uses a secret algorithm to generate beautiful new colors.



16.7432, 6.1375, 4.5140



20.1592, 10.9573, 6.9648



20.0450, -0.0697, 7.4135



11.6677, 0.0140, 1.0042



16.7983, 24.3931, 10.7781



41.0321, 64.4747, 26.4125

Inverse Universe

The Inverse Universe completely reimagines the original color for something new.



20.5269, -6.0646, -2.3452



26.2717, -9.0214, -4.1738



16.7377, -0.2035, -7.9479



12.0655, -1.2456, 0.2881



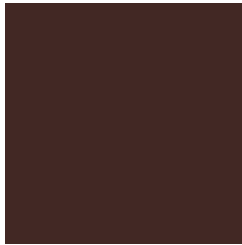
26.8291, -11.5464, -8.6087



66.4802, -27.9896, -22.6729

Previews

White Background



This preview shows how the HunterLab color 16.7428, 6.1383, 4.5137 looks on a white background.

Color Contrast Check

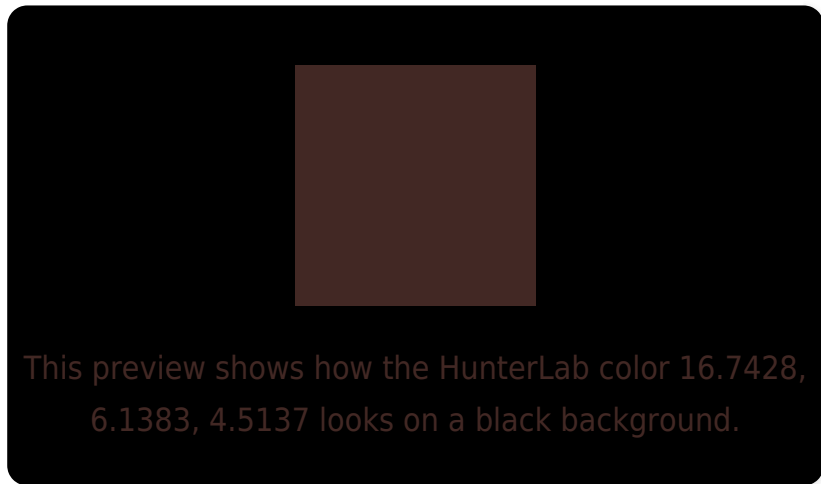
Large Text (above 18pt) WCAG AA ✓ Pass

Any Text WCAG AA ✓ Pass

Large Text (above 18pt) WCAG AAA ✓ Pass

Any Text WCAG AAA ✓ Pass

Black Background



Color Contrast Check

Large Text (above 18pt) WCAG AA × Fail

Any Text WCAG AA × Fail

Large Text (above 18pt) WCAG AAA × Fail

Any Text WCAG AAA × Fail

If you want to check with other color combinations, try the [Color Contrast Checker](#).

HunterLab 16.7428, 6.1383, 4.5137 Background



This preview shows how black text looks on a background with the HunterLab color 16.7428, 6.1383, 4.5137.



This preview shows how white text looks on a background with the HunterLab color 16.7428, 6.1383,

Color Blindness Simulation

Color vision deficiency is a very complex topic, and I could not describe the different causes any better than Wikipedia does, so if you want to learn more, you should check out their [article about color blindness](#).

Dichromacy



Original Color

16.7428, 6.1383, 4.5137

Protanopia

16.9045, -1.0926, 3.6652

Deuteranopia

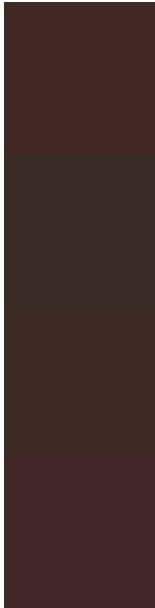
16.8490, 0.9475, 4.8034



Tritanopia

16.6627, 7.1580, 2.5985

Trichromacy



Original Color

16.7428, 6.1383, 4.5137

Protanomaly

16.6795, 1.6471, 3.7884

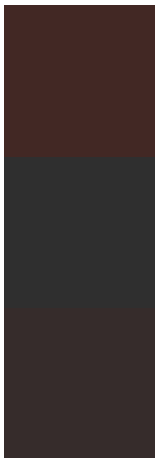
Deuteranomaly

16.7623, 2.9397, 4.7560

Tritanomaly

16.6207, 6.9481, 3.2021

Monochromacy



Original Color

16.7428, 6.1383, 4.5137

Achromatopsia

16.8600, -0.8996, 0.9160

Achromatomaly

16.6134, 1.6344, 2.1092

CSS Examples

Text

The CSS property to change the color of the text to HunterLab 16.7428, 6.1383, 4.5137 is called "color". The color property can be set on classes, ids or directly on the HTML element.

This example shows how text in the color `rgb(66, 40, 36)` looks like.

```
.text, #text, p{  
    color:rgb(66, 40, 36)  
}
```

If you want to add a text shadow in that color use the text-shadow property, you can generate a text shadow directly with our [CSS Text Shadow Generator](#).

Here you see how black text with a 4 pixel rgb(66, 40, 36) colored shadow looks like.

```
.shadow{ text-shadow: 4px 4px 2px rgb(66, 40, 36) }
```

Border

The CSS property to change the border of an element to HunterLab 16.7428, 6.1383, 4.5137 is called "border". The border property can be set on classes, ids or directly on the HTML element.

This example shows the color as border, it can be applied via the CSS property "border" or "border-color".

```
.border, #border, table{ border:4px solid rgb(66, 40, 36) }
```


If only the border color should be changed use the property `border-color`.

```
.border{ border-color:rgb(66, 40, 36) }
```

If you want to add a box shadow in that color use:

Here you see how a box with a 4 pixel `rgb(66, 40, 36)` colored shadow looks like.

```
.boxshadow{ -moz-box-shadow:4px 4px 4px  
4px rgb(66, 40, 36); -webkit-box-  
shadow:4px 4px 4px 4px rgb(66, 40, 36);  
box-shadow:4px 4px 4px 4px rgb(66, 40, 36)  
}
```

Background

The CSS property to change the background color of an element to HunterLab 16.7428, 6.1383, 4.5137 is called "background". The background property can be set on classes, ids or directly on the HTML element.

```
.background, #background, body{  
background: rgb(66, 40, 36) }
```

If only the background color should be changed can be used:

```
.background{ background-color: rgb(66, 40,  
36) }
```

This example shows the color as background, it is applied via the CSS property "background".

To optimize and compress your CSS code, you can use our [online CSS compressor and optimizer](#) based on csstidy. If you want to create a linear or radial gradient as background or border, check our [CSS Gradient Generator](#).

Hey! You found this booklet interesting? Support Converting Colors with the new Membership Option!

The pro membership hides all ads, plus gives you double the colors in the color bucket, and more awesome pro features!

[Learn more, Memberships starting at \\$2.50/m!](#)

**Follow me
on Twitter!**

@ConvertingColor