

Converting Colors

HunterLab(16.7676, 8.4227,
3.0617)

Have a look what the booklet for
HunterLab(16.7676, 8.4227, 3.0617)
contains.

HunterLab(16.7676, 8.4227, 3.0617)	3
<i>Conversions</i>	4
<i>Details</i>	6
<i>Harmonies</i>	12
<i>Previews</i>	24
<i>Color Blindness Simulation</i>	28
<i>CSS Examples</i>	31

Color

**HunterLab(16.7676, 8.4227,
3.0617)**

Conversions

Conversions Part 1

Format	Color
Hex	452629
RGB	69, 38, 41
RGB Percent	27%, 15%, 16%
CMY	0.7294, 0.8510, 0.8392
CMYK	0.00, 0.45, 0.41, 0.73
HSL	354°, 29%, 21%
HSV	354°, 45%, 27%
XYZ	3.5476, 2.8115, 2.4535
YIQ	47.6110, 17.5130, 7.5050

Conversions

Conversions Part 2

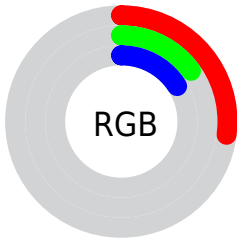
Format	Color
R_{YB}	69, 38, 41
Decimal	4531753
CIE _{Lab}	19.27, 15.06, 4.33
CIE _{LCh}	19, 15.667, 16.026
Yxy	2.8117, 0.4026, 0.3190
Android (android.graphics.Color)	4282721833 (0xFF452629)
YUV	47.6110, -3.2592, 18.7582
Hunter-Lab	16.7676, 8.4227, 3.0617

Details

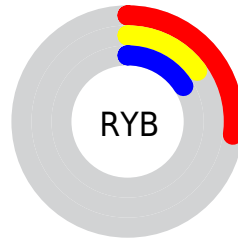
The HunterLab color **16.7676, 8.4227, 3.0617** is a dark color, and the websafe version is hex **663333**. A complement of this color would be **22.4983, -8.3428, 0.1335**, and the grayscale version is **17.0695, -0.9108, 0.9274**.

A 20% lighter version of the original color is **32.8334, 9.8497, 4.5060**, and **4.5702, 7.8745, 2.5814** is the 20% darker color. If you saturate the color by 10%, you get **15.3964, 10.6988, 3.6205**, and if you desaturate by 10%, it is **18.2801, 6.1575, 2.5692**.

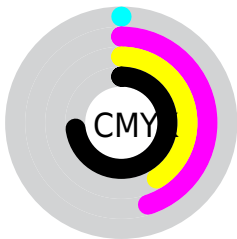
Distribution



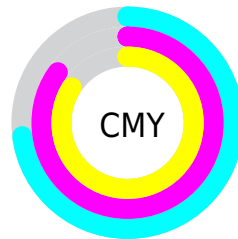
- Red (27%)
- Green (15%)
- Blue (16%)



- Red (27%)
- Yellow (15%)
- Blue (16%)



- Cyan (0%)
- Magenta (45%)
- Yellow (41%)
- Black (73%)



- Cyan (73%)
- Magenta (85%)
- Yellow (84%)

Brightness & Saturation Gradients

These gradients show how the HunterLab color 16.7676, 8.4227, 3.0617 changes by changing the brightness by 10 percent. The first figure shows a shift by +10% for each color and the second figure -10%.

Similar to the brightness gradients but the following saturation gradients show a change of the HunterLab color 16.7676, 8.4227, 3.0617 by changing the saturation by 10% instead.

■ 16.7676, 8.4227,
3.0617

■ 16.7676, 8.4227,
3.0617

■ 112.2278, 10.3835,
10.3749

■ 10.1696, 7.6463,
2.3649

■ 32.8917, 9.5071,
4.5524

0.0000, INF, NaN

0.0000, NaN, NaN

■ 42.2101, 9.8703,
5.3203

0.0000, NaN, NaN

■ 52.2726, 10.1378,
6.1081

0.0000, NaN, NaN

0.0000, NaN, NaN

■ 63.0278, 10.3218,
6.9173

0.0000, NaN, NaN

■ 74.4337, 10.4317,
7.7484

0.0000, NaN, NaN

■ 86.4550, 10.4749,

0.0000, NaN, NaN

8.6017

99.0617, 10.4572,
9.4773

16.7676, 8.4227,
3.0617

16.7676, 8.4227,
3.0617

15.3964, 10.6988,
3.6205

18.2801, 6.1575,
2.5692

14.1890, 12.9241,
4.2372

19.9121, 3.9410,
2.1417

13.1706, 14.9968,
4.8919

21.6464, 1.7878,
1.7747

12.3640, 16.7834,
5.5485

23.4688, -0.2983,
1.4618

11.6739, 18.5029,
6.0826

25.3676, -2.3201,
1.1960

■ 11.3130, 19.5031,
6.3080

■ 27.3333, -4.2834,
0.9712

■ 29.3583, -6.1952,
0.7814

■ 31.4362, -8.0624,
0.6218

■ 33.5618, -9.8917,
0.4882

Harmonies

Analogous

The Analogous color harmony consists of three colors that are next to each other on the color wheel.



16.7680, 8.5204, -1.2357



16.7676, 8.4227, 3.0617



16.7680, 5.6579, 5.8861

Triad

The Triadic color harmony groups three colors that are evenly spaced from another and form a triangle on the color wheel.



16.7680, 8.4218, 3.0620



16.7680, -6.7669, 5.7444



16.7680, -2.9668, -9.4042

Complementary

The Complementary color scheme is a pair of colors which are on the opposite of each other on the color wheel.



16.7676, 8.4227, 3.0617



22.4983, -8.3428, 0.1335

Split Complementary

Split-complementary colors differ from the complementary color scheme. The scheme consists of three colors, the original color and two neighbors of the complement color.



16.7680, -6.5754, -6.2930



16.7676, 8.4227, 3.0617



16.7680, -8.6048, 2.8098

Square

The Square scheme is like the rectangle color scheme, but the four colors are evenly spaced on the color wheel.



16.7680, 8.4218, 3.0620



16.7680, -3.2551, 7.1269



16.7680, -8.5387, -1.5651



16.7680, 1.6021, -9.2833

Rectangle

The Rectangle color scheme consists of four colors that form a rectangle on the color wheel.



16.7676, 8.4227, 3.0617



16.7680, 2.8294, 6.8987



16.7680, -8.5387, -1.5651



16.7680, -4.3214, -8.6720

Sweetspot

The Sweet Spot groups the original color and five complimentary colors.



16.7680, 8.4218, 3.0620



28.4539, 1.9366, 2.2448



17.2360, 11.3384, -8.5480



14.6589, 1.1834, 1.1960



64.8100, -3.4581, 3.5212



16.4960, -0.8802, 0.8963

Same Dimension

The Same Dimension uses a secret algorithm to generate beautiful new colors.



16.7680, 8.4218, 3.0620



19.8014, 14.2628, 4.7992



19.2894, 2.9065, 6.3001



12.3151, 0.2534, 0.8498



16.4291, 28.2636, 9.6214



40.4728, 69.4536, 25.0466

Inverse Universe

The Inverse Universe completely reimagines the original color for something new.



16.7680, 8.4218, 3.0620



19.8014, 14.2628, 4.7992



19.3099, -3.1296, -5.4434



12.3151, 0.2534, 0.8498



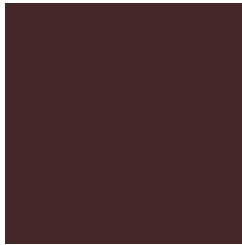
16.4291, 28.2636, 9.6214



40.4728, 69.4536, 25.0466

Previews

White Background



This preview shows how the HunterLab color 16.7676, 8.4227, 3.0617 looks on a white background.

Color Contrast Check

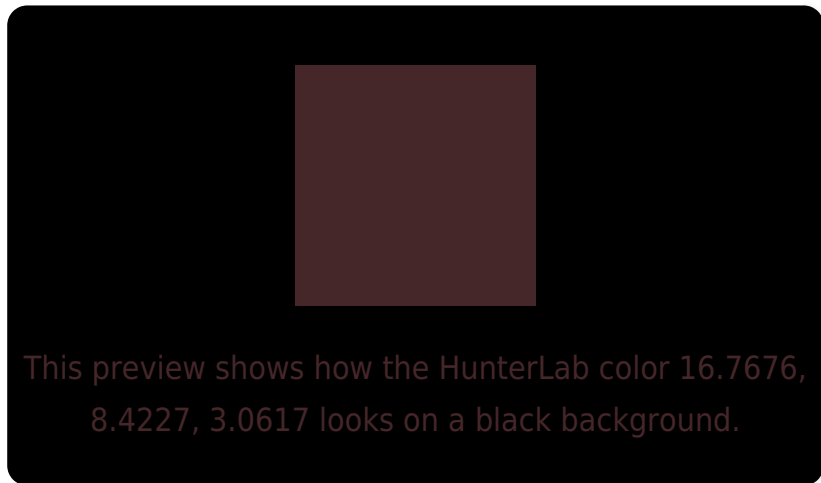
Large Text (above 18pt) WCAG AA ✓ Pass

Any Text WCAG AA ✓ Pass

Large Text (above 18pt) WCAG AAA ✓ Pass

Any Text WCAG AAA ✓ Pass

Black Background



Color Contrast Check

Large Text (above 18pt) WCAG AA × Fail

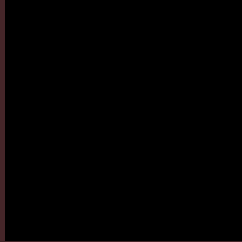
Any Text WCAG AA × Fail

Large Text (above 18pt) WCAG AAA × Fail

Any Text WCAG AAA × Fail

If you want to check with other color combinations, try the [Color Contrast Checker](#).

HunterLab 16.7676, 8.4227, 3.0617 Background



This preview shows how black text looks on a background with the HunterLab color 16.7676, 8.4227, 3.0617.

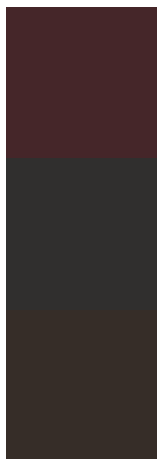


This preview shows how white text looks on a background with the HunterLab color 16.7676, 8.4227,

Color Blindness Simulation

Color vision deficiency is a very complex topic, and I could not describe the different causes any better than Wikipedia does, so if you want to learn more, you should check out their [article about color blindness](#).

Dichromacy



Original Color

16.7676, 8.4227, 3.0617

Protanopia

16.9076, -0.7816, 1.3407

Deuteranopia

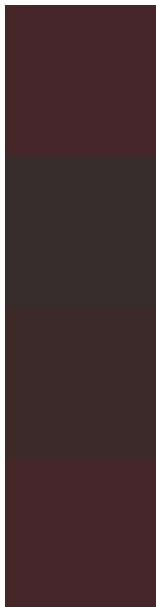
16.7757, 0.8900, 3.2577



Tritanopia

16.7676, 8.4227, 3.0617

Trichromacy



Original Color

16.7676, 8.4227, 3.0617

Protanomaly

16.8047, 2.3113, 1.9882

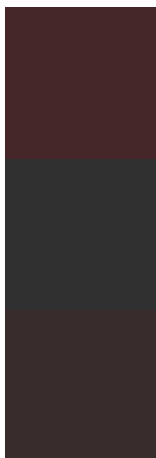
Deuteranomaly

16.5497, 3.5525, 3.0682

Tritanomaly

16.7676, 8.4227, 3.0617

Monochromacy



Original Color

16.7676, 8.4227, 3.0617

Achromatopsia

17.1921, -0.9173, 0.9341

Achromatomaly

16.8273, 2.4309, 1.6641

CSS Examples

Text

The CSS property to change the color of the text to HunterLab 16.7676, 8.4227, 3.0617 is called "color". The color property can be set on classes, ids or directly on the HTML element.

This example shows how text in the color `rgb(69, 38, 41)` looks like.

```
.text, #text, p{  
    color:rgb(69, 38, 41)  
}
```

If you want to add a text shadow in that color use the text-shadow property, you can generate a text shadow directly with our [CSS Text Shadow Generator](#).

Here you see how black text with a 4 pixel rgb(69, 38, 41) colored shadow looks like.

```
.shadow{ text-shadow: 4px 4px 2px rgb(69, 38, 41) }
```

Border

The CSS property to change the border of an element to HunterLab 16.7676, 8.4227, 3.0617 is called "border".

The border property can be set on classes, ids or directly on the HTML element.

This example shows the color as border, it can be applied via the CSS property "border" or "border-color".

```
.border, #border, table{ border:4px solid rgb(69, 38, 41) }
```


If only the border color should be changed use the property `border-color`.

```
.border{ border-color:rgb(69, 38, 41) }
```

If you want to add a box shadow in that color use:

Here you see how a box with a 4 pixel `rgb(69, 38, 41)` colored shadow looks like.

```
.boxshadow{ -moz-box-shadow:4px 4px 4px  
4px rgb(69, 38, 41); -webkit-box-  
shadow:4px 4px 4px 4px rgb(69, 38, 41);  
box-shadow:4px 4px 4px 4px rgb(69, 38, 41)  
}
```

Background

The CSS property to change the background color of an element to HunterLab 16.7676, 8.4227, 3.0617 is called "background". The background property can be set on classes, ids or directly on the HTML element.

```
.background, #background, body{  
background: rgb(69, 38, 41) }
```

If only the background color should be changed can be used:

```
.background{ background-color: rgb(69, 38,  
41) }
```

This example shows the color as background, it is applied via the CSS property "background".

To optimize and compress your CSS code, you can use our [online CSS compressor and optimizer](#) based on csstidy. If you want to create a linear or radial gradient as background or border, check our [CSS Gradient Generator](#).

Hey! You found this booklet interesting? Support Converting Colors with the new Membership Option!

The pro membership hides all ads, plus gives you double the colors in the color bucket, and more awesome pro features!

[Learn more, Memberships starting at \\$2.50/m!](#)

**Follow me
on Twitter!**

@ConvertingColor