

Converting Colors

HunterLab(16.8074, 5.4786,
4.0184)

Have a look what the booklet for
HunterLab(16.8074, 5.4786, 4.0184)
contains.

HunterLab(16.8809, 5.5937, 4.0593)	3
<i>Conversions</i>	4
<i>Details</i>	6
<i>Harmonies</i>	12
<i>Previews</i>	24
<i>Color Blindness Simulation</i>	28
<i>CSS Examples</i>	31

Color

**HunterLab(16.8809, 5.5937,
4.0593)**

Conversions

Conversions Part 1

Format	Color
Hex	412926
RGB	65, 41, 38
RGB Percent	25%, 16%, 15%
CMY	0.7451, 0.8392, 0.8510
CMYK	0.00, 0.37, 0.42, 0.75
HSL	7°, 26%, 20%
HSV	7°, 42%, 25%
XYZ	3.3228, 2.8496, 2.2086
YIQ	47.8340, 15.2670, 4.1550

Conversions

Conversions Part 2

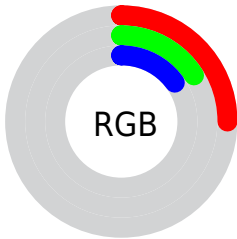
Format	Color
R_{YB}	65, 41, 38
Decimal	4270374
CIE _{Lab}	19.43, 10.77, 6.54
CIE _{LCh}	19, 12.600, 31.292
Yxy	2.8498, 0.3965, 0.3400
Android (android.graphics.Color)	4282460454 (0xFF412926)
YUV	47.8340, -4.8482, 15.0546
Hunter-Lab	16.8809, 5.5937, 4.0593

Details

The HunterLab color **16.8809, 5.5937, 4.0593** is a dark color, and the websafe version is hex **333333**. A complement of this color would be **20.5884, -5.8928, -1.8185**, and the grayscale version is **17.1493, -0.9150, 0.9318**.

A 20% lighter version of the original color is **32.9507, 6.4135, 5.6912**, and **3.7208, 6.3721, 2.4043** is the 20% darker color. If you saturate the color by 10%, you get **15.6229, 7.4121, 4.7045**, and if you desaturate by 10%, it is **18.2343, 3.8382, 3.3936**.

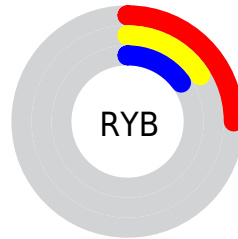
Distribution



Red (25%)

Green (16%)

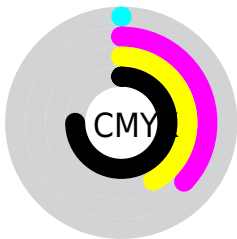
Blue (15%)



Red (25%)

Yellow (16%)

Blue (15%)

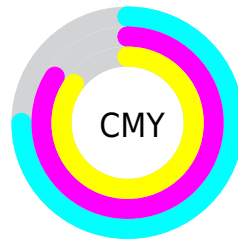


Cyan (0%)

Magenta (37%)

Yellow (42%)

Black (75%)



Cyan (75%)

Magenta (84%)

Yellow (85%)

Brightness & Saturation Gradients

These gradients show how the HunterLab color 16.8809, 5.5937, 4.0593 changes by changing the brightness by 10 percent. The first figure shows a shift by +10% for each color and the second figure -10%.

Similar to the brightness gradients but the following saturation gradients show a change of the HunterLab color 16.8809, 5.5937, 4.0593 by changing the saturation by 10% instead.

■ 16.8809, 5.5937,
4.0593

■ 16.8809, 5.5937,
4.0593

■ 112.4412, 5.6201,
12.5131

■ 10.2656, 5.1043,
3.2620

■ 33.0334, 6.1588,
5.8858

0.0000, INF, NaN

0.0000, NaN, NaN

■ 42.3641, 6.2872,
6.7949

0.0000, NaN, NaN

■ 52.4380, 6.3335,
7.7119

0.0000, NaN, NaN

0.0000, NaN, NaN

■ 63.2039, 6.3079,
8.6409

0.0000, NaN, NaN

■ 74.6198, 6.2182,
9.5843

0.0000, NaN, NaN

■ 86.6506, 6.0706,

0.0000, NaN, NaN

10.5435

99.2664, 5.8698,
11.5196

16.8809, 5.5937,
4.0593

16.8809, 5.5937,
4.0593

15.6229, 7.4121,
4.7045

18.2343, 3.8382,
3.3936

14.4735, 9.2757,
5.3132

19.6694, 2.1558,
2.7169

13.4495, 11.1450,
5.8642

21.1759, 0.5459,
2.0357

12.5678, 12.9585,
6.3301

22.7451, -0.9955,
1.3539

11.8390, 14.6076,
6.7598

24.3697, -2.4743,
0.6735

■ 11.3167, 15.8179,
7.2502

■ 26.0436, -3.8973,
-0.0047

■ 27.7618, -5.2711,
-0.6803

■ 29.5200, -6.6020,
-1.3534

■ 31.3147, -7.8956,
-2.0244

Harmonies

Analogous

The Analogous color harmony consists of three colors that are next to each other on the color wheel.



16.8813, 6.7858, 1.0703



16.8809, 5.5937, 4.0593



16.8813, 2.6400, 5.8279

Triad

The Triadic color harmony groups three colors that are evenly spaced from another and form a triangle on the color wheel.



16.8813, 5.5929, 4.0596



16.8813, -6.6800, 3.8477



16.8813, -0.7415, -7.3083

Complementary

The Complementary color scheme is a pair of colors which are on the opposite of each other on the color wheel.



16.8809, 5.5937, 4.0593



20.5884, -5.8928, -1.8185

Split Complementary

Split-complementary colors differ from the complementary color scheme. The scheme consists of three colors, the original color and two neighbors of the complement color.



16.8813, -4.1735, -6.1300



16.8809, 5.5937, 4.0593



16.8813, -7.4201, 0.7661

Square

The Square scheme is like the rectangle color scheme, but the four colors are evenly spaced on the color wheel.



16.8813, 5.5929, 4.0596



16.8813, -4.4280, 5.7253



16.8813, -6.5421, -2.9722



16.8813, 2.9403, -5.9187

Rectangle

The Rectangle color scheme consists of four colors that form a rectangle on the color wheel.



16.8809, 5.5937, 4.0593



16.8813, 0.1850, 6.3179



16.8813, -6.5421, -2.9722



16.8813, -1.9615, -7.1980

Sweetspot

The Sweet Spot groups the original color and five complimentary colors.



16.8813, 5.5929, 4.0596



27.2814, 0.9063, 2.7268



16.9150, 9.9806, -5.5286



14.2826, 0.5140, 1.4478



63.7533, -3.4017, 3.4638



15.6573, -0.8354, 0.8507

Same Dimension

The Same Dimension uses a secret algorithm to generate beautiful new colors.



16.8813, 5.5929, 4.0596



20.1810, 9.7526, 6.1501



19.8009, 0.1302, 6.7127



11.6516, 0.0417, 0.9862



16.6435, 24.8868, 10.6913



40.7483, 65.4121, 26.2541

Inverse Universe

The Inverse Universe completely reimagines the original color for something new.



20.5884, -5.8928, -1.8185



26.0704, -8.6898, -3.2329



17.2444, -0.7445, -6.5817



12.0823, -1.2726, 0.3079



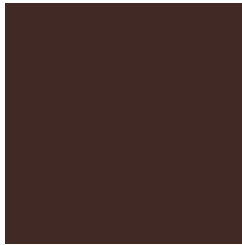
27.4539, -12.3430, -7.6700



68.1612, -30.1467, -20.1176

Previews

White Background



This preview shows how the HunterLab color 16.8809, 5.5937, 4.0593 looks on a white background.

Color Contrast Check

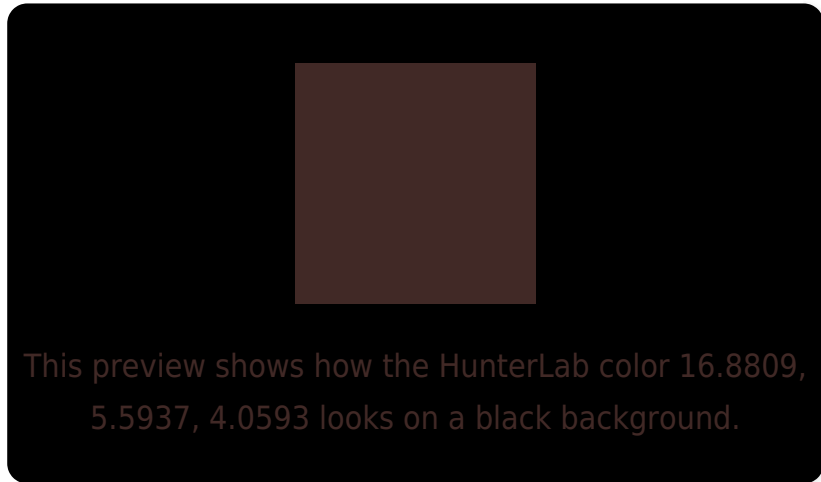
Large Text (above 18pt) WCAG AA ✓ Pass

Any Text WCAG AA ✓ Pass

Large Text (above 18pt) WCAG AAA ✓ Pass

Any Text WCAG AAA ✓ Pass

Black Background



Color Contrast Check

Large Text (above 18pt) WCAG AA × Fail

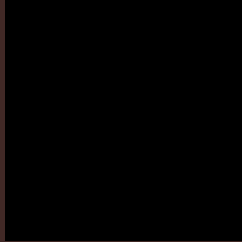
Any Text WCAG AA × Fail

Large Text (above 18pt) WCAG AAA × Fail

Any Text WCAG AAA × Fail

If you want to check with other color combinations, try the [Color Contrast Checker](#).

HunterLab 16.8809, 5.5937, 4.0593 Background



This preview shows how black text looks on a background with the HunterLab color 16.8809, 5.5937, 4.0593.

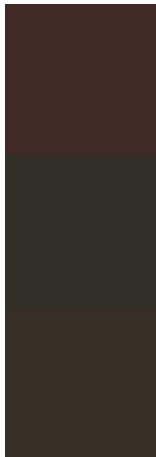


This preview shows how white text looks on a background with the HunterLab color 16.8809, 5.5937,

Color Blindness Simulation

Color vision deficiency is a very complex topic, and I could not describe the different causes any better than Wikipedia does, so if you want to learn more, you should check out their [article about color blindness](#).

Dichromacy



Original Color

16.8809, 5.5937, 4.0593

Protanopia

16.9447, -0.8721, 3.0857

Deuteranopia

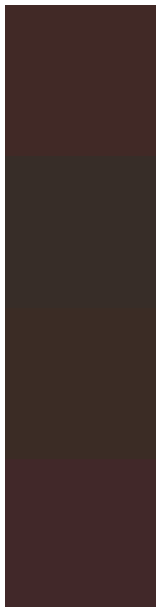
17.0288, 0.4564, 4.4070



Tritanopia

16.7804, 6.5335, 2.3791

Trichromacy



Original Color

16.8809, 5.5937, 4.0593

Protanomaly

16.8588, 1.1696, 3.3488

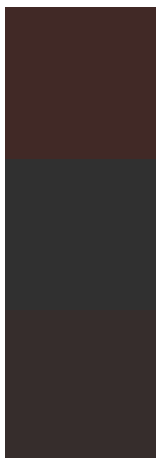
Deuteranomaly

16.9256, 2.4222, 4.3407

Tritanomaly

16.7377, 6.3181, 2.9932

Monochromacy



Original Color

16.8809, 5.5937, 4.0593

Achromatopsia

17.1921, -0.9173, 0.9341

Achromatomaly

16.8609, 1.3464, 2.0340

CSS Examples

Text

The CSS property to change the color of the text to HunterLab 16.8809, 5.5937, 4.0593 is called "color". The color property can be set on classes, ids or directly on the HTML element.

This example shows how text in the color `rgb(65, 41, 38)` looks like.

```
.text, #text, p{  
    color:rgb(65, 41, 38)  
}
```

If you want to add a text shadow in that color use the text-shadow property, you can generate a text shadow directly with our [CSS Text Shadow Generator](#).

Here you see how black text with a 4 pixel rgb(65, 41, 38) colored shadow looks like.

```
.shadow{ text-shadow: 4px 4px 2px rgb(65, 41, 38) }
```

Border

The CSS property to change the border of an element to HunterLab 16.8809, 5.5937, 4.0593 is called "border". The border property can be set on classes, ids or directly on the HTML element.

This example shows the color as border, it can be applied via the CSS property "border" or "border-color".

```
.border, #border, table{ border:4px solid rgb(65, 41, 38) }
```


If only the border color should be changed use the property border-color.

```
.border{ border-color:rgb(65, 41, 38) }
```

If you want to add a box shadow in that color use:

Here you see how a box with a 4 pixel rgb(65, 41, 38) colored shadow looks like.

```
.boxshadow{ -moz-box-shadow:4px 4px 4px  
4px rgb(65, 41, 38); -webkit-box-  
shadow:4px 4px 4px 4px rgb(65, 41, 38);  
box-shadow:4px 4px 4px 4px rgb(65, 41, 38)  
}
```

Background

The CSS property to change the background color of an element to HunterLab 16.8809, 5.5937, 4.0593 is called "background". The background property can be set on classes, ids or directly on the HTML element.

```
.background, #background, body{  
background: rgb(65, 41, 38) }
```

If only the background color should be changed can be used:

```
.background{ background-color: rgb(65, 41,  
38) }
```

This example shows the color as background, it is applied via the CSS property "background".

To optimize and compress your CSS code, you can use our [online CSS compressor and optimizer](#) based on csstidy. If you want to create a linear or radial gradient as background or border, check our [CSS Gradient Generator](#).

Hey! You found this booklet interesting? Support Converting Colors with the new Membership Option!

The pro membership hides all ads, plus gives you double the colors in the color bucket, and more awesome pro features!

[Learn more, Memberships starting at \\$2.50/m!](#)

**Follow me
on Twitter!**

@ConvertingColor