

Converting Colors

HunterLab(16.8379, 2.8195,
5.9167)

Have a look what the booklet for
HunterLab(16.8379, 2.8195, 5.9167)
contains.

HunterLab(16.7892, 2.8935, 5.8182)	3
<i>Conversions</i>	4
<i>Details</i>	6
<i>Harmonies</i>	12
<i>Previews</i>	24
<i>Color Blindness Simulation</i>	28
<i>CSS Examples</i>	31

Color

**HunterLab(16.7892, 2.8935,
5.8182)**

Conversions

Conversions Part 1

Format	Color
Hex	3D2B1F
RGB	61, 43, 31
RGB Percent	24%, 17%, 12%
CMY	0.7608, 0.8314, 0.8784
CMYK	0.00, 0.30, 0.49, 0.76
HSL	24°, 33%, 18%
HSV	24°, 49%, 24%
XYZ	3.0357, 2.8188, 1.6804
YIQ	47.0140, 14.5800, 0.0840

Conversions

Conversions Part 2

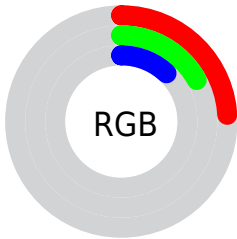
Format	Color
R_{YB}	61, 51, 31
Decimal	4008735
CIE Lab	19.30, 6.47, 11.07
CIE LCh	19, 12.824, 59.706
Yxy	2.8189, 0.4029, 0.3741
Android (android.graphics.Color)	4282198815 (0xFF3D2B1F)
YUV	47.0140, -7.8949, 12.2657
Hunter-Lab	16.7892, 2.8935, 5.8182

Details

The HunterLab color **16.7892, 2.8935, 5.8182** is a dark color, and the websafe version is hex **333333**, and the color name is [bistre](#). A complement of this color would be **16.8070, -2.8008, -5.2670**, and the grayscale version is **16.8869, -0.9010, 0.9175**.

A 20% lighter version of the original color is **32.8671, 3.2559, 8.3015**, and **2.4099, 4.1271, 1.5572** is the 20% darker color. If you saturate the color by 10%, you get **15.9231, 3.9226, 6.4768**, and if you desaturate by 10%, it is **17.6985, 1.9370, 5.0485**.

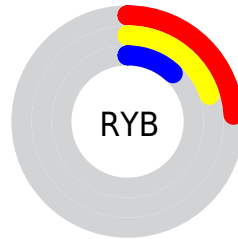
Distribution



Red (24%)

Green (17%)

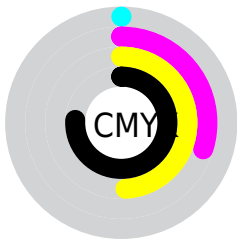
Blue (12%)



Red (24%)

Yellow (20%)

Blue (12%)

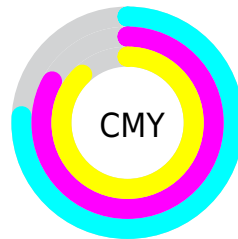


Cyan (0%)

Magenta (30%)

Yellow (49%)

Black (76%)



Cyan (76%)

Magenta (83%)

Yellow (88%)

Brightness & Saturation Gradients

These gradients show how the HunterLab color 16.7892, 2.8935, 5.8182 changes by changing the brightness by 10 percent. The first figure shows a shift by +10% for each color and the second figure -10%.

Similar to the brightness gradients but the following saturation gradients show a change of the HunterLab color 16.7892, 2.8935, 5.8182 by changing the saturation by 10% instead.

■ 16.7892, 2.8935,
5.8182

■ 16.7892, 2.8935,
5.8182

■ 112.2685, 0.9302,
16.6940

■ 10.1879, 2.7175,
5.1104

■ 32.9187, 2.9132,
8.3691

0.0000, INF, NaN

0.0000, NaN, NaN

■ 42.2394, 2.7993,
9.5792

0.0000, NaN, NaN

■ 52.3041, 2.6186,
10.7706

0.0000, NaN, NaN

0.0000, NaN, NaN

■ 63.0614, 2.3789,
11.9528

0.0000, NaN, NaN

■ 74.4692, 2.0860,
13.1325

0.0000, NaN, NaN

■ 86.4923, 1.7445,

0.0000, NaN, NaN

14.3139

■ 99.1008, 1.3582,
15.5004

■ 16.7892, 2.8935,
5.8182

■ 16.7892, 2.8935,
5.8182

■ 15.9231, 3.9226,
6.4768

■ 17.6985, 1.9370,
5.0485

■ 15.1031, 5.0264,
7.0108

■ 18.6460, 1.0530,
4.1792

■ 14.3340, 6.2011,
7.4077

■ 19.6289, 0.2372,
3.2217

■ 13.6176, 7.4258,
7.6959

■ 20.6441, -0.5147,
2.1860

■ 12.9454, 8.6254,
8.0621

■ 21.6888, -1.2074,
1.0805

■ 12.8923, 8.7220,
8.0968

■ 22.7609, -1.8454,
-0.0870

■ 23.8580, -2.4334,
-1.3102

■ 24.9785, -2.9756,
-2.5834

■ 26.1206, -3.4761,
-3.9018

Harmonies

Analogous

The Analogous color harmony consists of three colors that are next to each other on the color wheel.



16.7896, 5.8277, 3.9667



16.7892, 2.8935, 5.8182



16.7896, -0.8598, 6.4227

Triad

The Triadic color harmony groups three colors that are evenly spaced from another and form a triangle on the color wheel.



16.7896, 2.8928, 5.8184



16.7896, -7.5086, 0.9490



16.7896, 2.8232, -6.1921

Complementary

The Complementary color scheme is a pair of colors which are on the opposite of each other on the color wheel.



16.7892, 2.8935, 5.8182



16.8070, -2.8008, -5.2670

Split Complementary

Split-complementary colors differ from the complementary color scheme. The scheme consists of three colors, the original color and two neighbors of the complement color.



16.7896, -0.9337, -7.4817



16.7892, 2.8935, 5.8182



16.7896, -6.7054, -2.8478

Square

The Square scheme is like the rectangle color scheme, but the four colors are evenly spaced on the color wheel.



16.7896, 2.8928, 5.8184



16.7896, -6.6736, 4.0155



16.7896, -4.3774, -6.1429



16.7896, 5.7851, -2.9223

Rectangle

The Rectangle color scheme consists of four colors that form a rectangle on the color wheel.



16.7892, 2.8935, 5.8182



16.7896, -3.2568, 6.1689



16.7896, -4.3774, -6.1429



16.7896, 1.6013, -6.8997

Sweetspot

The Sweet Spot groups the original color and five complimentary colors.



16.7896, 2.8928, 5.8184



25.8814, -0.0438, 3.7129



14.8116, 9.8581, -2.3320



13.6581, 0.0190, 2.0240



62.6995, -3.3455, 3.4066



14.8260, -0.7911, 0.8055

Same Dimension

The Same Dimension uses a secret algorithm to generate beautiful new colors.



16.7896, 2.8928, 5.8184



20.3583, 5.4224, 8.5742



20.2907, -3.0927, 8.6609



11.1086, -0.3047, 1.1289



19.4118, 15.1057, 12.2259



47.5493, 43.0356, 30.0531

Inverse Universe

The Inverse Universe completely reimagines the original color for something new.



16.8070, -2.8008, -5.2670



20.3761, -3.6126, -9.0594



13.3128, 3.2430, -11.4019



11.1110, -0.8549, 0.0607



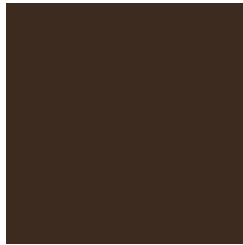
19.2401, -1.3863, -21.0559



46.9765, -0.2641, -58.1465

Previews

White Background



This preview shows how the HunterLab color 16.7892, 2.8935, 5.8182 looks on a white background.

Color Contrast Check

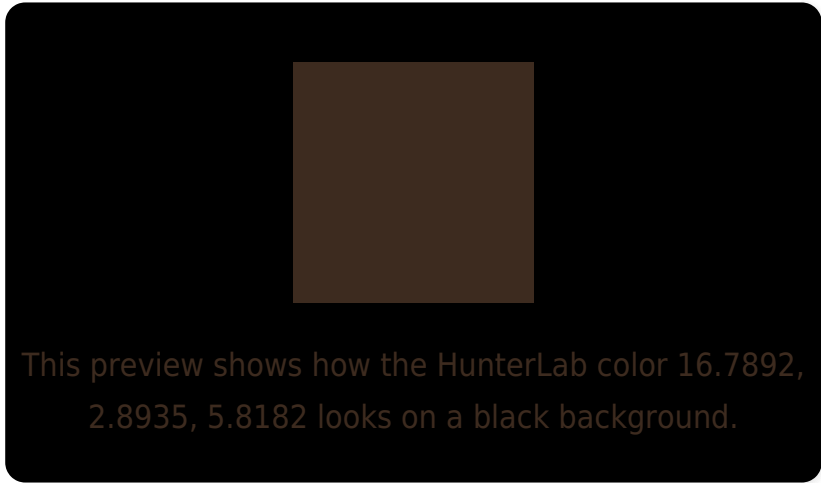
Large Text (above 18pt) WCAG AA ✓ Pass

Any Text WCAG AA ✓ Pass

Large Text (above 18pt) WCAG AAA ✓ Pass

Any Text WCAG AAA ✓ Pass

Black Background



Color Contrast Check

Large Text (above 18pt) WCAG AA × Fail

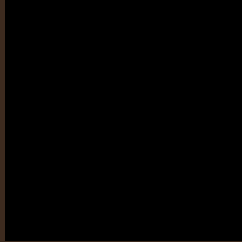
Any Text WCAG AA × Fail

Large Text (above 18pt) WCAG AAA × Fail

Any Text WCAG AAA × Fail

If you want to check with other color combinations, try the [Color Contrast Checker](#).

HunterLab 16.7892, 2.8935, 5.8182 Background



This preview shows how black text looks on a background with the HunterLab color 16.7892, 2.8935, 5.8182.

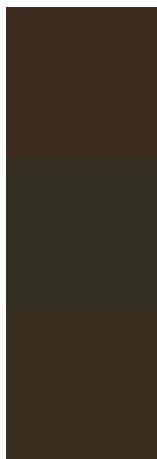


This preview shows how white text looks on a background with the HunterLab color 16.7892, 2.8935,

Color Blindness Simulation

Color vision deficiency is a very complex topic, and I could not describe the different causes any better than Wikipedia does, so if you want to learn more, you should check out their [article about color blindness](#).

Dichromacy



Original Color

16.7892, 2.8935, 5.8182

Protanopia

16.8720, -1.4236, 5.3153

Deuteranopia

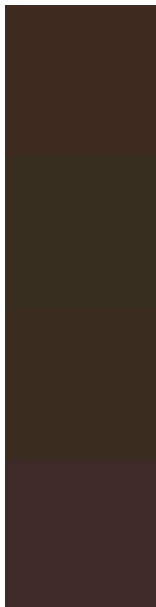
16.8688, 0.8813, 5.8536



Tritanopia

16.7089, 5.3100, 1.9335

Trichromacy



Original Color

16.7892, 2.8935, 5.8182

Protanomaly

16.9425, -0.0101, 5.6577

Deuteranomaly

16.7327, 1.5787, 5.7449

Tritanomaly

16.8123, 4.3494, 3.6667

Monochromacy



Original Color

16.7892, 2.8935, 5.8182

Achromatopsia

16.8600, -0.8996, 0.9160

Achromatomaly

16.8646, 0.0532, 3.0176

CSS Examples

Text

The CSS property to change the color of the text to HunterLab 16.7892, 2.8935, 5.8182 is called "color". The color property can be set on classes, ids or directly on the HTML element.

This example shows how text in the color `rgb(61, 43, 31)` looks like.

```
.text, #text, p{  
    color:rgb(61, 43, 31)  
}
```

If you want to add a text shadow in that color use the text-shadow property, you can generate a text shadow directly with our [CSS Text Shadow Generator](#).

Here you see how black text with a 4 pixel rgb(61, 43, 31) colored shadow looks like.

```
.shadow{ text-shadow: 4px 4px 2px rgb(61, 43, 31) }
```

Border

The CSS property to change the border of an element to HunterLab 16.7892, 2.8935, 5.8182 is called "border". The border property can be set on classes, ids or directly on the HTML element.

This example shows the color as border, it can be applied via the CSS property "border" or "border-color".

```
.border, #border, table{ border:4px solid rgb(61, 43, 31) }
```


If only the border color should be changed use the property border-color.

```
.border{ border-color:rgb(61, 43, 31) }
```

If you want to add a box shadow in that color use:

Here you see how a box with a 4 pixel rgb(61, 43, 31) colored shadow looks like.

```
.boxshadow{ -moz-box-shadow:4px 4px 4px  
4px rgb(61, 43, 31); -webkit-box-  
shadow:4px 4px 4px 4px rgb(61, 43, 31);  
box-shadow:4px 4px 4px 4px rgb(61, 43, 31)  
}
```

Background

The CSS property to change the background color of an element to HunterLab 16.7892, 2.8935, 5.8182 is called "background". The background property can be set on classes, ids or directly on the HTML element.

```
.background, #background, body{  
background: rgb(61, 43, 31) }
```

If only the background color should be changed can be used:

```
.background{ background-color: rgb(61, 43,  
31) }
```

This example shows the color as background, it is applied via the CSS property "background".

To optimize and compress your CSS code, you can use our [online CSS compressor and optimizer](#) based on csstidy. If you want to create a linear or radial gradient as background or border, check our [CSS Gradient Generator](#).

Hey! You found this booklet interesting? Support Converting Colors with the new Membership Option!

The pro membership hides all ads, plus gives you double the colors in the color bucket, and more awesome pro features!

[Learn more, Memberships starting at \\$2.50/m!](#)

**Follow me
on Twitter!**

@ConvertingColor