

Converting Colors

HunterLab(16.9291, 8.2510,
3.1870)

Have a look what the booklet for
HunterLab(16.9291, 8.2510, 3.1870)
contains.

HunterLab(16.9598, 7.9995, 3.2568)	3
<i>Conversions</i>	4
<i>Details</i>	6
<i>Harmonies</i>	12
<i>Previews</i>	24
<i>Color Blindness Simulation</i>	28
<i>CSS Examples</i>	31

Color

**HunterLab(16.9598, 7.9995,
3.2568)**

Conversions

Conversions Part 1

Format	Color
Hex	452729
RGB	69, 39, 41
RGB Percent	27%, 15%, 16%
CMY	0.7294, 0.8471, 0.8392
CMYK	0.00, 0.43, 0.41, 0.73
HSL	356°, 28%, 21%
HSV	356°, 43%, 27%
XYZ	3.5800, 2.8763, 2.4643
YIQ	48.1980, 17.2380, 6.9820

Conversions

Conversions Part 2

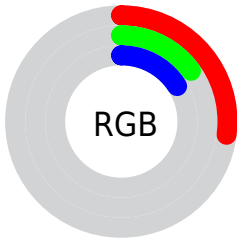
Format	Color
R_{YB}	69, 39, 41
Decimal	4532009
CIE _{Lab}	19.54, 14.41, 4.71
CIE _{LCh}	20, 15.155, 18.092
Yxy	2.8765, 0.4013, 0.3224
Android (android.graphics.Color)	4282722089 (0xFF452729)
YUV	48.1980, -3.5486, 18.2434
Hunter-Lab	16.9598, 7.9995, 3.2568

Details

The HunterLab color **16.9598, 7.9995, 3.2568** is a dark color, and the websafe version is hex **663333**. A complement of this color would be **22.5674, -8.0279, -0.1865**, and the grayscale version is **17.2657, -0.9213, 0.9381**.

A 20% lighter version of the original color is **33.0673, 9.3803, 4.7543**, and **4.5702, 7.8745, 2.5814** is the 20% darker color. If you saturate the color by 10%, you get **15.5644, 10.2688, 3.8429**, and if you desaturate by 10%, it is **18.4943, 5.7537, 2.7250**.

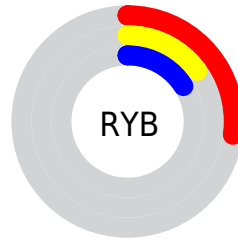
Distribution



Red (27%)

Green (15%)

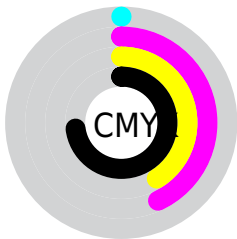
Blue (16%)



Red (27%)

Yellow (15%)

Blue (16%)

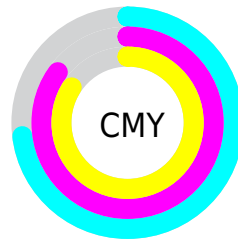


Cyan (0%)

Magenta (43%)

Yellow (41%)

Black (73%)



Cyan (73%)

Magenta (85%)

Yellow (84%)

Brightness & Saturation Gradients

These gradients show how the HunterLab color 16.9598, 7.9995, 3.2568 changes by changing the brightness by 10 percent. The first figure shows a shift by +10% for each color and the second figure -10%.

Similar to the brightness gradients but the following saturation gradients show a change of the HunterLab color 16.9598, 7.9995, 3.2568 by changing the saturation by 10% instead.

■ 16.9598, 7.9995,
3.2568

■ 16.9598, 7.9995,
3.2568

■ 112.5896, 9.6520,
10.7674

■ 10.3324, 7.2691,
2.5205

■ 33.1321, 9.0005,
4.8046

0.0000, INF, NaN

0.0000, NaN, NaN

■ 42.4713, 9.3262,
5.5969

0.0000, NaN, NaN

■ 52.5531, 9.5584,
6.4071

0.0000, NaN, NaN

0.0000, NaN, NaN

■ 63.3263, 9.7091,
7.2371

0.0000, NaN, NaN

■ 74.7492, 9.7873,
8.0879

0.0000, NaN, NaN

■ 86.7866, 9.8001,

0.0000, NaN, NaN

8.9597

99.4087, 9.7534,
9.8529

16.9598, 7.9995,
3.2568

16.9598, 7.9995,
3.2568

15.5644, 10.2688,
3.8429

18.4943, 5.7537,
2.7250

14.3303, 12.5054,
4.4727

20.1461, 3.5650,
2.2482

13.2830, 14.6133,
5.1246

21.8986, 1.4448,
1.8237

12.4461, 16.4620,
5.7618

23.7377, -0.6051,
1.4465

11.7568, 18.1614,
6.2883

25.6521, -2.5887,
1.1110

■ 11.2928, 19.4285,
6.6058

■ 27.6325, -4.5126,
0.8118

■ 29.6713, -6.3842,
0.5439

■ 31.7624, -8.2107,
0.3029

■ 33.9007, -9.9989,
0.0852

Harmonies

Analogous

The Analogous color harmony consists of three colors that are next to each other on the color wheel.



16.9602, 8.2848, -0.8399



16.9598, 7.9995, 3.2568



16.9602, 5.1831, 5.9243

Triad

The Triadic color harmony groups three colors that are evenly spaced from another and form a triangle on the color wheel.



16.9602, 7.9986, 3.2571



16.9602, -6.8047, 5.5021



16.9602, -2.6322, -9.1040

Complementary

The Complementary color scheme is a pair of colors which are on the opposite of each other on the color wheel.



16.9598, 7.9995, 3.2568



22.5674, -8.0279, -0.1865

Split Complementary

Split-complementary colors differ from the complementary color scheme. The scheme consists of three colors, the original color and two neighbors of the complement color.



16.9602, -6.2411, -6.3034



16.9598, 7.9995, 3.2568



16.9602, -8.4789, 2.5153

Square

The Square scheme is like the rectangle color scheme, but the four colors are evenly spaced on the color wheel.



16.9602, 7.9986, 3.2571



16.9602, -3.4772, 6.9719



16.9602, -8.2838, -1.7982



16.9602, 1.8284, -8.7561

Rectangle

The Rectangle color scheme consists of four colors that form a rectangle on the color wheel.



16.9598, 7.9995, 3.2568



16.9602, 2.3994, 6.8629



16.9602, -8.2838, -1.7982



16.9602, -3.9759, -8.4752

Sweetspot

The Sweet Spot groups the original color and five complimentary colors.



16.9602, 7.9986, 3.2571



28.4450, 1.8890, 2.3719



17.5333, 11.2053, -8.0390



14.6539, 1.1566, 1.2678



64.8100, -3.4581, 3.5212



16.4960, -0.8802, 0.8963

Same Dimension

The Same Dimension uses a secret algorithm to generate beautiful new colors.



16.9602, 7.9986, 3.2571



20.1224, 13.5191, 5.0409



19.6667, 2.3287, 6.3721



12.3127, 0.2404, 0.8842



16.4091, 28.1895, 9.9174



40.4445, 69.3486, 25.4668

Inverse Universe

The Inverse Universe completely reimagines the original color for something new.



16.9602, 7.9986, 3.2571



20.1224, 13.5191, 5.0409



19.2080, -2.7132, -5.5906



12.3127, 0.2404, 0.8842



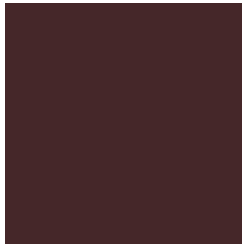
16.4091, 28.1895, 9.9174



40.4445, 69.3486, 25.4668

Previews

White Background



This preview shows how the HunterLab color 16.9598, 7.9995, 3.2568 looks on a white background.

Color Contrast Check

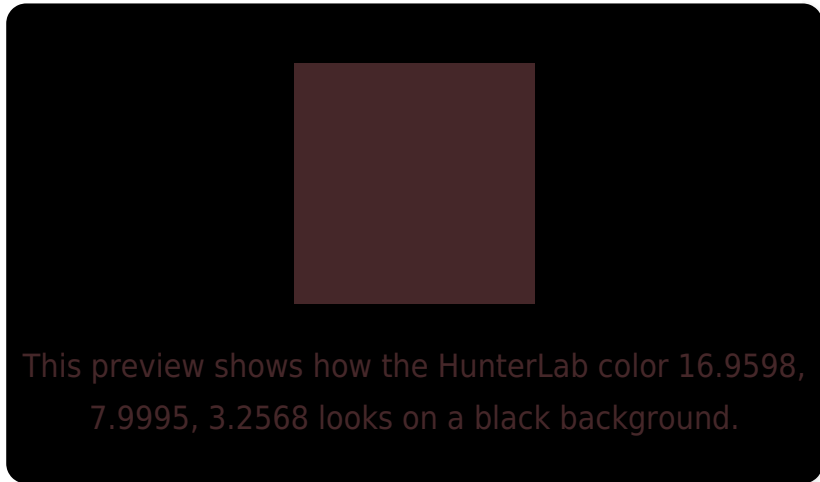
Large Text (above 18pt) WCAG AA ✓ Pass

Any Text WCAG AA ✓ Pass

Large Text (above 18pt) WCAG AAA ✓ Pass

Any Text WCAG AAA ✓ Pass

Black Background



Color Contrast Check

Large Text (above 18pt) WCAG AA × Fail

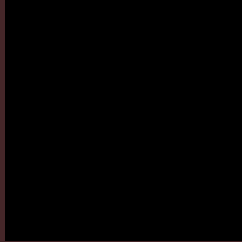
Any Text WCAG AA × Fail

Large Text (above 18pt) WCAG AAA × Fail

Any Text WCAG AAA × Fail

If you want to check with other color combinations, try the [Color Contrast Checker](#).

HunterLab 16.9598, 7.9995, 3.2568 Background



This preview shows how black text looks on a background with the HunterLab color 16.9598, 7.9995, 3.2568.

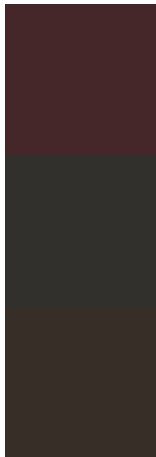


This preview shows how white text looks on a background with the HunterLab color 16.9598, 7.9995,

Color Blindness Simulation

Color vision deficiency is a very complex topic, and I could not describe the different causes any better than Wikipedia does, so if you want to learn more, you should check out their [article about color blindness](#).

Dichromacy



Original Color

16.9598, 7.9995, 3.2568

Protanopia

17.1940, -1.0500, 2.0157

Deuteranopia

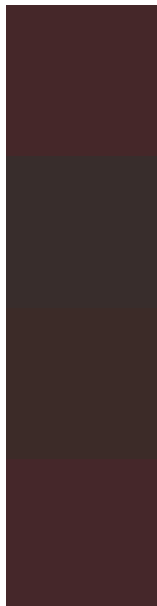
17.0863, 0.7665, 3.5759



Tritanopia

16.9806, 8.1027, 2.9569

Trichromacy



Original Color

16.9598, 7.9995, 3.2568

Protanomaly

17.0275, 1.9013, 2.2284

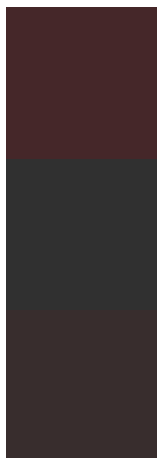
Deuteranomaly

16.8571, 3.4357, 3.3867

Tritanomaly

16.9806, 8.1027, 2.9569

Monochromacy



Original Color

16.9598, 7.9995, 3.2568

Achromatopsia

17.1921, -0.9173, 0.9341

Achromatomaly

17.0499, 2.0199, 1.9082

CSS Examples

Text

The CSS property to change the color of the text to HunterLab 16.9598, 7.9995, 3.2568 is called "color". The color property can be set on classes, ids or directly on the HTML element.

This example shows how text in the color `rgb(69, 39, 41)` looks like.

```
.text, #text, p{  
    color:rgb(69, 39, 41)  
}
```

If you want to add a text shadow in that color use the text-shadow property, you can generate a text shadow directly with our [CSS Text Shadow Generator](#).

Here you see how black text with a 4 pixel rgb(69, 39, 41) colored shadow looks like.

```
.shadow{ text-shadow: 4px 4px 2px rgb(69, 39, 41) }
```

Border

The CSS property to change the border of an element to HunterLab 16.9598, 7.9995, 3.2568 is called "border".

The border property can be set on classes, ids or directly on the HTML element.

This example shows the color as border, it can be applied via the CSS property "border" or "border-color".

```
.border, #border, table{ border:4px solid rgb(69, 39, 41) }
```


If only the border color should be changed use the property `border-color`.

```
.border{ border-color:rgb(69, 39, 41) }
```

If you want to add a box shadow in that color use:

Here you see how a box with a 4 pixel `rgb(69, 39, 41)` colored shadow looks like.

```
.boxshadow{ -moz-box-shadow:4px 4px 4px  
4px rgb(69, 39, 41); -webkit-box-  
shadow:4px 4px 4px 4px rgb(69, 39, 41);  
box-shadow:4px 4px 4px 4px rgb(69, 39, 41)  
}
```

Background

The CSS property to change the background color of an element to HunterLab 16.9598, 7.9995, 3.2568 is called "background". The background property can be set on classes, ids or directly on the HTML element.

```
.background, #background, body{  
background: rgb(69, 39, 41) }
```

If only the background color should be changed can be used:

```
.background{ background-color: rgb(69, 39,  
41) }
```

This example shows the color as background, it is applied via the CSS property "background".

To optimize and compress your CSS code, you can use our [online CSS compressor and optimizer](#) based on csstidy. If you want to create a linear or radial gradient as background or border, check our [CSS Gradient Generator](#).

Hey! You found this booklet interesting? Support Converting Colors with the new Membership Option!

The pro membership hides all ads, plus gives you double the colors in the color bucket, and more awesome pro features!

[Learn more, Memberships starting at \\$2.50/m!](#)

**Follow me
on Twitter!**

@ConvertingColor