

Converting Colors

HunterLab(16.9512, 6.4910,
0.4878)

Have a look what the booklet for
HunterLab(16.9512, 6.4910, 0.4878)
contains.

HunterLab(17.0224, 6.5105, 0.4823)	3
<i>Conversions</i>	4
<i>Details</i>	6
<i>Harmonies</i>	12
<i>Previews</i>	24
<i>Color Blindness Simulation</i>	28
<i>CSS Examples</i>	31

Color

**HunterLab(17.0224, 6.5105,
0.4823)**

Conversions

Conversions Part 1

Format	Color
Hex	402931
RGB	64, 41, 49
RGB Percent	25%, 16%, 19%
CMY	0.7490, 0.8392, 0.8078
CMYK	0.00, 0.36, 0.23, 0.75
HSL	339°, 22%, 21%
HSV	339°, 36%, 25%
XYZ	3.4617, 2.8976, 3.2826
YIQ	48.7890, 11.1400, 7.3640

Conversions

Conversions Part 2

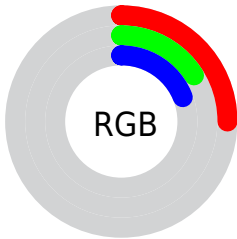
Format	Color
R_{YB}	64, 41, 49
Decimal	4204849
CIE Lab	19.63, 12.16, -0.82
CIE LCh	20, 12.189, 356.160
Yxy	2.8978, 0.3590, 0.3005
Android (android.graphics.Color)	4282394929 (0xFF402931)
YUV	48.7890, 0.1040, 13.3400
Hunter-Lab	17.0224, 6.5105, 0.4823

Details

The HunterLab color **17.0224, 6.5105, 0.4823** is a dark color, and the websafe version is hex **333333**. A complement of this color would be **21.0329, -7.4283, 2.2830**, and the grayscale version is **17.4523, -0.9312, 0.9482**.

A 20% lighter version of the original color is **33.0553, 7.3610, 1.0784**, and **4.2936, 7.4040, 2.3788** is the 20% darker color. If you saturate the color by 10%, you get **15.6745, 8.7157, 0.4867**, and if you desaturate by 10%, it is **18.4769, 4.3147, 0.5853**.

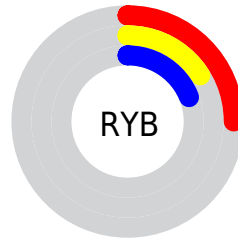
Distribution



Red (25%)

Green (16%)

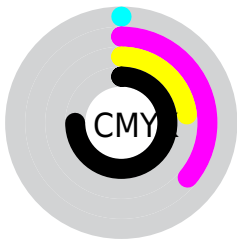
Blue (19%)



Red (25%)

Yellow (16%)

Blue (19%)

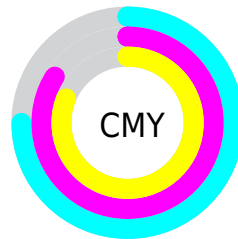


Cyan (0%)

Magenta (36%)

Yellow (23%)

Black (75%)



Cyan (75%)

Magenta (84%)

Yellow (81%)

Brightness & Saturation Gradients

These gradients show how the HunterLab color 17.0224, 6.5105, 0.4823 changes by changing the brightness by 10 percent. The first figure shows a shift by +10% for each color and the second figure -10%.

Similar to the brightness gradients but the following saturation gradients show a change of the HunterLab color 17.0224, 6.5105, 0.4823 by changing the saturation by 10% instead.

■ 17.0224, 6.5105,
0.4823

■ 17.0224, 6.5105,
0.4823

■ 112.7071, 7.1556,
5.3092

■ 10.3855, 5.9288,
0.1868

■ 33.2103, 7.2418,
1.2556

0.0000, INF, -NF

0.0000, NaN, NaN

■ 42.5563, 7.4453,
1.7175

0.0000, NaN, NaN

■ 52.6443, 7.5623,
2.2233

0.0000, NaN, NaN

0.0000, NaN, NaN

■ 63.4234, 7.6037,
2.7694

0.0000, NaN, NaN

■ 74.8518, 7.5778,
3.3531

0.0000, NaN, NaN

■ 86.8944, 7.4912,

0.0000, NaN, NaN

3.9722

99.5215, 7.3490,
4.6247

17.0224, 6.5105,
0.4823

17.0224, 6.5105,
0.4823

15.6745, 8.7157,
0.4867

18.4769, 4.3147,
0.5853

14.4492, 10.8930,
0.6162

20.0221, 2.1517,
0.7770

13.3663, 12.9770,
0.8890

21.6460, 0.0302,
1.0428

12.4461, 14.8740,
1.3165

23.3386, -2.0476,
1.3700

11.7041, 16.4744,
1.8940

25.0917, -4.0834,
1.7485

■ 11.0102, 18.1341,
2.4616

■ 26.8983, -6.0806,
2.1701

■ 10.7188, 18.9060,
2.6646

■ 28.7528, -8.0439,
2.6284

■ 30.6505, -9.9776,
3.1180

■ 32.5876, -11.8863,
3.6348

Harmonies

Analogous

The Analogous color harmony consists of three colors that are next to each other on the color wheel.



17.0228, 5.1874, -3.1337



17.0224, 6.5105, 0.4823



17.0228, 5.7133, 3.5657

Triad

The Triadic color harmony groups three colors that are evenly spaced from another and form a triangle on the color wheel.



17.0228, 6.5098, 0.4826



17.0228, -3.8362, 5.8145



17.0228, -4.5719, -5.4516

Complementary

The Complementary color scheme is a pair of colors which are on the opposite of each other on the color wheel.



17.0224, 6.5105, 0.4823



21.0329, -7.4283, 2.2830

Split Complementary

Split-complementary colors differ from the complementary color scheme. The scheme consists of three colors, the original color and two neighbors of the complement color.



17.0228, -6.6523, -2.2171



17.0224, 6.5105, 0.4823



17.0228, -6.2527, 4.1818

Square

The Square scheme is like the rectangle color scheme, but the four colors are evenly spaced on the color wheel.



17.0228, 6.5098, 0.4826



17.0228, -0.4462, 6.2467



17.0228, -7.2415, 1.3589



17.0228, -1.3673, -6.9779

Rectangle

The Rectangle color scheme consists of four colors that form a rectangle on the color wheel.



17.0224, 6.5105, 0.4823



17.0228, 4.1206, 5.0019



17.0228, -7.2415, 1.3589



17.0228, -5.4153, -4.4993

Sweetspot

The Sweet Spot groups the original color and five complimentary colors.



17.0228, 6.5098, 0.4826



27.3151, 1.5867, 1.1681



16.7198, 6.4682, -6.7845



14.2836, 0.9034, 0.6045



63.7533, -3.4017, 3.4638



15.6573, -0.8354, 0.8507

Same Dimension

The Same Dimension uses a secret algorithm to generate beautiful new colors.



17.0228, 6.5098, 0.4826



20.8205, 11.1919, 0.6336



17.5650, 4.1404, 3.8143



11.5970, 0.3195, 0.5284



16.2778, 28.5751, 5.1005



40.5733, 70.8402, 15.6970

Inverse Universe

The Inverse Universe completely reimagines the original color for something new.



17.0228, 6.5098, 0.4826



20.8205, 11.1919, 0.6336



20.3256, -4.9664, -1.7114



11.5970, 0.3195, 0.5284



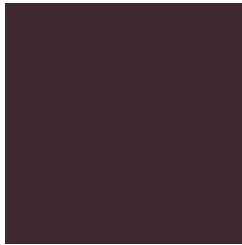
16.2778, 28.5751, 5.1005



40.5733, 70.8402, 15.6970

Previews

White Background



This preview shows how the HunterLab color 17.0224, 6.5105, 0.4823 looks on a white background.

Color Contrast Check

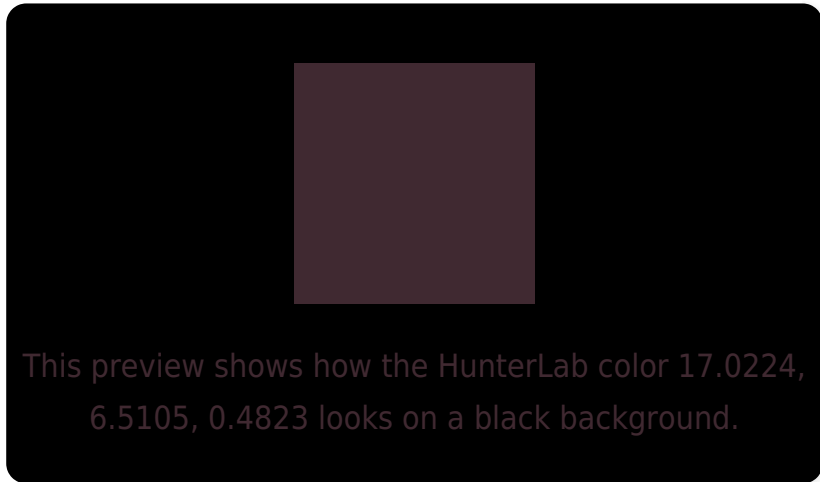
Large Text (above 18pt) WCAG AA ✓ Pass

Any Text WCAG AA ✓ Pass

Large Text (above 18pt) WCAG AAA ✓ Pass

Any Text WCAG AAA ✓ Pass

Black Background



Color Contrast Check

Large Text (above 18pt) WCAG AA × Fail

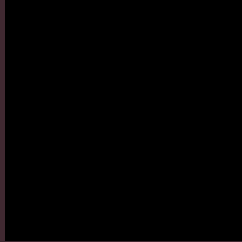
Any Text WCAG AA × Fail

Large Text (above 18pt) WCAG AAA × Fail

Any Text WCAG AAA × Fail

If you want to check with other color combinations, try the [Color Contrast Checker](#).

HunterLab 17.0224, 6.5105, 0.4823 Background



This preview shows how black text looks on a background with the HunterLab color 17.0224, 6.5105, 0.4823.



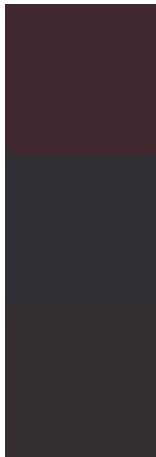
This preview shows how white text looks on a background with the HunterLab color 17.0224, 6.5105,

0.4823.

Color Blindness Simulation

Color vision deficiency is a very complex topic, and I could not describe the different causes any better than Wikipedia does, so if you want to learn more, you should check out their [article about color blindness](#).

Dichromacy



Original Color

17.0224, 6.5105, 0.4823

Protanopia

17.0130, -0.0655, -1.2558

Deuteranopia

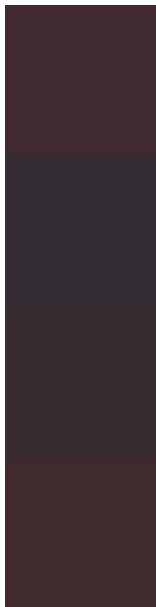
17.0219, 0.9021, 0.7646



Tritanopia

17.1329, 5.6067, 2.0641

Trichromacy



Original Color

17.0224, 6.5105, 0.4823

Protanomaly

16.9752, 2.1170, -0.8501

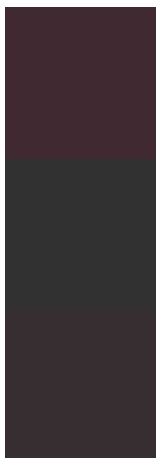
Deuteranomaly

16.8983, 2.8050, 0.6505

Tritanomaly

17.1557, 5.7225, 1.7385

Monochromacy



Original Color

17.0224, 6.5105, 0.4823

Achromatopsia

17.5253, -0.9351, 0.9522

Achromatomaly

17.2047, 1.5638, 0.6152

CSS Examples

Text

The CSS property to change the color of the text to HunterLab 17.0224, 6.5105, 0.4823 is called "color". The color property can be set on classes, ids or directly on the HTML element.

This example shows how text in the color `rgb(64, 41, 49)` looks like.

```
.text, #text, p{  
    color:rgb(64, 41, 49)  
}
```

If you want to add a text shadow in that color use the text-shadow property, you can generate a text shadow directly with our [CSS Text Shadow Generator](#).

Here you see how black text with a 4 pixel rgb(64, 41, 49) colored shadow looks like.

```
.shadow{ text-shadow: 4px 4px 2px rgb(64, 41, 49) }
```

Border

The CSS property to change the border of an element to HunterLab 17.0224, 6.5105, 0.4823 is called "border".

The border property can be set on classes, ids or directly on the HTML element.

This example shows the color as border, it can be applied via the CSS property "border" or "border-color".

```
.border, #border, table{ border:4px solid rgb(64, 41, 49) }
```


If only the border color should be changed use the property border-color.

```
.border{ border-color:rgb(64, 41, 49) }
```

If you want to add a box shadow in that color use:

Here you see how a box with a 4 pixel rgb(64, 41, 49) colored shadow looks like.

```
.boxshadow{ -moz-box-shadow:4px 4px 4px  
4px rgb(64, 41, 49); -webkit-box-  
shadow:4px 4px 4px 4px rgb(64, 41, 49);  
box-shadow:4px 4px 4px 4px rgb(64, 41, 49)  
}
```

Background

The CSS property to change the background color of an element to HunterLab 17.0224, 6.5105, 0.4823 is called "background". The background property can be set on classes, ids or directly on the HTML element.

```
.background, #background, body{  
background: rgb(64, 41, 49) }
```

If only the background color should be changed can be used:

```
.background{ background-color: rgb(64, 41,  
49) }
```

This example shows the color as background, it is applied via the CSS property "background".

To optimize and compress your CSS code, you can use our [online CSS compressor and optimizer](#) based on csstidy. If you want to create a linear or radial gradient as background or border, check our [CSS Gradient Generator](#).

Hey! You found this booklet interesting? Support Converting Colors with the new Membership Option!

The pro membership hides all ads, plus gives you double the colors in the color bucket, and more awesome pro features!

[Learn more, Memberships starting at \\$2.50/m!](#)

**Follow me
on Twitter!**

@ConvertingColor