

Converting Colors

HunterLab(16.9591, 5.7053,
2.9206)

Have a look what the booklet for
HunterLab(16.9591, 5.7053, 2.9206)
contains.

HunterLab(16.8613, 5.6946, 2.7871)	3
<i>Conversions</i>	4
<i>Details</i>	6
<i>Harmonies</i>	12
<i>Previews</i>	24
<i>Color Blindness Simulation</i>	28
<i>CSS Examples</i>	31

Color

**HunterLab(16.8613, 5.6946,
2.7871)**

Conversions

Conversions Part 1

Format	Color
Hex	40292A
RGB	64, 41, 42
RGB Percent	25%, 16%, 16%
CMY	0.7490, 0.8392, 0.8353
CMYK	0.00, 0.36, 0.34, 0.75
HSL	357°, 22%, 21%
HSV	357°, 36%, 25%
XYZ	3.3252, 2.8430, 2.5640
YIQ	47.9910, 13.3870, 5.1870

Conversions

Conversions Part 2

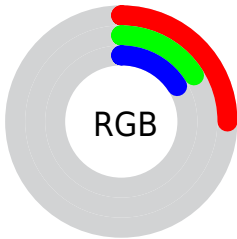
Format	Color
RYB	64, 41, 42
Decimal	4204842
CIELab	19.40, 10.93, 3.72
CIELCh	19, 11.540, 18.786
Yxy	2.8432, 0.3808, 0.3256
Android (android.graphics.Color)	4282394922 (0xFF40292A)
YUV	47.9910, -2.9536, 14.0399
Hunter-Lab	16.8613, 5.6946, 2.7871

Details

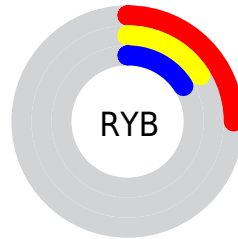
The HunterLab color **16.8613, 5.6946, 2.7871** is a dark color, and the websafe version is hex **333333**. A complement of this color would be **21.2065, -6.4290, -0.1937**, and the grayscale version is **17.1958, -0.9175, 0.9343**.

A 20% lighter version of the original color is **32.9460, 6.5913, 4.1898**, and **3.7208, 6.3721, 2.4043** is the 20% darker color. If you saturate the color by 10%, you get **15.4771, 7.7491, 3.3160**, and if you desaturate by 10%, it is **18.3568, 3.6892, 2.3014**.

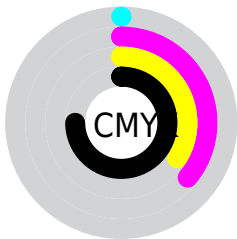
Distribution



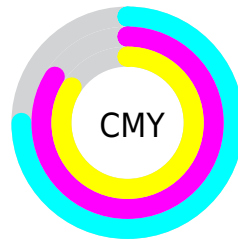
- Red (25%)
- Green (16%)
- Blue (16%)



- Red (25%)
- Yellow (16%)
- Blue (16%)



- Cyan (0%)
- Magenta (36%)
- Yellow (34%)
- Black (75%)



- Cyan (75%)
- Magenta (84%)
- Yellow (84%)

Brightness & Saturation Gradients

These gradients show how the HunterLab color 16.8613, 5.6946, 2.7871 changes by changing the brightness by 10 percent. The first figure shows a shift by +10% for each color and the second figure -10%.

Similar to the brightness gradients but the following saturation gradients show a change of the HunterLab color 16.8613, 5.6946, 2.7871 by changing the saturation by 10% instead.

■ 16.8613, 5.6946,
2.7871

■ 16.8613, 5.6946,
2.7871

■ 112.4043, 5.7951,
9.7963

■ 10.2490, 5.1937,
2.1193

■ 33.0089, 6.2800,
4.1884

0.0000, INF, NaN

0.0000, NaN, NaN

■ 42.3375, 6.4174,
4.9187

0.0000, NaN, NaN

■ 52.4094, 6.4721,
5.6721

0.0000, NaN, NaN

0.0000, NaN, NaN

■ 63.1734, 6.4545,
6.4493

0.0000, NaN, NaN

■ 74.5876, 6.3724,
7.2505

0.0000, NaN, NaN

■ 86.6168, 6.2320,

0.0000, NaN, NaN

8.0756

99.2310, 6.0382,
8.9243

16.8613, 5.6946,
2.7871

16.8613, 5.6946,
2.7871

15.4771, 7.7491,
3.3160

18.3568, 3.6892,
2.3014

14.2218, 9.8239,
3.8826

19.9464, 1.7484,
1.8577

13.1175, 11.8607,
4.4744

21.6172, -0.1260,
1.4533

12.1868, 13.7691,
5.0673

23.3587, -1.9372,
1.0841

11.4476, 15.4363,
5.6225

25.1619, -3.6912,
0.7460

■ 10.7611, 17.1870,
6.0985

■ 27.0199, -5.3946,
0.4349

■ 10.4694, 17.9873,
6.3143

■ 28.9268, -7.0543,
0.1472

■ 30.8776, -8.6767,
-0.1205

■ 32.8685, -10.2675,
-0.3707

Harmonies

Analogous

The Analogous color harmony consists of three colors that are next to each other on the color wheel.



16.8617, 5.9492, -0.3274



16.8613, 5.6946, 2.7871



16.8617, 3.5919, 4.9328

Triad

The Triadic color harmony groups three colors that are evenly spaced from another and form a triangle on the color wheel.



16.8617, 5.6939, 2.7874



16.8617, -5.5102, 4.4998



16.8617, -2.1442, -6.3303

Complementary

The Complementary color scheme is a pair of colors which are on the opposite of each other on the color wheel.



16.8613, 5.6946, 2.7871



21.2065, -6.4290, -0.1937

Split Complementary

Split-complementary colors differ from the complementary color scheme. The scheme consists of three colors, the original color and two neighbors of the complement color.



16.8617, -4.9671, -4.4181



16.8613, 5.6946, 2.7871



16.8617, -6.8060, 2.0748

Square

The Square scheme is like the rectangle color scheme, but the four colors are evenly spaced on the color wheel.



16.8617, 5.6939, 2.7874



16.8617, -2.9401, 5.7789



16.8617, -6.6153, -1.1938



16.8617, 1.2407, -6.0354

Rectangle

The Rectangle color scheme consists of four colors that form a rectangle on the color wheel.



16.8613, 5.6946, 2.7871



16.8617, 1.5126, 5.7184



16.8617, -6.6153, -1.1938



16.8617, -3.1853, -5.9113

Sweetspot

The Sweet Spot groups the original color and five complimentary colors.



16.8617, 5.6939, 2.7874



27.2425, 1.1964, 2.2047



17.3436, 8.3337, -5.7487



14.2440, 0.6903, 1.1707



63.7533, -3.4017, 3.4638



15.6573, -0.8354, 0.8507

Same Dimension

The Same Dimension uses a secret algorithm to generate beautiful new colors.



16.8617, 5.6939, 2.7874



20.5649, 9.9358, 4.2964



19.1012, 1.2788, 5.2803



11.5744, 0.1974, 0.8508



15.9534, 27.3785, 9.8608



39.9157, 68.4103, 25.3780

Inverse Universe

The Inverse Universe completely reimagines the original color for something new.



16.8617, 5.6939, 2.7874



20.5649, 9.9358, 4.2964



18.5677, -2.2789, -4.0871



11.5744, 0.1974, 0.8508



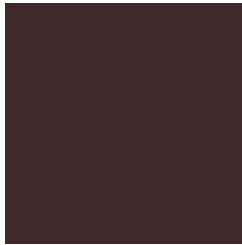
15.9534, 27.3785, 9.8608



39.9157, 68.4103, 25.3780

Previews

White Background



This preview shows how the HunterLab color 16.8613, 5.6946, 2.7871 looks on a white background.

Color Contrast Check

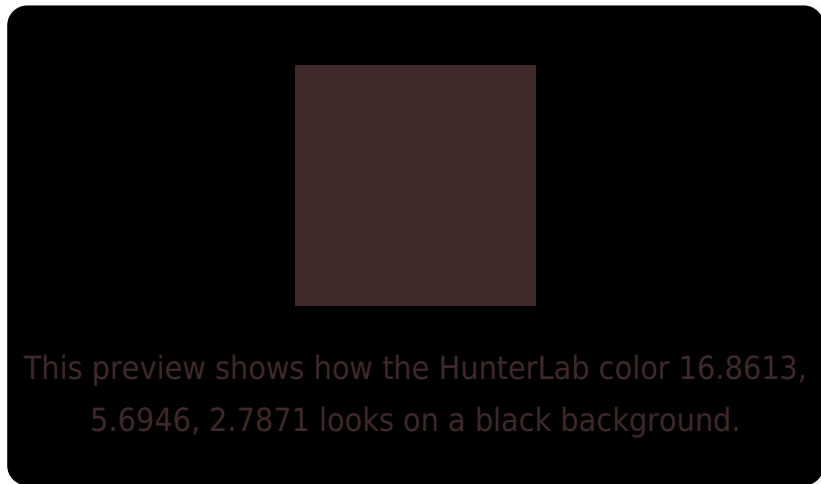
Large Text (above 18pt) WCAG AA ✓ Pass

Any Text WCAG AA ✓ Pass

Large Text (above 18pt) WCAG AAA ✓ Pass

Any Text WCAG AAA ✓ Pass

Black Background



Color Contrast Check

Large Text (above 18pt) WCAG AA × Fail

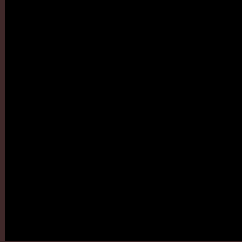
Any Text WCAG AA × Fail

Large Text (above 18pt) WCAG AAA × Fail

Any Text WCAG AAA × Fail

If you want to check with other color combinations, try the [Color Contrast Checker](#).

HunterLab 16.8613, 5.6946, 2.7871 Background



This preview shows how black text looks on a background with the HunterLab color 16.8613, 5.6946, 2.7871.

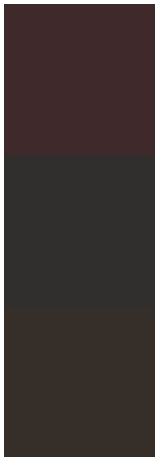


This preview shows how white text looks on a background with the HunterLab color 16.8613, 5.6946,

Color Blindness Simulation

Color vision deficiency is a very complex topic, and I could not describe the different causes any better than Wikipedia does, so if you want to learn more, you should check out their [article about color blindness](#).

Dichromacy



Original Color

16.8613, 5.6946, 2.7871

Protanopia

16.9572, -0.6557, 1.7571

Deuteranopia

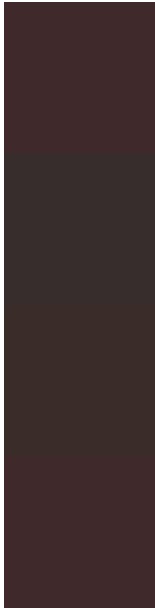
17.0246, 0.5979, 3.1950



Tritanopia

16.9048, 5.9156, 2.1628

Trichromacy



Original Color

16.8613, 5.6946, 2.7871

Protanomaly

16.8609, 1.3464, 2.0340

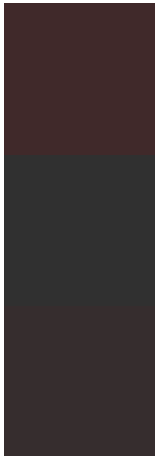
Deuteranomaly

16.9145, 2.5427, 3.1137

Tritanomaly

16.8828, 5.8039, 2.4783

Monochromacy



Original Color

16.8613, 5.6946, 2.7871

Achromatopsia

17.1921, -0.9173, 0.9341

Achromatomaly

16.9065, 1.5900, 1.3809

CSS Examples

Text

The CSS property to change the color of the text to HunterLab 16.8613, 5.6946, 2.7871 is called "color". The color property can be set on classes, ids or directly on the HTML element.

This example shows how text in the color `rgb(64, 41, 42)` looks like.

```
.text, #text, p{  
    color:rgb(64, 41, 42)  
}
```

If you want to add a text shadow in that color use the text-shadow property, you can generate a text shadow directly with our [CSS Text Shadow Generator](#).

Here you see how black text with a 4 pixel rgb(64, 41, 42) colored shadow looks like.

```
.shadow{ text-shadow: 4px 4px 2px rgb(64, 41, 42) }
```

Border

The CSS property to change the border of an element to HunterLab 16.8613, 5.6946, 2.7871 is called "border".

The border property can be set on classes, ids or directly on the HTML element.

This example shows the color as border, it can be applied via the CSS property "border" or "border-color".

```
.border, #border, table{ border:4px solid rgb(64, 41, 42) }
```


If only the border color should be changed use the property `border-color`.

```
.border{ border-color:rgb(64, 41, 42) }
```

If you want to add a box shadow in that color use:

Here you see how a box with a 4 pixel `rgb(64, 41, 42)` colored shadow looks like.

```
.boxshadow{ -moz-box-shadow:4px 4px 4px  
4px rgb(64, 41, 42); -webkit-box-  
shadow:4px 4px 4px 4px rgb(64, 41, 42);  
box-shadow:4px 4px 4px 4px rgb(64, 41, 42)  
}
```

Background

The CSS property to change the background color of an element to HunterLab 16.8613, 5.6946, 2.7871 is called "background". The background property can be set on classes, ids or directly on the HTML element.

```
.background, #background, body{  
background: rgb(64, 41, 42) }
```

If only the background color should be changed can be used:

```
.background{ background-color: rgb(64, 41,  
42) }
```

This example shows the color as background, it is applied via the CSS property "background".

To optimize and compress your CSS code, you can use our [online CSS compressor and optimizer](#) based on csstidy. If you want to create a linear or radial gradient as background or border, check our [CSS Gradient Generator](#).

Hey! You found this booklet interesting? Support Converting Colors with the new Membership Option!

The pro membership hides all ads, plus gives you double the colors in the color bucket, and more awesome pro features!

[Learn more, Memberships starting at \\$2.50/m!](#)

**Follow me
on Twitter!**

@ConvertingColor