

Converting Colors

HunterLab(16.9601, 6.0730,
3.1952)

Have a look what the booklet for
HunterLab(16.9601, 6.0730, 3.1952)
contains.

HunterLab(16.9405, 5.8968, 3.1997)	3
<i>Conversions</i>	4
<i>Details</i>	6
<i>Harmonies</i>	12
<i>Previews</i>	24
<i>Color Blindness Simulation</i>	28
<i>CSS Examples</i>	31

Color

**HunterLab(16.9405, 5.8968,
3.1997)**

Conversions

Conversions Part 1

Format	Color
Hex	412929
RGB	65, 41, 41
RGB Percent	25%, 16%, 16%
CMY	0.7451, 0.8392, 0.8392
CMYK	0.00, 0.37, 0.37, 0.75
HSL	0°, 23%, 21%
HSV	0°, 37%, 25%
XYZ	3.3732, 2.8698, 2.4740
YIQ	48.1760, 14.3040, 5.0880

Conversions

Conversions Part 2

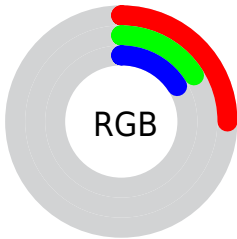
Format	Color
RYB	65, 41, 41
Decimal	4270377
CIELab	19.52, 11.23, 4.59
CIELCh	20, 12.131, 22.214
Yxy	2.8699, 0.3870, 0.3292
Android (android.graphics.Color)	4282460457 (0xFF412929)
YUV	48.1760, -3.5378, 14.7546
Hunter-Lab	16.9405, 5.8968, 3.1997

Details

The HunterLab color **16.9405, 5.8968, 3.1997** is a dark color, and the websafe version is hex **333333**. A complement of this color would be **21.5256, -6.4999, -0.6247**, and the grayscale version is **17.2591, -0.9209, 0.9377**.

A 20% lighter version of the original color is **33.0225, 6.7886, 4.6599**, and **3.8565, 6.6043, 2.4919** is the 20% darker color. If you saturate the color by 10%, you get **15.5410, 7.9783, 3.7969**, and if you desaturate by 10%, it is **18.4567, 3.8706, 2.6305**.

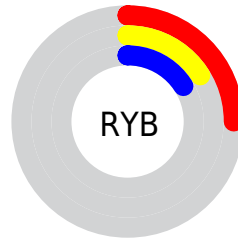
Distribution



Red (25%)

Green (16%)

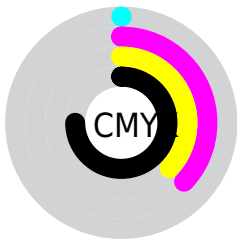
Blue (16%)



Red (25%)

Yellow (16%)

Blue (16%)

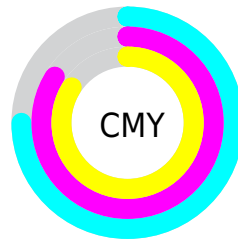


Cyan (0%)

Magenta (37%)

Yellow (37%)

Black (75%)



Cyan (75%)

Magenta (84%)

Yellow (84%)

Brightness & Saturation Gradients

These gradients show how the HunterLab color 16.9405, 5.8968, 3.1997 changes by changing the brightness by 10 percent. The first figure shows a shift by +10% for each color and the second figure -10%.

Similar to the brightness gradients but the following saturation gradients show a change of the HunterLab color 16.9405, 5.8968, 3.1997 by changing the saturation by 10% instead.

■ 16.9405, 5.8968,
3.1997

■ 16.9405, 5.8968,
3.1997

■ 112.5533, 6.1284,
10.6489

■ 10.3161, 5.3766,
2.4720

■ 33.1080, 6.5171,
4.7296

0.0000, INF, NaN

0.0000, NaN, NaN

■ 42.4451, 6.6704,
5.5142

0.0000, NaN, NaN

■ 52.5249, 6.7401,
6.3175

0.0000, NaN, NaN

0.0000, NaN, NaN

■ 63.2964, 6.7368,
7.1411

0.0000, NaN, NaN

■ 74.7175, 6.6682,
7.9857

0.0000, NaN, NaN

■ 86.7534, 6.5408,

0.0000, NaN, NaN

8.8519

99.3739, 6.3595,
9.7396

16.9405, 5.8968,
3.1997

16.9405, 5.8968,
3.1997

15.5410, 7.9783,
3.7969

18.4567, 3.8706,
2.6305

14.2769, 10.0843,
4.4115

20.0714, 1.9161,
2.0919

13.1714, 12.1522,
5.0247

21.7712, 0.0346,
1.5839

12.2477, 14.0850,
5.6057

23.5445, -1.7774,
1.1045

11.5198, 15.7712,
6.1183

25.3823, -3.5267,
0.6508

■ 10.8246, 17.5449,
6.6626

■ 27.2769, -5.2207,
0.2196

■ 10.6015, 18.1531,
6.8504

■ 29.2222, -6.8671,
-0.1919

■ 31.2132, -8.4727,
-0.5864

■ 33.2456, -10.0437,
-0.9664

Harmonies

Analogous

The Analogous color harmony consists of three colors that are next to each other on the color wheel.



16.9409, 6.4102, 0.0177



16.9405, 5.8968, 3.1997



16.9409, 3.4882, 5.2966

Triad

The Triadic color harmony groups three colors that are evenly spaced from another and form a triangle on the color wheel.



16.9409, 5.8960, 3.2000



16.9409, -5.9736, 4.4408



16.9409, -1.8206, -6.8643

Complementary

The Complementary color scheme is a pair of colors which are on the opposite of each other on the color wheel.



16.9405, 5.8968, 3.1997



21.5256, -6.4999, -0.6247

Split Complementary

Split-complementary colors differ from the complementary color scheme. The scheme consists of three colors, the original color and two neighbors of the complement color.



16.9409, -4.8913, -5.0608



16.9405, 5.8968, 3.1997



16.9409, -7.1569, 1.7793

Square

The Square scheme is like the rectangle color scheme, but the four colors are evenly spaced on the color wheel.



16.9409, 5.8960, 3.2000



16.9409, -3.4114, 5.9033



16.9409, -6.7776, -1.7238



16.9409, 1.7565, -6.2662

Rectangle

The Rectangle color scheme consists of four colors that form a rectangle on the color wheel.



16.9405, 5.8968, 3.1997



16.9409, 1.2332, 6.0171



16.9409, -6.7776, -1.7238



16.9409, -2.9418, -6.5077

Sweetspot

The Sweet Spot groups the original color and five complimentary colors.



16.9409, 5.8960, 3.2000



27.2325, 1.1417, 2.3495



17.5824, 9.0995, -5.8708



14.2385, 0.6605, 1.2497



63.7533, -3.4017, 3.4638



15.6573, -0.8354, 0.8507

Same Dimension

The Same Dimension uses a secret algorithm to generate beautiful new colors.



16.9409, 5.8960, 3.2000



20.3498, 10.0595, 4.8418



19.5708, 0.8965, 5.7196



11.5712, 0.1802, 0.8961



15.9249, 27.2697, 10.2903



39.8894, 68.3097, 25.7755

Inverse Universe

The Inverse Universe completely reimagines the original color for something new.



21.5256, -6.4999, -0.6247



27.5922, -9.6916, -1.2567



18.4373, -1.8486, -4.7537



12.1665, -1.4078, 0.4067



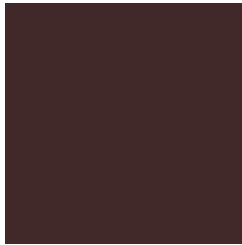
30.6447, -16.2451, -3.2347



76.7608, -40.6915, -8.1031

Previews

White Background



This preview shows how the HunterLab color 16.9405, 5.8968, 3.1997 looks on a white background.

Color Contrast Check

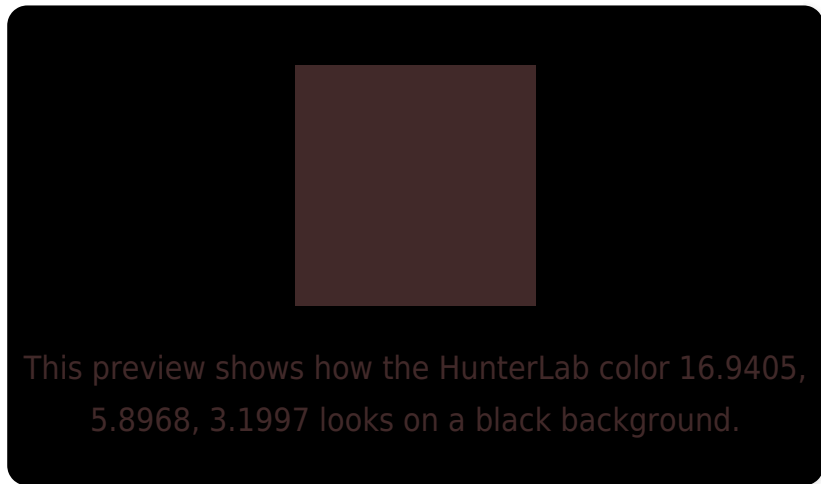
Large Text (above 18pt) WCAG AA ✓ Pass

Any Text WCAG AA ✓ Pass

Large Text (above 18pt) WCAG AAA ✓ Pass

Any Text WCAG AAA ✓ Pass

Black Background



Color Contrast Check

Large Text (above 18pt) WCAG AA × Fail

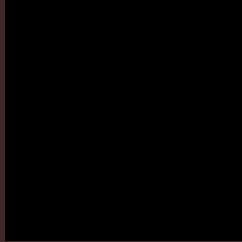
Any Text WCAG AA × Fail

Large Text (above 18pt) WCAG AAA × Fail

Any Text WCAG AAA × Fail

If you want to check with other color combinations, try the [Color Contrast Checker](#).

HunterLab 16.9405, 5.8968, 3.1997 Background



This preview shows how black text looks on a background with the HunterLab color 16.9405, 5.8968, 3.1997.

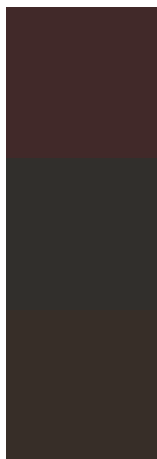


This preview shows how white text looks on a background with the HunterLab color 16.9405, 5.8968,

Color Blindness Simulation

Color vision deficiency is a very complex topic, and I could not describe the different causes any better than Wikipedia does, so if you want to learn more, you should check out their [article about color blindness](#).

Dichromacy



Original Color

16.9405, 5.8968, 3.1997

Protanopia

16.9347, -0.7785, 2.0788

Deuteranopia

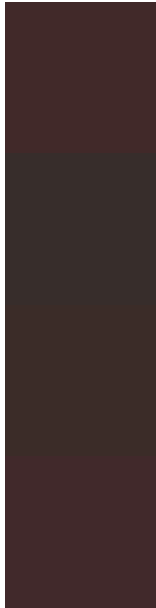
17.0863, 0.7665, 3.5759



Tritanopia

17.0045, 6.2216, 2.2786

Trichromacy



Original Color

16.9405, 5.8968, 3.1997

Protanomaly

16.9216, 1.5054, 2.4455

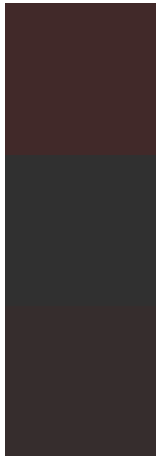
Deuteranomaly

16.9834, 2.7274, 3.5046

Tritanomaly

16.9827, 6.1109, 2.5925

Monochromacy



Original Color

16.9405, 5.8968, 3.1997

Achromatopsia

17.1921, -0.9173, 0.9341

Achromatomaly

16.8834, 1.4669, 1.7109

CSS Examples

Text

The CSS property to change the color of the text to HunterLab 16.9405, 5.8968, 3.1997 is called "color". The color property can be set on classes, ids or directly on the HTML element.

This example shows how text in the color `rgb(65, 41, 41)` looks like.

```
.text, #text, p{  
    color:rgb(65, 41, 41)  
}
```

If you want to add a text shadow in that color use the text-shadow property, you can generate a text shadow directly with our [CSS Text Shadow Generator](#).

Here you see how black text with a 4 pixel rgb(65, 41, 41) colored shadow looks like.

```
.shadow{ text-shadow: 4px 4px 2px rgb(65, 41, 41) }
```

Border

The CSS property to change the border of an element to HunterLab 16.9405, 5.8968, 3.1997 is called "border". The border property can be set on classes, ids or directly on the HTML element.

This example shows the color as border, it can be applied via the CSS property "border" or "border-color".

```
.border, #border, table{ border:4px solid rgb(65, 41, 41) }
```


If only the border color should be changed use the property border-color.

```
.border{ border-color:rgb(65, 41, 41) }
```

If you want to add a box shadow in that color use:

Here you see how a box with a 4 pixel rgb(65, 41, 41) colored shadow looks like.

```
.boxshadow{ -moz-box-shadow:4px 4px 4px  
4px rgb(65, 41, 41); -webkit-box-  
shadow:4px 4px 4px 4px rgb(65, 41, 41);  
box-shadow:4px 4px 4px 4px rgb(65, 41, 41)  
}
```

Background

The CSS property to change the background color of an element to HunterLab 16.9405, 5.8968, 3.1997 is called "background". The background property can be set on classes, ids or directly on the HTML element.

```
.background, #background, body{  
background: rgb(65, 41, 41) }
```

If only the background color should be changed can be used:

```
.background{ background-color: rgb(65, 41,  
41) }
```

This example shows the color as background, it is applied via the CSS property "background".

To optimize and compress your CSS code, you can use our [online CSS compressor and optimizer](#) based on csstidy. If you want to create a linear or radial gradient as background or border, check our [CSS Gradient Generator](#).

Hey! You found this booklet interesting? Support Converting Colors with the new Membership Option!

The pro membership hides all ads, plus gives you double the colors in the color bucket, and more awesome pro features!

[Learn more, Memberships starting at \\$2.50/m!](#)

**Follow me
on Twitter!**

@ConvertingColor