

Converting Colors

HunterLab(17.0173, 5.4764,
3.1039)

Have a look what the booklet for
HunterLab(17.0173, 5.4764, 3.1039)
contains.

| | |
|---|----|
| HunterLab(17.0678, 5.2738, 3.0001) | 3 |
| <i>Conversions</i> | 4 |
| <i>Details</i> | 6 |
| <i>Harmonies</i> | 12 |
| <i>Previews</i> | 24 |
| <i>Color Blindness Simulation</i> | 28 |
| <i>CSS Examples</i> | 31 |

Color

**HunterLab(17.0678, 5.2738,
3.0001)**

Conversions

Conversions Part 1

| Format | Color |
|-------------|--------------------------|
| Hex | 402A2A |
| RGB | 64, 42, 42 |
| RGB Percent | 25%, 16%, 16% |
| CMY | 0.7490, 0.8353, 0.8353 |
| CMYK | 0.00, 0.34, 0.34, 0.75 |
| HSL | 0°, 21%, 21% |
| HSV | 0°, 34%, 25% |
| XYZ | 3.3602, 2.9131, 2.5757 |
| YIQ | 48.5780, 13.1120, 4.6640 |

Conversions

Conversions Part 2

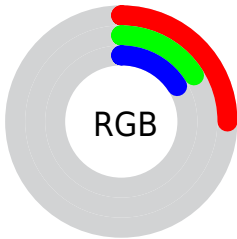
| Format | Color |
|-------------------------------------|------------------------------|
| RYB | 64, 42, 42 |
| Decimal | 4205098 |
| CIELab | 19.69, 10.25, 4.13 |
| CIElCh | 20, 11.053, 21.922 |
| Yxy | 2.9132, 0.3797, 0.3292 |
| Android (android.graphics.Color) | 4282395178 (0xFF402A2A) |
| YUV | 48.5780, -3.2430, 13.5251 |
| Hunter-Lab | 17.0678, 5.2738, 3.0001 |

Details

The HunterLab color **17.0678, 5.2738, 3.0001** is a dark color, and the websafe version is hex **333333**. A complement of this color would be **21.2816, -6.0948, -0.5065**, and the grayscale version is **17.3923, -0.9280, 0.9450**.

A 20% lighter version of the original color is **33.1892, 6.1275, 4.4504**, and **3.8565, 6.6043, 2.4919** is the 20% darker color. If you saturate the color by 10%, you get **15.6613, 7.3055, 3.5801**, and if you desaturate by 10%, it is **18.5839, 3.3015, 2.4489**.

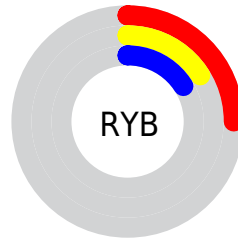
Distribution



Red (25%)

Green (16%)

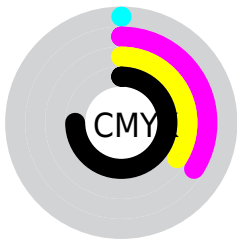
Blue (16%)



Red (25%)

Yellow (16%)

Blue (16%)

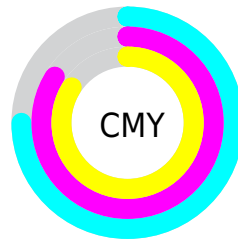


Cyan (0%)

Magenta (34%)

Yellow (34%)

Black (75%)



Cyan (75%)

Magenta (84%)

Yellow (84%)

Brightness & Saturation Gradients

These gradients show how the HunterLab color 17.0678, 5.2738, 3.0001 changes by changing the brightness by 10 percent. The first figure shows a shift by +10% for each color and the second figure -10%.

Similar to the brightness gradients but the following saturation gradients show a change of the HunterLab color 17.0678, 5.2738, 3.0001 by changing the saturation by 10% instead.

■ 17.0678, 5.2738,
3.0001

■ 17.0678, 5.2738,
3.0001

■ 112.7924, 5.0483,
10.2206

■ 10.4240, 4.8247,
2.2922

■ 33.2670, 5.7693,
4.4624

0.0000, INF, NaN

0.0000, NaN, NaN

■ 42.6179, 5.8669,
5.2188

0.0000, NaN, NaN

■ 52.7104, 5.8845,
5.9962

0.0000, NaN, NaN

0.0000, NaN, NaN

■ 63.4938, 5.8318,
6.7957

0.0000, NaN, NaN

■ 74.9261, 5.7165,
7.6179

0.0000, NaN, NaN

■ 86.9726, 5.5445,

0.0000, NaN, NaN

8.4628

99.6033, 5.3204,
9.3305

17.0678, 5.2738,
3.0001

17.0678, 5.2738,
3.0001

15.6613, 7.3055,
3.5801

18.5839, 3.3015,
2.4489

14.3819, 9.3722,
4.1804

20.1927, 1.4006,
1.9279

13.2517, 11.4211,
4.7855

21.8816, -0.4290,
1.4365

12.2934, 13.3672,
5.3685

23.6401, -2.1923,
0.9723

11.5286, 15.0918,
5.8912

25.4597, -3.8959,
0.5326

■ 10.8450, 16.7908,
6.4113

■ 27.3333, -5.5473,
0.1142

■ 10.4407, 17.8777,
6.7465

■ 29.2553, -7.1537,
-0.2856

■ 31.2209, -8.7217,
-0.6695

■ 33.2262, -10.2573,
-1.0395

Harmonies

Analogous

The Analogous color harmony consists of three colors that are next to each other on the color wheel.



17.0682, 5.7179, 0.0735



17.0678, 5.2738, 3.0001



17.0682, 3.1108, 4.9731

Triad

The Triadic color harmony groups three colors that are evenly spaced from another and form a triangle on the color wheel.



17.0682, 5.2731, 3.0004



17.0682, -5.5521, 4.2002



17.0682, -1.7799, -6.0567

Complementary

The Complementary color scheme is a pair of colors which are on the opposite of each other on the color wheel.



17.0678, 5.2738, 3.0001



21.2816, -6.0948, -0.5065

Split Complementary

Split-complementary colors differ from the complementary color scheme. The scheme consists of three colors, the original color and two neighbors of the complement color.



17.0682, -4.5930, -4.4366



17.0678, 5.2738, 3.0001



17.0682, -6.6620, 1.7425

Square

The Square scheme is like the rectangle color scheme, but the four colors are evenly spaced on the color wheel.



17.0682, 5.2731, 3.0004



17.0682, -3.1799, 5.5703



17.0682, -6.3245, -1.4395



17.0682, 1.4816, -5.5478

Rectangle

The Rectangle color scheme consists of four colors that form a rectangle on the color wheel.



17.0678, 5.2738, 3.0001



17.0682, 1.0687, 5.6644



17.0682, -6.3245, -1.4395



17.0682, -2.8056, -5.7338

Sweetspot

The Sweet Spot groups the original color and five complimentary colors.



17.0682, 5.2731, 3.0004



27.4634, 0.8883, 2.2812



17.6525, 8.2183, -5.2702



14.3451, 0.5430, 1.2181



63.7533, -3.4017, 3.4638



15.6573, -0.8354, 0.8507

Same Dimension

The Same Dimension uses a secret algorithm to generate beautiful new colors.



17.0682, 5.2731, 3.0004



20.9057, 9.2104, 4.5974



19.5023, 0.7010, 5.3700



11.5713, 0.1802, 0.8961



15.9250, 27.2696, 10.2903



39.8894, 68.3096, 25.7755

Inverse Universe

The Inverse Universe completely reimagines the original color for something new.



21.2816, -6.0948, -0.5065



27.7042, -9.2697, -1.1072



18.4625, -1.8217, -4.2321



12.1665, -1.4078, 0.4067



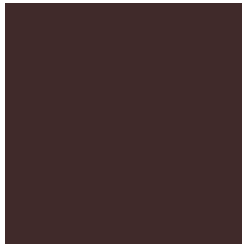
30.6445, -16.2449, -3.2349



76.7604, -40.6911, -8.1035

Previews

White Background



This preview shows how the HunterLab color 17.0678, 5.2738, 3.0001 looks on a white background.

Color Contrast Check

Large Text (above 18pt) WCAG AA ✓ Pass

Any Text WCAG AA ✓ Pass

Large Text (above 18pt) WCAG AAA ✓ Pass

Any Text WCAG AAA ✓ Pass

Black Background



Color Contrast Check

Large Text (above 18pt) WCAG AA × Fail

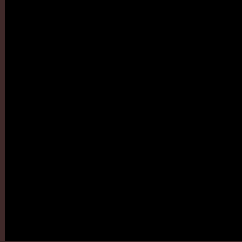
Any Text WCAG AA × Fail

Large Text (above 18pt) WCAG AAA × Fail

Any Text WCAG AAA × Fail

If you want to check with other color combinations, try the [Color Contrast Checker](#).

HunterLab 17.0678, 5.2738, 3.0001 Background



This preview shows how black text looks on a background with the HunterLab color 17.0678, 5.2738, 3.0001.



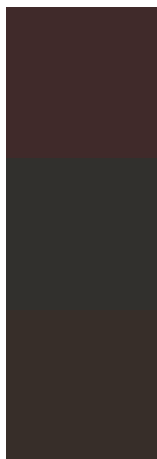
This preview shows how white text looks on a background with the HunterLab color 17.0678, 5.2738,

3.0001.

Color Blindness Simulation

Color vision deficiency is a very complex topic, and I could not describe the different causes any better than Wikipedia does, so if you want to learn more, you should check out their [article about color blindness](#).

Dichromacy



Original Color

17.0678, 5.2738, 3.0001

Protanopia

17.1940, -1.0500, 2.0157

Deuteranopia

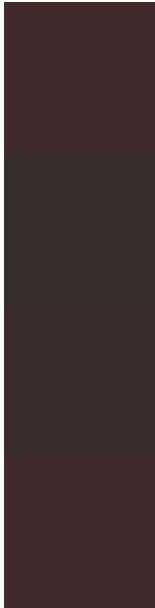
17.1065, 0.8749, 3.2853



Tritanopia

17.1329, 5.6067, 2.0641

Trichromacy



Original Color

17.0678, 5.2738, 3.0001

Protanomaly

17.0883, 0.9410, 2.2786

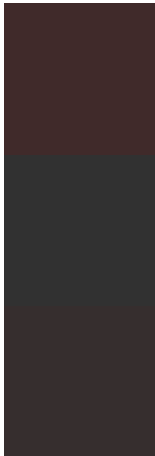
Deuteranomaly

17.1360, 2.1325, 3.3380

Tritanomaly

17.1107, 5.4933, 2.3829

Monochromacy



Original Color

17.0678, 5.2738, 3.0001

Achromatopsia

17.5253, -0.9351, 0.9522

Achromatomaly

17.1333, 1.1825, 1.6336

CSS Examples

Text

The CSS property to change the color of the text to HunterLab 17.0678, 5.2738, 3.0001 is called "color". The color property can be set on classes, ids or directly on the HTML element.

This example shows how text in the color `rgb(64, 42, 42)` looks like.

```
.text, #text, p{  
    color:rgb(64, 42, 42)  
}
```

If you want to add a text shadow in that color use the text-shadow property, you can generate a text shadow directly with our [CSS Text Shadow Generator](#).

Here you see how black text with a 4 pixel rgb(64, 42, 42) colored shadow looks like.

```
.shadow{ text-shadow: 4px 4px 2px rgb(64, 42, 42) }
```

Border

The CSS property to change the border of an element to HunterLab 17.0678, 5.2738, 3.0001 is called "border".

The border property can be set on classes, ids or directly on the HTML element.

This example shows the color as border, it can be applied via the CSS property "border" or "border-color".

```
.border, #border, table{ border:4px solid rgb(64, 42, 42) }
```


If only the border color should be changed use the property `border-color`.

```
.border{ border-color:rgb(64, 42, 42) }
```

If you want to add a box shadow in that color use:

Here you see how a box with a 4 pixel `rgb(64, 42, 42)` colored shadow looks like.

```
.boxshadow{ -moz-box-shadow:4px 4px 4px  
4px rgb(64, 42, 42); -webkit-box-  
shadow:4px 4px 4px 4px rgb(64, 42, 42);  
box-shadow:4px 4px 4px 4px rgb(64, 42, 42)  
}
```

Background

The CSS property to change the background color of an element to HunterLab 17.0678, 5.2738, 3.0001 is called "background". The background property can be set on classes, ids or directly on the HTML element.

```
.background, #background, body{  
background: rgb(64, 42, 42) }
```

If only the background color should be changed can be used:

```
.background{ background-color: rgb(64, 42,  
42) }
```

This example shows the color as background, it is applied via the CSS property "background".

To optimize and compress your CSS code, you can use our [online CSS compressor and optimizer](#) based on csstidy. If you want to create a linear or radial gradient as background or border, check our [CSS Gradient Generator](#).

Hey! You found this booklet interesting? Support Converting Colors with the new Membership Option!

The pro membership hides all ads, plus gives you double the colors in the color bucket, and more awesome pro features!

[Learn more, Memberships starting at \\$2.50/m!](#)

**Follow me
on Twitter!**

@ConvertingColor