

# Converting Colors

HunterLab(17.0223, 10.9444,  
6.2589)

Have a look what the booklet for  
HunterLab(17.0223, 10.9444,  
6.2589) contains.

<b>HunterLab(17.1419, 11.0162, 6.2720)</b> .....	3
<b><i>Conversions</i></b> .....	4
<b><i>Details</i></b> .....	6
<b><i>Harmonies</i></b> .....	12
<b><i>Previews</i></b> .....	24
<b><i>Color Blindness Simulation</i></b> .....	28
<b><i>CSS Examples</i></b> .....	31

# Color

**HunterLab(17.1419, 11.0162,  
6.2720)**

# Conversions

## Conversions Part 1

Format	Color
Hex	4D241F
RGB	77, 36, 31
RGB Percent	30%, 14%, 12%
CMY	0.6980, 0.8588, 0.8784
CMYK	0.00, 0.53, 0.60, 0.70
HSL	7°, 43%, 21%
HSV	7°, 60%, 30%
XYZ	3.9388, 2.9384, 1.6559
YIQ	47.6890, 26.0410, 7.1370

# Conversions

## Conversions Part 2

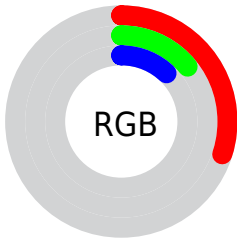
<b>Format</b>	<b>Color</b>
<b>RYB</b>	77, 37, 31
Decimal	5055519
CIELab	19.80, 18.73, 12.17
CIELCh	20, 22.336, 33.003
Yxy	2.9386, 0.4616, 0.3444
Android (android.graphics.Color)	4283245599 (0xFF4D241F)
YUV	47.6890, -8.2277, 25.7057
Hunter-Lab	17.1419, 11.0162, 6.2720

# Details

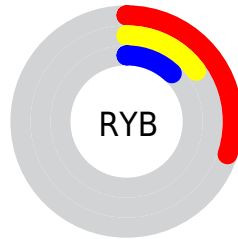
The HunterLab color **17.1419, 11.0162, 6.2720** is a dark color, and the websafe version is hex **663333**. A complement of this color would be **23.3699, -8.6509, -3.5638**, and the grayscale version is **17.1094, -0.9129, 0.9296**.

A 20% lighter version of the original color is **33.4809, 12.5322, 9.0623**, and **5.5612, 9.5631, 3.2880** is the 20% darker color. If you saturate the color by 10%, you get **15.8948, 13.2978, 6.9442**, and if you desaturate by 10%, it is **18.5479, 8.7384, 5.5293**.

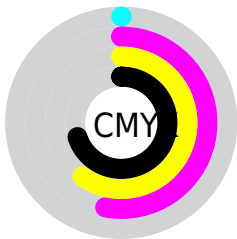
# Distribution



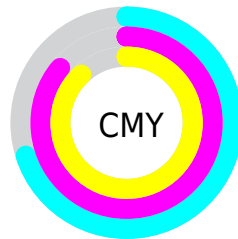
- Red (30%)
- Green (14%)
- Blue (12%)



- Red (30%)
- Yellow (15%)
- Blue (12%)



- Cyan (0%)
- Magenta (53%)
- Yellow (60%)
- Black (70%)



- Cyan (70%)
- Magenta (86%)
- Yellow (88%)

# Brightness & Saturation Gradients

These gradients show how the HunterLab color 17.1419, 11.0162, 6.2720 changes by changing the brightness by 10 percent. The first figure shows a shift by +10% for each color and the second figure -10%.

Similar to the brightness gradients but the following saturation gradients show a change of the HunterLab color 17.1419, 11.0162, 6.2720 by changing the saturation by 10% instead.



■ 17.1419, 11.0162,  
6.2720

■ 17.1419, 11.0162,  
6.2720

■ 112.9314, 14.5194,  
17.7403

■ 10.4870, 10.0320,  
5.4736

■ 33.3596, 12.4998,  
8.9968

0.0000, INF, NaN

0.0000, NaN, NaN

■ 42.7184, 13.0488,  
10.2805

0.0000, NaN, NaN

■ 52.8184, 13.4933,  
11.5391

0.0000, NaN, NaN

0.0000, NaN, NaN

■ 63.6086, 13.8464,  
12.7838

0.0000, NaN, NaN

■ 75.0475, 14.1181,  
14.0219

0.0000, NaN, NaN

■ 87.1001, 14.3166,

0.0000, NaN, NaN

15.2584

99.7367, 14.4486,  
16.4970

17.1419, 11.0162,  
6.2720

17.1419, 11.0162,  
6.2720

15.8948, 13.2978,  
6.9442

18.5479, 8.7384,  
5.5293

14.8272, 15.5056,  
7.5098

20.0903, 6.5176,  
4.7429

13.9591, 17.5214,  
7.9447

21.7508, 4.3783,  
3.9324

13.2810, 19.1550,  
8.4934

23.5133, 2.3298,  
3.1103

13.2648, 19.1945,  
8.5097

25.3645, 0.3718,  
2.2842

■ 27.2931, -1.5013,  
1.4587

■ 29.2900, -3.2974,  
0.6358

■ 31.3475, -5.0252,  
-0.1835

■ 33.4594, -6.6933,  
-0.9990

# Harmonies

## Analogous

The Analogous color harmony consists of three colors that are next to each other on the color wheel.



17.1423, 13.6091, 1.5507



17.1419, 11.0162, 6.2720



17.1423, 5.2031, 8.5578

# Triad

The Triadic color harmony groups three colors that are evenly spaced from another and form a triangle on the color wheel.



17.1423, 11.0151, 6.2723



17.1423, -10.7807, 5.5404



17.1423, -0.2489, -15.9245

# Complementary

The Complementary color scheme is a pair of colors which are on the opposite of each other on the color wheel.



17.1419, 11.0162, 6.2720



23.3699, -8.6509, -3.5638

# Split Complementary

Split-complementary colors differ from the complementary color scheme. The scheme consists of three colors, the original color and two neighbors of the complement color.



17.1423, -6.2807, -13.5963



17.1419, 11.0162, 6.2720



17.1423, -11.7934, 0.2916

# Square

The Square scheme is like the rectangle color scheme, but the four colors are evenly spaced on the color wheel.



17.1423, 11.0151, 6.2723



17.1423, -7.2671, 8.2607



17.1423, -10.2743, -6.9862



17.1423, 6.5209, -12.5111



# Rectangle

The Rectangle color scheme consists of four colors that form a rectangle on the color wheel.



17.1419, 11.0162, 6.2720



17.1423, 0.6503, 9.1072



17.1423, -10.2743, -6.9862



17.1423, -2.4273, -15.7895

# Sweetspot

The Sweet Spot groups the original color and five complimentary colors.



17.1423, 11.0151, 6.2723



30.8918, 2.7513, 3.9348



17.4094, 18.0648, -10.0694



15.6250, 1.6442, 2.1135



66.9319, -3.5713, 3.6365



18.1947, -0.9708, 0.9886



# Same Dimension

The Same Dimension uses a secret algorithm to generate beautiful new colors.



17.1423, 11.0151, 6.2723



20.0020, 18.7416, 9.4253



21.8258, 1.4811, 9.9534



13.1435, 0.0841, 1.1278



17.5107, 26.4436, 11.2530



41.7539, 67.2364, 26.9056



# Inverse Universe

The Inverse Universe completely reimagines the original color for something new.



23.3699, -8.6509, -3.5638



29.5808, -12.2633, -5.8738



17.4853, 0.2280, -13.0293



13.6548, -1.4704, 0.3341



29.0271, -13.0923, -8.0188

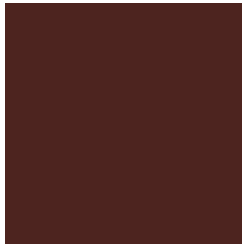


70.0921, -31.1480, -20.3694



# Previews

## White Background



This preview shows how the HunterLab color 17.1419, 11.0162, 6.2720 looks on a white background.

## Color Contrast Check

Large Text (above 18pt) WCAG AA ✓ Pass

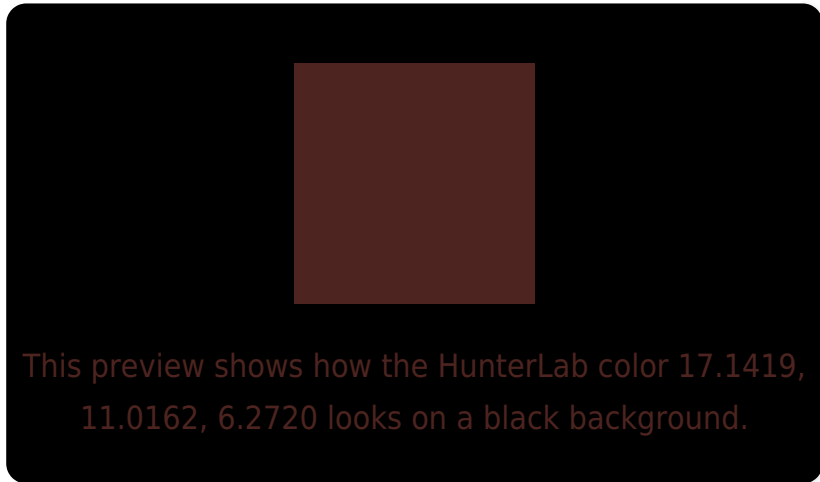
Any Text WCAG AA ✓ Pass

Large Text (above 18pt) WCAG AAA ✓ Pass

Any Text WCAG AAA ✓ Pass



# Black Background



## Color Contrast Check

Large Text (above 18pt) WCAG AA × Fail

Any Text WCAG AA × Fail

Large Text (above 18pt) WCAG AAA × Fail

Any Text WCAG AAA × Fail

If you want to check with other color combinations, try the [Color Contrast Checker](#).

## HunterLab 17.1419, 11.0162, 6.2720 Background



This preview shows how black text looks on a background with the HunterLab color 17.1419, 11.0162, 6.2720.



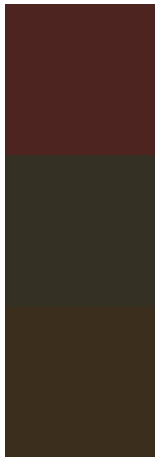
This preview shows how white text looks on a background with the HunterLab color 17.1419, 11.0162,



# Color Blindness Simulation

Color vision deficiency is a very complex topic, and I could not describe the different causes any better than Wikipedia does, so if you want to learn more, you should check out their [article about color blindness](#).

## Dichromacy



### Original Color

17.1419, 11.0162, 6.2720

### Protanopia

17.4759, -1.6471, 5.0771

### Deuteranopia

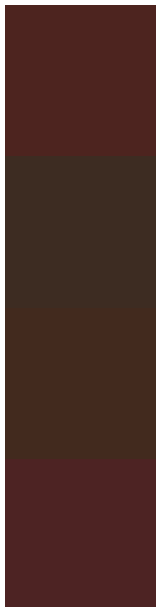
17.2410, 0.9129, 6.6424



## Tritanopia

17.0687, 11.9138, 4.6465

# Trichromacy



## Original Color

17.1419, 11.0162, 6.2720

## Protanomaly

17.0557, 2.7417, 5.2967

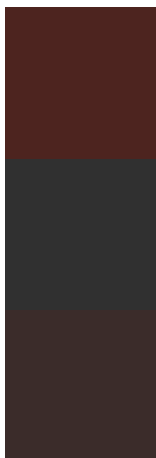
## Deuteranomaly

17.0526, 4.7960, 6.3211

## Tritanomaly

17.0329, 11.7443, 5.1662

# Monochromacy



## Original Color

17.1419, 11.0162, 6.2720

## Achromatopsia

17.1921, -0.9173, 0.9341

## Achromatomaly

17.0245, 2.9434, 2.9133

# CSS Examples

## Text

The CSS property to change the color of the text to HunterLab 17.1419, 11.0162, 6.2720 is called "color". The color property can be set on classes, ids or directly on the HTML element.

This example shows how text in the color `rgb(77, 36, 31)` looks like.

```
.text, #text, p{  
    color:rgb(77, 36, 31)  
}
```

If you want to add a text shadow in that color use the text-shadow property, you can generate a text shadow directly with our [CSS Text Shadow Generator](#).

Here you see how black text with a 4 pixel rgb(77, 36, 31) colored shadow looks like.

```
.shadow{ text-shadow: 4px 4px 2px rgb(77, 36, 31) }
```

## Border

The CSS property to change the border of an element to HunterLab 17.1419, 11.0162, 6.2720 is called "border". The border property can be set on classes, ids or directly on the HTML element.

This example shows the color as border, it can be applied via the CSS property "border" or "border-color".

```
.border, #border, table{ border:4px solid rgb(77, 36, 31) }
```



If only the border color should be changed use the property border-color.

```
.border{ border-color:rgb(77, 36, 31) }
```

If you want to add a box shadow in that color use:

Here you see how a box with a 4 pixel rgb(77, 36, 31) colored shadow looks like.

```
.boxshadow{ -moz-box-shadow:4px 4px 4px  
4px rgb(77, 36, 31); -webkit-box-  
shadow:4px 4px 4px 4px rgb(77, 36, 31);  
box-shadow:4px 4px 4px 4px rgb(77, 36, 31)  
}
```

# Background

The CSS property to change the background color of an element to HunterLab 17.1419, 11.0162, 6.2720 is called "background". The background property can be set on classes, ids or directly on the HTML element.

```
.background, #background, body{  
background: rgb(77, 36, 31) }
```

If only the background color should be changed can be used:

```
.background{ background-color: rgb(77, 36,  
31) }
```

This example shows the color as background, it is applied via the CSS property "background".

To optimize and compress your CSS code, you can use our [online CSS compressor and optimizer](#) based on csstidy. If you want to create a linear or radial gradient as background or border, check our [CSS Gradient Generator](#).

Hey! You found this booklet  
interesting? Support Converting  
Colors with the new Membership  
Option!

The pro membership hides all ads, plus gives you  
double the colors in the color bucket, and more  
awesome pro features!

**[Learn more, Memberships starting at \\$2.50/m!](#)**

**Follow me  
on Twitter!**

@ConvertingColor