

Converting Colors

HunterLab(17.0486, 6.0367,
4.8064)

Have a look what the booklet for
HunterLab(17.0486, 6.0367, 4.8064)
contains.

HunterLab(17.0486, 6.0367, 4.8064)	3
<i>Conversions</i>	4
<i>Details</i>	6
<i>Harmonies</i>	12
<i>Previews</i>	24
<i>Color Blindness Simulation</i>	28
<i>CSS Examples</i>	31

Color

**HunterLab(17.0486, 6.0367,
4.8064)**

Conversions

Conversions Part 1

Format	Color
Hex	432924
RGB	67, 41, 36
RGB Percent	26%, 16%, 14%
CMY	0.7373, 0.8392, 0.8588
CMYK	0.00, 0.39, 0.46, 0.74
HSL	10°, 30%, 20%
HSV	10°, 46%, 26%
XYZ	3.4261, 2.9065, 2.0495
YIQ	48.2040, 17.1010, 3.9570

Conversions

Conversions Part 2

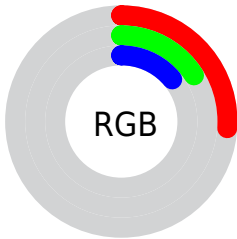
Format	Color
RYB	67, 42, 36
Decimal	4401444
CIELab	19.67, 11.43, 8.29
CIElCh	20, 14.124, 35.945
Yxy	2.9067, 0.4087, 0.3468
Android (android.graphics.Color)	4282591524 (0xFF432924)
YUV	48.2040, -6.0166, 16.4841
Hunter-Lab	17.0486, 6.0367, 4.8064

Details

The HunterLab color **17.0486, 6.0367, 4.8064** is a dark color, and the websafe version is hex **663333**. A complement of this color would be **20.5558, -5.8991, -2.7533**, and the grayscale version is **17.2757, -0.9218, 0.9386**.

A 20% lighter version of the original color is **33.0874, 6.7171, 6.9063**, and **4.1300, 7.0728, 2.6687** is the 20% darker color. If you saturate the color by 10%, you get **15.8374, 7.8171, 5.4708**, and if you desaturate by 10%, it is **18.3532, 4.3222, 4.0942**.

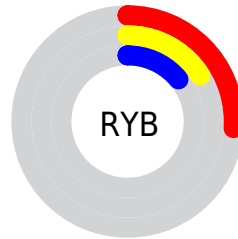
Distribution



Red (26%)

Green (16%)

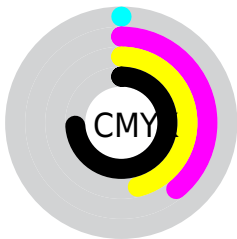
Blue (14%)



Red (26%)

Yellow (16%)

Blue (14%)

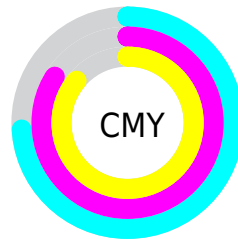


Cyan (0%)

Magenta (39%)

Yellow (46%)

Black (74%)



Cyan (74%)

Magenta (84%)

Yellow (86%)

Brightness & Saturation Gradients

These gradients show how the HunterLab color 17.0486, 6.0367, 4.8064 changes by changing the brightness by 10 percent. The first figure shows a shift by +10% for each color and the second figure -10%.

Similar to the brightness gradients but the following saturation gradients show a change of the HunterLab color 17.0486, 6.0367, 4.8064 by changing the saturation by 10% instead.

■ 17.0486, 6.0367,
4.8064

■ 17.0486, 6.0367,
4.8064

■ 112.7564, 6.3506,
14.1785

■ 10.4078, 5.5049,
3.9499

■ 33.2431, 6.6784,
6.9047

0.0000, INF, NaN

0.0000, NaN, NaN

■ 42.5918, 6.8417,
7.9275

0.0000, NaN, NaN

■ 52.6825, 6.9208,
8.9487

0.0000, NaN, NaN

0.0000, NaN, NaN

■ 63.4640, 6.9265,
9.9740

0.0000, NaN, NaN

■ 74.8947, 6.8665,
11.0075

0.0000, NaN, NaN

■ 86.9396, 6.7474,

0.0000, NaN, NaN

12.0517

99.5687, 6.5740,
13.1083

17.0486, 6.0367,
4.8064

17.0486, 6.0367,
4.8064

15.8374, 7.8171,
5.4708

18.3532, 4.3222,
4.0942

14.7316, 9.6460,
6.0678

19.7381, 2.6843,
3.3474

13.7465, 11.4859,
6.5741

21.1937, 1.1229,
2.5764

12.8970, 13.2782,
6.9649

22.7116, -0.3657,
1.7880

12.1830, 14.8865,
7.4183

24.2846, -1.7872,
0.9870

■ 11.9511, 15.4131,
7.6341

■ 25.9068, -3.1482,
0.1766

■ 27.5732, -4.4555,
-0.6413

■ 29.2796, -5.7153,
-1.4652

■ 31.0225, -6.9335,
-2.2944

Harmonies

Analogous

The Analogous color harmony consists of three colors that are next to each other on the color wheel.



17.0490, 7.7658, 1.6950



17.0486, 6.0367, 4.8064



17.0490, 2.4624, 6.5025

Triad

The Triadic color harmony groups three colors that are evenly spaced from another and form a triangle on the color wheel.



17.0490, 6.0359, 4.8067



17.0490, -7.5971, 3.7390



17.0490, -0.0770, -8.4699

Complementary

The Complementary color scheme is a pair of colors which are on the opposite of each other on the color wheel.



17.0486, 6.0367, 4.8064



20.5558, -5.8991, -2.7533

Split Complementary

Split-complementary colors differ from the complementary color scheme. The scheme consists of three colors, the original color and two neighbors of the complement color.



17.0490, -4.0402, -7.5516



17.0486, 6.0367, 4.8064



17.0490, -8.1378, 0.1237

Square

The Square scheme is like the rectangle color scheme, but the four colors are evenly spaced on the color wheel.



17.0490, 6.0359, 4.8067



17.0490, -5.3427, 5.9970



17.0490, -6.8969, -4.1511



17.0490, 4.0263, -6.4245

Rectangle

The Rectangle color scheme consists of four colors that form a rectangle on the color wheel.



17.0486, 6.0367, 4.8064



17.0490, -0.3431, 6.8922



17.0490, -6.8969, -4.1511



17.0490, -1.4708, -8.5028

Sweetspot

The Sweet Spot groups the original color and five complimentary colors.



17.0490, 6.0359, 4.8067



27.8473, 1.1240, 3.1732



16.7533, 11.4332, -5.7841



14.0789, 0.6682, 1.6647



63.7533, -3.4017, 3.4638



15.6573, -0.8354, 0.8507

Same Dimension

The Same Dimension uses a secret algorithm to generate beautiful new colors.



17.0490, 6.0359, 4.8067



20.2615, 10.6271, 7.2684



20.4049, -0.2389, 7.7193



11.6880, -0.0208, 1.0268



17.0168, 23.7074, 10.9007



41.4554, 63.0942, 26.6492

Inverse Universe

The Inverse Universe completely reimagines the original color for something new.



20.5558, -5.8991, -2.7533



25.8280, -8.5754, -4.7866



16.7374, 0.0507, -8.4962



12.0443, -1.2115, 0.2632



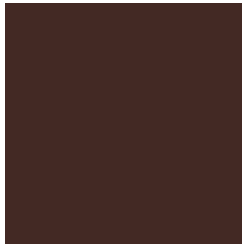
26.0493, -10.5347, -9.8180



64.3843, -25.2478, -25.9721

Previews

White Background



This preview shows how the HunterLab color 17.0486, 6.0367, 4.8064 looks on a white background.

Color Contrast Check

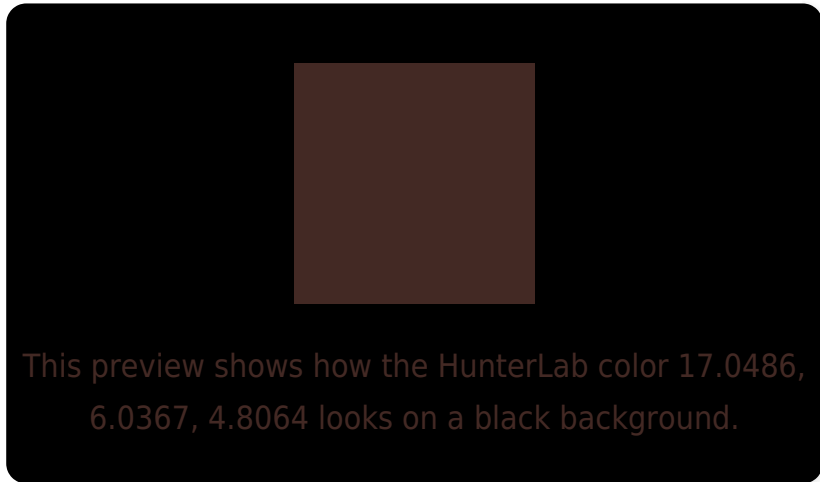
Large Text (above 18pt) WCAG AA ✓ Pass

Any Text WCAG AA ✓ Pass

Large Text (above 18pt) WCAG AAA ✓ Pass

Any Text WCAG AAA ✓ Pass

Black Background



Color Contrast Check

Large Text (above 18pt) WCAG AA × Fail

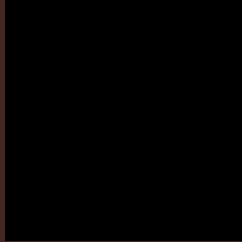
Any Text WCAG AA × Fail

Large Text (above 18pt) WCAG AAA × Fail

Any Text WCAG AAA × Fail

If you want to check with other color combinations, try the [Color Contrast Checker](#).

HunterLab 17.0486, 6.0367, 4.8064 Background



This preview shows how black text looks on a background with the HunterLab color 17.0486, 6.0367, 4.8064.

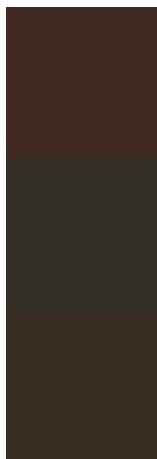


This preview shows how white text looks on a background with the HunterLab color 17.0486, 6.0367,

Color Blindness Simulation

Color vision deficiency is a very complex topic, and I could not describe the different causes any better than Wikipedia does, so if you want to learn more, you should check out their [article about color blindness](#).

Dichromacy



Original Color

17.0486, 6.0367, 4.8064

Protanopia

17.2168, -1.2200, 3.9775

Deuteranopia

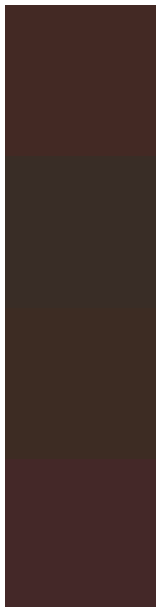
17.1616, 0.8348, 5.0960



Tritanopia

17.0908, 7.4683, 2.7333

Trichromacy



Original Color

17.0486, 6.0367, 4.8064

Protanomaly

16.9899, 1.5298, 4.0967

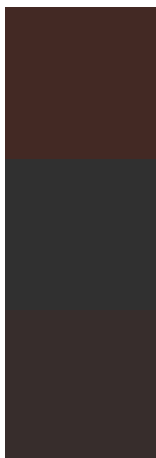
Deuteranomaly

17.0728, 2.8319, 5.0477

Tritanomaly

17.0286, 7.1576, 3.6286

Monochromacy



Original Color

17.0486, 6.0367, 4.8064

Achromatopsia

17.1921, -0.9173, 0.9341

Achromatomaly

16.9436, 1.6224, 2.1307

CSS Examples

Text

The CSS property to change the color of the text to HunterLab 17.0486, 6.0367, 4.8064 is called "color". The color property can be set on classes, ids or directly on the HTML element.

This example shows how text in the color `rgb(67, 41, 36)` looks like.

```
.text, #text, p{  
    color:rgb(67, 41, 36)  
}
```

If you want to add a text shadow in that color use the text-shadow property, you can generate a text shadow directly with our [CSS Text Shadow Generator](#).

Here you see how black text with a 4 pixel rgb(67, 41, 36) colored shadow looks like.

```
.shadow{ text-shadow: 4px 4px 2px rgb(67, 41, 36) }
```

Border

The CSS property to change the border of an element to HunterLab 17.0486, 6.0367, 4.8064 is called "border". The border property can be set on classes, ids or directly on the HTML element.

This example shows the color as border, it can be applied via the CSS property "border" or "border-color".

```
.border, #border, table{ border:4px solid rgb(67, 41, 36) }
```


If only the border color should be changed use the property border-color.

```
.border{ border-color:rgb(67, 41, 36) }
```

If you want to add a box shadow in that color use:

Here you see how a box with a 4 pixel rgb(67, 41, 36) colored shadow looks like.

```
.boxshadow{ -moz-box-shadow:4px 4px 4px  
4px rgb(67, 41, 36); -webkit-box-  
shadow:4px 4px 4px 4px rgb(67, 41, 36);  
box-shadow:4px 4px 4px 4px rgb(67, 41, 36)  
}
```

Background

The CSS property to change the background color of an element to HunterLab 17.0486, 6.0367, 4.8064 is called "background". The background property can be set on classes, ids or directly on the HTML element.

```
.background, #background, body{  
background: rgb(67, 41, 36) }
```

If only the background color should be changed can be used:

```
.background{ background-color: rgb(67, 41,  
36) }
```

This example shows the color as background, it is applied via the CSS property "background".

To optimize and compress your CSS code, you can use our [online CSS compressor and optimizer](#) based on csstidy. If you want to create a linear or radial gradient as background or border, check our [CSS Gradient Generator](#).

Hey! You found this booklet interesting? Support Converting Colors with the new Membership Option!

The pro membership hides all ads, plus gives you double the colors in the color bucket, and more awesome pro features!

[Learn more, Memberships starting at \\$2.50/m!](#)

**Follow me
on Twitter!**

@ConvertingColor