

Converting Colors

HunterLab(17.1196, 7.9732,
5.1545)

Have a look what the booklet for
HunterLab(17.1196, 7.9732, 5.1545)
contains.

HunterLab(17.0645, 8.0810, 5.1318)	3
<i>Conversions</i>	4
<i>Details</i>	6
<i>Harmonies</i>	12
<i>Previews</i>	24
<i>Color Blindness Simulation</i>	28
<i>CSS Examples</i>	31

Color

**HunterLab(17.0645, 8.0810,
5.1318)**

Conversions

Conversions Part 1

Format	Color
Hex	472723
RGB	71, 39, 35
RGB Percent	28%, 15%, 14%
CMY	0.7216, 0.8471, 0.8627
CMYK	0.00, 0.45, 0.51, 0.72
HSL	7°, 34%, 21%
HSV	7°, 51%, 28%
XYZ	3.6274, 2.9120, 1.9610
YIQ	48.1120, 20.3560, 5.5400

Conversions

Conversions Part 2

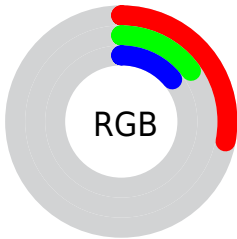
Format	Color
R_{YB}	71, 40, 35
Decimal	4663075
CIE _{Lab}	19.69, 14.51, 9.11
CIE _{LCh}	20, 17.133, 32.109
Yxy	2.9121, 0.4267, 0.3426
Android (android.graphics.Color)	4282853155 (0xFF472723)
YUV	48.1120, -6.4642, 20.0728
Hunter-Lab	17.0645, 8.0810, 5.1318

Details

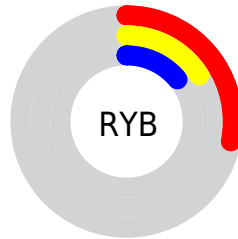
The HunterLab color **17.0645, 8.0810, 5.1318** is a dark color, and the websafe version is hex **663333**. A complement of this color would be **21.9689, -7.2654, -2.6783**, and the grayscale version is **17.2458, -0.9202, 0.9370**.

A 20% lighter version of the original color is **33.1212, 9.2252, 7.3290**, and **4.7096, 8.1119, 2.6825** is the 20% darker color. If you saturate the color by 10%, you get **15.7912, 10.1456, 5.8067**, and if you desaturate by 10%, it is **18.4613, 6.0645, 4.4168**.

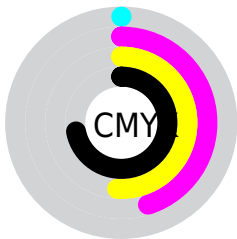
Distribution



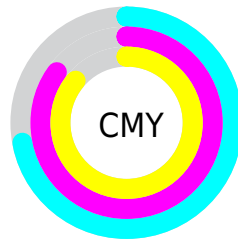
- Red (28%)
- Green (15%)
- Blue (14%)



- Red (28%)
- Yellow (16%)
- Blue (14%)



- Cyan (0%)
- Magenta (45%)
- Yellow (51%)
- Black (72%)



- Cyan (72%)
- Magenta (85%)
- Yellow (86%)

Brightness & Saturation Gradients

These gradients show how the HunterLab color 17.0645, 8.0810, 5.1318 changes by changing the brightness by 10 percent. The first figure shows a shift by +10% for each color and the second figure -10%.

Similar to the brightness gradients but the following saturation gradients show a change of the HunterLab color 17.0645, 8.0810, 5.1318 by changing the saturation by 10% instead.

■ 17.0645, 8.0810,
5.1318

■ 17.0645, 8.0810,
5.1318

■ 112.7862, 9.7692,
14.9384

■ 10.4212, 7.3464,
4.2729

■ 33.2629, 9.0906,
7.3595

0.0000, INF, NaN

0.0000, NaN, NaN

■ 42.6134, 9.4205,
8.4364

0.0000, NaN, NaN

■ 52.7057, 9.6568,
9.5067

0.0000, NaN, NaN

0.0000, NaN, NaN

■ 63.4887, 9.8115,
10.5776

0.0000, NaN, NaN

■ 74.9208, 9.8935,
11.6536

0.0000, NaN, NaN

■ 86.9670, 9.9101,

0.0000, NaN, NaN

12.7377

99.5974, 9.8671,
13.8321

17.0645, 8.0810,
5.1318

17.0645, 8.0810,
5.1318

15.7912, 10.1456,
5.8067

18.4613, 6.0645,
4.4168

14.6586, 12.2172,
6.4160

19.9638, 4.1218,
3.6782

13.6868, 14.2236,
6.9288

21.5582, 2.2606,
2.9278

12.8907, 16.0544,
7.3525

23.2324, 0.4808,
2.1726

12.2920, 17.4680,
7.8801

24.9766, -1.2222,
1.4170

■ 26.7825, -2.8555,
0.6629

■ 28.6433, -4.4267,
-0.0884

■ 30.5533, -5.9434,
-0.8369

■ 32.5078, -7.4126,
-1.5827

Harmonies

Analogous

The Analogous color harmony consists of three colors that are next to each other on the color wheel.



17.0649, 9.8718, 1.2641



17.0645, 8.0810, 5.1318



17.0649, 3.8538, 7.2250

Triad

The Triadic color harmony groups three colors that are evenly spaced from another and form a triangle on the color wheel.



17.0649, 8.0801, 5.1321



17.0649, -8.6476, 4.6974



17.0649, -0.5540, -11.0636

Complementary

The Complementary color scheme is a pair of colors which are on the opposite of each other on the color wheel.



17.0645, 8.0810, 5.1318



21.9689, -7.2654, -2.6783

Split Complementary

Split-complementary colors differ from the complementary color scheme. The scheme consists of three colors, the original color and two neighbors of the complement color.



17.0649, -5.2051, -9.3705



17.0645, 8.0810, 5.1318



17.0649, -9.5427, 0.5868

Square

The Square scheme is like the rectangle color scheme, but the four colors are evenly spaced on the color wheel.



17.0649, 8.0801, 5.1321



17.0649, -5.7550, 7.0299



17.0649, -8.3569, -4.7222



17.0649, 4.5409, -8.8490

Rectangle

The Rectangle color scheme consists of four colors that form a rectangle on the color wheel.



17.0645, 8.0810, 5.1318



17.0649, 0.4371, 7.7613



17.0649, -8.3569, -4.7222



17.0649, -2.2194, -10.9317

Sweetspot

The Sweet Spot groups the original color and five complimentary colors.



17.0649, 8.0801, 5.1321



29.1354, 1.7414, 3.3045



17.1806, 13.8272, -7.7145



14.6226, 0.9888, 1.7161



64.8100, -3.4581, 3.5212



16.4960, -0.8802, 0.8963

Same Dimension

The Same Dimension uses a secret algorithm to generate beautiful new colors.



17.0649, 8.0801, 5.1321



20.1222, 13.9127, 7.7715



20.8514, 0.7087, 8.3395



12.3948, 0.0609, 1.0577



17.0842, 25.6374, 10.9760



41.2648, 66.2758, 26.5875

Inverse Universe

The Inverse Universe completely reimagines the original color for something new.



21.9689, -7.2654, -2.6783



27.8004, -10.5265, -4.5502



17.4428, -0.3812, -9.5214



12.8635, -1.3692, 0.3197



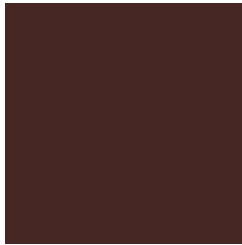
28.2026, -12.6712, -7.8975



69.0315, -30.5271, -20.3841

Previews

White Background



This preview shows how the HunterLab color 17.0645, 8.0810, 5.1318 looks on a white background.

Color Contrast Check

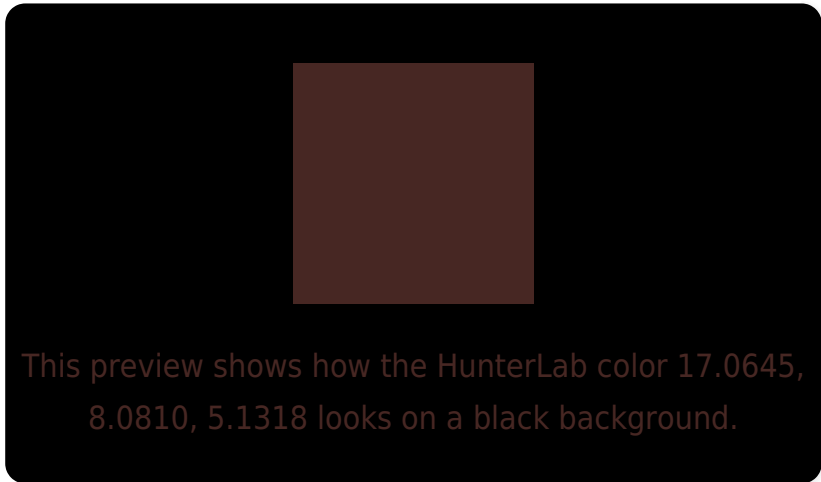
Large Text (above 18pt) WCAG AA ✓ Pass

Any Text WCAG AA ✓ Pass

Large Text (above 18pt) WCAG AAA ✓ Pass

Any Text WCAG AAA ✓ Pass

Black Background



Color Contrast Check

Large Text (above 18pt) WCAG AA × Fail

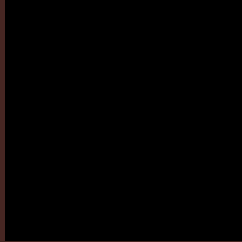
Any Text WCAG AA × Fail

Large Text (above 18pt) WCAG AAA × Fail

Any Text WCAG AAA × Fail

If you want to check with other color combinations, try the [Color Contrast Checker](#).

HunterLab 17.0645, 8.0810, 5.1318 Background



This preview shows how black text looks on a background with the HunterLab color 17.0645, 8.0810, 5.1318.

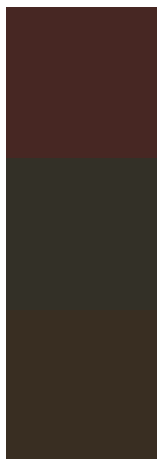


This preview shows how white text looks on a background with the HunterLab color 17.0645, 8.0810,

Color Blindness Simulation

Color vision deficiency is a very complex topic, and I could not describe the different causes any better than Wikipedia does, so if you want to learn more, you should check out their [article about color blindness](#).

Dichromacy



Original Color

17.0645, 8.0810, 5.1318

Protanopia

17.2168, -1.2200, 3.9775

Deuteranopia

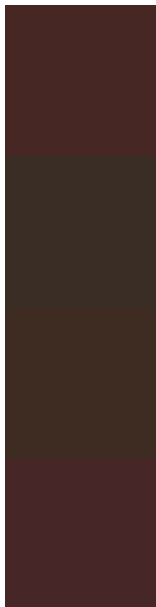
17.1445, 0.7430, 5.3437



Tritanopia

16.9880, 9.0633, 3.3049

Trichromacy



Original Color

17.0645, 8.0810, 5.1318

Protanomaly

17.0770, 1.8197, 4.1881

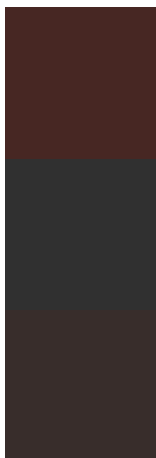
Deuteranomaly

16.9333, 3.4582, 5.1959

Tritanomaly

16.9479, 8.8668, 3.8835

Monochromacy



Original Color

17.0645, 8.0810, 5.1318

Achromatopsia

17.1921, -0.9173, 0.9341

Achromatomaly

17.0057, 1.7852, 2.5418

CSS Examples

Text

The CSS property to change the color of the text to HunterLab 17.0645, 8.0810, 5.1318 is called "color". The color property can be set on classes, ids or directly on the HTML element.

This example shows how text in the color `rgb(71, 39, 35)` looks like.

```
.text, #text, p{  
    color:rgb(71, 39, 35)  
}
```

If you want to add a text shadow in that color use the text-shadow property, you can generate a text shadow directly with our [CSS Text Shadow Generator](#).

Here you see how black text with a 4 pixel rgb(71, 39, 35) colored shadow looks like.

```
.shadow{ text-shadow: 4px 4px 2px rgb(71, 39, 35) }
```

Border

The CSS property to change the border of an element to HunterLab 17.0645, 8.0810, 5.1318 is called "border".

The border property can be set on classes, ids or directly on the HTML element.

This example shows the color as border, it can be applied via the CSS property "border" or "border-color".

```
.border, #border, table{ border:4px solid rgb(71, 39, 35) }
```


If only the border color should be changed use the property `border-color`.

```
.border{ border-color:rgb(71, 39, 35) }
```

If you want to add a box shadow in that color use:

Here you see how a box with a 4 pixel `rgb(71, 39, 35)` colored shadow looks like.

```
.boxshadow{ -moz-box-shadow:4px 4px 4px  
4px rgb(71, 39, 35); -webkit-box-  
shadow:4px 4px 4px 4px rgb(71, 39, 35);  
box-shadow:4px 4px 4px 4px rgb(71, 39, 35)  
}
```

Background

The CSS property to change the background color of an element to HunterLab 17.0645, 8.0810, 5.1318 is called "background". The background property can be set on classes, ids or directly on the HTML element.

```
.background, #background, body{  
background: rgb(71, 39, 35) }
```

If only the background color should be changed can be used:

```
.background{ background-color: rgb(71, 39,  
35) }
```

This example shows the color as background, it is applied via the CSS property "background".

To optimize and compress your CSS code, you can use our [online CSS compressor and optimizer](#) based on csstidy. If you want to create a linear or radial gradient as background or border, check our [CSS Gradient Generator](#).

Hey! You found this booklet interesting? Support Converting Colors with the new Membership Option!

The pro membership hides all ads, plus gives you double the colors in the color bucket, and more awesome pro features!

[Learn more, Memberships starting at \\$2.50/m!](#)

**Follow me
on Twitter!**

@ConvertingColor