

Converting Colors

HunterLab(17.2080, 5.7677,
5.3461)

Have a look what the booklet for
HunterLab(17.2080, 5.7677, 5.3461)
contains.

HunterLab(17.2353, 5.5279, 5.2471)	3
<i>Conversions</i>	4
<i>Details</i>	6
<i>Harmonies</i>	12
<i>Previews</i>	24
<i>Color Blindness Simulation</i>	28
<i>CSS Examples</i>	31

Color

**HunterLab(17.2353, 5.5279,
5.2471)**

Conversions

Conversions Part 1

Format	Color
Hex	432A23
RGB	67, 42, 35
RGB Percent	26%, 16%, 14%
CMY	0.7373, 0.8353, 0.8627
CMYK	0.00, 0.37, 0.48, 0.74
HSL	13°, 31%, 20%
HSV	13°, 48%, 26%
XYZ	3.4461, 2.9706, 1.9818
YIQ	48.6770, 17.1470, 3.1230

Conversions

Conversions Part 2

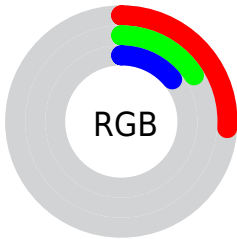
Format	Color
RYB	67, 44, 35
Decimal	4401699
CIELab	19.93, 10.63, 9.33
CIElCh	20, 14.148, 41.266
Yxy	2.9707, 0.4103, 0.3537
Android (android.graphics.Color)	4282591779 (0xFF432A23)
YUV	48.6770, -6.7428, 16.0693
Hunter-Lab	17.2353, 5.5279, 5.2471

Details

The HunterLab color **17.2353, 5.5279, 5.2471** is a dark color, and the websafe version is hex **333333**. A complement of this color would be **19.9853, -5.3033, -3.5316**, and the grayscale version is **17.4356, -0.9303, 0.9473**.

A 20% lighter version of the original color is **33.5514, 5.6779, 7.7018**, and **4.1300, 7.0728, 2.6687** is the 20% darker color. If you saturate the color by 10%, you get **16.0851, 7.1659, 5.9177**, and if you desaturate by 10%, it is **18.4669, 3.9619, 4.5057**.

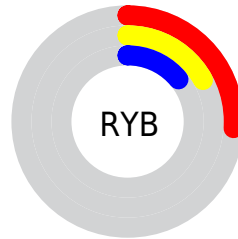
Distribution



Red (26%)

Green (16%)

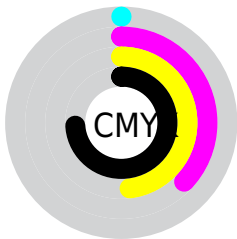
Blue (14%)



Red (26%)

Yellow (17%)

Blue (14%)

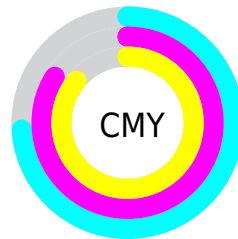


Cyan (0%)

Magenta (37%)

Yellow (48%)

Black (74%)



Cyan (74%)

Magenta (84%)

Yellow (86%)

Brightness & Saturation Gradients

These gradients show how the HunterLab color 17.2353, 5.5279, 5.2471 changes by changing the brightness by 10 percent. The first figure shows a shift by +10% for each color and the second figure -10%.

Similar to the brightness gradients but the following saturation gradients show a change of the HunterLab color 17.2353, 5.5279, 5.2471 by changing the saturation by 10% instead.

■ 17.2353, 5.5279,
5.2471

■ 17.2353, 5.5279,
5.2471

■ 113.1064, 5.4603,
15.1726

■ 10.5662, 5.0559,
4.3432

■ 33.4762, 6.0650,
7.5088

0.0000, INF, NaN

0.0000, NaN, NaN

■ 42.8450, 6.1818,
8.6003

0.0000, NaN, NaN

■ 52.9542, 6.2174,
9.6842

0.0000, NaN, NaN

0.0000, NaN, NaN

■ 63.7531, 6.1819,
10.7677

0.0000, NaN, NaN

■ 75.2001, 6.0831,
11.8556

0.0000, NaN, NaN

■ 87.2605, 5.9267,

0.0000, NaN, NaN

12.9509

99.9045, 5.7178,
14.0561

17.2353, 5.5279,
5.2471

17.2353, 5.5279,
5.2471

16.0851, 7.1659,
5.9177

18.4669, 3.9619,
4.5057

15.0259, 8.8652,
6.4981

19.7690, 2.4748,
3.7079

14.0700, 10.5996,
6.9666

21.1339, 1.0646,
2.8658

13.2288, 12.3239,
7.3119

22.5545, -0.2728,
1.9883

12.4988, 13.9129,
7.7409

24.0247, -1.5431,
1.0821

■ 12.3507, 14.2401,
7.8597

■ 25.5395, -2.7527,
0.1522

■ 27.0945, -3.9079,
-0.7975

■ 28.6862, -5.0147,
-1.7643

■ 30.3113, -6.0787,
-2.7460

Harmonies

Analogous

The Analogous color harmony consists of three colors that are next to each other on the color wheel.



17.2357, 7.6653, 2.3622



17.2353, 5.5279, 5.2471



17.2357, 1.7299, 6.7094

Triad

The Triadic color harmony groups three colors that are evenly spaced from another and form a triangle on the color wheel.



17.2357, 5.5271, 5.2474



17.2357, -7.8731, 3.2117



17.2357, 0.6734, -8.3393

Complementary

The Complementary color scheme is a pair of colors which are on the opposite of each other on the color wheel.



17.2353, 5.5279, 5.2471



19.9853, -5.3033, -3.5316

Split Complementary

Split-complementary colors differ from the complementary color scheme. The scheme consists of three colors, the original color and two neighbors of the complement color.



17.2357, -3.4200, -7.9567



17.2353, 5.5279, 5.2471



17.2357, -8.0978, -0.6188

Square

The Square scheme is like the rectangle color scheme, but the four colors are evenly spaced on the color wheel.



17.2357, 5.5271, 5.2474



17.2357, -5.8947, 5.7415



17.2357, -6.5408, -4.8861



17.2357, 4.6907, -5.8329

Rectangle

The Rectangle color scheme consists of four colors that form a rectangle on the color wheel.



17.2353, 5.5279, 5.2471



17.2357, -1.0973, 6.9526



17.2357, -6.5408, -4.8861



17.2357, -0.7431, -8.5574

Sweetspot

The Sweet Spot groups the original color and five complimentary colors.



17.2357, 5.5271, 5.2474



28.0217, 0.8189, 3.3624



16.4994, 11.5132, -5.0267



14.1732, 0.5027, 1.7666



63.7533, -3.4017, 3.4638



15.6573, -0.8354, 0.8507

Same Dimension

The Same Dimension uses a secret algorithm to generate beautiful new colors.



17.2357, 5.5271, 5.2474



20.6610, 9.6470, 7.8108



20.8183, -1.0396, 8.2813



11.7298, -0.0922, 1.0733



17.5490, 22.0896, 11.2003



42.5632, 59.5769, 27.2702

Inverse Universe

The Inverse Universe completely reimagines the original color for something new.



19.9853, -5.3033, -3.5316



24.9701, -7.5419, -6.0031



16.0279, 1.0121, -9.7493



12.0010, -1.1414, 0.2119



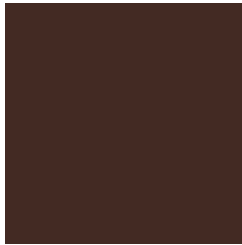
24.4716, -8.4208, -12.4092



60.1504, -19.5082, -33.0702

Previews

White Background



This preview shows how the HunterLab color 17.2353, 5.5279, 5.2471 looks on a white background.

Color Contrast Check

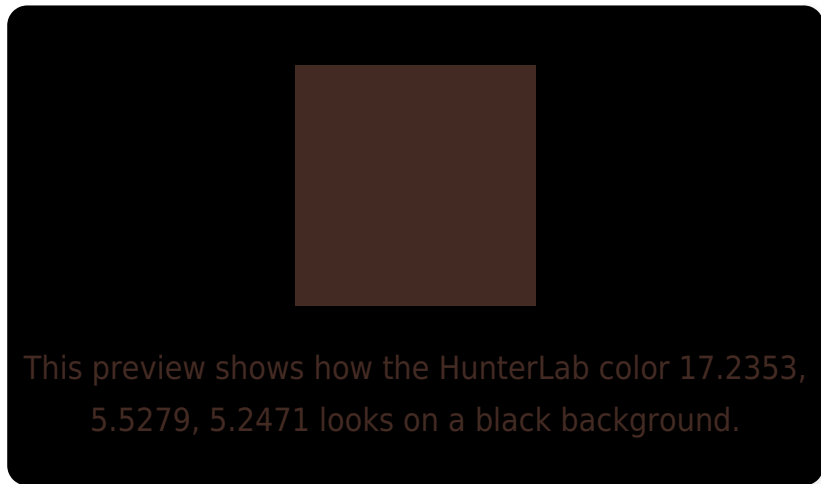
Large Text (above 18pt) WCAG AA ✓ Pass

Any Text WCAG AA ✓ Pass

Large Text (above 18pt) WCAG AAA ✓ Pass

Any Text WCAG AAA ✓ Pass

Black Background



Color Contrast Check

Large Text (above 18pt) WCAG AA × Fail

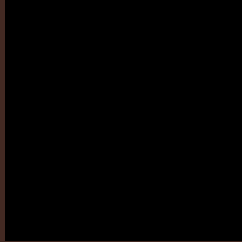
Any Text WCAG AA × Fail

Large Text (above 18pt) WCAG AAA × Fail

Any Text WCAG AAA × Fail

If you want to check with other color combinations, try the [Color Contrast Checker](#).

HunterLab 17.2353, 5.5279, 5.2471 Background



This preview shows how black text looks on a background with the HunterLab color 17.2353, 5.5279, 5.2471.

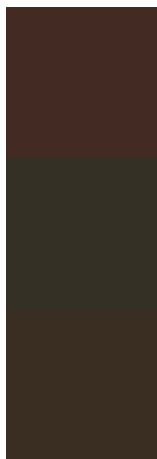


This preview shows how white text looks on a background with the HunterLab color 17.2353, 5.5279,

Color Blindness Simulation

Color vision deficiency is a very complex topic, and I could not describe the different causes any better than Wikipedia does, so if you want to learn more, you should check out their [article about color blindness](#).

Dichromacy



Original Color

17.2353, 5.5279, 5.2471

Protanopia

17.2740, -1.0584, 4.3317

Deuteranopia

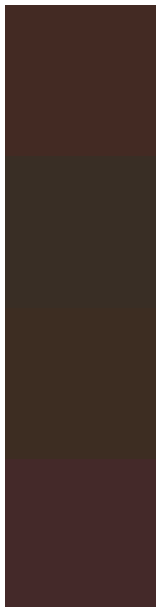
17.2309, 1.0343, 5.4283



Tritanopia

17.3109, 7.1515, 2.6307

Trichromacy



Original Color

17.2353, 5.5279, 5.2471

Protanomaly

17.1971, 1.0259, 4.5804

Deuteranomaly

17.2753, 2.3325, 5.4918

Tritanomaly

17.2479, 6.8354, 3.5365

Monochromacy



Original Color

17.2353, 5.5279, 5.2471

Achromatopsia

17.5253, -0.9351, 0.9522

Achromatomaly

17.2528, 1.4927, 2.4684

CSS Examples

Text

The CSS property to change the color of the text to HunterLab 17.2353, 5.5279, 5.2471 is called "color". The color property can be set on classes, ids or directly on the HTML element.

This example shows how text in the color `rgb(67, 42, 35)` looks like.

```
.text, #text, p{  
    color:rgb(67, 42, 35)  
}
```

If you want to add a text shadow in that color use the text-shadow property, you can generate a text shadow directly with our [CSS Text Shadow Generator](#).

Here you see how black text with a 4 pixel rgb(67, 42, 35) colored shadow looks like.

```
.shadow{ text-shadow: 4px 4px 2px rgb(67, 42, 35) }
```

Border

The CSS property to change the border of an element to HunterLab 17.2353, 5.5279, 5.2471 is called "border".

The border property can be set on classes, ids or directly on the HTML element.

This example shows the color as border, it can be applied via the CSS property "border" or "border-color".

```
.border, #border, table{ border:4px solid rgb(67, 42, 35) }
```


If only the border color should be changed use the property `border-color`.

```
.border{ border-color:rgb(67, 42, 35) }
```

If you want to add a box shadow in that color use:

Here you see how a box with a 4 pixel `rgb(67, 42, 35)` colored shadow looks like.

```
.boxshadow{ -moz-box-shadow:4px 4px 4px  
4px rgb(67, 42, 35); -webkit-box-  
shadow:4px 4px 4px 4px rgb(67, 42, 35);  
box-shadow:4px 4px 4px 4px rgb(67, 42, 35)  
}
```

Background

The CSS property to change the background color of an element to HunterLab 17.2353, 5.5279, 5.2471 is called "background". The background property can be set on classes, ids or directly on the HTML element.

```
.background, #background, body{  
background: rgb(67, 42, 35) }
```

If only the background color should be changed can be used:

```
.background{ background-color: rgb(67, 42,  
35) }
```

This example shows the color as background, it is applied via the CSS property "background".

To optimize and compress your CSS code, you can use our [online CSS compressor and optimizer](#) based on csstidy. If you want to create a linear or radial gradient as background or border, check our [CSS Gradient Generator](#).

Hey! You found this booklet interesting? Support Converting Colors with the new Membership Option!

The pro membership hides all ads, plus gives you double the colors in the color bucket, and more awesome pro features!

[Learn more, Memberships starting at \\$2.50/m!](#)

**Follow me
on Twitter!**

@ConvertingColor