

Converting Colors

HunterLab(17.2889, 3.8632,
2.6019)

Have a look what the booklet for
HunterLab(17.2889, 3.8632, 2.6019)
contains.

HunterLab(17.2491, 3.7544, 2.5039)	3
<i>Conversions</i>	4
<i>Details</i>	6
<i>Harmonies</i>	12
<i>Previews</i>	24
<i>Color Blindness Simulation</i>	28
<i>CSS Examples</i>	31

Color

**HunterLab(17.2491, 3.7544,
2.5039)**

Conversions

Conversions Part 1

Format	Color
Hex	3D2C2C
RGB	61, 44, 44
RGB Percent	24%, 17%, 17%
CMY	0.7608, 0.8274, 0.8274
CMYK	0.00, 0.28, 0.28, 0.76
HSL	0°, 16%, 21%
HSV	0°, 28%, 24%
XYZ	3.2798, 2.9753, 2.7843
YIQ	49.0830, 10.1320, 3.6040

Conversions

Conversions Part 2

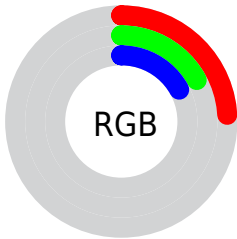
Format	Color
R_{YB}	61, 44, 44
Decimal	4009004
CIE Lab	19.95, 7.85, 3.05
CIE LCh	20, 8.419, 21.252
Yxy	2.9755, 0.3628, 0.3292
Android (android.graphics.Color)	4282199084 (0xFF3D2C2C)
YUV	49.0830, -2.5059, 10.4512
Hunter-Lab	17.2491, 3.7544, 2.5039

Details

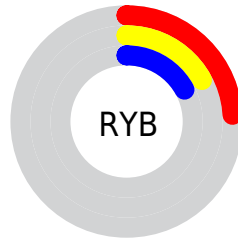
The HunterLab color **17.2491, 3.7544, 2.5039** is a dark color, and the websafe version is hex **333333**. A complement of this color would be **20.5177, -5.0242, -0.2027**, and the grayscale version is **17.5590, -0.9369, 0.9540**.

A 20% lighter version of the original color is **33.5929, 3.7327, 4.0842**, and **3.5861, 6.1412, 2.3172** is the 20% darker color. If you saturate the color by 10%, you get **15.8473, 5.6383, 3.0347**, and if you desaturate by 10%, it is **18.7434, 1.9338, 2.0020**.

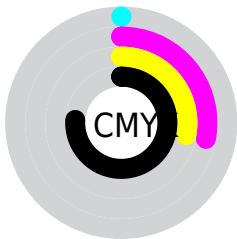
Distribution



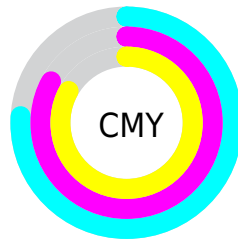
- Red (24%)
- Green (17%)
- Blue (17%)



- Red (24%)
- Yellow (17%)
- Blue (17%)



- Cyan (0%)
- Magenta (28%)
- Yellow (28%)
- Black (76%)



- Cyan (76%)
- Magenta (83%)
- Yellow (83%)

Brightness & Saturation Gradients

These gradients show how the HunterLab color 17.2491, 3.7544, 2.5039 changes by changing the brightness by 10 percent. The first figure shows a shift by +10% for each color and the second figure -10%.

Similar to the brightness gradients but the following saturation gradients show a change of the HunterLab color 17.2491, 3.7544, 2.5039 by changing the saturation by 10% instead.

■ 17.2491, 3.7544,
2.5039

■ 17.2491, 3.7544,
2.5039

■ 113.1322, 2.4008,
9.1941

■ 10.5779, 3.4836,
1.8801

■ 33.4934, 3.9403,
3.8110

0.0000, INF, NaN

0.0000, NaN, NaN

■ 42.8636, 3.9005,
4.5019

0.0000, NaN, NaN

■ 52.9742, 3.7894,
5.2192

0.0000, NaN, NaN

0.0000, NaN, NaN

■ 63.7744, 3.6153,
5.9629

0.0000, NaN, NaN

■ 75.2227, 3.3849,
6.7327

0.0000, NaN, NaN

■ 87.2842, 3.1030,

0.0000, NaN, NaN

7.5282

99.9293, 2.7739,
8.3488

17.2491, 3.7544,
2.5039

17.2491, 3.7544,
2.5039

15.8473, 5.6383,
3.0347

18.7434, 1.9338,
2.0020

14.5524, 7.5741,
3.5900

20.3161, 0.1811,
1.5280

13.3830, 9.5300,
4.1612

21.9573, -1.5075,
1.0804

12.3597, 11.4490,
4.7304

23.6583, -3.1378,
0.6566

11.5038, 13.2423,
5.2696

25.4123, -4.7167,
0.2539

■ 10.8123, 14.8458,
5.7571

■ 27.2134, -6.2509,
-0.1304

■ 10.1157, 16.6320,
6.3056

■ 29.0569, -7.7469,
-0.4989

■ 9.9609, 17.0559,
6.4365

■ 30.9390, -9.2105,
-0.8537

■ 32.8564, -10.6465,
-1.1968

Harmonies

Analogous

The Analogous color harmony consists of three colors that are next to each other on the color wheel.



17.2495, 4.0515, 0.2344



17.2491, 3.7544, 2.5039



17.2495, 2.1672, 4.1165

Triad

The Triadic color harmony groups three colors that are evenly spaced from another and form a triangle on the color wheel.



17.2495, 3.7538, 2.5042



17.2495, -4.4864, 3.5446



17.2495, -1.6409, -4.1755

Complementary

The Complementary color scheme is a pair of colors which are on the opposite of each other on the color wheel.



17.2491, 3.7544, 2.5039



20.5177, -5.0242, -0.2027

Split Complementary

Split-complementary colors differ from the complementary color scheme. The scheme consists of three colors, the original color and two neighbors of the complement color.



17.2495, -3.8068, -2.9885



17.2491, 3.7544, 2.5039



17.2495, -5.3877, 1.6150

Square

The Square scheme is like the rectangle color scheme, but the four colors are evenly spaced on the color wheel.



17.2495, 3.7538, 2.5042



17.2495, -2.6167, 4.6555



17.2495, -5.1461, -0.7883



17.2495, 0.8421, -3.8486

Rectangle

The Rectangle color scheme consists of four colors that form a rectangle on the color wheel.



17.2491, 3.7544, 2.5039



17.2495, 0.6389, 4.7071



17.2495, -5.1461, -0.7883



17.2495, -2.4280, -3.9348

Sweetspot

The Sweet Spot groups the original color and five complimentary colors.



17.2495, 3.7538, 2.5042



26.2127, 0.3435, 2.0082



17.6930, 6.0375, -3.7864



13.8019, 0.2763, 1.0894



62.6995, -3.3455, 3.4066



14.8260, -0.7911, 0.8055

Same Dimension

The Same Dimension uses a secret algorithm to generate beautiful new colors.



17.2495, 3.7538, 2.5042



21.1286, 6.4652, 3.6933



19.1699, 0.2492, 4.4467



10.8428, 0.1493, 0.8331



15.4867, 26.5190, 10.0071



39.3780, 67.4337, 25.4451

Inverse Universe

The Inverse Universe completely reimagines the original color for something new.



20.5177, -5.0242, -0.2027



26.3060, -7.5015, -0.6153



18.3665, -1.7073, -2.9645



11.3863, -1.3006, 0.3863



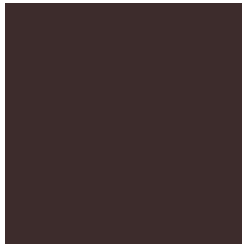
29.8010, -15.7977, -3.1460



75.7761, -40.1691, -7.9999

Previews

White Background



This preview shows how the HunterLab color 17.2491, 3.7544, 2.5039 looks on a white background.

Color Contrast Check

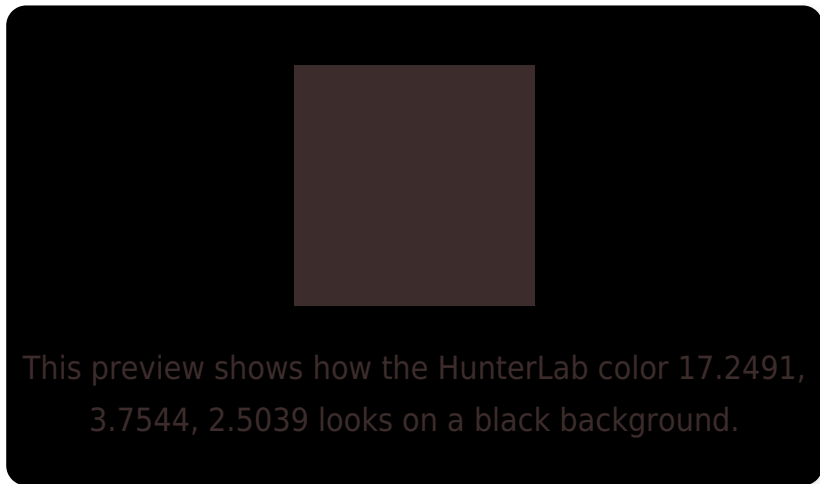
Large Text (above 18pt) WCAG AA ✓ Pass

Any Text WCAG AA ✓ Pass

Large Text (above 18pt) WCAG AAA ✓ Pass

Any Text WCAG AAA ✓ Pass

Black Background



Color Contrast Check

Large Text (above 18pt) WCAG AA × Fail

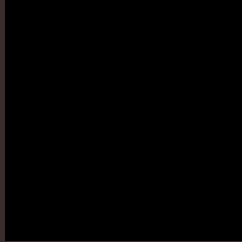
Any Text WCAG AA × Fail

Large Text (above 18pt) WCAG AAA × Fail

Any Text WCAG AAA × Fail

If you want to check with other color combinations, try the [Color Contrast Checker](#).

HunterLab 17.2491, 3.7544, 2.5039 Background



This preview shows how black text looks on a background with the HunterLab color 17.2491, 3.7544, 2.5039.

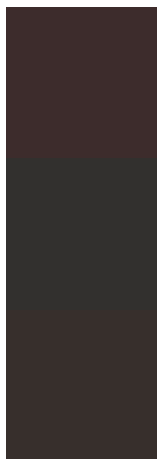


This preview shows how white text looks on a background with the HunterLab color 17.2491, 3.7544,

Color Blindness Simulation

Color vision deficiency is a very complex topic, and I could not describe the different causes any better than Wikipedia does, so if you want to learn more, you should check out their [article about color blindness](#).

Dichromacy



Original Color

17.2491, 3.7544, 2.5039

Protanopia

17.2895, -0.6728, 1.7781

Deuteranopia

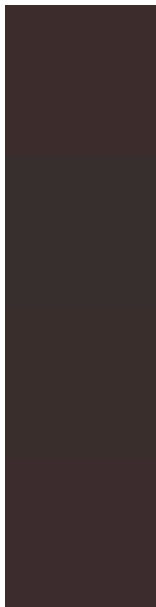
17.3986, 0.8098, 2.6149



Tritanopia

17.3168, 4.1060, 1.5345

Trichromacy



Original Color

17.2491, 3.7544, 2.5039

Protanomaly

17.3400, 0.6556, 2.2076

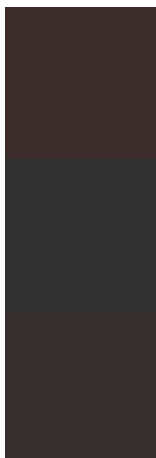
Deuteranomaly

17.3369, 1.7730, 2.5649

Tritanomaly

17.2937, 3.9864, 1.8644

Monochromacy



Original Color

17.2491, 3.7544, 2.5039

Achromatopsia

17.5253, -0.9351, 0.9522

Achromatomaly

17.3065, 0.6331, 1.4620

CSS Examples

Text

The CSS property to change the color of the text to HunterLab 17.2491, 3.7544, 2.5039 is called "color". The color property can be set on classes, ids or directly on the HTML element.

This example shows how text in the color `rgb(61, 44, 44)` looks like.

```
.text, #text, p{  
    color:rgb(61, 44, 44)  
}
```

If you want to add a text shadow in that color use the text-shadow property, you can generate a text shadow directly with our [CSS Text Shadow Generator](#).

Here you see how black text with a 4 pixel rgb(61, 44, 44) colored shadow looks like.

```
.shadow{ text-shadow: 4px 4px 2px rgb(61, 44, 44) }
```

Border

The CSS property to change the border of an element to HunterLab 17.2491, 3.7544, 2.5039 is called "border". The border property can be set on classes, ids or directly on the HTML element.

This example shows the color as border, it can be applied via the CSS property "border" or "border-color".

```
.border, #border, table{ border:4px solid rgb(61, 44, 44) }
```


If only the border color should be changed use the property `border-color`.

```
.border{ border-color:rgb(61, 44, 44) }
```

If you want to add a box shadow in that color use:

Here you see how a box with a 4 pixel `rgb(61, 44, 44)` colored shadow looks like.

```
.boxshadow{ -moz-box-shadow:4px 4px 4px  
4px rgb(61, 44, 44); -webkit-box-  
shadow:4px 4px 4px 4px rgb(61, 44, 44);  
box-shadow:4px 4px 4px 4px rgb(61, 44, 44)  
}
```

Background

The CSS property to change the background color of an element to HunterLab 17.2491, 3.7544, 2.5039 is called "background". The background property can be set on classes, ids or directly on the HTML element.

```
.background, #background, body{  
background: rgb(61, 44, 44) }
```

If only the background color should be changed can be used:

```
.background{ background-color: rgb(61, 44,  
44) }
```

This example shows the color as background, it is applied via the CSS property "background".

To optimize and compress your CSS code, you can use our [online CSS compressor and optimizer](#) based on csstidy. If you want to create a linear or radial gradient as background or border, check our [CSS Gradient Generator](#).

Hey! You found this booklet interesting? Support Converting Colors with the new Membership Option!

The pro membership hides all ads, plus gives you double the colors in the color bucket, and more awesome pro features!

[Learn more, Memberships starting at \\$2.50/m!](#)

**Follow me
on Twitter!**

@ConvertingColor