

Converting Colors

HunterLab(17.2889, 4.1445,
4.2777)

Have a look what the booklet for
HunterLab(17.2889, 4.1445, 4.2777)
contains.

HunterLab(17.4294, 4.1270, 4.2827)	3
<i>Conversions</i>	4
<i>Details</i>	6
<i>Harmonies</i>	12
<i>Previews</i>	24
<i>Color Blindness Simulation</i>	28
<i>CSS Examples</i>	31

Color

**HunterLab(17.4294, 4.1270,
4.2827)**

Conversions

Conversions Part 1

Format	Color
Hex	402C27
RGB	64, 44, 39
RGB Percent	25%, 17%, 15%
CMY	0.7490, 0.8274, 0.8471
CMYK	0.00, 0.31, 0.39, 0.75
HSL	12°, 24%, 20%
HSV	12°, 39%, 25%
XYZ	3.3812, 3.0378, 2.3276
YIQ	49.4100, 13.5250, 2.6850

Conversions

Conversions Part 2

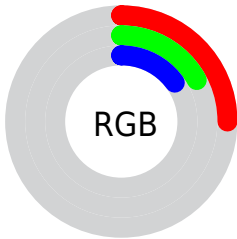
Format	Color
RYB	64, 45, 39
Decimal	4205607
CIELab	20.20, 8.43, 6.90
CIELCh	20, 10.893, 39.294
Yxy	3.0380, 0.3866, 0.3473
Android (android.graphics.Color)	4282395687 (0xFF402C27)
YUV	49.4100, -5.1321, 12.7954
Hunter-Lab	17.4294, 4.1270, 4.2827

Details

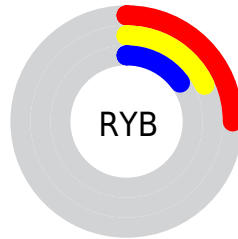
The HunterLab color **17.4294, 4.1270, 4.2827** is a dark color, and the websafe version is hex **333333**. A complement of this color would be **19.8225, -4.7386, -2.3765**, and the grayscale version is **17.6759, -0.9431, 0.9604**.

A 20% lighter version of the original color is **33.8572, 4.3658, 6.2511**, and **3.8565, 6.6043, 2.4919** is the 20% darker color. If you saturate the color by 10%, you get **16.2508, 5.6662, 4.9698**, and if you desaturate by 10%, it is **18.6798, 2.6587, 3.5482**.

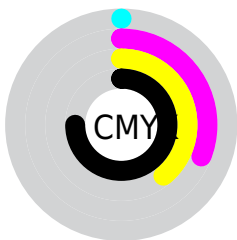
Distribution



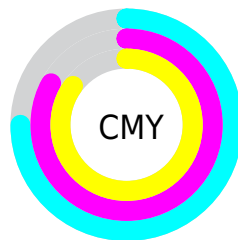
- Red (25%)
- Green (17%)
- Blue (15%)



- Red (25%)
- Yellow (18%)
- Blue (15%)



- Cyan (0%)
- Magenta (31%)
- Yellow (39%)
- Black (75%)



- Cyan (75%)
- Magenta (83%)
- Yellow (85%)

Brightness & Saturation Gradients

These gradients show how the HunterLab color 17.4294, 4.1270, 4.2827 changes by changing the brightness by 10 percent. The first figure shows a shift by +10% for each color and the second figure -10%.

Similar to the brightness gradients but the following saturation gradients show a change of the HunterLab color 17.4294, 4.1270, 4.2827 by changing the saturation by 10% instead.

■ 17.4294, 4.1270,
4.2827

■ 17.4294, 4.1270,
4.2827

■ 113.4693, 3.0295,
12.9254

■ 10.7312, 3.8168,
3.3866

■ 33.7182, 4.3822,
6.1617

■ 1.4707, 24.8984,
1.0295

■ 43.1077, 4.3735,
7.0939

0.0000, NaN, NaN

0.0000, NaN, NaN

■ 53.2361, 4.2916,
8.0325

0.0000, NaN, NaN

■ 64.0529, 4.1452,
8.9818

0.0000, NaN, NaN

■ 75.5169, 3.9411,
9.9443

0.0000, NaN, NaN

0.0000, NaN, NaN

■ 87.5934, 3.6844,

100.2528, 3.3794,
11.9152

17.4294, 4.1270,
4.2827

17.4294, 4.1270,
4.2827

16.2508, 5.6662,
4.9698

18.6798, 2.6587,
3.5482

15.1526, 7.2724,
5.5942

19.9924, 1.2636,
2.7763

14.1461, 8.9292,
6.1381

21.3604, -0.0622,
1.9756

13.2434, 10.6077,
6.5803

22.7777, -1.3240,
1.1521

12.4545, 12.2523,
6.9319

24.2392, -2.5277,
0.3102

■ 11.7749, 13.7336,
7.4092

■ 25.7404, -3.6793,
-0.5470

■ 11.7169, 13.8612,
7.4625

■ 27.2778, -4.7847,
-1.4172

■ 28.8481, -5.8492,
-2.2986

■ 30.4487, -6.8776,
-3.1899

Harmonies

Analogous

The Analogous color harmony consists of three colors that are next to each other on the color wheel.



17.4298, 5.6126, 1.8738



17.4294, 4.1270, 4.2827



17.4298, 1.3136, 5.6094

Triad

The Triadic color harmony groups three colors that are evenly spaced from another and form a triangle on the color wheel.



17.4298, 4.1263, 4.2830



17.4298, -6.3547, 2.9061



17.4298, 0.0807, -5.9252

Complementary

The Complementary color scheme is a pair of colors which are on the opposite of each other on the color wheel.



17.4294, 4.1270, 4.2827



19.8225, -4.7386, -2.3765

Split Complementary

Split-complementary colors differ from the complementary color scheme. The scheme consists of three colors, the original color and two neighbors of the complement color.



17.4298, -3.0673, -5.5117



17.4294, 4.1270, 4.2827



17.4298, -6.6321, -0.0299

Square

The Square scheme is like the rectangle color scheme, but the four colors are evenly spaced on the color wheel.



17.4298, 4.1263, 4.2830



17.4298, -4.6827, 4.9205



17.4298, -5.4701, -3.2104



17.4298, 3.1677, -4.2549

Rectangle

The Rectangle color scheme consists of four colors that form a rectangle on the color wheel.



17.4294, 4.1270, 4.2827



17.4298, -0.8546, 5.8720



17.4298, -5.4701, -3.2104



17.4298, -1.0072, -6.0311

Sweetspot

The Sweet Spot groups the original color and five complimentary colors.



17.4298, 4.1263, 4.2830



27.5058, 0.5156, 2.9733



16.9022, 8.7496, -3.9462



14.4036, 0.3030, 1.5805



63.7533, -3.4017, 3.4638



15.6573, -0.8354, 0.8507

Same Dimension

The Same Dimension uses a secret algorithm to generate beautiful new colors.



17.4298, 4.1263, 4.2830



21.4011, 7.4755, 6.5517



20.2819, -1.0014, 6.8688



11.7161, -0.0689, 1.0581



17.3632, 22.6464, 11.0956



42.1663, 60.8216, 27.0474

Inverse Universe

The Inverse Universe completely reimagines the original color for something new.



19.8225, -4.7386, -2.3765



25.2843, -7.0316, -4.2835



16.7177, 0.2004, -6.8976



12.0151, -1.1643, 0.2287



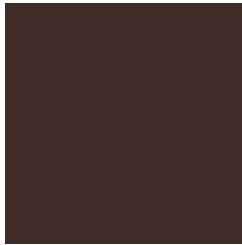
24.9824, -9.1158, -11.5475



61.5201, -21.3967, -30.7053

Previews

White Background



This preview shows how the HunterLab color 17.4294, 4.1270, 4.2827 looks on a white background.

Color Contrast Check

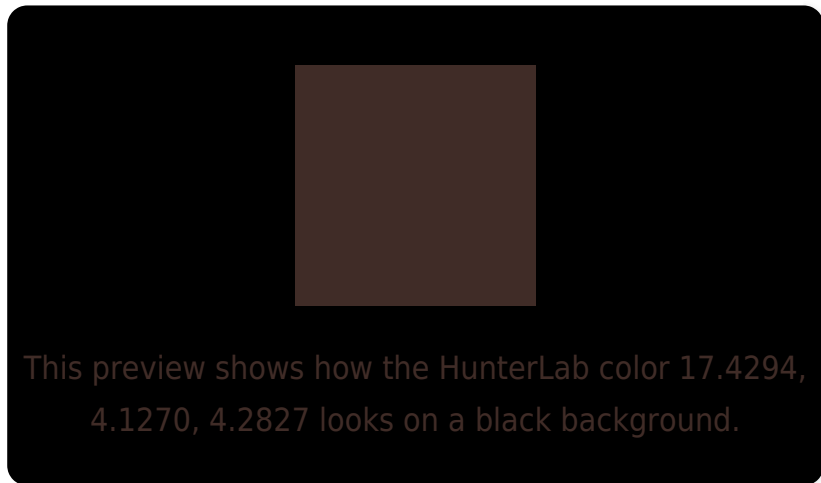
Large Text (above 18pt) WCAG AA ✓ Pass

Any Text WCAG AA ✓ Pass

Large Text (above 18pt) WCAG AAA ✓ Pass

Any Text WCAG AAA ✓ Pass

Black Background



Color Contrast Check

Large Text (above 18pt) WCAG AA × Fail

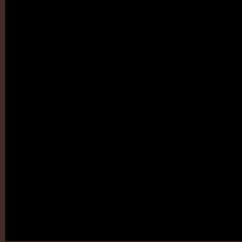
Any Text WCAG AA × Fail

Large Text (above 18pt) WCAG AAA × Fail

Any Text WCAG AAA × Fail

If you want to check with other color combinations, try the [Color Contrast Checker](#).

HunterLab 17.4294, 4.1270, 4.2827 Background



This preview shows how black text looks on a background with the HunterLab color 17.4294, 4.1270, 4.2827.

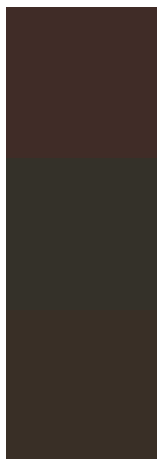


This preview shows how white text looks on a background with the HunterLab color 17.4294, 4.1270,

Color Blindness Simulation

Color vision deficiency is a very complex topic, and I could not describe the different causes any better than Wikipedia does, so if you want to learn more, you should check out their [article about color blindness](#).

Dichromacy



Original Color

17.4294, 4.1270, 4.2827

Protanopia

17.5692, -1.1332, 3.7268

Deuteranopia

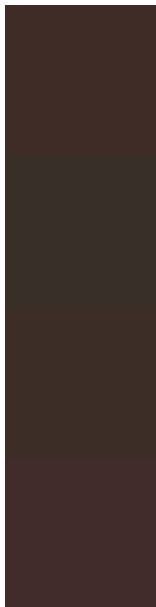
17.4437, 0.7219, 4.5287



Tritanopia

17.4609, 5.6016, 2.0806

Trichromacy



Original Color

17.4294, 4.1270, 4.2827

Protanomaly

17.3982, 0.6440, 3.8908

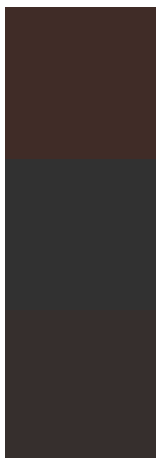
Deuteranomaly

17.4774, 1.9980, 4.5838

Tritanomaly

17.3954, 5.2665, 3.0213

Monochromacy



Original Color

17.4294, 4.1270, 4.2827

Achromatopsia

17.5253, -0.9351, 0.9522

Achromatomaly

17.3400, 0.6556, 2.2076

CSS Examples

Text

The CSS property to change the color of the text to HunterLab 17.4294, 4.1270, 4.2827 is called "color". The color property can be set on classes, ids or directly on the HTML element.

This example shows how text in the color `rgb(64, 44, 39)` looks like.

```
.text, #text, p{  
    color:rgb(64, 44, 39)  
}
```

If you want to add a text shadow in that color use the text-shadow property, you can generate a text shadow directly with our [CSS Text Shadow Generator](#).

Here you see how black text with a 4 pixel rgb(64, 44, 39) colored shadow looks like.

```
.shadow{ text-shadow: 4px 4px 2px rgb(64, 44, 39) }
```

Border

The CSS property to change the border of an element to HunterLab 17.4294, 4.1270, 4.2827 is called "border".

The border property can be set on classes, ids or directly on the HTML element.

This example shows the color as border, it can be applied via the CSS property "border" or "border-color".

```
.border, #border, table{ border:4px solid rgb(64, 44, 39) }
```


If only the border color should be changed use the property `border-color`.

```
.border{ border-color:rgb(64, 44, 39) }
```

If you want to add a box shadow in that color use:

Here you see how a box with a 4 pixel `rgb(64, 44, 39)` colored shadow looks like.

```
.boxshadow{ -moz-box-shadow:4px 4px 4px  
4px rgb(64, 44, 39); -webkit-box-  
shadow:4px 4px 4px 4px rgb(64, 44, 39);  
box-shadow:4px 4px 4px 4px rgb(64, 44, 39)  
}
```

Background

The CSS property to change the background color of an element to HunterLab 17.4294, 4.1270, 4.2827 is called "background". The background property can be set on classes, ids or directly on the HTML element.

```
.background, #background, body{  
background: rgb(64, 44, 39) }
```

If only the background color should be changed can be used:

```
.background{ background-color: rgb(64, 44,  
39) }
```

This example shows the color as background, it is applied via the CSS property "background".

To optimize and compress your CSS code, you can use our [online CSS compressor and optimizer](#) based on csstidy. If you want to create a linear or radial gradient as background or border, check our [CSS Gradient Generator](#).

Hey! You found this booklet interesting? Support Converting Colors with the new Membership Option!

The pro membership hides all ads, plus gives you double the colors in the color bucket, and more awesome pro features!

[Learn more, Memberships starting at \\$2.50/m!](#)

**Follow me
on Twitter!**

@ConvertingColor