

Converting Colors

HunterLab(17.2889, 6.9817,
2.8442)

Have a look what the booklet for
HunterLab(17.2889, 6.9817, 2.8442)
contains.

HunterLab(17.2894, 7.0438, 2.9394)	3
<i>Conversions</i>	4
<i>Details</i>	6
<i>Harmonies</i>	12
<i>Previews</i>	24
<i>Color Blindness Simulation</i>	28
<i>CSS Examples</i>	31

Color

**HunterLab(17.2894, 7.0438,
2.9394)**

Conversions

Conversions Part 1

Format	Color
Hex	44292B
RGB	68, 41, 43
RGB Percent	27%, 16%, 17%
CMY	0.7333, 0.8392, 0.8314
CMYK	0.00, 0.40, 0.37, 0.73
HSL	356°, 25%, 21%
HSV	356°, 40%, 27%
XYZ	3.6129, 2.9892, 2.6721
YIQ	49.3010, 15.4500, 6.3460

Conversions

Conversions Part 2

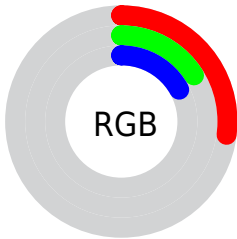
Format	Color
R_{YB}	68, 41, 43
Decimal	4466987
CIE _{Lab}	20.00, 12.94, 3.95
CIE _{LCh}	20, 13.529, 16.980
Yxy	2.9894, 0.3896, 0.3223
Android (android.graphics.Color)	4282657067 (0xFF44292B)
YUV	49.3010, -3.1064, 16.3990
Hunter-Lab	17.2894, 7.0438, 2.9394

Details

The HunterLab color **17.2894, 7.0438, 2.9394** is a dark color, and the websafe version is hex **333333**. A complement of this color would be **22.3586, -7.4724, -0.0222**, and the grayscale version is **17.6325, -0.9408, 0.9580**.

A 20% lighter version of the original color is **33.6198, 7.5633, 4.5668**, and **4.7096, 8.1119, 2.6825** is the 20% darker color. If you saturate the color by 10%, you get **15.8628, 9.2728, 3.4859**, and if you desaturate by 10%, it is **18.8440, 4.8510, 2.4503**.

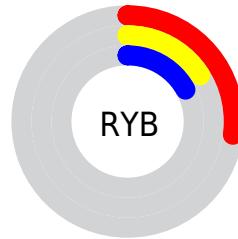
Distribution



 Red (27%)

 Green (16%)

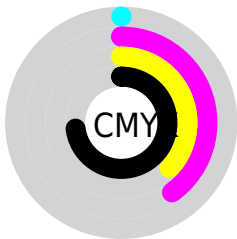
 Blue (17%)



 Red (27%)

 Yellow (16%)

 Blue (17%)

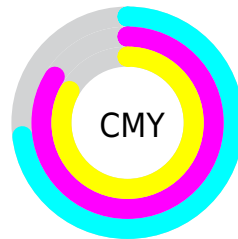


 Cyan (0%)

 Magenta (40%)

 Yellow (37%)

 Black (73%)



 Cyan (73%)

 Magenta (84%)

 Yellow (83%)

Brightness & Saturation Gradients

These gradients show how the HunterLab color 17.2894, 7.0438, 2.9394 changes by changing the brightness by 10 percent. The first figure shows a shift by +10% for each color and the second figure -10%.

Similar to the brightness gradients but the following saturation gradients show a change of the HunterLab color 17.2894, 7.0438, 2.9394 by changing the saturation by 10% instead.

■ 17.2894, 7.0438,
2.9394

■ 17.2894, 7.0438,
2.9394

■ 113.2076, 8.0104,
10.0775

■ 10.6122, 6.4167,
2.2364

■ 33.5436, 7.8593,
4.3768

■ 0.1202, 468.8870,
0.0842

■ 42.9182, 8.1015,
5.1230

0.0000, NaN, NaN

0.0000, NaN, NaN

■ 53.0328, 8.2553,
5.8911

0.0000, NaN, NaN

■ 63.8367, 8.3318,
6.6820

0.0000, NaN, NaN

■ 75.2885, 8.3395,
7.4962

0.0000, NaN, NaN

0.0000, NaN, NaN

■ 87.3534, 8.2851,

100.0017, 8.1739,
9.1942

17.2894, 7.0438,
2.9394

17.2894, 7.0438,
2.9394

15.8628, 9.2728,
3.4859

18.8440, 4.8510,
2.4503

14.5849, 11.4946,
4.0837

20.5066, 2.7193,
2.0164

13.4803, 13.6294,
4.7178

22.2623, 0.6555,
1.6338

12.5729, 15.5624,
5.3588

24.0984, -1.3412,
1.2969

11.8588, 17.2285,
5.9465

26.0045, -3.2758,
0.9999

■ 11.1569, 19.1082,
6.4128

■ 27.9723, -5.1549,
0.7374

■ 11.1354, 19.1688,
6.4276

■ 29.9950, -6.9859,
0.5046

■ 32.0670, -8.7756,
0.2975

■ 34.1836, -10.5302,
0.1125

Harmonies

Analogous

The Analogous color harmony consists of three colors that are next to each other on the color wheel.



17.2898, 7.2043, -0.7852



17.2894, 7.0438, 2.9394



17.2898, 4.6284, 5.4719

Triad

The Triadic color harmony groups three colors that are evenly spaced from another and form a triangle on the color wheel.



17.2898, 7.0430, 2.9397



17.2898, -6.1827, 5.2167



17.2898, -2.6182, -7.7863

Complementary

The Complementary color scheme is a pair of colors which are on the opposite of each other on the color wheel.



17.2894, 7.0438, 2.9394



22.3586, -7.4724, -0.0222

Split Complementary

Split-complementary colors differ from the complementary color scheme. The scheme consists of three colors, the original color and two neighbors of the complement color.



17.2898, -5.8526, -5.2902



17.2894, 7.0438, 2.9394



17.2898, -7.7814, 2.5059

Square

The Square scheme is like the rectangle color scheme, but the four colors are evenly spaced on the color wheel.



17.2898, 7.0430, 2.9397



17.2898, -3.1074, 6.5673



17.2898, -7.6663, -1.3288



17.2898, 1.3746, -7.5951

Rectangle

The Rectangle color scheme consists of four colors that form a rectangle on the color wheel.



17.2894, 7.0438, 2.9394



17.2898, 2.1802, 6.4009



17.2898, -7.6663, -1.3288



17.2898, -3.8225, -7.2135

Sweetspot

The Sweet Spot groups the original color and five complimentary colors.



17.2898, 7.0430, 2.9397



28.6905, 1.6186, 2.2893



17.7566, 9.8036, -7.1476



14.8787, 0.9022, 1.2022



64.8100, -3.4581, 3.5212



16.4960, -0.8802, 0.8963

Same Dimension

The Same Dimension uses a secret algorithm to generate beautiful new colors.



17.2898, 7.0430, 2.9397



20.8545, 12.3240, 4.6212



19.6660, 2.1032, 5.8298



11.5766, 0.2096, 0.8188



15.9738, 27.4540, 9.5591



39.9381, 68.4936, 25.0451

Inverse Universe

The Inverse Universe completely reimagines the original color for something new.



17.2898, 7.0430, 2.9397



20.8545, 12.3240, 4.6212



19.4692, -2.8184, -4.7070



11.5766, 0.2096, 0.8188



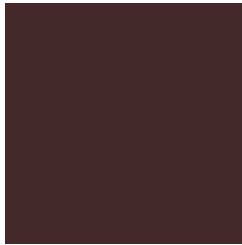
15.9738, 27.4540, 9.5591



39.9381, 68.4936, 25.0451

Previews

White Background



This preview shows how the HunterLab color 17.2894, 7.0438, 2.9394 looks on a white background.

Color Contrast Check

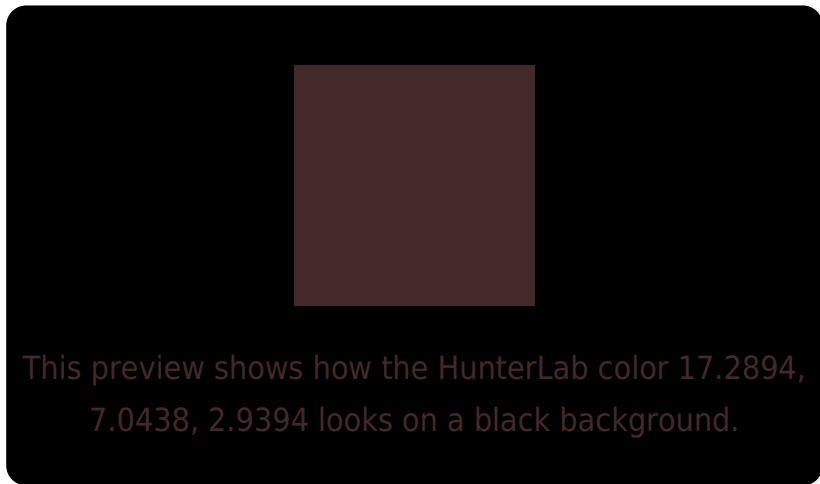
Large Text (above 18pt) WCAG AA ✓ Pass

Any Text WCAG AA ✓ Pass

Large Text (above 18pt) WCAG AAA ✓ Pass

Any Text WCAG AAA ✓ Pass

Black Background



Color Contrast Check

Large Text (above 18pt) WCAG AA × Fail

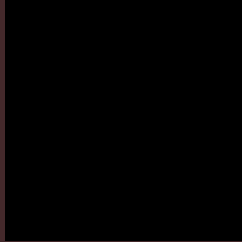
Any Text WCAG AA × Fail

Large Text (above 18pt) WCAG AAA × Fail

Any Text WCAG AAA × Fail

If you want to check with other color combinations, try the [Color Contrast Checker](#).

HunterLab 17.2894, 7.0438, 2.9394 Background



This preview shows how black text looks on a background with the HunterLab color 17.2894, 7.0438, 2.9394.

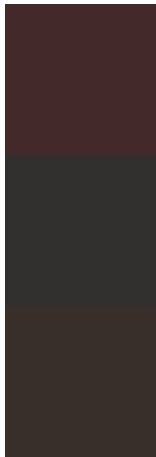


This preview shows how white text looks on a background with the HunterLab color 17.2894, 7.0438,

Color Blindness Simulation

Color vision deficiency is a very complex topic, and I could not describe the different causes any better than Wikipedia does, so if you want to learn more, you should check out their [article about color blindness](#).

Dichromacy



Original Color

17.2894, 7.0438, 2.9394

Protanopia

17.3126, -0.5469, 1.4483

Deuteranopia

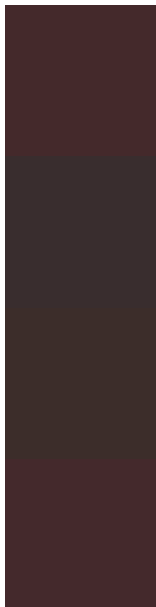
17.4383, 0.8598, 3.3128



Tritanopia

17.3109, 7.1515, 2.6307

Trichromacy



Original Color

17.2894, 7.0438, 2.9394

Protanomaly

17.1578, 2.4210, 1.6830

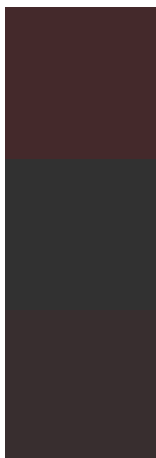
Deuteranomaly

17.3338, 2.8226, 3.2379

Tritanomaly

17.3109, 7.1515, 2.6307

Monochromacy



Original Color

17.2894, 7.0438, 2.9394

Achromatopsia

17.5253, -0.9351, 0.9522

Achromatomaly

17.3204, 1.8531, 1.4993

CSS Examples

Text

The CSS property to change the color of the text to HunterLab 17.2894, 7.0438, 2.9394 is called "color". The color property can be set on classes, ids or directly on the HTML element.

This example shows how text in the color `rgb(68, 41, 43)` looks like.

```
.text, #text, p{  
    color:rgb(68, 41, 43)  
}
```

If you want to add a text shadow in that color use the text-shadow property, you can generate a text shadow directly with our [CSS Text Shadow Generator](#).

Here you see how black text with a 4 pixel rgb(68, 41, 43) colored shadow looks like.

```
.shadow{ text-shadow: 4px 4px 2px rgb(68, 41, 43) }
```

Border

The CSS property to change the border of an element to HunterLab 17.2894, 7.0438, 2.9394 is called "border".

The border property can be set on classes, ids or directly on the HTML element.

This example shows the color as border, it can be applied via the CSS property "border" or "border-color".

```
.border, #border, table{ border:4px solid rgb(68, 41, 43) }
```


If only the border color should be changed use the property border-color.

```
.border{ border-color:rgb(68, 41, 43) }
```

If you want to add a box shadow in that color use:

Here you see how a box with a 4 pixel rgb(68, 41, 43) colored shadow looks like.

```
.boxshadow{ -moz-box-shadow:4px 4px 4px  
4px rgb(68, 41, 43); -webkit-box-  
shadow:4px 4px 4px 4px rgb(68, 41, 43);  
box-shadow:4px 4px 4px 4px rgb(68, 41, 43)  
}
```

Background

The CSS property to change the background color of an element to HunterLab 17.2894, 7.0438, 2.9394 is called "background". The background property can be set on classes, ids or directly on the HTML element.

```
.background, #background, body{  
background: rgb(68, 41, 43) }
```

If only the background color should be changed can be used:

```
.background{ background-color: rgb(68, 41,  
43) }
```

This example shows the color as background, it is applied via the CSS property "background".

To optimize and compress your CSS code, you can use our [online CSS compressor and optimizer](#) based on csstidy. If you want to create a linear or radial gradient as background or border, check our [CSS Gradient Generator](#).

Hey! You found this booklet interesting? Support Converting Colors with the new Membership Option!

The pro membership hides all ads, plus gives you double the colors in the color bucket, and more awesome pro features!

[Learn more, Memberships starting at \\$2.50/m!](#)

**Follow me
on Twitter!**

@ConvertingColor