

# Converting Colors

HunterLab(17.3173, 4.7405,  
2.9267)

Have a look what the booklet for  
HunterLab(17.3173, 4.7405, 2.9267)  
contains.

<b>HunterLab(17.2979, 4.9613, 2.9120)</b> .....	3
<b><i>Conversions</i></b> .....	4
<b><i>Details</i></b> .....	6
<b><i>Harmonies</i></b> .....	12
<b><i>Previews</i></b> .....	24
<b><i>Color Blindness Simulation</i></b> .....	28
<b><i>CSS Examples</i></b> .....	31

# Color

**HunterLab(17.2979, 4.9613,  
2.9120)**

# Conversions

## Conversions Part 1

Format	Color
Hex	402B2B
RGB	64, 43, 43
RGB Percent	25%, 17%, 17%
CMY	0.7490, 0.8314, 0.8314
CMYK	0.00, 0.33, 0.33, 0.75
HSL	0°, 20%, 21%
HSV	0°, 33%, 25%
XYZ	3.4143, 2.9922, 2.6831
YIQ	49.2790, 12.5160, 4.4520

# Conversions

## Conversions Part 2

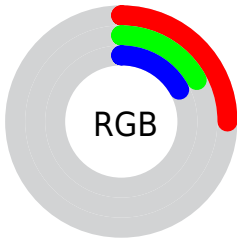
<b>Format</b>	<b>Color</b>
<b>RYB</b>	64, 43, 43
Decimal	4205355
CIELab	20.01, 9.75, 3.89
CIELCh	20, 10.497, 21.758
Yxy	2.9923, 0.3756, 0.3292
Android (android.graphics.Color)	4282395435 (0xFF402B2B)
YUV	49.2790, -3.0955, 12.9103
Hunter-Lab	17.2979, 4.9613, 2.9120

# Details

The HunterLab color **17.2979, 4.9613, 2.9120** is a dark color, and the websafe version is hex **333333**. A complement of this color would be **21.3317, -5.9091, -0.4407**, and the grayscale version is **17.6258, -0.9405, 0.9576**.

A 20% lighter version of the original color is **33.6067, 5.0102, 4.5077**, and **3.9929, 6.8379, 2.5801** is the 20% darker color. If you saturate the color by 10%, you get **15.8732, 6.9847, 3.4879**, and if you desaturate by 10%, it is **18.8295, 2.9997, 2.3655**.

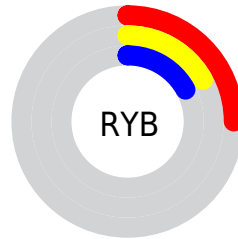
# Distribution



Red (25%)

Green (17%)

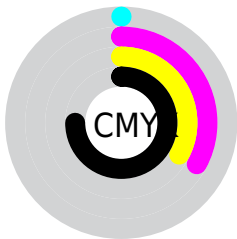
Blue (17%)



Red (25%)

Yellow (17%)

Blue (17%)

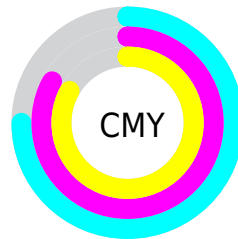


Cyan (0%)

Magenta (33%)

Yellow (33%)

Black (75%)



Cyan (75%)

Magenta (83%)

Yellow (83%)

# Brightness & Saturation Gradients

These gradients show how the HunterLab color 17.2979, 4.9613, 2.9120 changes by changing the brightness by 10 percent. The first figure shows a shift by +10% for each color and the second figure -10%.

Similar to the brightness gradients but the following saturation gradients show a change of the HunterLab color 17.2979, 4.9613, 2.9120 by changing the saturation by 10% instead.



■ 17.2979, 4.9613,  
2.9120

■ 17.2979, 4.9613,  
2.9120

■ 113.2235, 4.4836,  
10.0205

■ 10.6194, 4.5532,  
2.2137

■ 33.5542, 5.3866,  
4.3408

■ 0.3807, 111.5743,  
0.2665

■ 42.9297, 5.4535,  
5.0832

0.0000, NaN, NaN

0.0000, NaN, NaN

■ 53.0451, 5.4422,  
5.8480

0.0000, NaN, NaN

■ 63.8498, 5.3626,  
6.6358

0.0000, NaN, NaN

■ 75.3024, 5.2217,  
7.4471

0.0000, NaN, NaN

0.0000, NaN, NaN

■ 87.3680, 5.0253,

100.0169, 4.7780,  
9.1397

17.2979, 4.9613,  
2.9120

17.2979, 4.9613,  
2.9120

15.8732, 6.9847,  
3.4879

18.8295, 2.9997,  
2.3655

14.5726, 9.0487,  
4.0858

20.4516, 1.1102,  
1.8492

13.4175, 11.1052,  
4.6916

22.1520, -0.7087,  
1.3622

12.4309, 13.0743,  
5.2803

23.9206, -2.4622,  
0.9021

11.6344, 14.8428,  
5.8154

25.7490, -4.1571,  
0.4658

■ 10.9546, 16.5070,  
6.3242

■ 27.6306, -5.8010,  
0.0505

■ 10.4408, 17.8776,  
6.7465

■ 29.5596, -7.4010,  
-0.3466

■ 31.5317, -8.9636,  
-0.7282

■ 33.5428, -10.4945,  
-1.0963

# Harmonies

## Analogous

The Analogous color harmony consists of three colors that are next to each other on the color wheel.



17.2983, 5.3718, 0.1098



17.2979, 4.9613, 2.9120



17.2983, 2.9180, 4.8255

# Triad

The Triadic color harmony groups three colors that are evenly spaced from another and form a triangle on the color wheel.



17.2983, 4.9606, 2.9123



17.2983, -5.3563, 4.0934



17.2983, -1.7692, -5.6541

# Complementary

The Complementary color scheme is a pair of colors which are on the opposite of each other on the color wheel.



17.2979, 4.9613, 2.9120



21.3317, -5.9091, -0.4407

# Split Complementary

Split-complementary colors differ from the complementary color scheme. The scheme consists of three colors, the original color and two neighbors of the complement color.



17.2983, -4.4573, -4.1237



17.2979, 4.9613, 2.9120



17.2983, -6.4309, 1.7341

# Square

The Square scheme is like the rectangle color scheme, but the four colors are evenly spaced on the color wheel.



17.2983, 4.9606, 2.9123



17.2983, -3.0761, 5.4193



17.2983, -6.1138, -1.2923



17.2983, 1.3389, -5.1881



# Rectangle

The Rectangle color scheme consists of four colors that form a rectangle on the color wheel.



17.2979, 4.9613, 2.9120



17.2983, 0.9797, 5.5034



17.2983, -6.1138, -1.2923



17.2983, -2.7486, -5.3477

# Sweetspot

The Sweet Spot groups the original color and five complimentary colors.



17.2983, 4.9606, 2.9123



27.4634, 0.8882, 2.2812



17.8548, 7.7803, -4.9687



14.3451, 0.5430, 1.2181



63.7533, -3.4017, 3.4638



15.6573, -0.8354, 0.8507



# Same Dimension

The Same Dimension uses a secret algorithm to generate beautiful new colors.



17.2983, 4.9606, 2.9123



21.2853, 8.6472, 4.4361



19.6379, 0.5962, 5.2108



11.5713, 0.1802, 0.8961



15.9250, 27.2695, 10.2903



39.8894, 68.3095, 25.7755



# Inverse Universe

The Inverse Universe completely reimagines the original color for something new.



21.3317, -5.9091, -0.4407



27.7821, -8.9771, -1.0036



18.6436, -1.8186, -3.9693



12.1665, -1.4078, 0.4067



30.6444, -16.2447, -3.2351

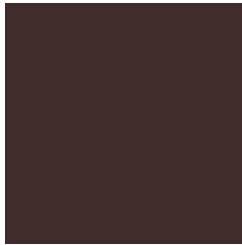


76.7600, -40.6906, -8.1041



# Previews

## White Background



This preview shows how the HunterLab color 17.2979, 4.9613, 2.9120 looks on a white background.

## Color Contrast Check

Large Text (above 18pt) WCAG AA ✓ Pass

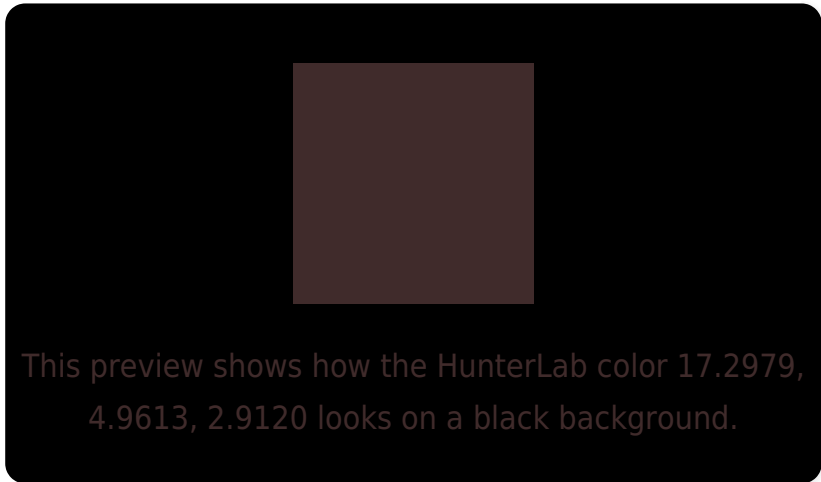
Any Text WCAG AA ✓ Pass

Large Text (above 18pt) WCAG AAA ✓ Pass

Any Text WCAG AAA ✓ Pass



# Black Background



## Color Contrast Check

Large Text (above 18pt) WCAG AA × Fail

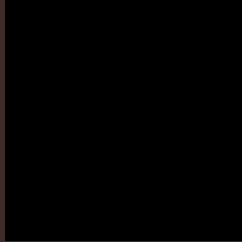
Any Text WCAG AA × Fail

Large Text (above 18pt) WCAG AAA × Fail

Any Text WCAG AAA × Fail

If you want to check with other color combinations, try the [Color Contrast Checker](#).

# HunterLab 17.2979, 4.9613, 2.9120 Background



This preview shows how black text looks on a background with the HunterLab color 17.2979, 4.9613, 2.9120.



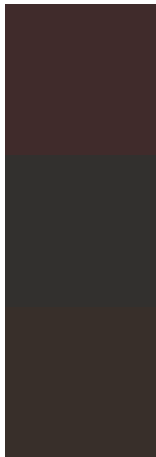
This preview shows how white text looks on a background with the HunterLab color 17.2979, 4.9613,



# Color Blindness Simulation

Color vision deficiency is a very complex topic, and I could not describe the different causes any better than Wikipedia does, so if you want to learn more, you should check out their [article about color blindness](#).

## Dichromacy



### Original Color

17.2979, 4.9613, 2.9120

### Protanopia

17.2895, -0.6728, 1.7781

### Deuteranopia

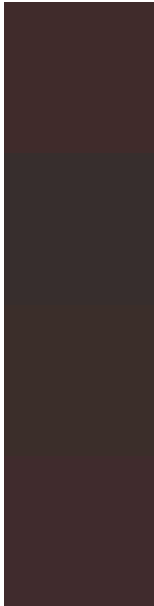
17.4383, 0.8598, 3.3128



## Tritanopia

17.3638, 5.2993, 1.9663

# Trichromacy



## Original Color

17.2979, 4.9613, 2.9120

## Protanomaly

17.1921, 1.3339, 2.0553

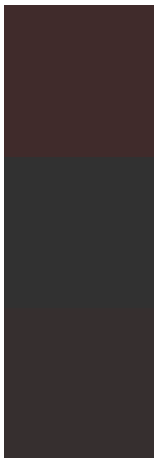
## Deuteranomaly

17.4670, 2.1195, 3.3648

## Tritanomaly

17.3413, 5.1842, 2.2883

# Monochromacy



## Original Color

17.2979, 4.9613, 2.9120

## Achromatopsia

17.5253, -0.9351, 0.9522

## Achromatomaly

17.3854, 0.9000, 1.5571

# CSS Examples

## Text

The CSS property to change the color of the text to HunterLab 17.2979, 4.9613, 2.9120 is called "color". The color property can be set on classes, ids or directly on the HTML element.

This example shows how text in the color `rgb(64, 43, 43)` looks like.

```
.text, #text, p{  
    color:rgb(64, 43, 43)  
}
```

If you want to add a text shadow in that color use the text-shadow property, you can generate a text shadow directly with our [CSS Text Shadow Generator](#).

Here you see how black text with a 4 pixel rgb(64, 43, 43) colored shadow looks like.

```
.shadow{ text-shadow: 4px 4px 2px rgb(64, 43, 43) }
```

## Border

The CSS property to change the border of an element to HunterLab 17.2979, 4.9613, 2.9120 is called "border".

The border property can be set on classes, ids or directly on the HTML element.

This example shows the color as border, it can be applied via the CSS property "border" or "border-color".

```
.border, #border, table{ border:4px solid rgb(64, 43, 43) }
```



If only the border color should be changed use the property `border-color`.

```
.border{ border-color:rgb(64, 43, 43) }
```

If you want to add a box shadow in that color use:

Here you see how a box with a 4 pixel `rgb(64, 43, 43)` colored shadow looks like.

```
.boxshadow{ -moz-box-shadow:4px 4px 4px  
4px rgb(64, 43, 43); -webkit-box-  
shadow:4px 4px 4px 4px rgb(64, 43, 43);  
box-shadow:4px 4px 4px 4px rgb(64, 43, 43)  
}
```

# Background

The CSS property to change the background color of an element to HunterLab 17.2979, 4.9613, 2.9120 is called "background". The background property can be set on classes, ids or directly on the HTML element.

```
.background, #background, body{  
background: rgb(64, 43, 43) }
```

If only the background color should be changed can be used:

```
.background{ background-color: rgb(64, 43,  
43) }
```

This example shows the color as background, it is applied via the CSS property "background".

To optimize and compress your CSS code, you can use our [online CSS compressor and optimizer](#) based on csstidy. If you want to create a linear or radial gradient as background or border, check our [CSS Gradient Generator](#).

Hey! You found this booklet  
interesting? Support Converting  
Colors with the new Membership  
Option!

The pro membership hides all ads, plus gives you  
double the colors in the color bucket, and more  
awesome pro features!

**[Learn more, Memberships starting at \\$2.50/m!](#)**

**Follow me  
on Twitter!**

@ConvertingColor