

Converting Colors

HunterLab(17.4109, 12.1657,
7.9514)

Have a look what the booklet for
HunterLab(17.4109, 12.1657,
7.9514) contains.

HunterLab(17.3705, 12.3422, 7.9701)	3
<i>Conversions</i>	4
<i>Details</i>	6
<i>Harmonies</i>	12
<i>Previews</i>	24
<i>Color Blindness Simulation</i>	28
<i>CSS Examples</i>	31

Color

**HunterLab(17.3705, 12.3422,
7.9701)**

Conversions

Conversions Part 1

Format	Color
Hex	512318
RGB	81, 35, 24
RGB Percent	32%, 14%, 9%
CMY	0.6824, 0.8627, 0.9059
CMYK	0.00, 0.57, 0.70, 0.68
HSL	12°, 54%, 21%
HSV	12°, 70%, 32%
XYZ	4.1592, 3.0173, 1.2273
YIQ	47.5000, 30.9470, 6.3310

Conversions

Conversions Part 2

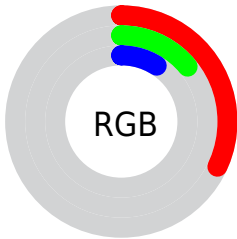
Format	Color
RYB	81, 38, 24
Decimal	5317400
CIELab	20.11, 20.53, 17.42
CIELCh	20, 26.928, 40.312
Yxy	3.0175, 0.4949, 0.3590
Android (android.graphics.Color)	4283507480 (0xFF512318)
YUV	47.5000, -11.5855, 29.3795
Hunter-Lab	17.3705, 12.3422, 7.9701

Details

The HunterLab color **17.3705, 12.3422, 7.9701** is a dark color, and the websafe version is hex **663333**. A complement of this color would be **22.7338, -7.9698, -6.4332**, and the grayscale version is **17.0564, -0.9101, 0.9267**.

A 20% lighter version of the original color is **33.7023, 14.0425, 11.6712**, and **5.9960, 10.3048, 3.5911** is the 20% darker color. If you saturate the color by 10%, you get **16.2457, 14.5587, 8.4905**, and if you desaturate by 10%, it is **18.6483, 10.1244, 7.3008**.

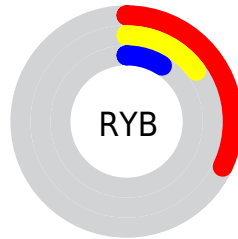
Distribution



Red (32%)

Green (14%)

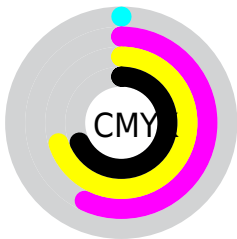
Blue (9%)



Red (32%)

Yellow (15%)

Blue (9%)

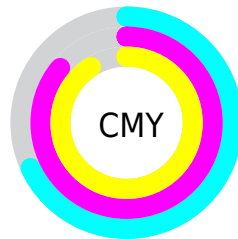


Cyan (0%)

Magenta (57%)

Yellow (70%)

Black (68%)



Cyan (68%)

Magenta (86%)

Yellow (91%)

Brightness & Saturation Gradients

These gradients show how the HunterLab color 17.3705, 12.3422, 7.9701 changes by changing the brightness by 10 percent. The first figure shows a shift by +10% for each color and the second figure -10%.

Similar to the brightness gradients but the following saturation gradients show a change of the HunterLab color 17.3705, 12.3422, 7.9701 by changing the saturation by 10% instead.

■ 17.3705, 12.3422,
7.9701

■ 17.3705, 12.3422,
7.9701

■ 113.3593, 16.5733,
22.3887

■ 10.6812, 11.2661,
7.4704

■ 33.6448, 14.0098,
11.5786

■ 1.1228, 79.6315,
0.7859

■ 43.0281, 14.6462,
13.2307

0.0000, NaN, NaN

0.0000, NaN, NaN

■ 53.1507, 15.1744,
14.8245

0.0000, NaN, NaN

■ 63.9621, 15.6077,
16.3779

0.0000, NaN, NaN

■ 75.4210, 15.9566,
17.9035

0.0000, NaN, NaN

0.0000, NaN, NaN

■ 87.4926, 16.2295,

19.4098

0.0000, NaN, NaN

■ 100.1473, 16.4331,
20.9033

■ 17.3705, 12.3422,
7.9701

■ 17.3705, 12.3422,
7.9701

■ 16.2457, 14.5587,
8.4905

■ 18.6483, 10.1244,
7.3008

■ 15.2891, 16.6941,
8.8447

■ 20.0599, 7.9614,
6.5138

■ 14.5230, 18.5029,
9.2730

■ 21.5891, 5.8817,
5.6370

■ 23.2211, 3.8990,
4.6925

■ 24.9429, 2.0159,
3.6970

■ 26.7438, 0.2287,
2.6626

■ 28.6145, -1.4694,
1.5983

■ 30.5474, -3.0868,
0.5103

■ 32.5360, -4.6321,
-0.5969

Harmonies

Analogous

The Analogous color harmony consists of three colors that are next to each other on the color wheel.



17.3710, 16.8262, 3.3536



17.3705, 12.3422, 7.9701



17.3710, 4.5310, 9.9345

Triad

The Triadic color harmony groups three colors that are evenly spaced from another and form a triangle on the color wheel.



17.3710, 12.3410, 7.9704



17.3710, -13.1102, 5.1677



17.3710, 1.8958, -20.3233

Complementary

The Complementary color scheme is a pair of colors which are on the opposite of each other on the color wheel.



17.3705, 12.3422, 7.9701



22.7338, -7.9698, -6.4332

Split Complementary

Split-complementary colors differ from the complementary color scheme. The scheme consists of three colors, the original color and two neighbors of the complement color.



17.3710, -5.7860, -19.0886



17.3705, 12.3422, 7.9701



17.3710, -13.5597, -1.8658

Square

The Square scheme is like the rectangle color scheme, but the four colors are evenly spaced on the color wheel.



17.3710, 12.3410, 7.9704



17.3710, -9.7567, 8.7835



17.3710, -11.1197, -11.3465



17.3710, 10.1159, -14.2097

Rectangle

The Rectangle color scheme consists of four colors that form a rectangle on the color wheel.



17.3705, 12.3422, 7.9701



17.3710, -1.0111, 10.3100



17.3710, -11.1197, -11.3465



17.3710, -0.8444, -20.8028

Sweetspot

The Sweet Spot groups the original color and five complimentary colors.



17.3710, 12.3410, 7.9704



32.2237, 2.9541, 5.0009



16.8872, 21.6374, -9.8800



16.2344, 1.6916, 2.6486



67.9972, -3.6282, 3.6944



19.0543, -1.0167, 1.0353

Same Dimension

The Same Dimension uses a secret algorithm to generate beautiful new colors.



17.3710, 12.3410, 7.9704



20.3508, 20.8282, 11.3920



23.1619, 0.5655, 12.0700



13.9788, -0.0287, 1.2870



18.6623, 24.9815, 11.9369



43.6178, 63.7319, 27.9928

Inverse Universe

The Inverse Universe completely reimagines the original color for something new.



22.7338, -7.9698, -6.4332



28.3567, -10.5341, -10.4019



15.6454, 3.3300, -19.8016



14.3711, -1.4393, 0.2506



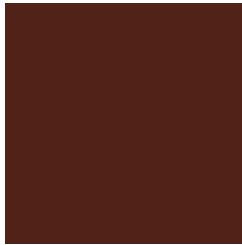
27.2191, -10.0844, -12.2522



64.4045, -22.9160, -31.0310

Previews

White Background



This preview shows how the HunterLab color 17.3705, 12.3422, 7.9701 looks on a white background.

Color Contrast Check

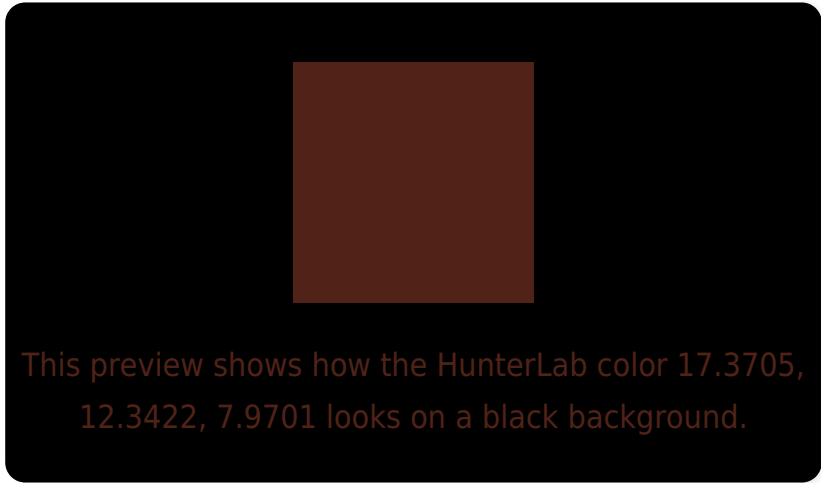
Large Text (above 18pt) WCAG AA ✓ Pass

Any Text WCAG AA ✓ Pass

Large Text (above 18pt) WCAG AAA ✓ Pass

Any Text WCAG AAA ✓ Pass

Black Background



Color Contrast Check

Large Text (above 18pt) WCAG AA × Fail

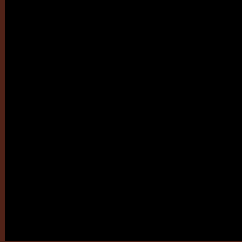
Any Text WCAG AA × Fail

Large Text (above 18pt) WCAG AAA × Fail

Any Text WCAG AAA × Fail

If you want to check with other color combinations, try the [Color Contrast Checker](#).

HunterLab 17.3705, 12.3422, 7.9701 Background



This preview shows how black text looks on a background with the HunterLab color 17.3705, 12.3422, 7.9701.

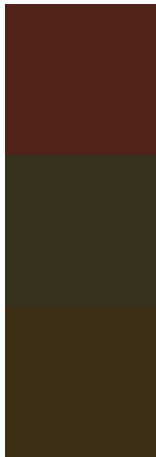


This preview shows how white text looks on a background with the HunterLab color 17.3705, 12.3422,

Color Blindness Simulation

Color vision deficiency is a very complex topic, and I could not describe the different causes any better than Wikipedia does, so if you want to learn more, you should check out their [article about color blindness](#).

Dichromacy



Original Color

17.3705, 12.3422, 7.9701

Protanopia

17.7600, -2.0970, 7.0264

Deuteranopia

17.5479, 0.5843, 8.4260



Tritanopia

17.5079, 13.9165, 5.3797

Trichromacy



Original Color

17.3705, 12.3422, 7.9701

Protanomaly

17.4525, 2.7042, 7.2789

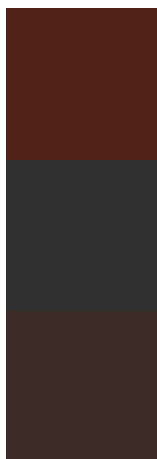
Deuteranomaly

17.3627, 4.4934, 8.1854

Tritanomaly

17.4418, 13.6101, 6.3407

Monochromacy



Original Color

17.3705, 12.3422, 7.9701

Achromatopsia

17.1921, -0.9173, 0.9341

Achromatomaly

16.8371, 3.3316, 3.6742

CSS Examples

Text

The CSS property to change the color of the text to HunterLab 17.3705, 12.3422, 7.9701 is called "color". The color property can be set on classes, ids or directly on the HTML element.

This example shows how text in the color `rgb(81, 35, 24)` looks like.

```
.text, #text, p{  
    color:rgb(81, 35, 24)  
}
```

If you want to add a text shadow in that color use the text-shadow property, you can generate a text shadow directly with our [CSS Text Shadow Generator](#).

Here you see how black text with a 4 pixel rgb(81, 35, 24) colored shadow looks like.

```
.shadow{ text-shadow: 4px 4px 2px rgb(81, 35, 24) }
```

Border

The CSS property to change the border of an element to HunterLab 17.3705, 12.3422, 7.9701 is called "border". The border property can be set on classes, ids or directly on the HTML element.

This example shows the color as border, it can be applied via the CSS property "border" or "border-color".

```
.border, #border, table{ border:4px solid rgb(81, 35, 24) }
```


If only the border color should be changed use the property `border-color`.

```
.border{ border-color:rgb(81, 35, 24) }
```

If you want to add a box shadow in that color use:

Here you see how a box with a 4 pixel `rgb(81, 35, 24)` colored shadow looks like.

```
.boxshadow{ -moz-box-shadow:4px 4px 4px  
4px rgb(81, 35, 24); -webkit-box-  
shadow:4px 4px 4px 4px rgb(81, 35, 24);  
box-shadow:4px 4px 4px 4px rgb(81, 35, 24)  
}
```

Background

The CSS property to change the background color of an element to HunterLab 17.3705, 12.3422, 7.9701 is called "background". The background property can be set on classes, ids or directly on the HTML element.

```
.background, #background, body{  
background: rgb(81, 35, 24) }
```

If only the background color should be changed can be used:

```
.background{ background-color: rgb(81, 35,  
24) }
```

This example shows the color as background, it is applied via the CSS property "background".

To optimize and compress your CSS code, you can use our [online CSS compressor and optimizer](#) based on csstidy. If you want to create a linear or radial gradient as background or border, check our [CSS Gradient Generator](#).

Hey! You found this booklet interesting? Support Converting Colors with the new Membership Option!

The pro membership hides all ads, plus gives you double the colors in the color bucket, and more awesome pro features!

[Learn more, Memberships starting at \\$2.50/m!](#)

**Follow me
on Twitter!**

@ConvertingColor