

Converting Colors

HunterLab(17.4287, 6.0197,
2.7248)

Have a look what the booklet for
HunterLab(17.4287, 6.0197, 2.7248)
contains.

| | |
|---|----|
| HunterLab(17.3090, 6.1057, 2.6104) | 3 |
| <i>Conversions</i> | 4 |
| <i>Details</i> | 6 |
| <i>Harmonies</i> | 12 |
| <i>Previews</i> | 24 |
| <i>Color Blindness Simulation</i> | 28 |
| <i>CSS Examples</i> | 31 |

Color

**HunterLab(17.3090, 6.1057,
2.6104)**

Conversions

Conversions Part 1

| Format | Color |
|-------------|--------------------------|
| Hex | 422A2C |
| RGB | 66, 42, 44 |
| RGB Percent | 26%, 16%, 17% |
| CMY | 0.7412, 0.8353, 0.8274 |
| CMYK | 0.00, 0.36, 0.33, 0.74 |
| HSL | 355°, 22%, 21% |
| HSV | 355°, 36%, 26% |
| XYZ | 3.5293, 2.9960, 2.7751 |
| YIQ | 49.4040, 13.6620, 5.7100 |

Conversions

Conversions Part 2

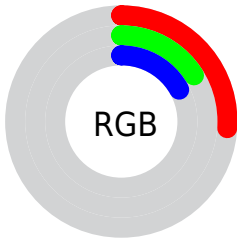
| Format | Color |
|-------------------------------------|------------------------------|
| R_{YB} | 66, 42, 44 |
| Decimal | 4336172 |
| CIE _{Lab} | 20.03, 11.52, 3.26 |
| CIE _{LCh} | 20, 11.968, 15.805 |
| Yxy | 2.9962, 0.3795, 0.3221 |
| Android (android.graphics.Color) | 4282526252 (0xFF422A2C) |
| YUV | 49.4040, -2.6642, 14.5547 |
| Hunter-Lab | 17.3090, 6.1057, 2.6104 |

Details

The HunterLab color **17.3090, 6.1057, 2.6104** is a dark color, and the websafe version is hex **333333**. A complement of this color would be **21.8148, -6.8486, 0.1387**, and the grayscale version is **17.6659, -0.9426, 0.9598**.

A 20% lighter version of the original color is **33.6832, 6.5714, 4.2342**, and **4.4315, 7.6385, 2.4802** is the 20% darker color. If you saturate the color by 10%, you get **15.8862, 8.2529, 3.1055**, and if you desaturate by 10%, it is **18.8479, 4.0015, 2.1735**.

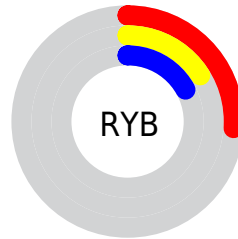
Distribution



 Red (26%)

 Green (16%)

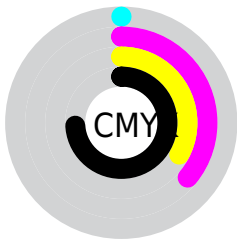
 Blue (17%)



 Red (26%)

 Yellow (16%)

 Blue (17%)

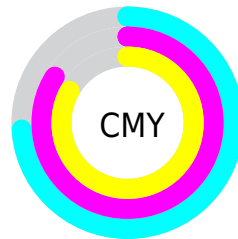


 Cyan (0%)

 Magenta (36%)

 Yellow (33%)

 Black (74%)



 Cyan (74%)

 Magenta (84%)

 Yellow (83%)

Brightness & Saturation Gradients

These gradients show how the HunterLab color 17.3090, 6.1057, 2.6104 changes by changing the brightness by 10 percent. The first figure shows a shift by +10% for each color and the second figure -10%.

Similar to the brightness gradients but the following saturation gradients show a change of the HunterLab color 17.3090, 6.1057, 2.6104 by changing the saturation by 10% instead.

■ 17.3090, 6.1057,
2.6104

■ 17.3090, 6.1057,
2.6104

■ 113.2443, 6.4311,
9.4053

■ 10.6289, 5.5746,
1.9678

■ 33.5681, 6.7487,
3.9478

■ 0.5617, 89.3032,
0.3932

■ 42.9448, 6.9131,
4.6516

0.0000, NaN, NaN

0.0000, NaN, NaN

■ 53.0613, 6.9936,
5.3808

0.0000, NaN, NaN

■ 63.8670, 7.0007,
6.1356

0.0000, NaN, NaN

■ 75.3205, 6.9423,
6.9158

0.0000, NaN, NaN

0.0000, NaN, NaN

■ 87.3870, 6.8247,

100.0369, 6.6529,
8.5511

17.3090, 6.1057,
2.6104

17.3090, 6.1057,
2.6104

15.8862, 8.2529,
3.1055

18.8479, 4.0015,
2.1735

14.5981, 10.4104,
3.6565

20.4850, 1.9586,
1.7908

13.4674, 12.5140,
4.2540

22.2069, -0.0198,
1.4573

12.5177, 14.4662,
4.8763

24.0023, -1.9358,
1.1673

11.7673, 16.1475,
5.4851

25.8621, -3.7948,
0.9149

■ 11.0782, 17.9143,
5.9569

■ 27.7788, -5.6034,
0.6951

■ 10.8180, 18.6375,
6.1273

■ 29.7464, -7.3684,
0.5034

■ 31.7597, -9.0960,
0.3358

■ 33.8146, -10.7920,
0.1891

Harmonies

Analogous

The Analogous color harmony consists of three colors that are next to each other on the color wheel.



17.3094, 6.1620, -0.7176



17.3090, 6.1057, 2.6104



17.3094, 4.0674, 4.9628

Triad

The Triadic color harmony groups three colors that are evenly spaced from another and form a triangle on the color wheel.



17.3094, 6.1049, 2.6107



17.3094, -5.5286, 4.8670



17.3094, -2.5582, -6.5619

Complementary

The Complementary color scheme is a pair of colors which are on the opposite of each other on the color wheel.



17.3090, 6.1057, 2.6104



21.8148, -6.8486, 0.1387

Split Complementary

Split-complementary colors differ from the complementary color scheme. The scheme consists of three colors, the original color and two neighbors of the complement color.



17.3094, -5.4079, -4.3578



17.3090, 6.1057, 2.6104



17.3094, -7.0274, 2.4524

Square

The Square scheme is like the rectangle color scheme, but the four colors are evenly spaced on the color wheel.



17.3094, 6.1049, 2.6107



17.3094, -2.7353, 6.0760



17.3094, -6.9851, -0.9110



17.3094, 0.9639, -6.4958

Rectangle

The Rectangle color scheme consists of four colors that form a rectangle on the color wheel.



17.3090, 6.1057, 2.6104



17.3094, 1.9470, 5.8590



17.3094, -6.9851, -0.9110



17.3094, -3.6202, -6.0454

Sweetspot

The Sweet Spot groups the original color and five complimentary colors.



17.3094, 6.1049, 2.6107



28.0925, 1.2982, 2.1380



17.7183, 8.5421, -6.1799



14.2491, 0.7178, 1.0979



63.7533, -3.4017, 3.4638



15.6573, -0.8354, 0.8507

Same Dimension

The Same Dimension uses a secret algorithm to generate beautiful new colors.



17.3094, 6.1049, 2.6107



21.0158, 10.7518, 4.0627



19.4461, 1.7018, 5.3332



11.5773, 0.2132, 0.8091



15.9799, 27.4768, 9.4681



39.9465, 68.5247, 24.9208

Inverse Universe

The Inverse Universe completely reimagines the original color for something new.



17.3094, 6.1049, 2.6107



21.0158, 10.7518, 4.0627



19.2718, -2.6742, -4.0286



11.5773, 0.2132, 0.8091



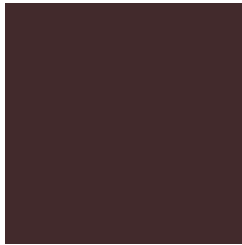
15.9799, 27.4768, 9.4681



39.9465, 68.5247, 24.9208

Previews

White Background



This preview shows how the HunterLab color 17.3090, 6.1057, 2.6104 looks on a white background.

Color Contrast Check

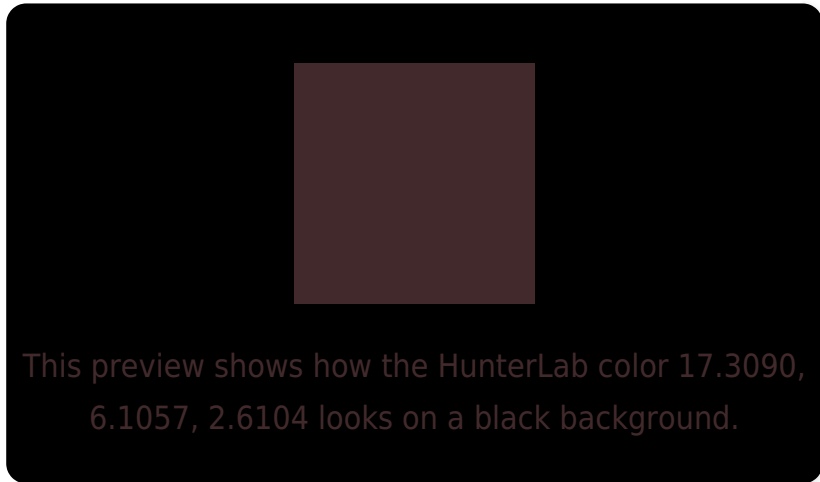
Large Text (above 18pt) WCAG AA ✓ Pass

Any Text WCAG AA ✓ Pass

Large Text (above 18pt) WCAG AAA ✓ Pass

Any Text WCAG AAA ✓ Pass

Black Background



Color Contrast Check

Large Text (above 18pt) WCAG AA × Fail

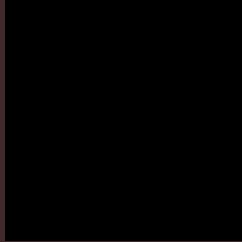
Any Text WCAG AA × Fail

Large Text (above 18pt) WCAG AAA × Fail

Any Text WCAG AAA × Fail

If you want to check with other color combinations, try the [Color Contrast Checker](#).

HunterLab 17.3090, 6.1057, 2.6104 Background



This preview shows how black text looks on a background with the HunterLab color 17.3090, 6.1057, 2.6104.

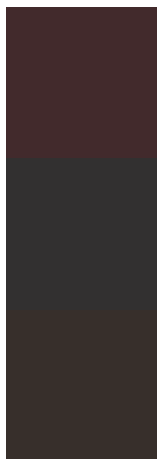


This preview shows how white text looks on a background with the HunterLab color 17.3090, 6.1057,

Color Blindness Simulation

Color vision deficiency is a very complex topic, and I could not describe the different causes any better than Wikipedia does, so if you want to learn more, you should check out their [article about color blindness](#).

Dichromacy



Original Color

17.3090, 6.1057, 2.6104

Protanopia

17.3361, -0.4184, 1.1117

Deuteranopia

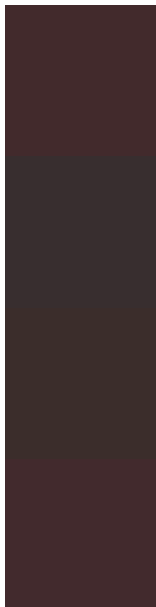
17.3772, 0.6949, 2.9219



Tritanopia

17.3310, 6.2172, 2.2950

Trichromacy



Original Color

17.3090, 6.1057, 2.6104

Protanomaly

17.3204, 1.8531, 1.4993

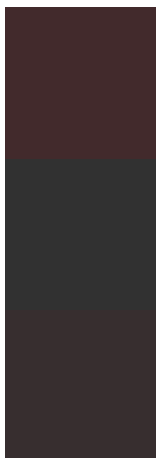
Deuteranomaly

17.2656, 2.6417, 2.8368

Tritanomaly

17.3310, 6.2172, 2.2950

Monochromacy



Original Color

17.3090, 6.1057, 2.6104

Achromatopsia

17.5253, -0.9351, 0.9522

Achromatomaly

17.2379, 1.5786, 1.3996

CSS Examples

Text

The CSS property to change the color of the text to HunterLab 17.3090, 6.1057, 2.6104 is called "color". The color property can be set on classes, ids or directly on the HTML element.

This example shows how text in the color `rgb(66, 42, 44)` looks like.

```
.text, #text, p{  
    color:rgb(66, 42, 44)  
}
```

If you want to add a text shadow in that color use the text-shadow property, you can generate a text shadow directly with our [CSS Text Shadow Generator](#).

Here you see how black text with a 4 pixel rgb(66, 42, 44) colored shadow looks like.

```
.shadow{ text-shadow: 4px 4px 2px rgb(66, 42, 44) }
```

Border

The CSS property to change the border of an element to HunterLab 17.3090, 6.1057, 2.6104 is called "border". The border property can be set on classes, ids or directly on the HTML element.

This example shows the color as border, it can be applied via the CSS property "border" or "border-color".

```
.border, #border, table{ border:4px solid rgb(66, 42, 44) }
```


If only the border color should be changed use the property `border-color`.

```
.border{ border-color:rgb(66, 42, 44) }
```

If you want to add a box shadow in that color use:

Here you see how a box with a 4 pixel `rgb(66, 42, 44)` colored shadow looks like.

```
.boxshadow{ -moz-box-shadow:4px 4px 4px  
4px rgb(66, 42, 44); -webkit-box-  
shadow:4px 4px 4px 4px rgb(66, 42, 44);  
box-shadow:4px 4px 4px 4px rgb(66, 42, 44)  
}
```

Background

The CSS property to change the background color of an element to HunterLab 17.3090, 6.1057, 2.6104 is called "background". The background property can be set on classes, ids or directly on the HTML element.

```
.background, #background, body{  
background: rgb(66, 42, 44) }
```

If only the background color should be changed can be used:

```
.background{ background-color: rgb(66, 42,  
44) }
```

This example shows the color as background, it is applied via the CSS property "background".

To optimize and compress your CSS code, you can use our [online CSS compressor and optimizer](#) based on csstidy. If you want to create a linear or radial gradient as background or border, check our [CSS Gradient Generator](#).

Hey! You found this booklet interesting? Support Converting Colors with the new Membership Option!

The pro membership hides all ads, plus gives you double the colors in the color bucket, and more awesome pro features!

[Learn more, Memberships starting at \\$2.50/m!](#)

**Follow me
on Twitter!**

@ConvertingColor