

Converting Colors

HunterLab(17.4908, 6.6192,
3.1463)

Have a look what the booklet for
HunterLab(17.4908, 6.6192, 3.1463)
contains.

HunterLab(17.4908, 6.6192, 3.1463)	3
<i>Conversions</i>	4
<i>Details</i>	6
<i>Harmonies</i>	12
<i>Previews</i>	24
<i>Color Blindness Simulation</i>	28
<i>CSS Examples</i>	31

Color

**HunterLab(17.4908, 6.6192,
3.1463)**

Conversions

Conversions Part 1

Format	Color
Hex	442A2B
RGB	68, 42, 43
RGB Percent	27%, 16%, 17%
CMY	0.7333, 0.8353, 0.8314
CMYK	0.00, 0.38, 0.37, 0.73
HSL	358°, 24%, 22%
HSV	358°, 38%, 27%
XYZ	3.6479, 3.0593, 2.6837
YIQ	49.8880, 15.1750, 5.8230

Conversions

Conversions Part 2

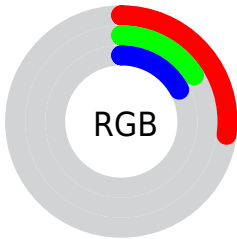
Format	Color
RYB	68, 42, 43
Decimal	4467243
CIELab	20.28, 12.28, 4.35
CIELCh	20, 13.025, 19.499
Yxy	3.0594, 0.3884, 0.3258
Android (android.graphics.Color)	4282657323 (0xFF442A2B)
YUV	49.8880, -3.3958, 15.8842
Hunter-Lab	17.4908, 6.6192, 3.1463

Details

The HunterLab color **17.4908, 6.6192, 3.1463** is a dark color, and the websafe version is hex **333333**. A complement of this color would be **22.4316, -7.1452, -0.3390**, and the grayscale version is **17.8297, -0.9513, 0.9687**.

A 20% lighter version of the original color is **33.8614, 7.0964, 4.8237**, and **4.6863, 8.0254, 3.0282** is the 20% darker color. If you saturate the color by 10%, you get **16.0410, 8.8325, 3.7324**, and if you desaturate by 10%, it is **19.0666, 4.4533, 2.6044**.

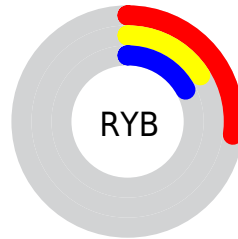
Distribution



Red (27%)

Green (16%)

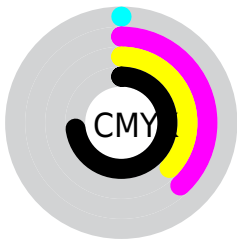
Blue (17%)



Red (27%)

Yellow (16%)

Blue (17%)

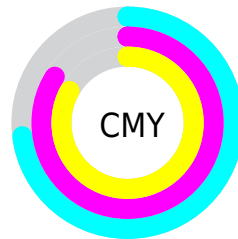


Cyan (0%)

Magenta (38%)

Yellow (37%)

Black (73%)



Cyan (73%)

Magenta (84%)

Yellow (83%)

Brightness & Saturation Gradients

These gradients show how the HunterLab color 17.4908, 6.6192, 3.1463 changes by changing the brightness by 10 percent. The first figure shows a shift by +10% for each color and the second figure -10%.

Similar to the brightness gradients but the following saturation gradients show a change of the HunterLab color 17.4908, 6.6192, 3.1463 by changing the saturation by 10% instead.

■ 17.4908, 6.6192,
3.1463

■ 17.4908, 6.6192,
3.1463

■ 113.5839, 7.2698,
10.4880

■ 10.7835, 6.0409,
2.4062

■ 33.7947, 7.3484,
4.6425

■ 1.7617, 30.2740,
1.2332

■ 43.1907, 7.5522,
5.4137

0.0000, NaN, NaN

■ 53.3251, 7.6699,
6.2049

0.0000, NaN, NaN

■ 64.1477, 7.7123,
7.0174

0.0000, NaN, NaN

■ 75.6170, 7.6876,
7.8518

0.0000, NaN, NaN

■ 87.6986, 7.6023,

0.0000, NaN, NaN

100.3627, 7.4616,
9.5872

17.4908, 6.6192,
3.1463

17.4908, 6.6192,
3.1463

16.0410, 8.8325,
3.7324

19.0666, 4.4533,
2.6044

14.7377, 11.0545,
4.3541

20.7488, 2.3558,
2.1069

13.6054, 13.2117,
4.9939

22.5226, 0.3311,
1.6519

12.6689, 15.1937,
5.6203

24.3756, -1.6235,
1.2352

11.9383, 16.8944,
6.1823

26.2976, -3.5138,
0.8526

■ 11.2396, 18.7250,
6.6830

■ 28.2806, -5.3474,
0.4994

■ 11.1115, 19.0804,
6.7808

■ 30.3179, -7.1318,
0.1719

■ 32.4039, -8.8741,
-0.1336

■ 34.5340, -10.5809,
-0.4202

Harmonies

Analogous

The Analogous color harmony consists of three colors that are next to each other on the color wheel.



17.4912, 6.9697, -0.3828



17.4908, 6.6192, 3.1463



17.4912, 4.1466, 5.5111

Triad

The Triadic color harmony groups three colors that are evenly spaced from another and form a triangle on the color wheel.



17.4912, 6.6184, 3.1466



17.4912, -6.2228, 4.9415



17.4912, -2.2652, -7.5000

Complementary

The Complementary color scheme is a pair of colors which are on the opposite of each other on the color wheel.



17.4908, 6.6192, 3.1463



22.4316, -7.1452, -0.3390

Split Complementary

Split-complementary colors differ from the complementary color scheme. The scheme consists of three colors, the original color and two neighbors of the complement color.



17.4912, -5.4941, -5.3053



17.4908, 6.6192, 3.1463



17.4912, -7.6441, 2.1895

Square

The Square scheme is like the rectangle color scheme, but the four colors are evenly spaced on the color wheel.



17.4912, 6.6184, 3.1466



17.4912, -3.3410, 6.3814



17.4912, -7.3893, -1.5697



17.4912, 1.6102, -7.0873

Rectangle

The Rectangle color scheme consists of four colors that form a rectangle on the color wheel.



17.4908, 6.6192, 3.1463



17.4912, 1.7391, 6.3541



17.4912, -7.3893, -1.5697



17.4912, -3.4561, -7.0269

Sweetspot

The Sweet Spot groups the original color and five complimentary colors.



17.4912, 6.6184, 3.1466



28.9261, 1.2895, 2.3661



18.0448, 9.6285, -6.6814



14.9863, 0.7463, 1.2481



64.8100, -3.4581, 3.5212



16.4960, -0.8802, 0.8963

Same Dimension

The Same Dimension uses a secret algorithm to generate beautiful new colors.



17.4912, 6.6184, 3.1466



21.2001, 11.5627, 4.8986



20.0168, 1.5961, 5.8734



11.5740, 0.1955, 0.8560



15.9501, 27.3661, 9.9102



39.9126, 68.3989, 25.4238

Inverse Universe

The Inverse Universe completely reimagines the original color for something new.



17.4912, 6.6184, 3.1466



21.2001, 11.5627, 4.8986



19.4094, -2.4487, -4.7886



11.5740, 0.1955, 0.8560



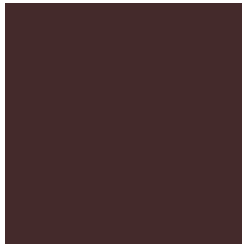
15.9501, 27.3661, 9.9102



39.9126, 68.3989, 25.4238

Previews

White Background



This preview shows how the HunterLab color 17.4908, 6.6192, 3.1463 looks on a white background.

Color Contrast Check

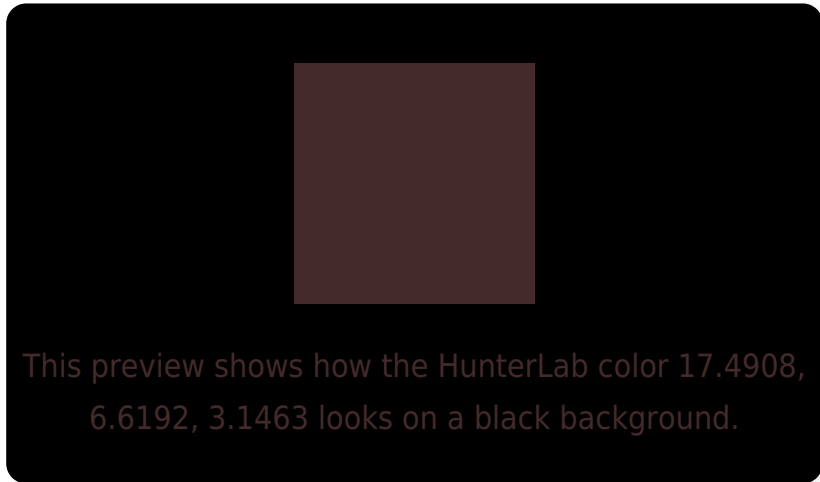
Large Text (above 18pt) WCAG AA ✓ Pass

Any Text WCAG AA ✓ Pass

Large Text (above 18pt) WCAG AAA ✓ Pass

Any Text WCAG AAA ✓ Pass

Black Background



Color Contrast Check

Large Text (above 18pt) WCAG AA × Fail

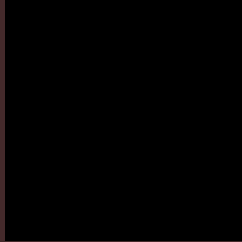
Any Text WCAG AA × Fail

Large Text (above 18pt) WCAG AAA × Fail

Any Text WCAG AAA × Fail

If you want to check with other color combinations, try the [Color Contrast Checker](#).

HunterLab 17.4908, 6.6192, 3.1463 Background



This preview shows how black text looks on a background with the HunterLab color 17.4908, 6.6192, 3.1463.

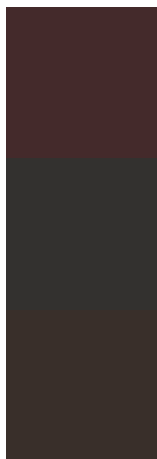


This preview shows how white text looks on a background with the HunterLab color 17.4908, 6.6192,

Color Blindness Simulation

Color vision deficiency is a very complex topic, and I could not describe the different causes any better than Wikipedia does, so if you want to learn more, you should check out their [article about color blindness](#).

Dichromacy



Original Color

17.4908, 6.6192, 3.1463

Protanopia

17.6229, -0.6901, 1.7992

Deuteranopia

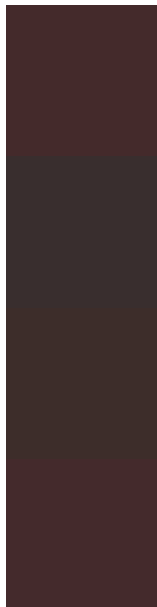
17.5216, 1.1402, 3.4044



Tritanopia

17.5338, 6.8357, 2.5290

Trichromacy



Original Color

17.4908, 6.6192, 3.1463

Protanomaly

17.3813, 2.0089, 1.9285

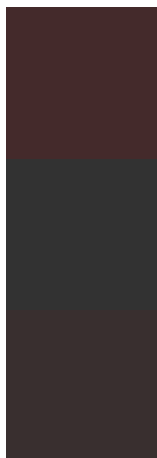
Deuteranomaly

17.4242, 3.1170, 3.3377

Tritanomaly

17.5121, 6.7263, 2.8410

Monochromacy



Original Color

17.4908, 6.6192, 3.1463

Achromatopsia

17.8595, -0.9529, 0.9703

Achromatomaly

17.6299, 1.7189, 1.8492

CSS Examples

Text

The CSS property to change the color of the text to HunterLab 17.4908, 6.6192, 3.1463 is called "color". The color property can be set on classes, ids or directly on the HTML element.

This example shows how text in the color `rgb(68, 42, 43)` looks like.

```
.text, #text, p{  
    color:rgb(68, 42, 43)  
}
```

If you want to add a text shadow in that color use the text-shadow property, you can generate a text shadow directly with our [CSS Text Shadow Generator](#).

Here you see how black text with a 4 pixel rgb(68, 42, 43) colored shadow looks like.

```
.shadow{ text-shadow: 4px 4px 2px rgb(68, 42, 43) }
```

Border

The CSS property to change the border of an element to HunterLab 17.4908, 6.6192, 3.1463 is called "border".

The border property can be set on classes, ids or directly on the HTML element.

This example shows the color as border, it can be applied via the CSS property "border" or "border-color".

```
.border, #border, table{ border:4px solid rgb(68, 42, 43) }
```


If only the border color should be changed use the property `border-color`.

```
.border{ border-color:rgb(68, 42, 43) }
```

If you want to add a box shadow in that color use:

Here you see how a box with a 4 pixel `rgb(68, 42, 43)` colored shadow looks like.

```
.boxshadow{ -moz-box-shadow:4px 4px 4px  
4px rgb(68, 42, 43); -webkit-box-  
shadow:4px 4px 4px 4px rgb(68, 42, 43);  
box-shadow:4px 4px 4px 4px rgb(68, 42, 43)  
}
```

Background

The CSS property to change the background color of an element to HunterLab 17.4908, 6.6192, 3.1463 is called "background". The background property can be set on classes, ids or directly on the HTML element.

```
.background, #background, body{  
background: rgb(68, 42, 43) }
```

If only the background color should be changed can be used:

```
.background{ background-color: rgb(68, 42,  
43) }
```

This example shows the color as background, it is applied via the CSS property "background".

To optimize and compress your CSS code, you can use our [online CSS compressor and optimizer](#) based on csstidy. If you want to create a linear or radial gradient as background or border, check our [CSS Gradient Generator](#).

Hey! You found this booklet
interesting? Support Converting
Colors with the new Membership
Option!

The pro membership hides all ads, plus gives you
double the colors in the color bucket, and more
awesome pro features!

[Learn more, Memberships starting at \\$2.50/m!](#)

**Follow me
on Twitter!**

@ConvertingColor