

Converting Colors

HunterLab(17.5232, 13.8658,
6.8617)

Have a look what the booklet for
HunterLab(17.5232, 13.8658,
6.8617) contains.

HunterLab(17.5408, 13.8111, 6.8985)	3
<i>Conversions</i>	4
<i>Details</i>	6
<i>Harmonies</i>	12
<i>Previews</i>	24
<i>Color Blindness Simulation</i>	28
<i>CSS Examples</i>	31

Color

**HunterLab(17.5408, 13.8111,
6.8985)**

Conversions

Conversions Part 1

Format	Color
Hex	53221E
RGB	83, 34, 30
RGB Percent	33%, 13%, 12%
CMY	0.6745, 0.8667, 0.8824
CMYK	0.00, 0.59, 0.64, 0.67
HSL	5°, 47%, 22%
HSV	5°, 64%, 33%
XYZ	4.3737, 3.0768, 1.5917
YIQ	48.1950, 30.4880, 9.1440

Conversions

Conversions Part 2

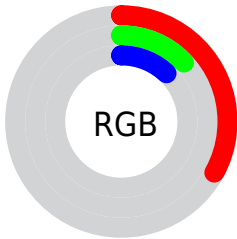
Format	Color
RYB	83, 34, 30
Decimal	5448222
CIELab	20.35, 22.49, 13.77
CIELCh	20, 26.374, 31.470
Yxy	3.0770, 0.4837, 0.3403
Android (android.graphics.Color)	4283638302 (0xFF53221E)
YUV	48.1950, -8.9701, 30.5240
Hunter-Lab	17.5408, 13.8111, 6.8985

Details

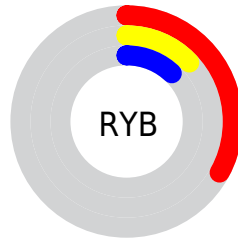
The HunterLab color **17.5408, 13.8111, 6.8985** is a dark color, and the websafe version is hex **663333**. A complement of this color would be **25.4797, -10.3142, -3.5229**, and the grayscale version is **17.2792, -0.9220, 0.9388**.

A 20% lighter version of the original color is **33.8614, 15.9034, 9.8000**, and **6.2889, 10.8048, 3.7936** is the 20% darker color. If you saturate the color by 10%, you get **16.2765, 16.3255, 7.6052**, and if you desaturate by 10%, it is **19.0104, 11.2247, 6.1119**.

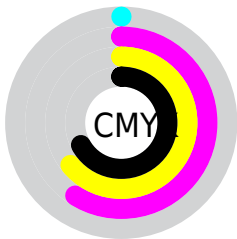
Distribution



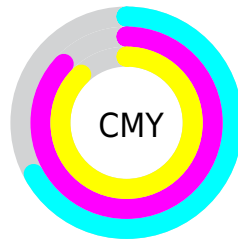
- Red (33%)
- Green (13%)
- Blue (12%)



- Red (33%)
- Yellow (13%)
- Blue (12%)



- Cyan (0%)
- Magenta (59%)
- Yellow (64%)
- Black (67%)



- Cyan (67%)
- Magenta (87%)
- Yellow (88%)

Brightness & Saturation Gradients

These gradients show how the HunterLab color 17.5408, 13.8111, 6.8985 changes by changing the brightness by 10 percent. The first figure shows a shift by +10% for each color and the second figure -10%.

Similar to the brightness gradients but the following saturation gradients show a change of the HunterLab color 17.5408, 13.8111, 6.8985 by changing the saturation by 10% instead.

■ 17.5408, 13.8111,
6.8985

■ 17.5408, 13.8111,
6.8985

■ 113.6772, 18.8274,
19.2419

■ 10.8261, 12.6396,
6.0180

■ 33.8570, 15.6751,
9.8810

■ 1.9671, 49.7253,
1.3770

■ 43.2583, 16.4055,
11.2734

0.0000, NaN, NaN

0.0000, NaN, NaN

■ 53.3977, 17.0241,
12.6316

0.0000, NaN, NaN

■ 64.2248, 17.5443,
13.9684

0.0000, NaN, NaN

■ 75.6985, 17.9769,
15.2925

0.0000, NaN, NaN

0.0000, NaN, NaN

■ 87.7842, 18.3303,

16.6101

0.0000, NaN, NaN

100.4523, 18.6119,
17.9255

17.5408, 13.8111,
6.8985

17.5408, 13.8111,
6.8985

16.2765, 16.3255,
7.6052

19.0104, 11.2247,
6.1119

15.2424, 18.6421,
8.1843

20.6567, 8.6585,
5.2818

14.4538, 20.5809,
8.6659

22.4552, 6.1623,
4.4342

14.0537, 21.5790,
9.0376

24.3842, 3.7602,
3.5852

26.4253, 1.4589,
2.7438

■ 28.5635, -0.7445,
1.9142

■ 30.7864, -2.8579,
1.0979

■ 33.0840, -4.8910,
0.2948

■ 35.4479, -6.8538,
-0.4960

Harmonies

Analogous

The Analogous color harmony consists of three colors that are next to each other on the color wheel.



17.5413, 16.7570, 1.3177



17.5408, 13.8111, 6.8985



17.5413, 6.8337, 9.4635

Triad

The Triadic color harmony groups three colors that are evenly spaced from another and form a triangle on the color wheel.



17.5413, 13.8098, 6.8988



17.5413, -12.2844, 6.5026



17.5413, -0.5496, -20.1927

Complementary

The Complementary color scheme is a pair of colors which are on the opposite of each other on the color wheel.



17.5408, 13.8111, 6.8985



25.4797, -10.3142, -3.5229

Split Complementary

Split-complementary colors differ from the complementary color scheme. The scheme consists of three colors, the original color and two neighbors of the complement color.



17.5413, -7.5533, -16.8221



17.5408, 13.8111, 6.8985



17.5413, -13.5745, 0.5840

Square

The Square scheme is like the rectangle color scheme, but the four colors are evenly spaced on the color wheel.



17.5413, 13.8098, 6.8988



17.5413, -8.1136, 9.3036



17.5413, -12.0029, -8.2687



17.5413, 7.6188, -16.1392

Rectangle

The Rectangle color scheme consists of four colors that form a rectangle on the color wheel.



17.5408, 13.8111, 6.8985



17.5413, 1.3483, 10.1514



17.5413, -12.0029, -8.2687



17.5413, -3.1108, -19.8840

Sweetspot

The Sweet Spot groups the original color and five complimentary colors.



17.5413, 13.8098, 6.8988



32.9285, 3.6251, 4.2143



18.2727, 21.3587, -12.6582



16.1281, 2.0500, 2.1832



67.9972, -3.6282, 3.6944



19.0543, -1.0167, 1.0353

Same Dimension

The Same Dimension uses a secret algorithm to generate beautiful new colors.



17.5413, 13.8098, 6.8988



20.4287, 23.0834, 10.3828



22.7331, 2.7686, 10.8529



13.8709, 0.1569, 1.1667



17.7411, 27.8993, 11.4204



41.9303, 69.2489, 27.0496

Inverse Universe

The Inverse Universe completely reimagines the original color for something new.



25.4797, -10.3142, -3.5229



32.4780, -14.5596, -5.6856



18.5573, -0.0757, -14.7126



14.4838, -1.6207, 0.3837



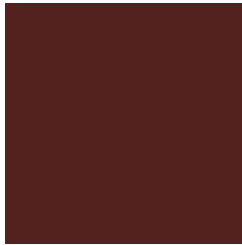
30.8162, -14.7162, -6.7495



73.6130, -34.8541, -16.7698

Previews

White Background



This preview shows how the HunterLab color 17.5408, 13.8111, 6.8985 looks on a white background.

Color Contrast Check

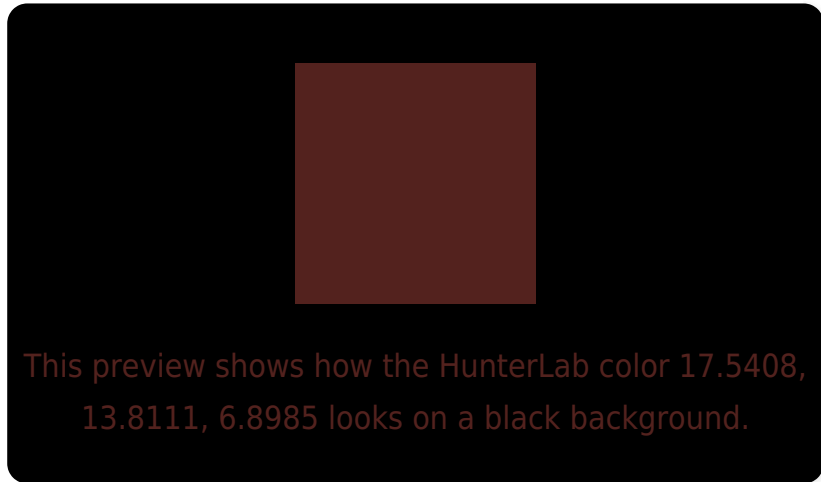
Large Text (above 18pt) WCAG AA ✓ Pass

Any Text WCAG AA ✓ Pass

Large Text (above 18pt) WCAG AAA ✓ Pass

Any Text WCAG AAA ✓ Pass

Black Background



Color Contrast Check

Large Text (above 18pt) WCAG AA × Fail

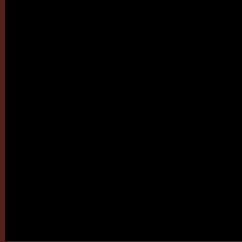
Any Text WCAG AA × Fail

Large Text (above 18pt) WCAG AAA × Fail

Any Text WCAG AAA × Fail

If you want to check with other color combinations, try the [Color Contrast Checker](#).

HunterLab 17.5408, 13.8111, 6.8985 Background



This preview shows how black text looks on a background with the HunterLab color 17.5408, 13.8111, 6.8985.

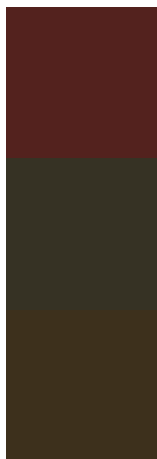


This preview shows how white text looks on a background with the HunterLab color 17.5408, 13.8111,

Color Blindness Simulation

Color vision deficiency is a very complex topic, and I could not describe the different causes any better than Wikipedia does, so if you want to learn more, you should check out their [article about color blindness](#).

Dichromacy



Original Color

17.5408, 13.8111, 6.8985

Protanopia

17.8685, -1.4973, 5.4461

Deuteranopia

17.8601, 0.6369, 7.3695



Tritanopia

17.4587, 14.5818, 5.6132

Trichromacy



Original Color

17.5408, 13.8111, 6.8985

Protanomaly

17.4375, 3.9752, 5.6688

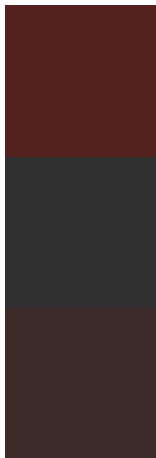
Deuteranomaly

17.5547, 5.2737, 6.9835

Tritanomaly

17.4256, 14.4298, 6.0946

Monochromacy



Original Color

17.5408, 13.8111, 6.8985

Achromatopsia

17.1921, -0.9173, 0.9341

Achromatomaly

16.9704, 3.8403, 3.1951

CSS Examples

Text

The CSS property to change the color of the text to HunterLab 17.5408, 13.8111, 6.8985 is called "color". The color property can be set on classes, ids or directly on the HTML element.

This example shows how text in the color `rgb(83, 34, 30)` looks like.

```
.text, #text, p{  
    color:rgb(83, 34, 30)  
}
```

If you want to add a text shadow in that color use the text-shadow property, you can generate a text shadow directly with our [CSS Text Shadow Generator](#).

Here you see how black text with a 4 pixel rgb(83, 34, 30) colored shadow looks like.

```
.shadow{ text-shadow: 4px 4px 2px rgb(83, 34, 30) }
```

Border

The CSS property to change the border of an element to HunterLab 17.5408, 13.8111, 6.8985 is called "border". The border property can be set on classes, ids or directly on the HTML element.

This example shows the color as border, it can be applied via the CSS property "border" or "border-color".

```
.border, #border, table{ border:4px solid rgb(83, 34, 30) }
```


If only the border color should be changed use the property border-color.

```
.border{ border-color:rgb(83, 34, 30) }
```

If you want to add a box shadow in that color use:

Here you see how a box with a 4 pixel rgb(83, 34, 30) colored shadow looks like.

```
.boxshadow{ -moz-box-shadow:4px 4px 4px  
4px rgb(83, 34, 30); -webkit-box-  
shadow:4px 4px 4px 4px rgb(83, 34, 30);  
box-shadow:4px 4px 4px 4px rgb(83, 34, 30)  
}
```

Background

The CSS property to change the background color of an element to HunterLab 17.5408, 13.8111, 6.8985 is called "background". The background property can be set on classes, ids or directly on the HTML element.

```
.background, #background, body{  
background: rgb(83, 34, 30) }
```

If only the background color should be changed can be used:

```
.background{ background-color: rgb(83, 34,  
30) }
```

This example shows the color as background, it is applied via the CSS property "background".

To optimize and compress your CSS code, you can use our [online CSS compressor and optimizer](#) based on csstidy. If you want to create a linear or radial gradient as background or border, check our [CSS Gradient Generator](#).

Hey! You found this booklet
interesting? Support Converting
Colors with the new Membership
Option!

The pro membership hides all ads, plus gives you
double the colors in the color bucket, and more
awesome pro features!

[Learn more, Memberships starting at \\$2.50/m!](#)

**Follow me
on Twitter!**

@ConvertingColor