

Converting Colors

HunterLab(17.5522, 4.7623,
2.5129)

Have a look what the booklet for
HunterLab(17.5522, 4.7623, 2.5129)
contains.

HunterLab(17.5522, 4.7623, 2.5129)	3
<i>Conversions</i>	4
<i>Details</i>	6
<i>Harmonies</i>	12
<i>Previews</i>	24
<i>Color Blindness Simulation</i>	28
<i>CSS Examples</i>	31

Color

**HunterLab(17.5522, 4.7623,
2.5129)**

Conversions

Conversions Part 1

Format	Color
Hex	402C2D
RGB	64, 44, 45
RGB Percent	25%, 17%, 18%
CMY	0.7490, 0.8274, 0.8235
CMYK	0.00, 0.31, 0.30, 0.75
HSL	357°, 19%, 21%
HSV	357°, 31%, 25%
XYZ	3.4887, 3.0808, 2.8934
YIQ	50.0940, 11.5990, 4.5510

Conversions

Conversions Part 2

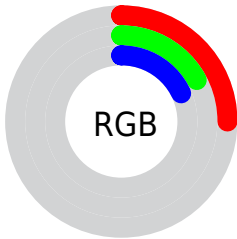
Format	Color
R_{YB}	64, 44, 45
Decimal	4205613
CIE Lab	20.37, 9.42, 3.02
CIE LCh	20, 9.892, 17.750
Yxy	3.0809, 0.3687, 0.3256
Android (android.graphics.Color)	4282395693 (0xFF402C2D)
YUV	50.0940, -2.5113, 12.1956
Hunter-Lab	17.5522, 4.7623, 2.5129

Details

The HunterLab color **17.5522, 4.7623, 2.5129** is a dark color, and the websafe version is hex **333333**. A complement of this color would be **21.3570, -5.8702, 0.0015**, and the grayscale version is **17.8966, -0.9549, 0.9724**.

A 20% lighter version of the original color is **33.9299, 4.9447, 3.6988**, and **4.1300, 7.0728, 2.6687** is the 20% darker color. If you saturate the color by 10%, you get **16.1147, 6.7986, 3.0123**, and if you desaturate by 10%, it is **19.0930, 2.7821, 2.0589**.

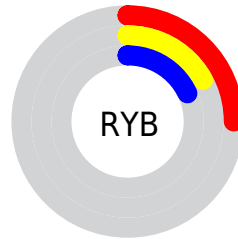
Distribution



Red (25%)

Green (17%)

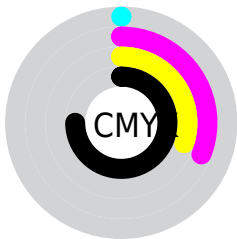
Blue (18%)



Red (25%)

Yellow (17%)

Blue (18%)

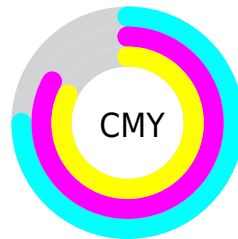


Cyan (0%)

Magenta (31%)

Yellow (30%)

Black (75%)



Cyan (75%)

Magenta (83%)

Yellow (82%)

Brightness & Saturation Gradients

These gradients show how the HunterLab color 17.5522, 4.7623, 2.5129 changes by changing the brightness by 10 percent. The first figure shows a shift by +10% for each color and the second figure -10%.

Similar to the brightness gradients but the following saturation gradients show a change of the HunterLab color 17.5522, 4.7623, 2.5129 by changing the saturation by 10% instead.

■ 17.5522, 4.7623,
2.5129

■ 17.5522, 4.7623,
2.5129

■ 113.6984, 4.1114,
9.1950

■ 10.8358, 4.3831,
1.8918

■ 33.8711, 5.1389,
3.8169

■ 2.0107, 20.3108,
1.4075

■ 43.2736, 5.1845,
4.5068

0.0000, NaN, NaN

0.0000, NaN, NaN

■ 53.4141, 5.1536,
5.2232

0.0000, NaN, NaN

■ 64.2423, 5.0554,
5.9661

0.0000, NaN, NaN

■ 75.7170, 4.8971,
6.7353

0.0000, NaN, NaN

0.0000, NaN, NaN

■ 87.8036, 4.6841,

100.4726, 4.4210,
8.3503

17.5522, 4.7623,
2.5129

17.5522, 4.7623,
2.5129

16.1147, 6.7986,
3.0123

19.0930, 2.7821,
2.0589

14.7967, 8.8713,
3.5548

20.7212, 0.8678,
1.6473

13.6192, 10.9356,
4.1328

22.4254, -0.9818,
1.2743

12.6044, 12.9167,
4.7286

24.1957, -2.7713,
0.9355

11.7742, 14.7067,
5.3119

26.0243, -4.5071,
0.6266

■ 11.0917, 16.3456,
5.8134

■ 27.9046, -6.1959,
0.3436

■ 10.4737, 18.0035,
6.2496

■ 29.8314, -7.8445,
0.0830

■ 31.8003, -9.4587,
-0.1584

■ 33.8074, -11.0440,
-0.3832

Harmonies

Analogous

The Analogous color harmony consists of three colors that are next to each other on the color wheel.



17.5526, 4.9192, -0.2211



17.5522, 4.7623, 2.5129



17.5526, 3.0166, 4.4800

Triad

The Triadic color harmony groups three colors that are evenly spaced from another and form a triangle on the color wheel.



17.5526, 4.7616, 2.5132



17.5526, -4.9191, 4.1927



17.5526, -2.1179, -5.1357

Complementary

The Complementary color scheme is a pair of colors which are on the opposite of each other on the color wheel.



17.5522, 4.7623, 2.5129



21.3570, -5.8702, 0.0015

Split Complementary

Split-complementary colors differ from the complementary color scheme. The scheme consists of three colors, the original color and two neighbors of the complement color.



17.5526, -4.5699, -3.4965



17.5522, 4.7623, 2.5129



17.5526, -6.1146, 2.0558

Square

The Square scheme is like the rectangle color scheme, but the four colors are evenly spaced on the color wheel.



17.5526, 4.7616, 2.5132



17.5526, -2.6236, 5.3345



17.5526, -5.9911, -0.7596



17.5526, 0.8147, -4.9588

Rectangle

The Rectangle color scheme consists of four colors that form a rectangle on the color wheel.



17.5522, 4.7623, 2.5129



17.5526, 1.2488, 5.2300



17.5526, -5.9911, -0.7596



17.5526, -3.0218, -4.7689

Sweetspot

The Sweet Spot groups the original color and five complimentary colors.



17.5526, 4.7616, 2.5132



27.7049, 0.6880, 2.0759



17.9678, 7.0629, -4.8103



14.4575, 0.4553, 1.1090



63.7533, -3.4017, 3.4638



15.6573, -0.8354, 0.8507

Same Dimension

The Same Dimension uses a secret algorithm to generate beautiful new colors.



17.5526, 4.7616, 2.5132



21.7048, 8.2572, 3.7929



19.5401, 0.9033, 4.8255



11.5748, 0.2000, 0.8440



15.9578, 27.3946, 9.7965



39.9198, 68.4256, 25.3168

Inverse Universe

The Inverse Universe completely reimagines the original color for something new.



17.5526, 4.7616, 2.5132



21.7048, 8.2572, 3.7929



19.0739, -2.2121, -3.3630



11.5748, 0.2000, 0.8440



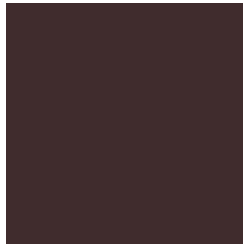
15.9578, 27.3946, 9.7965



39.9198, 68.4256, 25.3168

Previews

White Background



This preview shows how the HunterLab color 17.5522, 4.7623, 2.5129 looks on a white background.

Color Contrast Check

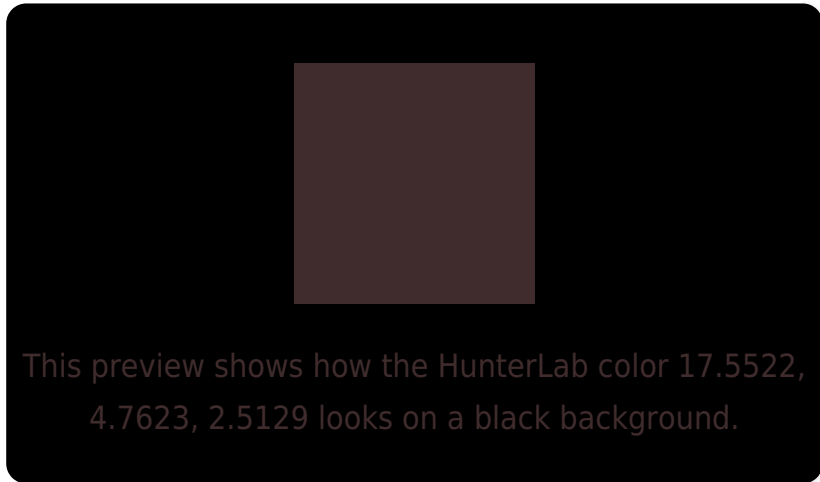
Large Text (above 18pt) WCAG AA ✓ Pass

Any Text WCAG AA ✓ Pass

Large Text (above 18pt) WCAG AAA ✓ Pass

Any Text WCAG AAA ✓ Pass

Black Background



Color Contrast Check

Large Text (above 18pt) WCAG AA × Fail

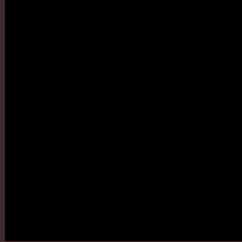
Any Text WCAG AA × Fail

Large Text (above 18pt) WCAG AAA × Fail

Any Text WCAG AAA × Fail

If you want to check with other color combinations, try the [Color Contrast Checker](#).

HunterLab 17.5522, 4.7623, 2.5129 Background



This preview shows how black text looks on a background with the HunterLab color 17.5522, 4.7623, 2.5129.

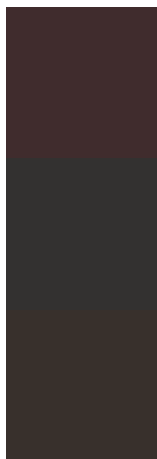


This preview shows how white text looks on a background with the HunterLab color 17.5522, 4.7623,

Color Blindness Simulation

Color vision deficiency is a very complex topic, and I could not describe the different causes any better than Wikipedia does, so if you want to learn more, you should check out their [article about color blindness](#).

Dichromacy



Original Color

17.5522, 4.7623, 2.5129

Protanopia

17.6461, -0.5637, 1.4681

Deuteranopia

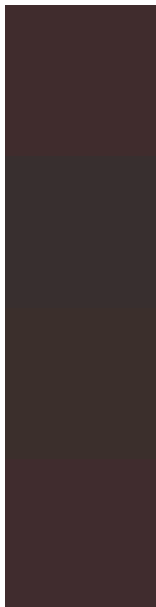
17.7102, 0.6799, 2.9475



Tritanopia

17.5971, 4.9933, 1.8695

Trichromacy



Original Color

17.5522, 4.7623, 2.5129

Protanomaly

17.5471, 1.4429, 1.7508

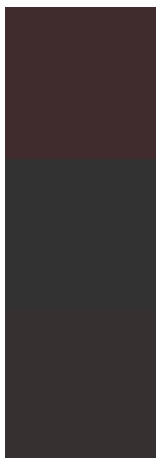
Deuteranomaly

17.7333, 1.9301, 2.9940

Tritanomaly

17.5744, 4.8766, 2.1946

Monochromacy



Original Color

17.5522, 4.7623, 2.5129

Achromatopsia

17.8595, -0.9529, 0.9703

Achromatomaly

17.7187, 0.8868, 1.5768

CSS Examples

Text

The CSS property to change the color of the text to HunterLab 17.5522, 4.7623, 2.5129 is called "color". The color property can be set on classes, ids or directly on the HTML element.

This example shows how text in the color `rgb(64, 44, 45)` looks like.

```
.text, #text, p{  
    color:rgb(64, 44, 45)  
}
```

If you want to add a text shadow in that color use the text-shadow property, you can generate a text shadow directly with our [CSS Text Shadow Generator](#).

Here you see how black text with a 4 pixel rgb(64, 44, 45) colored shadow looks like.

```
.shadow{ text-shadow: 4px 4px 2px rgb(64, 44, 45) }
```

Border

The CSS property to change the border of an element to HunterLab 17.5522, 4.7623, 2.5129 is called "border".

The border property can be set on classes, ids or directly on the HTML element.

This example shows the color as border, it can be applied via the CSS property "border" or "border-color".

```
.border, #border, table{ border:4px solid rgb(64, 44, 45) }
```


If only the border color should be changed use the property `border-color`.

```
.border{ border-color:rgb(64, 44, 45) }
```

If you want to add a box shadow in that color use:

Here you see how a box with a 4 pixel `rgb(64, 44, 45)` colored shadow looks like.

```
.boxshadow{ -moz-box-shadow:4px 4px 4px  
4px rgb(64, 44, 45); -webkit-box-  
shadow:4px 4px 4px 4px rgb(64, 44, 45);  
box-shadow:4px 4px 4px 4px rgb(64, 44, 45)  
}
```

Background

The CSS property to change the background color of an element to HunterLab 17.5522, 4.7623, 2.5129 is called "background". The background property can be set on classes, ids or directly on the HTML element.

```
.background, #background, body{  
background: rgb(64, 44, 45) }
```

If only the background color should be changed can be used:

```
.background{ background-color: rgb(64, 44,  
45) }
```

This example shows the color as background, it is applied via the CSS property "background".

To optimize and compress your CSS code, you can use our [online CSS compressor and optimizer](#) based on csstidy. If you want to create a linear or radial gradient as background or border, check our [CSS Gradient Generator](#).

Hey! You found this booklet interesting? Support Converting Colors with the new Membership Option!

The pro membership hides all ads, plus gives you double the colors in the color bucket, and more awesome pro features!

[Learn more, Memberships starting at \\$2.50/m!](#)

**Follow me
on Twitter!**

@ConvertingColor