

Converting Colors

HunterLab(17.5680, 7.8163,
1.2736)

Have a look what the booklet for
HunterLab(17.5680, 7.8163, 1.2736)
contains.

HunterLab(17.5295, 8.0340, 1.1142)	3
<i>Conversions</i>	4
<i>Details</i>	6
<i>Harmonies</i>	12
<i>Previews</i>	24
<i>Color Blindness Simulation</i>	28
<i>CSS Examples</i>	31

Color

**HunterLab(17.5295, 8.0340,
1.1142)**

Conversions

Conversions Part 1

Format	Color
Hex	452931
RGB	69, 41, 49
RGB Percent	27%, 16%, 19%
CMY	0.7294, 0.8392, 0.8078
CMYK	0.00, 0.41, 0.29, 0.73
HSL	343°, 25%, 22%
HSV	343°, 41%, 27%
XYZ	3.8016, 3.0728, 3.2985
YIQ	50.2840, 14.1200, 8.4240

Conversions

Conversions Part 2

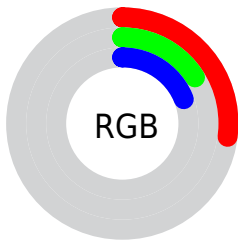
Format	Color
R_{YB}	69, 41, 49
Decimal	4532529
CIE Lab	20.33, 14.38, 0.30
CIE LCh	20, 14.386, 1.184
Yxy	3.0730, 0.3737, 0.3021
Android (android.graphics.Color)	4282722609 (0xFF452931)
YUV	50.2840, -0.6330, 16.4139
Hunter-Lab	17.5295, 8.0340, 1.1142

Details

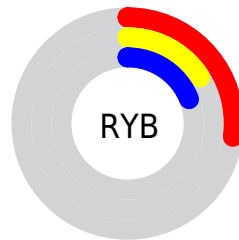
The HunterLab color **17.5295, 8.0340, 1.1142** is a dark color, and the websafe version is hex **333333**. A complement of this color would be **22.5048, -8.5689, 2.0855**, and the grayscale version is **17.9536, -0.9580, 0.9755**.

A 20% lighter version of the original color is **33.9030, 8.8251, 2.1119**, and **4.9907, 8.5906, 2.8845** is the 20% darker color. If you saturate the color by 10%, you get **16.1167, 10.3954, 1.3210**, and if you desaturate by 10%, it is **19.0704, 5.6714, 1.0269**.

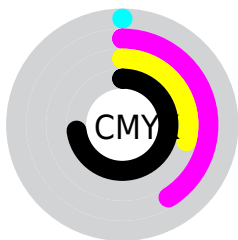
Distribution



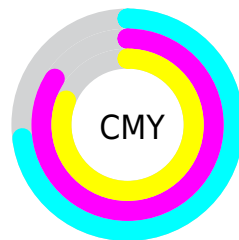
- Red (27%)
- Green (16%)
- Blue (19%)



- Red (27%)
- Yellow (16%)
- Blue (19%)



- Cyan (0%)
- Magenta (41%)
- Yellow (29%)
- Black (73%)



- Cyan (73%)
- Magenta (84%)
- Yellow (81%)

Brightness & Saturation Gradients

These gradients show how the HunterLab color 17.5295, 8.0340, 1.1142 changes by changing the brightness by 10 percent. The first figure shows a shift by +10% for each color and the second figure -10%.

Similar to the brightness gradients but the following saturation gradients show a change of the HunterLab color 17.5295, 8.0340, 1.1142 by changing the saturation by 10% instead.

■ 17.5295, 8.0340,
1.1142

■ 17.5295, 8.0340,
1.1142

■ 113.6560, 9.6157,
6.4866

■ 10.8164, 7.3194,
0.7250

■ 33.8429, 9.0116,
2.0422

■ 1.9224, 32.4979,
0.7456

■ 43.2430, 9.3281,
2.5710

0.0000, NaN, NaN

■ 53.3812, 9.5523,
3.1387

0.0000, NaN, NaN

■ 64.2073, 9.6958,
3.7428

0.0000, NaN, NaN

■ 75.6800, 9.7675,
4.3813

0.0000, NaN, NaN

■ 87.7648, 9.7745,

0.0000, NaN, NaN

100.4320, 9.7223,
5.7546

17.5295, 8.0340,
1.1142

17.5295, 8.0340,
1.1142

16.1167, 10.3954,
1.3210

19.0704, 5.6714,
1.0269

14.8519, 12.7020,
1.6619

20.7198, 3.3414,
1.0411

13.7586, 14.8645,
2.1467

22.4630, 1.0579,
1.1413

12.8591, 16.7620,
2.7721

24.2875, -1.1744,
1.3135

12.1400, 18.3576,
3.4861

26.1828, -3.3566,
1.5462

■ 11.4660, 20.0675,
4.0636

■ 28.1406, -5.4926,
1.8297

■ 30.1541, -7.5875,
2.1564

■ 32.2174, -9.6468,
2.5198

■ 34.3260, -11.6757,
2.9150

Harmonies

Analogous

The Analogous color harmony consists of three colors that are next to each other on the color wheel.



17.5299, 6.8380, -3.2349



17.5295, 8.0340, 1.1142



17.5299, 6.6406, 4.5301

Triad

The Triadic color harmony groups three colors that are evenly spaced from another and form a triangle on the color wheel.



17.5299, 8.0332, 1.1146



17.5299, -4.9813, 6.3995



17.5299, -4.7143, -7.3434

Complementary

The Complementary color scheme is a pair of colors which are on the opposite of each other on the color wheel.



17.5295, 8.0340, 1.1142



22.5048, -8.5689, 2.0855

Split Complementary

Split-complementary colors differ from the complementary color scheme. The scheme consists of three colors, the original color and two neighbors of the complement color.



17.5299, -7.4112, -3.5817



17.5295, 8.0340, 1.1142



17.5299, -7.5547, 4.3114

Square

The Square scheme is like the rectangle color scheme, but the four colors are evenly spaced on the color wheel.



17.5299, 8.0332, 1.1146



17.5299, -1.1053, 7.0963



17.5299, -8.4008, 0.7923



17.5299, -0.7666, -8.7671

Rectangle

The Rectangle color scheme consists of four colors that form a rectangle on the color wheel.



17.5295, 8.0340, 1.1142



17.5299, 4.5024, 6.0067



17.5299, -8.4008, 0.7923



17.5299, -5.7834, -6.2722

Sweetspot

The Sweet Spot groups the original color and five complimentary colors.



17.5299, 8.0332, 1.1146



28.7492, 1.9337, 1.4505



17.3065, 8.5682, -8.4743



14.9102, 1.0715, 0.7513



64.8100, -3.4581, 3.5212



16.4960, -0.8802, 0.8963

Same Dimension

The Same Dimension uses a secret algorithm to generate beautiful new colors.



17.5299, 8.0332, 1.1146



20.8766, 13.6224, 1.7299



18.5112, 4.7802, 4.7705



12.3304, 0.3358, 0.6321



16.6249, 28.9869, 6.7412



40.8687, 70.9180, 19.2060

Inverse Universe

The Inverse Universe completely reimagines the original color for something new.



17.5299, 8.0332, 1.1146



20.8766, 13.6224, 1.7299



21.2148, -5.2498, -2.7546



12.3304, 0.3358, 0.6321



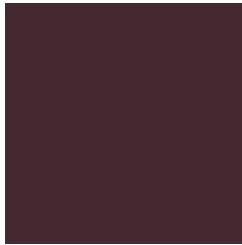
16.6249, 28.9869, 6.7412



40.8687, 70.9180, 19.2060

Previews

White Background



This preview shows how the HunterLab color 17.5295, 8.0340, 1.1142 looks on a white background.

Color Contrast Check

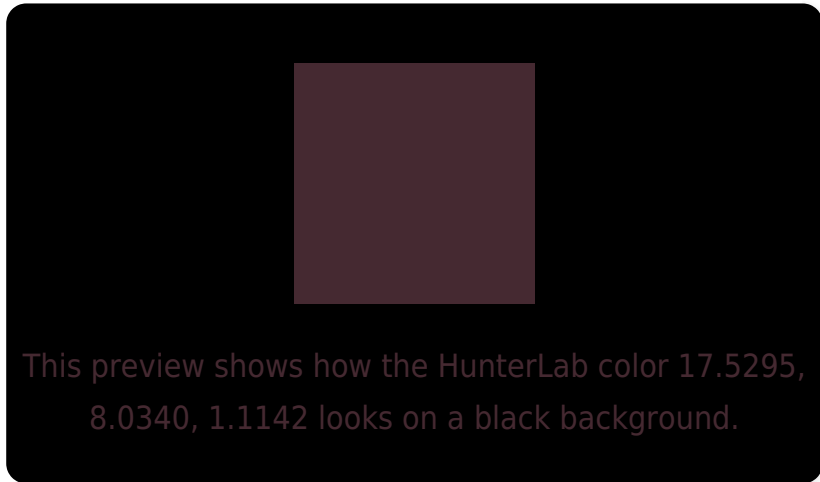
Large Text (above 18pt) WCAG AA ✓ Pass

Any Text WCAG AA ✓ Pass

Large Text (above 18pt) WCAG AAA ✓ Pass

Any Text WCAG AAA ✓ Pass

Black Background



Color Contrast Check

Large Text (above 18pt) WCAG AA × Fail

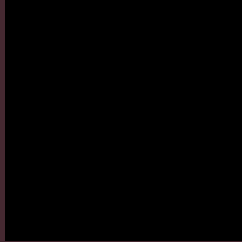
Any Text WCAG AA × Fail

Large Text (above 18pt) WCAG AAA × Fail

Any Text WCAG AAA × Fail

If you want to check with other color combinations, try the [Color Contrast Checker](#).

HunterLab 17.5295, 8.0340, 1.1142 Background



This preview shows how black text looks on a background with the HunterLab color 17.5295, 8.0340, 1.1142.



This preview shows how white text looks on a background with the HunterLab color 17.5295, 8.0340,

Color Blindness Simulation

Color vision deficiency is a very complex topic, and I could not describe the different causes any better than Wikipedia does, so if you want to learn more, you should check out their [article about color blindness](#).

Dichromacy



Original Color

17.5295, 8.0340, 1.1142

Protanopia

17.6520, -0.2432, -0.8496

Deuteranopia

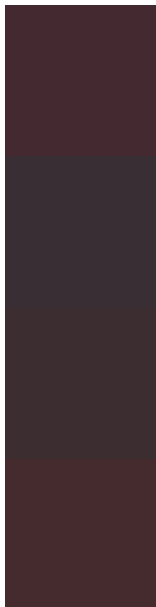
17.7187, 0.8868, 1.5768



Tritanopia

17.6369, 7.1479, 2.6471

Trichromacy



Original Color

17.5295, 8.0340, 1.1142

Protanomaly

17.4433, 2.5040, -0.2505

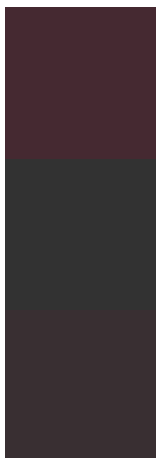
Deuteranomaly

17.4666, 3.5191, 1.3325

Tritanomaly

17.6590, 7.2587, 2.3301

Monochromacy



Original Color

17.5295, 8.0340, 1.1142

Achromatopsia

17.8595, -0.9529, 0.9703

Achromatomaly

17.7008, 2.0959, 0.8361

CSS Examples

Text

The CSS property to change the color of the text to HunterLab 17.5295, 8.0340, 1.1142 is called "color". The color property can be set on classes, ids or directly on the HTML element.

This example shows how text in the color `rgb(69, 41, 49)` looks like.

```
.text, #text, p{  
    color:rgb(69, 41, 49)  
}
```

If you want to add a text shadow in that color use the text-shadow property, you can generate a text shadow directly with our [CSS Text Shadow Generator](#).

Here you see how black text with a 4 pixel rgb(69, 41, 49) colored shadow looks like.

```
.shadow{ text-shadow: 4px 4px 2px rgb(69, 41, 49) }
```

Border

The CSS property to change the border of an element to HunterLab 17.5295, 8.0340, 1.1142 is called "border". The border property can be set on classes, ids or directly on the HTML element.

This example shows the color as border, it can be applied via the CSS property "border" or "border-color".

```
.border, #border, table{ border:4px solid rgb(69, 41, 49) }
```


If only the border color should be changed use the property border-color.

```
.border{ border-color:rgb(69, 41, 49) }
```

If you want to add a box shadow in that color use:

Here you see how a box with a 4 pixel rgb(69, 41, 49) colored shadow looks like.

```
.boxshadow{ -moz-box-shadow:4px 4px 4px  
4px rgb(69, 41, 49); -webkit-box-  
shadow:4px 4px 4px 4px rgb(69, 41, 49);  
box-shadow:4px 4px 4px 4px rgb(69, 41, 49)  
}
```

Background

The CSS property to change the background color of an element to HunterLab 17.5295, 8.0340, 1.1142 is called "background". The background property can be set on classes, ids or directly on the HTML element.

```
.background, #background, body{  
background: rgb(69, 41, 49) }
```

If only the background color should be changed can be used:

```
.background{ background-color: rgb(69, 41,  
49) }
```

This example shows the color as background, it is applied via the CSS property "background".

To optimize and compress your CSS code, you can use our [online CSS compressor and optimizer](#) based on csstidy. If you want to create a linear or radial gradient as background or border, check our [CSS Gradient Generator](#).

Hey! You found this booklet interesting? Support Converting Colors with the new Membership Option!

The pro membership hides all ads, plus gives you double the colors in the color bucket, and more awesome pro features!

[Learn more, Memberships starting at \\$2.50/m!](#)

**Follow me
on Twitter!**

@ConvertingColor