

Converting Colors

HunterLab(17.6103, 10.4923,
4.7897)

Have a look what the booklet for
HunterLab(17.6103, 10.4923,
4.7897) contains.

HunterLab(17.5005, 10.4123, 4.7535)	3
<i>Conversions</i>	4
<i>Details</i>	6
<i>Harmonies</i>	12
<i>Previews</i>	24
<i>Color Blindness Simulation</i>	28
<i>CSS Examples</i>	31

Color

**HunterLab(17.5005, 10.4123,
4.7535)**

Conversions

Conversions Part 1

Format	Color
Hex	4C2626
RGB	76, 38, 38
RGB Percent	30%, 15%, 15%
CMY	0.7020, 0.8510, 0.8510
CMYK	0.00, 0.50, 0.50, 0.70
HSL	0°, 33%, 22%
HSV	0°, 50%, 30%
XYZ	4.0235, 3.0627, 2.2128
YIQ	49.3620, 22.6480, 8.0560

Conversions

Conversions Part 2

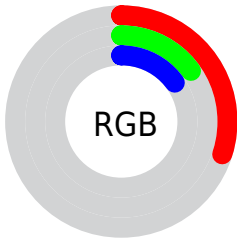
Format	Color
RYB	76, 38, 38
Decimal	4990502
CIELab	20.29, 17.82, 8.00
CIElCh	20, 19.531, 24.167
Yxy	3.0628, 0.4327, 0.3294
Android (android.graphics.Color)	4283180582 (0xFF4C2626)
YUV	49.3620, -5.6015, 23.3615
Hunter-Lab	17.5005, 10.4123, 4.7535

Details

The HunterLab color **17.5005, 10.4123, 4.7535** is a dark color, and the websafe version is hex **663333**. A complement of this color would be **24.7032, -9.3550, -1.3524**, and the grayscale version is **17.6593, -0.9423, 0.9595**.

A 20% lighter version of the original color is **33.8780, 11.7596, 6.7592**, and **5.5612, 9.5631, 3.2880** is the 20% darker color. If you saturate the color by 10%, you get **16.0666, 12.9294, 5.4942**, and if you desaturate by 10%, it is **19.1146, 7.8937, 4.0265**.

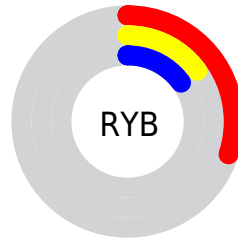
Distribution



Red (30%)

Green (15%)

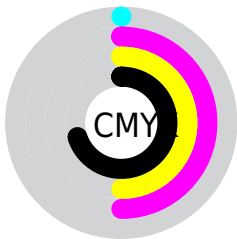
Blue (15%)



Red (30%)

Yellow (15%)

Blue (15%)

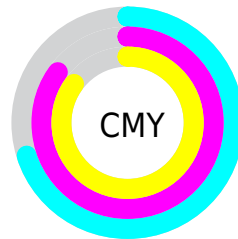


Cyan (0%)

Magenta (50%)

Yellow (50%)

Black (70%)



Cyan (70%)

Magenta (85%)

Yellow (85%)

Brightness & Saturation Gradients

These gradients show how the HunterLab color 17.5005, 10.4123, 4.7535 changes by changing the brightness by 10 percent. The first figure shows a shift by +10% for each color and the second figure -10%.

Similar to the brightness gradients but the following saturation gradients show a change of the HunterLab color 17.5005, 10.4123, 4.7535 by changing the saturation by 10% instead.

■ 17.5005, 10.4123,
4.7535

■ 17.5005, 10.4123,
4.7535

■ 113.6020, 13.4859,
13.9698

■ 10.7918, 9.4888,
3.8085

■ 33.8068, 11.7815,
6.8020

■ 1.8035, 42.9590,
1.2624

■ 43.2038, 12.2783,
7.8052

0.0000, NaN, NaN

0.0000, NaN, NaN

■ 53.3392, 12.6736,
8.8089

0.0000, NaN, NaN

■ 64.1627, 12.9798,
9.8184

0.0000, NaN, NaN

■ 75.6328, 13.2071,
10.8372

0.0000, NaN, NaN

0.0000, NaN, NaN

■ 87.7152, 13.3631,

11.8678

0.0000, NaN, NaN

100.3801, 13.4543,
12.9116

17.5005, 10.4123,
4.7535

17.5005, 10.4123,
4.7535

16.0666, 12.9294,
5.4942

19.1146, 7.8937,
4.0265

14.8411, 15.3503,
6.2171

20.8807, 5.4326,
3.3291

13.8528, 17.5307,
6.8764

22.7763, 3.0542,
2.6687

13.1081, 19.3386,
7.4285

24.7824, 0.7661,
2.0466

12.3960, 21.2264,
8.0099

26.8836, -1.4346,
1.4606

■ 12.3959, 21.2266,
8.0099

■ 29.0673, -3.5552,
0.9074

■ 31.3236, -5.6052,
0.3831

■ 33.6441, -7.5941,
-0.1161

■ 36.0221, -9.5309,
-0.5937

Harmonies

Analogous

The Analogous color harmony consists of three colors that are next to each other on the color wheel.



17.5009, 11.5597, -0.1570



17.5005, 10.4123, 4.7535



17.5009, 6.0633, 7.5421

Triad

The Triadic color harmony groups three colors that are evenly spaced from another and form a triangle on the color wheel.



17.5009, 10.4113, 4.7538



17.5009, -9.0690, 6.0832



17.5009, -2.0507, -13.1779

Complementary

The Complementary color scheme is a pair of colors which are on the opposite of each other on the color wheel.



17.5005, 10.4123, 4.7535



24.7032, -9.3550, -1.3524

Split Complementary

Split-complementary colors differ from the complementary color scheme. The scheme consists of three colors, the original color and two neighbors of the complement color.



17.5009, -6.9811, -9.9775



17.5005, 10.4123, 4.7535



17.5009, -10.6810, 1.9941

Square

The Square scheme is like the rectangle color scheme, but the four colors are evenly spaced on the color wheel.



17.5009, 10.4113, 4.7538



17.5009, -5.2589, 8.1169



17.5009, -9.9693, -3.9554



17.5009, 3.8548, -11.7088

Rectangle

The Rectangle color scheme consists of four colors that form a rectangle on the color wheel.



17.5005, 10.4123, 4.7535



17.5009, 2.2040, 8.3801



17.5009, -9.9693, -3.9554



17.5009, -3.8668, -12.5873

Sweetspot

The Sweet Spot groups the original color and five complimentary colors.



17.5009, 10.4113, 4.7538



31.2255, 2.6801, 3.1535



18.5595, 15.3990, -10.1370



15.8522, 1.5530, 1.6654



66.9319, -3.5713, 3.6365



18.1947, -0.9708, 0.9886

Same Dimension

The Same Dimension uses a secret algorithm to generate beautiful new colors.



17.5009, 10.4113, 4.7538



20.8153, 17.8184, 7.4759



21.4540, 2.3381, 8.1930



13.0511, 0.2438, 1.0243



16.8074, 28.7814, 10.8605



40.9153, 70.0671, 26.4385

Inverse Universe

The Inverse Universe completely reimagines the original color for something new.



24.7032, -9.3550, -1.3524



32.1944, -13.9554, -2.3538



19.6473, -1.9758, -8.5616



13.7520, -1.6260, 0.4481



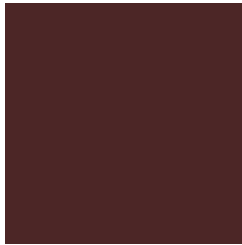
32.3434, -17.1459, -3.4135



78.7363, -41.7394, -8.3102

Previews

White Background



This preview shows how the HunterLab color 17.5005, 10.4123, 4.7535 looks on a white background.

Color Contrast Check

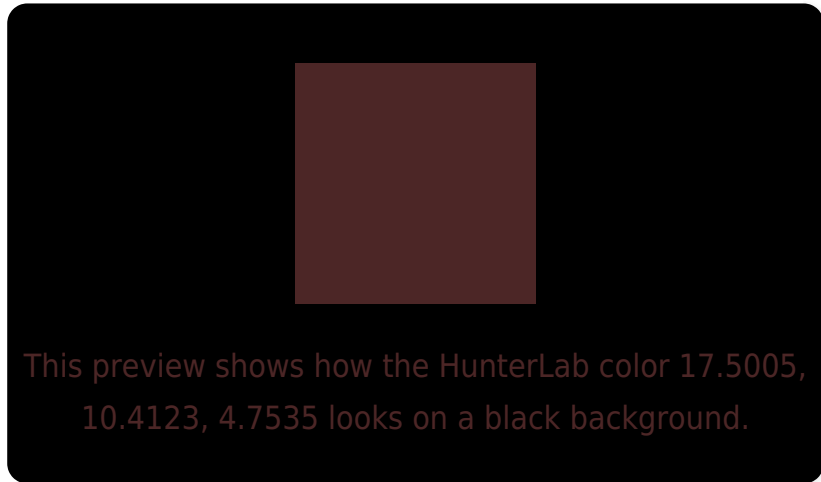
Large Text (above 18pt) WCAG AA ✓ Pass

Any Text WCAG AA ✓ Pass

Large Text (above 18pt) WCAG AAA ✓ Pass

Any Text WCAG AAA ✓ Pass

Black Background



Color Contrast Check

Large Text (above 18pt) WCAG AA × Fail

Any Text WCAG AA × Fail

Large Text (above 18pt) WCAG AAA × Fail

Any Text WCAG AAA × Fail

If you want to check with other color combinations, try the [Color Contrast Checker](#).

HunterLab 17.5005, 10.4123, 4.7535 Background



This preview shows how black text looks on a background with the HunterLab color 17.5005, 10.4123, 4.7535.



This preview shows how white text looks on a background with the HunterLab color 17.5005, 10.4123,

Color Blindness Simulation

Color vision deficiency is a very complex topic, and I could not describe the different causes any better than Wikipedia does, so if you want to learn more, you should check out their [article about color blindness](#).

Dichromacy



Original Color

17.5005, 10.4123, 4.7535

Protanopia

17.6100, -0.9099, 3.1403

Deuteranopia

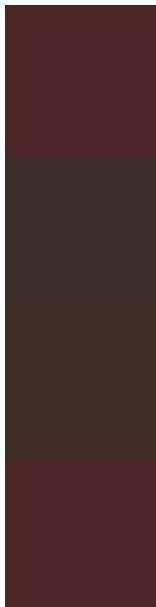
17.8075, 0.7028, 5.4281



Tritanopia

17.5383, 10.5949, 4.2060

Trichromacy



Original Color

17.5005, 10.4123, 4.7535

Protanomaly

17.4039, 3.0104, 3.6303

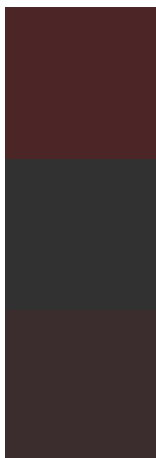
Deuteranomaly

17.4893, 4.2438, 4.9176

Tritanomaly

17.5192, 10.5025, 4.4831

Monochromacy



Original Color

17.5005, 10.4123, 4.7535

Achromatopsia

17.5253, -0.9351, 0.9522

Achromatomaly

17.3091, 2.8708, 2.2121

CSS Examples

Text

The CSS property to change the color of the text to HunterLab 17.5005, 10.4123, 4.7535 is called "color". The color property can be set on classes, ids or directly on the HTML element.

This example shows how text in the color `rgb(76, 38, 38)` looks like.

```
.text, #text, p{  
    color:rgb(76, 38, 38)  
}
```

If you want to add a text shadow in that color use the text-shadow property, you can generate a text shadow directly with our [CSS Text Shadow Generator](#).

Here you see how black text with a 4 pixel rgb(76, 38, 38) colored shadow looks like.

```
.shadow{ text-shadow: 4px 4px 2px rgb(76, 38, 38) }
```

Border

The CSS property to change the border of an element to HunterLab 17.5005, 10.4123, 4.7535 is called "border". The border property can be set on classes, ids or directly on the HTML element.

This example shows the color as border, it can be applied via the CSS property "border" or "border-color".

```
.border, #border, table{ border:4px solid rgb(76, 38, 38) }
```


If only the border color should be changed use the property `border-color`.

```
.border{ border-color:rgb(76, 38, 38) }
```

If you want to add a box shadow in that color use:

Here you see how a box with a 4 pixel `rgb(76, 38, 38)` colored shadow looks like.

```
.boxshadow{ -moz-box-shadow:4px 4px 4px  
4px rgb(76, 38, 38); -webkit-box-  
shadow:4px 4px 4px 4px rgb(76, 38, 38);  
box-shadow:4px 4px 4px 4px rgb(76, 38, 38)  
}
```

Background

The CSS property to change the background color of an element to HunterLab 17.5005, 10.4123, 4.7535 is called "background". The background property can be set on classes, ids or directly on the HTML element.

```
.background, #background, body{  
background: rgb(76, 38, 38) }
```

If only the background color should be changed can be used:

```
.background{ background-color: rgb(76, 38,  
38) }
```

This example shows the color as background, it is applied via the CSS property "background".

To optimize and compress your CSS code, you can use our [online CSS compressor and optimizer](#) based on csstidy. If you want to create a linear or radial gradient as background or border, check our [CSS Gradient Generator](#).

Hey! You found this booklet interesting? Support Converting Colors with the new Membership Option!

The pro membership hides all ads, plus gives you double the colors in the color bucket, and more awesome pro features!

[Learn more, Memberships starting at \\$2.50/m!](#)

**Follow me
on Twitter!**

@ConvertingColor