

Converting Colors

HunterLab(17.6377, 6.7444,
5.8936)

Have a look what the booklet for
HunterLab(17.6377, 6.7444, 5.8936)
contains.

HunterLab(17.6381, 6.7321, 5.8992)	3
<i>Conversions</i>	4
<i>Details</i>	6
<i>Harmonies</i>	12
<i>Previews</i>	24
<i>Color Blindness Simulation</i>	28
<i>CSS Examples</i>	31

Color

**HunterLab(17.6381, 6.7321,
5.8992)**

Conversions

Conversions Part 1

Format	Color
Hex	472A22
RGB	71, 42, 34
RGB Percent	28%, 16%, 13%
CMY	0.7216, 0.8353, 0.8667
CMYK	0.00, 0.41, 0.52, 0.72
HSL	13°, 35%, 21%
HSV	13°, 52%, 28%
XYZ	3.7152, 3.1110, 1.9180
YIQ	49.7590, 19.8520, 3.6600

Conversions

Conversions Part 2

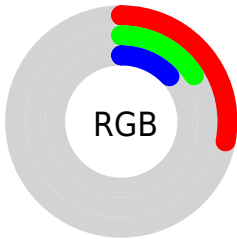
Format	Color
R_{YB}	71, 44, 34
Decimal	4663842
CIE Lab	20.48, 12.43, 10.86
CIE LCh	20, 16.510, 41.147
Yxy	3.1112, 0.4249, 0.3558
Android (android.graphics.Color)	4282853922 (0xFF472A22)
YUV	49.7590, -7.7692, 18.6284
Hunter-Lab	17.6381, 6.7321, 5.8992

Details

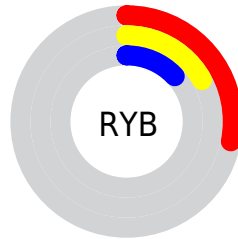
The HunterLab color **17.6381, 6.7321, 5.8992** is a dark color, and the websafe version is hex **663333**. A complement of this color would be **20.8563, -5.9063, -4.1984**, and the grayscale version is **17.7997, -0.9497, 0.9671**.

A 20% lighter version of the original color is **34.0506, 7.2495, 8.5584**, and **4.8271, 8.2666, 3.1192** is the 20% darker color. If you saturate the color by 10%, you get **16.4520, 8.5259, 6.5718**, and if you desaturate by 10%, it is **18.9183, 5.0101, 5.1417**.

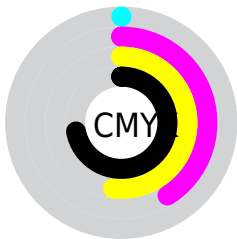
Distribution



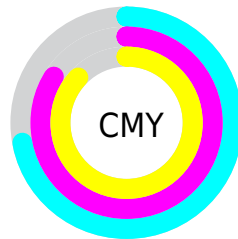
- Red (28%)
- Green (16%)
- Blue (13%)



- Red (28%)
- Yellow (17%)
- Blue (13%)



- Cyan (0%)
- Magenta (41%)
- Yellow (52%)
- Black (72%)



- Cyan (72%)
- Magenta (84%)
- Yellow (87%)

Brightness & Saturation Gradients

These gradients show how the HunterLab color 17.6381, 6.7321, 5.8992 changes by changing the brightness by 10 percent. The first figure shows a shift by +10% for each color and the second figure -10%.

Similar to the brightness gradients but the following saturation gradients show a change of the HunterLab color 17.6381, 6.7321, 5.8992 by changing the saturation by 10% instead.

■ 17.6381, 6.7321,
5.8992

■ 17.6381, 6.7321,
5.8992

■ 113.8584, 7.4373,
16.6442

■ 10.9089, 6.1468,
4.8958

■ 33.9781, 7.4748,
8.4017

■ 2.3142, 23.2853,
1.6200

■ 43.3897, 7.6851,
9.5948

0.0000, NaN, NaN

0.0000, NaN, NaN

■ 53.5386, 7.8091,
10.7718

0.0000, NaN, NaN

■ 64.3747, 7.8576,
11.9416

0.0000, NaN, NaN

■ 75.8568, 7.8388,
13.1101

0.0000, NaN, NaN

0.0000, NaN, NaN

■ 87.9505, 7.7591,

14.2816

0.0000, NaN, NaN

■ 100.6262, 7.6239,
15.4589

■ 17.6381, 6.7321,
5.8992

■ 17.6381, 6.7321,
5.8992

■ 16.4520, 8.5259,
6.5718

■ 18.9183, 5.0101,
5.1417

■ 15.3713, 10.3734,
7.1363

■ 20.2802, 3.3718,
4.3169

■ 14.4098, 12.2366,
7.5681

■ 21.7142, 1.8176,
3.4395

■ 13.5765, 14.0395,
7.9092

■ 23.2121, 0.3445,
2.5206

■ 13.0052, 15.3205,
8.2820

■ 24.7668, -1.0532,
1.5685

■ 26.3722, -2.3822,
0.5894

■ 28.0232, -3.6496,
-0.4121

■ 29.7155, -4.8621,
-1.4327

■ 31.4455, -6.0259,
-2.4698

Harmonies

Analogous

The Analogous color harmony consists of three colors that are next to each other on the color wheel.



17.6385, 9.2905, 2.6070



17.6381, 6.7321, 5.8992



17.6385, 2.2080, 7.5120

Triad

The Triadic color harmony groups three colors that are evenly spaced from another and form a triangle on the color wheel.



17.6385, 6.7312, 5.8995



17.6385, -9.0048, 3.6186



17.6385, 0.9173, -10.2964

Complementary

The Complementary color scheme is a pair of colors which are on the opposite of each other on the color wheel.



17.6381, 6.7321, 5.8992



20.8563, -5.9063, -4.1984

Split Complementary

Split-complementary colors differ from the complementary color scheme. The scheme consists of three colors, the original color and two neighbors of the complement color.



17.6385, -3.8856, -9.8069



17.6381, 6.7321, 5.8992



17.6385, -9.2697, -0.8627

Square

The Square scheme is like the rectangle color scheme, but the four colors are evenly spaced on the color wheel.



17.6385, 6.7312, 5.8995



17.6385, -6.7253, 6.4652



17.6385, -7.4932, -6.0170



17.6385, 5.6979, -7.2137

Rectangle

The Rectangle color scheme consists of four colors that form a rectangle on the color wheel.



17.6381, 6.7321, 5.8992



17.6385, -1.1304, 7.7777



17.6385, -7.4932, -6.0170



17.6385, -0.7530, -10.5621

Sweetspot

The Sweet Spot groups the original color and five complimentary colors.



17.6385, 6.7312, 5.8995



29.2952, 1.2991, 3.8223



16.8799, 13.6542, -6.1880



14.7260, 0.7346, 1.9805



64.8100, -3.4581, 3.5212



16.4960, -0.8802, 0.8963

Same Dimension

The Same Dimension uses a secret algorithm to generate beautiful new colors.



17.6385, 6.7312, 5.8995



20.9082, 11.8816, 8.8073



21.6249, -0.7161, 9.1632



12.4779, -0.0814, 1.1502



17.9812, 22.8583, 11.4801



43.0421, 60.5541, 27.5825

Inverse Universe

The Inverse Universe completely reimagines the original color for something new.



20.8563, -5.9063, -4.1984



25.9672, -8.3315, -7.1590



16.3691, 1.2249, -11.4841



12.7771, -1.2298, 0.2176



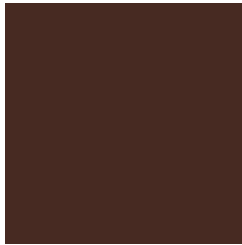
25.1993, -8.7237, -12.6650



61.0996, -20.0039, -33.1864

Previews

White Background



This preview shows how the HunterLab color 17.6381, 6.7321, 5.8992 looks on a white background.

Color Contrast Check

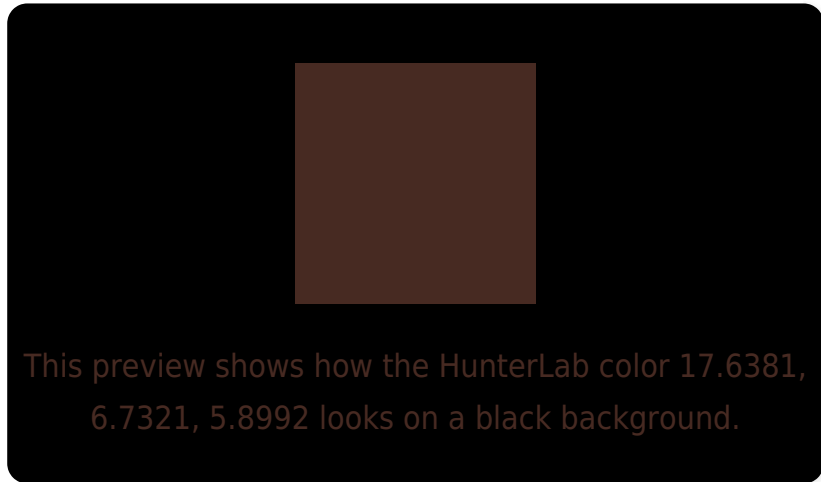
Large Text (above 18pt) WCAG AA ✓ Pass

Any Text WCAG AA ✓ Pass

Large Text (above 18pt) WCAG AAA ✓ Pass

Any Text WCAG AAA ✓ Pass

Black Background



Color Contrast Check

Large Text (above 18pt) WCAG AA × Fail

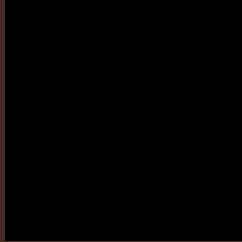
Any Text WCAG AA × Fail

Large Text (above 18pt) WCAG AAA × Fail

Any Text WCAG AAA × Fail

If you want to check with other color combinations, try the [Color Contrast Checker](#).

HunterLab 17.6381, 6.7321, 5.8992 Background



This preview shows how black text looks on a background with the HunterLab color 17.6381, 6.7321, 5.8992.



This preview shows how white text looks on a background with the HunterLab color 17.6381, 6.7321,

Color Blindness Simulation

Color vision deficiency is a very complex topic, and I could not describe the different causes any better than Wikipedia does, so if you want to learn more, you should check out their [article about color blindness](#).

Dichromacy



Original Color

17.6381, 6.7321, 5.8992

Protanopia

17.8092, -1.6712, 5.1177

Deuteranopia

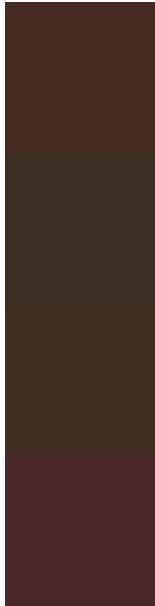
17.8448, 0.7304, 6.2281



Tritanopia

17.7354, 8.4168, 3.1098

Trichromacy



Original Color

17.6381, 6.7321, 5.8992

Protanomaly

17.6665, 1.4000, 5.3091

Deuteranomaly

17.7589, 2.7532, 6.1874

Tritanomaly

17.6544, 8.0153, 4.2771

Monochromacy



Original Color

17.6381, 6.7321, 5.8992

Achromatopsia

17.8595, -0.9529, 0.9703

Achromatomaly

17.6477, 1.6457, 2.8977

CSS Examples

Text

The CSS property to change the color of the text to HunterLab 17.6381, 6.7321, 5.8992 is called "color". The color property can be set on classes, ids or directly on the HTML element.

This example shows how text in the color `rgb(71, 42, 34)` looks like.

```
.text, #text, p{  
    color:rgb(71, 42, 34)  
}
```

If you want to add a text shadow in that color use the text-shadow property, you can generate a text shadow directly with our [CSS Text Shadow Generator](#).

Here you see how black text with a 4 pixel rgb(71, 42, 34) colored shadow looks like.

```
.shadow{ text-shadow: 4px 4px 2px rgb(71, 42, 34) }
```

Border

The CSS property to change the border of an element to HunterLab 17.6381, 6.7321, 5.8992 is called "border".

The border property can be set on classes, ids or directly on the HTML element.

This example shows the color as border, it can be applied via the CSS property "border" or "border-color".

```
.border, #border, table{ border:4px solid rgb(71, 42, 34) }
```


If only the border color should be changed use the property `border-color`.

```
.border{ border-color:rgb(71, 42, 34) }
```

If you want to add a box shadow in that color use:

Here you see how a box with a 4 pixel `rgb(71, 42, 34)` colored shadow looks like.

```
.boxshadow{ -moz-box-shadow:4px 4px 4px  
4px rgb(71, 42, 34); -webkit-box-  
shadow:4px 4px 4px 4px rgb(71, 42, 34);  
box-shadow:4px 4px 4px 4px rgb(71, 42, 34)  
}
```

Background

The CSS property to change the background color of an element to HunterLab 17.6381, 6.7321, 5.8992 is called "background". The background property can be set on classes, ids or directly on the HTML element.

```
.background, #background, body{  
background: rgb(71, 42, 34) }
```

If only the background color should be changed can be used:

```
.background{ background-color: rgb(71, 42,  
34) }
```

This example shows the color as background, it is applied via the CSS property "background".

To optimize and compress your CSS code, you can use our [online CSS compressor and optimizer](#) based on csstidy. If you want to create a linear or radial gradient as background or border, check our [CSS Gradient Generator](#).

Hey! You found this booklet interesting? Support Converting Colors with the new Membership Option!

The pro membership hides all ads, plus gives you double the colors in the color bucket, and more awesome pro features!

[Learn more, Memberships starting at \\$2.50/m!](#)

**Follow me
on Twitter!**

@ConvertingColor