

Converting Colors

HunterLab(17.6447, 8.2538,
3.7058)

Have a look what the booklet for
HunterLab(17.6447, 8.2538, 3.7058)
contains.

HunterLab(17.6940, 8.2115, 3.7067)	3
<i>Conversions</i>	4
<i>Details</i>	6
<i>Harmonies</i>	12
<i>Previews</i>	24
<i>Color Blindness Simulation</i>	28
<i>CSS Examples</i>	31

Color

**HunterLab(17.6940, 8.2115,
3.7067)**

Conversions

Conversions Part 1

Format	Color
Hex	48292A
RGB	72, 41, 42
RGB Percent	28%, 16%, 16%
CMY	0.7176, 0.8392, 0.8353
CMYK	0.00, 0.43, 0.42, 0.72
HSL	358°, 27%, 22%
HSV	358°, 43%, 28%
XYZ	3.8834, 3.1308, 2.5901
YIQ	50.3830, 18.1550, 6.8830

Conversions

Conversions Part 2

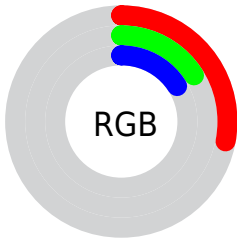
Format	Color
R_YB	72, 41, 42
Decimal	4729130
CIE Lab	20.56, 14.62, 5.52
CIE LCh	21, 15.628, 20.668
Yxy	3.1309, 0.4043, 0.3260
Android (android.graphics.Color)	4282919210 (0xFF48292A)
YUV	50.3830, -4.1328, 18.9581
Hunter-Lab	17.6940, 8.2115, 3.7067

Details

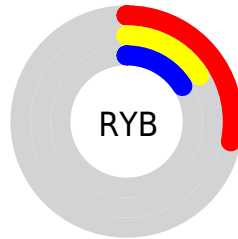
The HunterLab color **17.6940, 8.2115, 3.7067** is a dark color, and the websafe version is hex **663333**. A complement of this color would be **23.5821, -8.1962, -0.6008**, and the grayscale version is **17.9973, -0.9603, 0.9778**.

A 20% lighter version of the original color is **34.1205, 9.1065, 5.5161**, and **5.1109, 8.7525, 3.3025** is the 20% darker color. If you saturate the color by 10%, you get **16.2236, 10.5878, 4.3619**, and if you desaturate by 10%, it is **19.3124, 5.8681, 3.0929**.

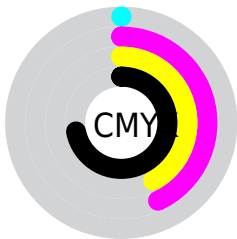
Distribution



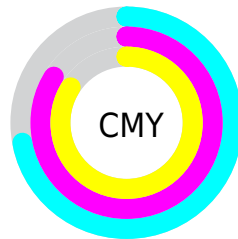
- Red (28%)
- Green (16%)
- Blue (16%)



- Red (28%)
- Yellow (16%)
- Blue (16%)



- Cyan (0%)
- Magenta (43%)
- Yellow (42%)
- Black (72%)



- Cyan (72%)
- Magenta (84%)
- Yellow (84%)

Brightness & Saturation Gradients

These gradients show how the HunterLab color 17.6940, 8.2115, 3.7067 changes by changing the brightness by 10 percent. The first figure shows a shift by +10% for each color and the second figure -10%.

Similar to the brightness gradients but the following saturation gradients show a change of the HunterLab color 17.6940, 8.2115, 3.7067 by changing the saturation by 10% instead.

■ 17.6940, 8.2115,
3.7067

■ 17.6940, 8.2115,
3.7067

■ 113.9625, 9.8810,
11.6425

■ 10.9566, 7.4857,
2.8677

■ 34.0476, 9.2109,
5.3760

■ 2.4917, 25.4382,
1.7442

■ 43.4651, 9.5379,
6.2205

0.0000, NaN, NaN

0.0000, NaN, NaN

■ 53.6195, 9.7722,
7.0791

0.0000, NaN, NaN

■ 64.4607, 9.9255,
7.9543

0.0000, NaN, NaN

■ 75.9477, 10.0065,
8.8475

0.0000, NaN, NaN

0.0000, NaN, NaN

■ 88.0459, 10.0225,

100.7261, 9.9791,
10.6913

17.6940, 8.2115,
3.7067

17.6940, 8.2115,
3.7067

16.2236, 10.5878,
4.3619

19.3124, 5.8681,
3.0929

14.9252, 12.9379,
5.0432

21.0556, 3.5918,
2.5248

13.8264, 15.1599,
5.7228

22.9056, 1.3935,
2.0022

12.9524, 17.1137,
6.3582

24.8474, -0.7262,
1.5220

12.2556, 18.8390,
6.8871

26.8689, -2.7725,
1.0795

■ 11.7593, 20.1813,
7.2637

■ 28.9602, -4.7532,
0.6703

■ 31.1133, -6.6765,
0.2898

■ 33.3216, -8.5507,
-0.0659

■ 35.5797, -10.3831,
-0.4003

Harmonies

Analogous

The Analogous color harmony consists of three colors that are next to each other on the color wheel.



17.6944, 8.7583, -0.4707



17.6940, 8.2115, 3.7067



17.6944, 5.0789, 6.3550

Triad

The Triadic color harmony groups three colors that are evenly spaced from another and form a triangle on the color wheel.



17.6944, 8.2106, 3.7070



17.6944, -7.3368, 5.5462



17.6944, -2.3702, -9.6385

Complementary

The Complementary color scheme is a pair of colors which are on the opposite of each other on the color wheel.



17.6940, 8.2115, 3.7067



23.5821, -8.1962, -0.6008

Split Complementary

Split-complementary colors differ from the complementary color scheme. The scheme consists of three colors, the original color and two neighbors of the complement color.



17.6944, -6.2575, -6.9490



17.6940, 8.2115, 3.7067



17.6944, -8.9237, 2.2862

Square

The Square scheme is like the rectangle color scheme, but the four colors are evenly spaced on the color wheel.



17.6944, 8.2106, 3.7070



17.6944, -3.9882, 7.2110



17.6944, -8.5501, -2.3055



17.6944, 2.3187, -8.9725

Rectangle

The Rectangle color scheme consists of four colors that form a rectangle on the color wheel.



17.6940, 8.2115, 3.7067



17.6944, 2.1097, 7.2508



17.6944, -8.5501, -2.3055



17.6944, -3.8057, -9.0754

Sweetspot

The Sweet Spot groups the original color and five complimentary colors.



17.6944, 8.2106, 3.7070



30.1033, 1.9724, 2.6728



18.4181, 11.9505, -8.1778



15.3759, 1.2108, 1.4249



65.8695, -3.5146, 3.5788



17.3419, -0.9253, 0.9422

Same Dimension

The Same Dimension uses a secret algorithm to generate beautiful new colors.



17.6944, 8.2106, 3.7070



21.2161, 14.2939, 5.8470



20.7723, 1.9852, 6.8462



12.3100, 0.2256, 0.9233



16.3862, 28.1047, 10.2564



40.4213, 69.2623, 25.8121

Inverse Universe

The Inverse Universe completely reimagines the original color for something new.



17.6944, 8.2106, 3.7070



21.2161, 14.2939, 5.8470



19.7958, -2.4162, -6.2068



12.3100, 0.2256, 0.9233



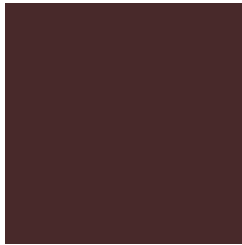
16.3862, 28.1047, 10.2564



40.4213, 69.2623, 25.8121

Previews

White Background



This preview shows how the HunterLab color 17.6940, 8.2115, 3.7067 looks on a white background.

Color Contrast Check

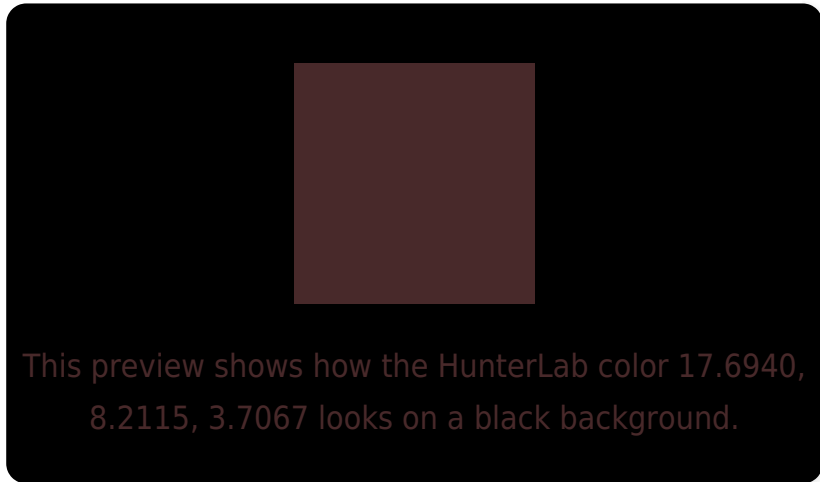
Large Text (above 18pt) WCAG AA ✓ Pass

Any Text WCAG AA ✓ Pass

Large Text (above 18pt) WCAG AAA ✓ Pass

Any Text WCAG AAA ✓ Pass

Black Background



Color Contrast Check

Large Text (above 18pt) WCAG AA × Fail

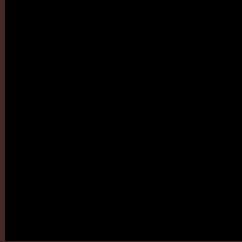
Any Text WCAG AA × Fail

Large Text (above 18pt) WCAG AAA × Fail

Any Text WCAG AAA × Fail

If you want to check with other color combinations, try the [Color Contrast Checker](#).

HunterLab 17.6940, 8.2115, 3.7067 Background



This preview shows how black text looks on a background with the HunterLab color 17.6940, 8.2115, 3.7067.

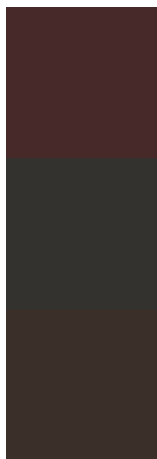


This preview shows how white text looks on a background with the HunterLab color 17.6940, 8.2115,

Color Blindness Simulation

Color vision deficiency is a very complex topic, and I could not describe the different causes any better than Wikipedia does, so if you want to learn more, you should check out their [article about color blindness](#).

Dichromacy



Original Color

17.6940, 8.2115, 3.7067

Protanopia

17.9124, -0.9536, 2.4652

Deuteranopia

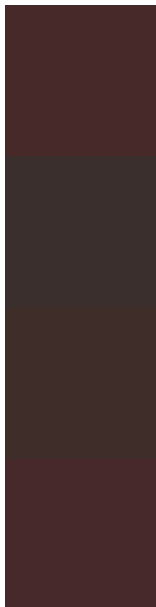
17.8144, 0.9098, 4.0111



Tritanopia

17.7354, 8.4168, 3.1098

Trichromacy



Original Color

17.6940, 8.2115, 3.7067

Protanomaly

17.7547, 2.0440, 2.6857

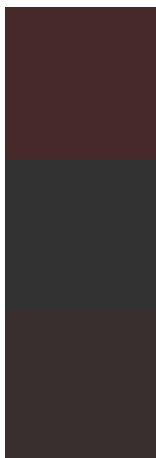
Deuteranomaly

17.5887, 3.6084, 3.8297

Tritanomaly

17.7144, 8.3130, 3.4115

Monochromacy



Original Color

17.6940, 8.2115, 3.7067

Achromatopsia

17.8595, -0.9529, 0.9703

Achromatomaly

17.7139, 1.9977, 1.9487

CSS Examples

Text

The CSS property to change the color of the text to HunterLab 17.6940, 8.2115, 3.7067 is called "color". The color property can be set on classes, ids or directly on the HTML element.

This example shows how text in the color `rgb(72, 41, 42)` looks like.

```
.text, #text, p{  
    color:rgb(72, 41, 42)  
}
```

If you want to add a text shadow in that color use the text-shadow property, you can generate a text shadow directly with our [CSS Text Shadow Generator](#).

Here you see how black text with a 4 pixel rgb(72, 41, 42) colored shadow looks like.

```
.shadow{ text-shadow: 4px 4px 2px rgb(72, 41, 42) }
```

Border

The CSS property to change the border of an element to HunterLab 17.6940, 8.2115, 3.7067 is called "border". The border property can be set on classes, ids or directly on the HTML element.

This example shows the color as border, it can be applied via the CSS property "border" or "border-color".

```
.border, #border, table{ border:4px solid rgb(72, 41, 42) }
```


If only the border color should be changed use the property `border-color`.

```
.border{ border-color:rgb(72, 41, 42) }
```

If you want to add a box shadow in that color use:

Here you see how a box with a 4 pixel `rgb(72, 41, 42)` colored shadow looks like.

```
.boxshadow{ -moz-box-shadow:4px 4px 4px  
4px rgb(72, 41, 42); -webkit-box-  
shadow:4px 4px 4px 4px rgb(72, 41, 42);  
box-shadow:4px 4px 4px 4px rgb(72, 41, 42)  
}
```

Background

The CSS property to change the background color of an element to HunterLab 17.6940, 8.2115, 3.7067 is called "background". The background property can be set on classes, ids or directly on the HTML element.

```
.background, #background, body{  
background: rgb(72, 41, 42) }
```

If only the background color should be changed can be used:

```
.background{ background-color: rgb(72, 41,  
42) }
```

This example shows the color as background, it is applied via the CSS property "background".

To optimize and compress your CSS code, you can use our [online CSS compressor and optimizer](#) based on csstidy. If you want to create a linear or radial gradient as background or border, check our [CSS Gradient Generator](#).

Hey! You found this booklet interesting? Support Converting Colors with the new Membership Option!

The pro membership hides all ads, plus gives you double the colors in the color bucket, and more awesome pro features!

[Learn more, Memberships starting at \\$2.50/m!](#)

**Follow me
on Twitter!**

@ConvertingColor