

Converting Colors

HunterLab(17.7041, 6.4182,
3.4514)

Have a look what the booklet for
HunterLab(17.7041, 6.4182, 3.4514)
contains.

HunterLab(17.7971, 6.5082, 3.4665)	3
<i>Conversions</i>	4
<i>Details</i>	6
<i>Harmonies</i>	12
<i>Previews</i>	24
<i>Color Blindness Simulation</i>	28
<i>CSS Examples</i>	31

Color

**HunterLab(17.7971, 6.5082,
3.4665)**

Conversions

Conversions Part 1

Format	Color
Hex	452B2B
RGB	69, 43, 43
RGB Percent	27%, 17%, 17%
CMY	0.7294, 0.8314, 0.8314
CMYK	0.00, 0.38, 0.38, 0.73
HSL	0°, 23%, 22%
HSV	0°, 38%, 27%
XYZ	3.7542, 3.1674, 2.6990
YIQ	50.7740, 15.4960, 5.5120

Conversions

Conversions Part 2

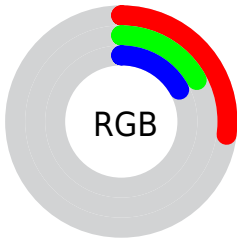
Format	Color
R_{YB}	69, 43, 43
Decimal	4533035
CIE Lab	20.70, 12.08, 4.97
CIE LCh	21, 13.060, 22.347
Yxy	3.1675, 0.3902, 0.3292
Android (android.graphics.Color)	4282723115 (0xFF452B2B)
YUV	50.7740, -3.8326, 15.9842
Hunter-Lab	17.7971, 6.5082, 3.4665

Details

The HunterLab color **17.7971, 6.5082, 3.4665** is a dark color, and the websafe version is hex **333333**. A complement of this color would be **22.8020, -7.0367, -0.7125**, and the grayscale version is **18.1280, -0.9673, 0.9849**.

A 20% lighter version of the original color is **34.2066, 6.9590, 5.1971**, and **4.8271, 8.2666, 3.1192** is the 20% darker color. If you saturate the color by 10%, you get **16.3130, 8.7452, 4.1097**, and if you desaturate by 10%, it is **19.4098, 4.3283, 2.8528**.

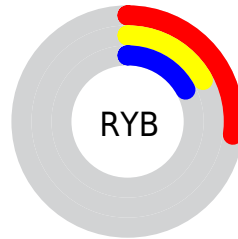
Distribution



Red (27%)

Green (17%)

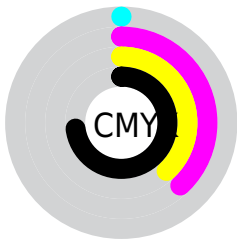
Blue (17%)



Red (27%)

Yellow (17%)

Blue (17%)

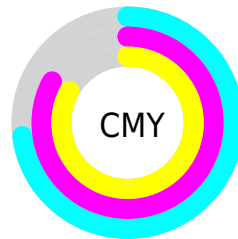


Cyan (0%)

Magenta (38%)

Yellow (38%)

Black (73%)



Cyan (73%)

Magenta (83%)

Yellow (83%)

Brightness & Saturation Gradients

These gradients show how the HunterLab color 17.7971, 6.5082, 3.4665 changes by changing the brightness by 10 percent. The first figure shows a shift by +10% for each color and the second figure -10%.

Similar to the brightness gradients but the following saturation gradients show a change of the HunterLab color 17.7971, 6.5082, 3.4665 by changing the saturation by 10% instead.

■ 17.7971, 6.5082,
3.4665

■ 17.7971, 6.5082,
3.4665

■ 114.1542, 7.0399,
11.1257

■ 11.0445, 5.9503,
2.6691

■ 34.1758, 7.2033,
5.0543

■ 2.7891, 18.7225,
1.9524

■ 43.6042, 7.3923,
5.8646

0.0000, NaN, NaN

■ 53.7686, 7.4965,
6.6918

0.0000, NaN, NaN

■ 64.6192, 7.5263,
7.5379

0.0000, NaN, NaN

■ 76.1151, 7.4898,
8.4040

0.0000, NaN, NaN

■ 88.2218, 7.3933,

0.0000, NaN, NaN

100.9100, 7.2420,
10.1977

17.7971, 6.5082,
3.4665

17.7971, 6.5082,
3.4665

16.3130, 8.7452,
4.1097

19.4098, 4.3283,
2.8528

14.9787, 11.0020,
4.7698

21.1311, 2.2251,
2.2720

13.8195, 13.2056,
5.4246

22.9457, 0.2012,
1.7246

12.8609, 15.2443,
6.0386

24.8411, -1.7471,
1.2083

12.1180, 16.9908,
6.5702

26.8068, -3.6267,
0.7201

■ 11.4173, 18.7991,
7.1258

■ 28.8347, -5.4461,
0.2565

■ 11.2486, 19.2613,
7.2685

■ 30.9177, -7.2134,
-0.1855

■ 33.0505, -8.9362,
-0.6092

■ 35.2282, -10.6213,
-1.0169

Harmonies

Analogous

The Analogous color harmony consists of three colors that are next to each other on the color wheel.



17.7975, 7.0838, -0.0049



17.7971, 6.5082, 3.4665



17.7975, 3.8518, 5.7307

Triad

The Triadic color harmony groups three colors that are evenly spaced from another and form a triangle on the color wheel.



17.7975, 6.5074, 3.4668



17.7975, -6.4926, 4.7895



17.7975, -1.9355, -7.6220

Complementary

The Complementary color scheme is a pair of colors which are on the opposite of each other on the color wheel.



17.7971, 6.5082, 3.4665



22.8020, -7.0367, -0.7125

Split Complementary

Split-complementary colors differ from the complementary color scheme. The scheme consists of three colors, the original color and two neighbors of the complement color.



17.7975, -5.2923, -5.6337



17.7971, 6.5082, 3.4665



17.7975, -7.7722, 1.8903

Square

The Square scheme is like the rectangle color scheme, but the four colors are evenly spaced on the color wheel.



17.7975, 6.5074, 3.4668



17.7975, -3.7055, 6.3722



17.7975, -7.3524, -1.9538



17.7975, 1.9829, -6.9465

Rectangle

The Rectangle color scheme consists of four colors that form a rectangle on the color wheel.



17.7971, 6.5082, 3.4665



17.7975, 1.3744, 6.5017



17.7975, -7.3524, -1.9538



17.7975, -3.1620, -7.2304

Sweetspot

The Sweet Spot groups the original color and five complimentary colors.



17.7975, 6.5074, 3.4668



28.9167, 1.2376, 2.5033



18.5004, 10.0032, -6.4688



14.9812, 0.7181, 1.3227



64.8100, -3.4581, 3.5212



16.4960, -0.8802, 0.8963

Same Dimension

The Same Dimension uses a secret algorithm to generate beautiful new colors.



17.7975, 6.5074, 3.4668



21.3610, 11.1034, 5.2648



20.6591, 1.0383, 6.1890



12.3075, 0.2117, 0.9598



16.3652, 28.0237, 10.5748



40.4019, 69.1873, 26.1067

Inverse Universe

The Inverse Universe completely reimagines the original color for something new.



22.8020, -7.0367, -0.7125



29.2688, -10.4964, -1.4055



19.4207, -1.9581, -5.2561



12.9552, -1.5162, 0.4273



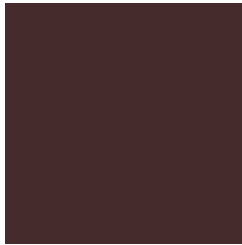
31.4919, -16.6941, -3.3242



77.7468, -41.2141, -8.2074

Previews

White Background



This preview shows how the HunterLab color 17.7971, 6.5082, 3.4665 looks on a white background.

Color Contrast Check

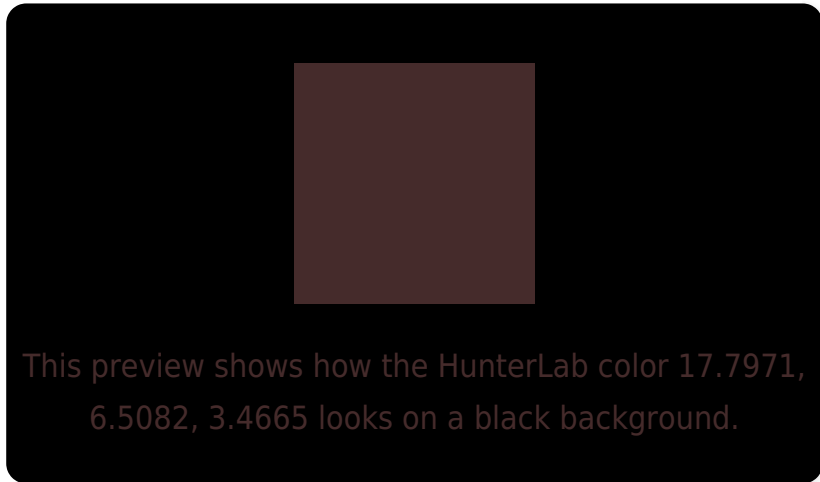
Large Text (above 18pt) WCAG AA ✓ Pass

Any Text WCAG AA ✓ Pass

Large Text (above 18pt) WCAG AAA ✓ Pass

Any Text WCAG AAA ✓ Pass

Black Background



Color Contrast Check

Large Text (above 18pt) WCAG AA × Fail

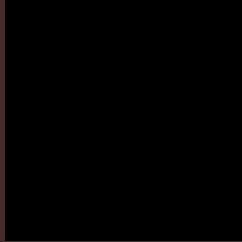
Any Text WCAG AA × Fail

Large Text (above 18pt) WCAG AAA × Fail

Any Text WCAG AAA × Fail

If you want to check with other color combinations, try the [Color Contrast Checker](#).

HunterLab 17.7971, 6.5082, 3.4665 Background



This preview shows how black text looks on a background with the HunterLab color 17.7971, 6.5082, 3.4665.



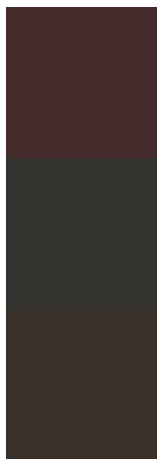
This preview shows how white text looks on a background with the HunterLab color 17.7971, 6.5082,

3.4665.

Color Blindness Simulation

Color vision deficiency is a very complex topic, and I could not describe the different causes any better than Wikipedia does, so if you want to learn more, you should check out their [article about color blindness](#).

Dichromacy



Original Color

17.7971, 6.5082, 3.4665

Protanopia

17.9346, -0.8318, 2.1460

Deuteranopia

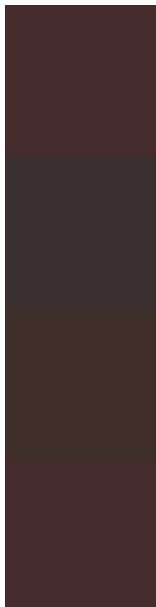
17.8343, 1.0164, 3.7249



Tritanopia

17.8612, 6.8317, 2.5455

Trichromacy



Original Color

17.7971, 6.5082, 3.4665

Protanomaly

17.6913, 1.8779, 2.2717

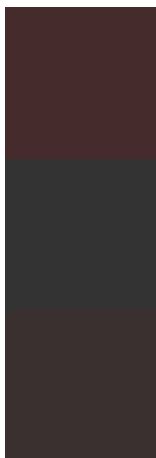
Deuteranomaly

17.7350, 2.9983, 3.6576

Tritanomaly

17.8394, 6.7215, 2.8591

Monochromacy



Original Color

17.7971, 6.5082, 3.4665

Achromatopsia

18.1947, -0.9708, 0.9886

Achromatomaly

17.9634, 1.7072, 1.8694

CSS Examples

Text

The CSS property to change the color of the text to HunterLab 17.7971, 6.5082, 3.4665 is called "color". The color property can be set on classes, ids or directly on the HTML element.

This example shows how text in the color `rgb(69, 43, 43)` looks like.

```
.text, #text, p{  
    color:rgb(69, 43, 43)  
}
```

If you want to add a text shadow in that color use the text-shadow property, you can generate a text shadow directly with our [CSS Text Shadow Generator](#).

Here you see how black text with a 4 pixel rgb(69, 43, 43) colored shadow looks like.

```
.shadow{ text-shadow: 4px 4px 2px rgb(69, 43, 43) }
```

Border

The CSS property to change the border of an element to HunterLab 17.7971, 6.5082, 3.4665 is called "border".

The border property can be set on classes, ids or directly on the HTML element.

This example shows the color as border, it can be applied via the CSS property "border" or "border-color".

```
.border, #border, table{ border:4px solid rgb(69, 43, 43) }
```


If only the border color should be changed use the property `border-color`.

```
.border{ border-color:rgb(69, 43, 43) }
```

If you want to add a box shadow in that color use:

Here you see how a box with a 4 pixel `rgb(69, 43, 43)` colored shadow looks like.

```
.boxshadow{ -moz-box-shadow:4px 4px 4px  
4px rgb(69, 43, 43); -webkit-box-  
shadow:4px 4px 4px 4px rgb(69, 43, 43);  
box-shadow:4px 4px 4px 4px rgb(69, 43, 43)  
}
```

Background

The CSS property to change the background color of an element to HunterLab 17.7971, 6.5082, 3.4665 is called "background". The background property can be set on classes, ids or directly on the HTML element.

```
.background, #background, body{  
background: rgb(69, 43, 43) }
```

If only the background color should be changed can be used:

```
.background{ background-color: rgb(69, 43,  
43) }
```

This example shows the color as background, it is applied via the CSS property "background".

To optimize and compress your CSS code, you can use our [online CSS compressor and optimizer](#) based on csstidy. If you want to create a linear or radial gradient as background or border, check our [CSS Gradient Generator](#).

Hey! You found this booklet interesting? Support Converting Colors with the new Membership Option!

The pro membership hides all ads, plus gives you double the colors in the color bucket, and more awesome pro features!

[Learn more, Memberships starting at \\$2.50/m!](#)

**Follow me
on Twitter!**

@ConvertingColor