

# Converting Colors

HunterLab(17.7685, 7.1140,  
6.0876)

Have a look what the booklet for  
HunterLab(17.7685, 7.1140, 6.0876)  
contains.

<b>HunterLab(17.7458, 7.0591, 6.0022)</b> .....	3
<i><b>Conversions</b></i> .....	4
<i><b>Details</b></i> .....	6
<i><b>Harmonies</b></i> .....	12
<i><b>Previews</b></i> .....	24
<i><b>Color Blindness Simulation</b></i> .....	28
<i><b>CSS Examples</b></i> .....	31

# Color

**HunterLab(17.7458, 7.0591,  
6.0022)**

# Conversions

## Conversions Part 1

Format	Color
Hex	482A22
RGB	72, 42, 34
RGB Percent	28%, 16%, 13%
CMY	0.7176, 0.8353, 0.8667
CMYK	0.00, 0.42, 0.53, 0.72
HSL	13°, 36%, 21%
HSV	13°, 53%, 28%
XYZ	3.7892, 3.1491, 1.9215
YIQ	50.0580, 20.4480, 3.8720

# Conversions

## Conversions Part 2

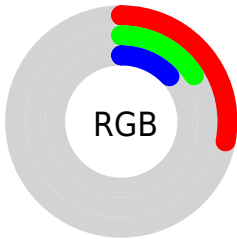
<b>Format</b>	<b>Color</b>
<b>R<sub>YB</sub></b>	72, 44, 34
Decimal	4729378
CIE <sub>Lab</sub>	20.63, 12.91, 11.09
CIE <sub>LCh</sub>	21, 17.019, 40.656
Yxy	3.1493, 0.4277, 0.3554
Android (android.graphics.Color)	4282919458 (0xFF482A22)
YUV	50.0580, -7.9166, 19.2431
Hunter-Lab	17.7458, 7.0591, 6.0022

# Details

The HunterLab color **17.7458, 7.0591, 6.0022** is a dark color, and the websafe version is hex **663333**. A complement of this color would be **21.1531, -6.1105, -4.2568**, and the grayscale version is **17.9001, -0.9551, 0.9725**.

A 20% lighter version of the original color is **34.1571, 7.5910, 8.6692**, and **4.9687, 8.5090, 3.2106** is the 20% darker color. If you saturate the color by 10%, you get **16.5440, 8.9033, 6.6774**, and if you desaturate by 10%, it is **19.0461, 5.2856, 5.2409**.

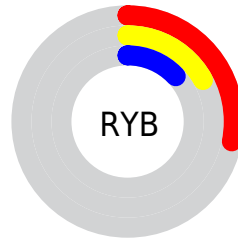
# Distribution



Red (28%)

Green (16%)

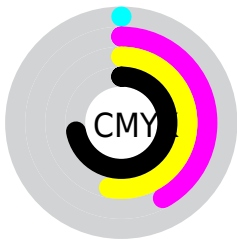
Blue (13%)



Red (28%)

Yellow (17%)

Blue (13%)

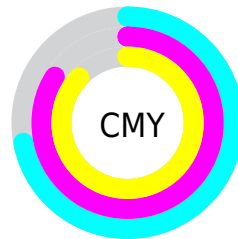


Cyan (0%)

Magenta (42%)

Yellow (53%)

Black (72%)



Cyan (72%)

Magenta (84%)

Yellow (87%)

# Brightness & Saturation Gradients

These gradients show how the HunterLab color 17.7458, 7.0591, 6.0022 changes by changing the brightness by 10 percent. The first figure shows a shift by +10% for each color and the second figure -10%.

Similar to the brightness gradients but the following saturation gradients show a change of the HunterLab color 17.7458, 7.0591, 6.0022 by changing the saturation by 10% instead.



■ 17.7458, 7.0591,  
6.0022

■ 17.7458, 7.0591,  
6.0022

■ 114.0588, 7.9672,  
16.8668

■ 11.0007, 6.4446,  
4.9712

■ 34.1120, 7.8554,  
8.5393

■ 2.6454, 21.1255,  
1.8518

■ 43.5350, 8.0901,  
9.7473

0.0000, NaN, NaN

0.0000, NaN, NaN

■ 53.6945, 8.2373,  
10.9378

0.0000, NaN, NaN

■ 64.5404, 8.3079,  
12.1203

0.0000, NaN, NaN

■ 76.0318, 8.3102,  
13.3007

0.0000, NaN, NaN

0.0000, NaN, NaN

■ 88.1343, 8.2508,

14.4834

0.0000, NaN, NaN

100.8185, 8.1350,  
15.6714

17.7458, 7.0591,  
6.0022

17.7458, 7.0591,  
6.0022

16.5440, 8.9033,  
6.6774

19.0461, 5.2856,  
5.2409

15.4525, 10.7975,  
7.2424

20.4316, 3.5965,  
4.4120

14.4859, 12.6998,  
7.6717

21.8924, 1.9932,  
3.5306

13.6526, 14.5256,  
8.0184

23.4198, 0.4727,  
2.6082

13.1299, 15.7083,  
8.3656

25.0063, -0.9703,  
1.6532

■ 26.6454, -2.3429,  
0.6719

■ 28.3318, -3.6521,  
-0.3311

■ 30.0610, -4.9050,  
-1.3523

■ 31.8292, -6.1080,  
-2.3894

# Harmonies

## Analogous

The Analogous color harmony consists of three colors that are next to each other on the color wheel.



17.7462, 9.6690, 2.5946



17.7458, 7.0591, 6.0022



17.7462, 2.3934, 7.6709

# Triad

The Triadic color harmony groups three colors that are evenly spaced from another and form a triangle on the color wheel.



17.7462, 7.0582, 6.0025



17.7462, -9.2312, 3.7679



17.7462, 0.8885, -10.7583

# Complementary

The Complementary color scheme is a pair of colors which are on the opposite of each other on the color wheel.



17.7458, 7.0591, 6.0022



21.1531, -6.1105, -4.2568

# Split Complementary

Split-complementary colors differ from the complementary color scheme. The scheme consists of three colors, the original color and two neighbors of the complement color.



17.7462, -4.0588, -10.1823



17.7458, 7.0591, 6.0022



17.7462, -9.5378, -0.8333

# Square

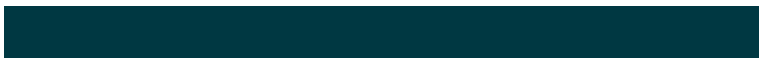
The Square scheme is like the rectangle color scheme, but the four colors are evenly spaced on the color wheel.



17.7462, 7.0582, 6.0025



17.7462, -6.8557, 6.6534



17.7462, -7.7460, -6.1891



17.7462, 5.8509, -7.5939



# Rectangle

The Rectangle color scheme consists of four colors that form a rectangle on the color wheel.



17.7458, 7.0591, 6.0022



17.7462, -1.0592, 7.9554



17.7462, -7.7460, -6.1891



17.7462, -0.8362, -11.0138

# Sweetspot

The Sweet Spot groups the original color and five complimentary colors.



17.7462, 7.0582, 6.0025



30.1107, 1.3866, 3.9172



17.0192, 14.0712, -6.3729



15.4468, 0.8152, 2.0833



65.8695, -3.5146, 3.5788



17.3419, -0.9253, 0.9422



# Same Dimension

The Same Dimension uses a secret algorithm to generate beautiful new colors.



17.7462, 7.0582, 6.0025



21.4157, 12.4303, 9.0311



21.8818, -0.6981, 9.3706



12.4734, -0.0737, 1.1452



17.9228, 23.0332, 11.4472



42.9181, 60.9422, 27.5128



# Inverse Universe

The Inverse Universe completely reimagines the original color for something new.



21.1531, -6.1105, -4.2568



26.7949, -8.7132, -7.2565



16.4785, 1.3101, -11.8820



12.7817, -1.2374, 0.2232



25.3589, -8.9416, -12.3941

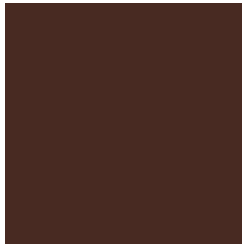


61.5202, -20.5860, -32.4556



# Previews

## White Background



This preview shows how the HunterLab color 17.7458, 7.0591, 6.0022 looks on a white background.

## Color Contrast Check

Large Text (above 18pt) WCAG AA ✓ Pass

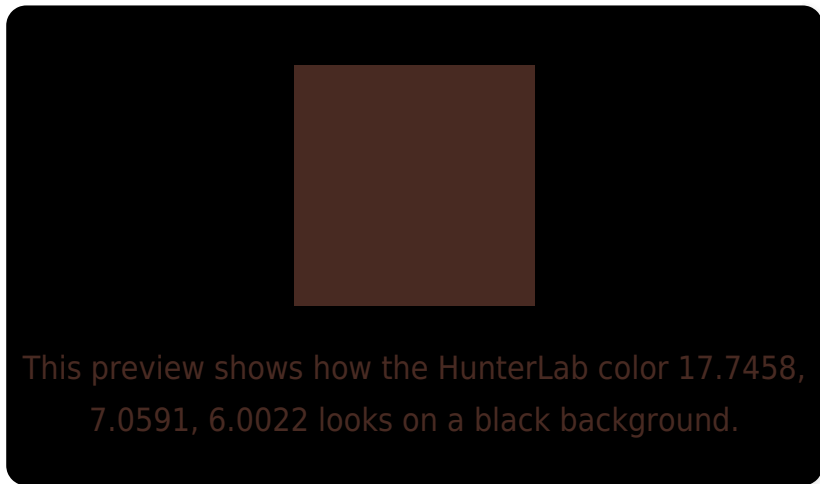
Any Text WCAG AA ✓ Pass

Large Text (above 18pt) WCAG AAA ✓ Pass

Any Text WCAG AAA ✓ Pass



# Black Background



## Color Contrast Check

Large Text (above 18pt) WCAG AA × Fail

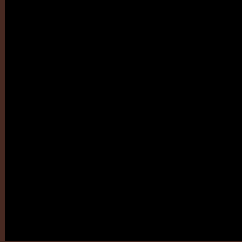
Any Text WCAG AA × Fail

Large Text (above 18pt) WCAG AAA × Fail

Any Text WCAG AAA × Fail

If you want to check with other color combinations, try the [Color Contrast Checker](#).

## HunterLab 17.7458, 7.0591, 6.0022 Background



This preview shows how black text looks on a background with the HunterLab color 17.7458, 7.0591, 6.0022.



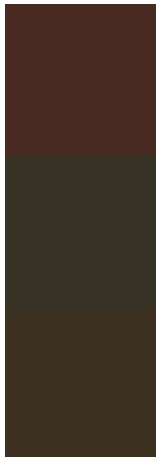
This preview shows how white text looks on a background with the HunterLab color 17.7458, 7.0591,



# Color Blindness Simulation

Color vision deficiency is a very complex topic, and I could not describe the different causes any better than Wikipedia does, so if you want to learn more, you should check out their [article about color blindness](#).

## Dichromacy



### Original Color

17.7458, 7.0591, 6.0022

### Protanopia

17.8859, -1.4019, 5.1947

### Deuteranopia

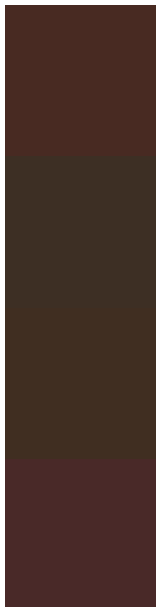
17.8448, 0.7304, 6.2281



## Tritanopia

17.8443, 8.7374, 3.2311

# Trichromacy



## Original Color

17.7458, 7.0591, 6.0022

## Protanomaly

17.7553, 1.6963, 5.3969

## Deuteranomaly

17.7589, 2.7532, 6.1874

## Tritanomaly

17.7639, 8.3395, 4.3917

# Monochromacy



## Original Color

17.7458, 7.0591, 6.0022

## Achromatopsia

17.8595, -0.9529, 0.9703

## Achromatomaly

17.6477, 1.6457, 2.8977

# CSS Examples

## Text

The CSS property to change the color of the text to HunterLab 17.7458, 7.0591, 6.0022 is called "color". The color property can be set on classes, ids or directly on the HTML element.

This example shows how text in the color `rgb(72, 42, 34)` looks like.

```
.text, #text, p{  
    color:rgb(72, 42, 34)  
}
```

If you want to add a text shadow in that color use the text-shadow property, you can generate a text shadow directly with our [CSS Text Shadow Generator](#).

Here you see how black text with a 4 pixel rgb(72, 42, 34) colored shadow looks like.

```
.shadow{ text-shadow: 4px 4px 2px rgb(72, 42, 34) }
```

## Border

The CSS property to change the border of an element to HunterLab 17.7458, 7.0591, 6.0022 is called "border".

The border property can be set on classes, ids or directly on the HTML element.

This example shows the color as border, it can be applied via the CSS property "border" or "border-color".

```
.border, #border, table{ border:4px solid rgb(72, 42, 34) }
```



If only the border color should be changed use the property `border-color`.

```
.border{ border-color:rgb(72, 42, 34) }
```

If you want to add a box shadow in that color use:

Here you see how a box with a 4 pixel `rgb(72, 42, 34)` colored shadow looks like.

```
.boxshadow{ -moz-box-shadow:4px 4px 4px  
4px rgb(72, 42, 34); -webkit-box-  
shadow:4px 4px 4px 4px rgb(72, 42, 34);  
box-shadow:4px 4px 4px 4px rgb(72, 42, 34)  
}
```

# Background

The CSS property to change the background color of an element to HunterLab 17.7458, 7.0591, 6.0022 is called "background". The background property can be set on classes, ids or directly on the HTML element.

```
.background, #background, body{  
background: rgb(72, 42, 34) }
```

If only the background color should be changed can be used:

```
.background{ background-color: rgb(72, 42,  
34) }
```

This example shows the color as background, it is applied via the CSS property "background".

To optimize and compress your CSS code, you can use our [online CSS compressor and optimizer](#) based on csstidy. If you want to create a linear or radial gradient as background or border, check our [CSS Gradient Generator](#).

Hey! You found this booklet interesting? Support Converting Colors with the new Membership Option!

The pro membership hides all ads, plus gives you double the colors in the color bucket, and more awesome pro features!

**[Learn more, Memberships starting at \\$2.50/m!](#)**

**Follow me  
on Twitter!**

@ConvertingColor