

Converting Colors

HunterLab(17.7998, 5.3521,
2.0686)

Have a look what the booklet for
HunterLab(17.7998, 5.3521, 2.0686)
contains.

HunterLab(17.7900, 5.5962, 2.0972)	3
<i>Conversions</i>	4
<i>Details</i>	6
<i>Harmonies</i>	12
<i>Previews</i>	24
<i>Color Blindness Simulation</i>	28
<i>CSS Examples</i>	31

Color

**HunterLab(17.7900, 5.5962,
2.0972)**

Conversions

Conversions Part 1

Format	Color
Hex	422C2F
RGB	66, 44, 47
RGB Percent	26%, 17%, 18%
CMY	0.7412, 0.8274, 0.8157
CMYK	0.00, 0.33, 0.29, 0.74
HSL	352°, 20%, 22%
HSV	352°, 33%, 26%
XYZ	3.6605, 3.1648, 3.1073
YIQ	50.9200, 12.1490, 5.5970

Conversions

Conversions Part 2

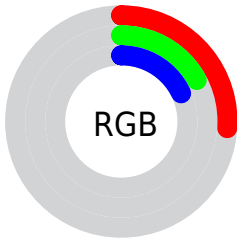
Format	Color
RYB	66, 44, 47
Decimal	4336687
CIELab	20.69, 10.69, 2.15
CIElCh	21, 10.907, 11.343
Yxy	3.1650, 0.3685, 0.3186
Android (android.graphics.Color)	4282526767 (0xFF422C2F)
YUV	50.9200, -1.9326, 13.2252
Hunter-Lab	17.7900, 5.5962, 2.0972

Details

The HunterLab color **17.7900, 5.5962, 2.0972** is a dark color, and the websafe version is hex **333333**. A complement of this color would be **21.8880, -6.6273, 0.6322**, and the grayscale version is **18.1716, -0.9696, 0.9873**.

A 20% lighter version of the original color is **34.2746, 6.1716, 3.3137**, and **4.5461, 7.7854, 2.9376** is the 20% darker color. If you saturate the color by 10%, you get **16.3362, 7.7579, 2.4884**, and if you desaturate by 10%, it is **19.3534, 3.4762, 1.7781**.

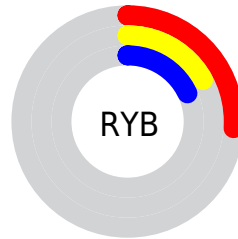
Distribution



Red (26%)

Green (17%)

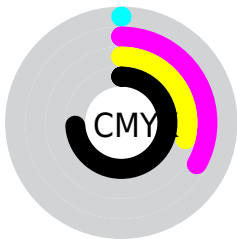
Blue (18%)



Red (26%)

Yellow (17%)

Blue (18%)

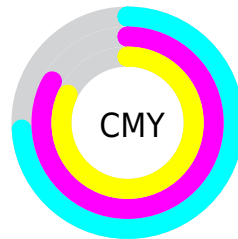


Cyan (0%)

Magenta (33%)

Yellow (29%)

Black (74%)



Cyan (74%)

Magenta (83%)

Yellow (82%)

Brightness & Saturation Gradients

These gradients show how the HunterLab color 17.7900, 5.5962, 2.0972 changes by changing the brightness by 10 percent. The first figure shows a shift by +10% for each color and the second figure -10%.

Similar to the brightness gradients but the following saturation gradients show a change of the HunterLab color 17.7900, 5.5962, 2.0972 by changing the saturation by 10% instead.

■ 17.7900, 5.5962,
2.0972

■ 17.7900, 5.5962,
2.0972

■ 114.1409, 5.5043,
8.3627

■ 11.0384, 5.1327,
1.5516

■ 34.1669, 6.1232,
3.2804

■ 2.7696, 16.6767,
1.9387

■ 43.5946, 6.2365,
3.9189

0.0000, NaN, NaN

0.0000, NaN, NaN

■ 53.7583, 6.2694,
4.5880

0.0000, NaN, NaN

■ 64.6083, 6.2318,
5.2870

0.0000, NaN, NaN

■ 76.1036, 6.1311,
6.0148

0.0000, NaN, NaN

0.0000, NaN, NaN

■ 88.2097, 5.9732,

100.8973, 5.7630,
7.5535

17.7900, 5.5962,
2.0972

17.7900, 5.5962,
2.0972

16.3362, 7.7579,
2.4884

19.3534, 3.4762,
1.7781

15.0095, 9.9335,
2.9555

21.0097, 1.4131,
1.5227

13.8315, 12.0672,
3.4978

22.7465, -0.5908,
1.3234

12.8251, 14.0714,
4.1039

24.5534, -2.5380,
1.1725

12.0123, 15.8271,
4.7478

26.4219, -4.4335,
1.0632

■ 11.3241, 17.4761,
5.3257

■ 28.3450, -6.2833,
0.9894

■ 10.8534, 18.7684,
5.6052

■ 30.3170, -8.0938,
0.9462

■ 32.3332, -9.8706,
0.9294

■ 34.3896, -11.6191,
0.9354

Harmonies

Analogous

The Analogous color harmony consists of three colors that are next to each other on the color wheel.



17.7904, 5.3610, -1.0386



17.7900, 5.5962, 2.0972



17.7904, 3.9848, 4.4623

Triad

The Triadic color harmony groups three colors that are evenly spaced from another and form a triangle on the color wheel.



17.7904, 5.5955, 2.0975



17.7904, -4.8900, 4.8757



17.7904, -2.9040, -5.6289

Complementary

The Complementary color scheme is a pair of colors which are on the opposite of each other on the color wheel.



17.7900, 5.5962, 2.0972



21.8880, -6.6273, 0.6322

Split Complementary

Split-complementary colors differ from the complementary color scheme. The scheme consists of three colors, the original color and two neighbors of the complement color.



17.7904, -5.3997, -3.4193



17.7900, 5.5962, 2.0972



17.7904, -6.4883, 2.7658

Square

The Square scheme is like the rectangle color scheme, but the four colors are evenly spaced on the color wheel.



17.7904, 5.5955, 2.0975



17.7904, -2.1618, 5.8634



17.7904, -6.6680, -0.2400



17.7904, 0.2947, -5.8956

Rectangle

The Rectangle color scheme consists of four colors that form a rectangle on the color wheel.



17.7900, 5.5962, 2.0972



17.7904, 2.1445, 5.4320



17.7904, -6.6680, -0.2400



17.7904, -3.8468, -5.0724

Sweetspot

The Sweet Spot groups the original color and five complimentary colors.



17.7904, 5.5955, 2.0975



28.3416, 1.0901, 1.9237



18.0049, 7.3038, -5.7505



14.3612, 0.6302, 0.9870



63.7533, -3.4017, 3.4638



15.6573, -0.8354, 0.8507

Same Dimension

The Same Dimension uses a secret algorithm to generate beautiful new colors.



17.7904, 5.5955, 2.0975



21.8231, 9.7706, 3.1914



19.4152, 2.0275, 4.7217



11.5812, 0.2343, 0.7533



16.0172, 27.6147, 8.9175



40.0101, 68.7603, 23.9788

Inverse Universe

The Inverse Universe completely reimagines the original color for something new.



17.7904, 5.5955, 2.0975



21.8231, 9.7706, 3.1914



19.9634, -3.1905, -3.0623



11.5812, 0.2343, 0.7533



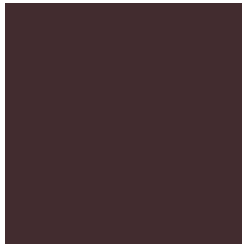
16.0172, 27.6147, 8.9175



40.0101, 68.7603, 23.9788

Previews

White Background



This preview shows how the HunterLab color 17.7900, 5.5962, 2.0972 looks on a white background.

Color Contrast Check

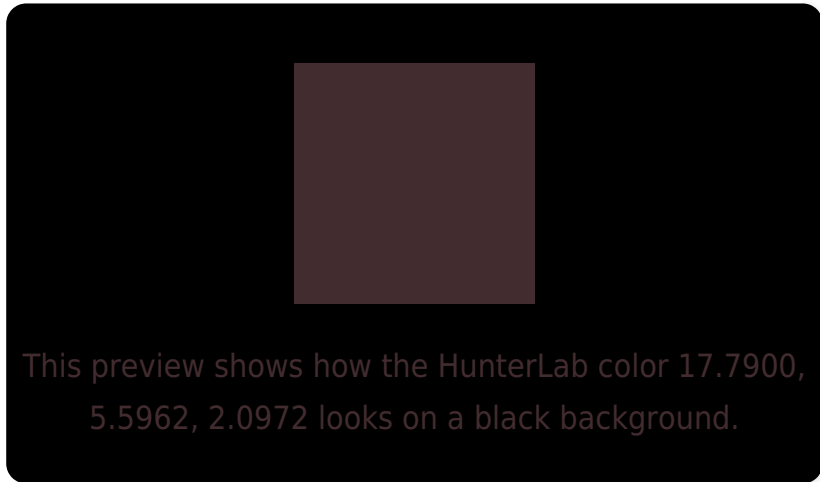
Large Text (above 18pt) WCAG AA ✓ Pass

Any Text WCAG AA ✓ Pass

Large Text (above 18pt) WCAG AAA ✓ Pass

Any Text WCAG AAA ✓ Pass

Black Background



Color Contrast Check

Large Text (above 18pt) WCAG AA × Fail

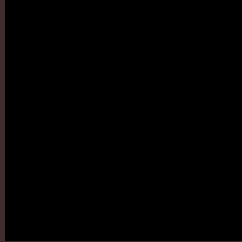
Any Text WCAG AA × Fail

Large Text (above 18pt) WCAG AAA × Fail

Any Text WCAG AAA × Fail

If you want to check with other color combinations, try the [Color Contrast Checker](#).

HunterLab 17.7900, 5.5962, 2.0972 Background



This preview shows how black text looks on a background with the HunterLab color 17.7900, 5.5962, 2.0972.

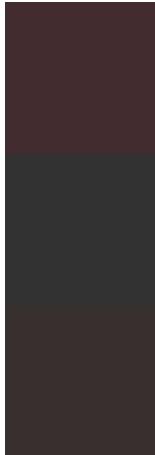


This preview shows how white text looks on a background with the HunterLab color 17.7900, 5.5962,

Color Blindness Simulation

Color vision deficiency is a very complex topic, and I could not describe the different causes any better than Wikipedia does, so if you want to learn more, you should check out their [article about color blindness](#).

Dichromacy



Original Color

17.7900, 5.5962, 2.0972

Protanopia

17.9313, -0.7037, 1.0591

Deuteranopia

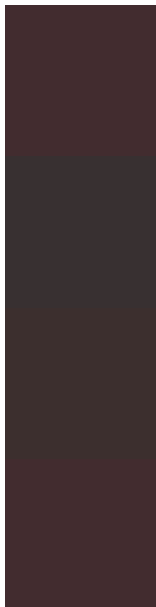
17.7536, 0.9136, 2.3236



Tritanopia

17.7900, 5.5962, 2.0972

Trichromacy



Original Color

17.7900, 5.5962, 2.0972

Protanomaly

17.8225, 1.2829, 1.3381

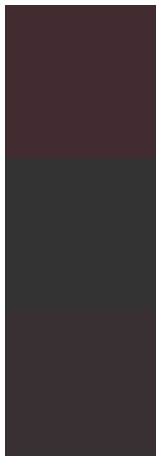
Deuteranomaly

17.8632, 2.4458, 2.4709

Tritanomaly

17.7900, 5.5962, 2.0972

Monochromacy



Original Color

17.7900, 5.5962, 2.0972

Achromatopsia

18.1947, -0.9708, 0.9886

Achromatomaly

17.8464, 1.4109, 0.9964

CSS Examples

Text

The CSS property to change the color of the text to HunterLab 17.7900, 5.5962, 2.0972 is called "color". The color property can be set on classes, ids or directly on the HTML element.

This example shows how text in the color `rgb(66, 44, 47)` looks like.

```
.text, #text, p{  
    color:rgb(66, 44, 47)  
}
```

If you want to add a text shadow in that color use the text-shadow property, you can generate a text shadow directly with our [CSS Text Shadow Generator](#).

Here you see how black text with a 4 pixel rgb(66, 44, 47) colored shadow looks like.

```
.shadow{ text-shadow: 4px 4px 2px rgb(66, 44, 47) }
```

Border

The CSS property to change the border of an element to HunterLab 17.7900, 5.5962, 2.0972 is called "border".

The border property can be set on classes, ids or directly on the HTML element.

This example shows the color as border, it can be applied via the CSS property "border" or "border-color".

```
.border, #border, table{ border:4px solid rgb(66, 44, 47) }
```


If only the border color should be changed use the property `border-color`.

```
.border{ border-color:rgb(66, 44, 47) }
```

If you want to add a box shadow in that color use:

Here you see how a box with a 4 pixel `rgb(66, 44, 47)` colored shadow looks like.

```
.boxshadow{ -moz-box-shadow:4px 4px 4px  
4px rgb(66, 44, 47); -webkit-box-  
shadow:4px 4px 4px 4px rgb(66, 44, 47);  
box-shadow:4px 4px 4px 4px rgb(66, 44, 47)  
}
```

Background

The CSS property to change the background color of an element to HunterLab 17.7900, 5.5962, 2.0972 is called "background". The background property can be set on classes, ids or directly on the HTML element.

```
.background, #background, body{  
background: rgb(66, 44, 47) }
```

If only the background color should be changed can be used:

```
.background{ background-color: rgb(66, 44,  
47) }
```

This example shows the color as background, it is applied via the CSS property "background".

To optimize and compress your CSS code, you can use our [online CSS compressor and optimizer](#) based on csstidy. If you want to create a linear or radial gradient as background or border, check our [CSS Gradient Generator](#).

Hey! You found this booklet interesting? Support Converting Colors with the new Membership Option!

The pro membership hides all ads, plus gives you double the colors in the color bucket, and more awesome pro features!

[Learn more, Memberships starting at \\$2.50/m!](#)

**Follow me
on Twitter!**

@ConvertingColor