

Converting Colors

HunterLab(17.8126, 9.8812,
4.1604)

Have a look what the booklet for
HunterLab(17.8126, 9.8812, 4.1604)
contains.

HunterLab(17.9281, 9.8406, 4.2818)	3
<i>Conversions</i>	4
<i>Details</i>	6
<i>Harmonies</i>	12
<i>Previews</i>	24
<i>Color Blindness Simulation</i>	28
<i>CSS Examples</i>	31

Color

**HunterLab(17.9281, 9.8406,
4.2818)**

Conversions

Conversions Part 1

Format	Color
Hex	4C2829
RGB	76, 40, 41
RGB Percent	30%, 16%, 16%
CMY	0.7020, 0.8431, 0.8392
CMYK	0.00, 0.47, 0.46, 0.70
HSL	358°, 31%, 23%
HSV	358°, 47%, 30%
XYZ	4.1395, 3.2142, 2.5000
YIQ	50.8780, 21.1350, 7.9430

Conversions

Conversions Part 2

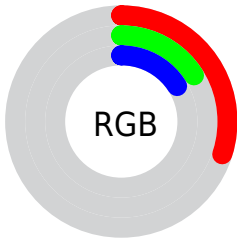
Format	Color
R_{YB}	76, 40, 41
Decimal	4991017
CIE _{Lab}	20.88, 16.94, 6.75
CIE _{LCh}	21, 18.235, 21.710
Yxy	3.2143, 0.4201, 0.3262
Android (android.graphics.Color)	4283181097 (0xFF4C2829)
YUV	50.8780, -4.8699, 22.0320
Hunter-Lab	17.9281, 9.8406, 4.2818

Details

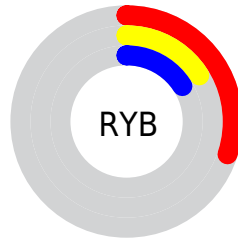
The HunterLab color **17.9281, 9.8406, 4.2818** is a dark color, and the websafe version is hex **663333**. A complement of this color would be **24.7549, -9.2170, -0.8514**, and the grayscale version is **18.1649, -0.9692, 0.9869**.

A 20% lighter version of the original color is **34.4086, 11.1667, 6.2274**, and **5.6862, 9.7379, 3.6743** is the 20% darker color. If you saturate the color by 10%, you get **16.4456, 12.3680, 4.9996**, and if you desaturate by 10%, it is **19.5822, 7.3230, 3.6000**.

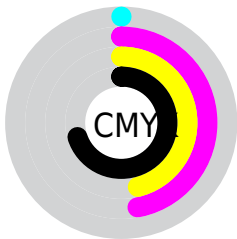
Distribution



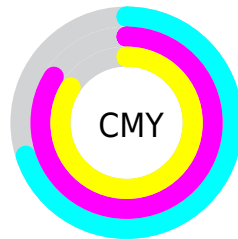
- Red (30%)
- Green (16%)
- Blue (16%)



- Red (30%)
- Yellow (16%)
- Blue (16%)



- Cyan (0%)
- Magenta (47%)
- Yellow (46%)
- Black (70%)



- Cyan (70%)
- Magenta (84%)
- Yellow (84%)

Brightness & Saturation Gradients

These gradients show how the HunterLab color 17.9281, 9.8406, 4.2818 changes by changing the brightness by 10 percent. The first figure shows a shift by +10% for each color and the second figure -10%.

Similar to the brightness gradients but the following saturation gradients show a change of the HunterLab color 17.9281, 9.8406, 4.2818 by changing the saturation by 10% instead.

■ 17.9281, 9.8406,
4.2818

■ 17.9281, 9.8406,
4.2818

■ 114.3974, 12.4904,
12.8498

■ 11.1563, 8.9789,
3.3441

■ 34.3386, 11.0958,
6.1357

■ 3.1258, 23.4494,
2.1881

■ 43.7807, 11.5410,
7.0584

0.0000, NaN, NaN

■ 53.9579, 11.8876,
7.9887

0.0000, NaN, NaN

■ 64.8205, 12.1480,
8.9305

0.0000, NaN, NaN

■ 76.3276, 12.3315,
9.8862

0.0000, NaN, NaN

■ 88.4450, 12.4459,

0.0000, NaN, NaN

101.1435, 12.4972,
11.8451

17.9281, 9.8406,
4.2818

17.9281, 9.8406,
4.2818

16.4456, 12.3680,
4.9996

19.5822, 7.3230,
3.6000

15.1622, 14.8220,
5.7298

21.3810, 4.8660,
2.9636

14.1072, 17.0700,
6.4337

23.3032, 2.4898,
2.3753

13.3047, 18.9475,
7.0584

25.3310, 0.1994,
1.8330

12.6049, 20.7706,
7.5832

27.4497, -2.0086,
1.3326

■ 12.4142, 21.2968,
7.7334

■ 29.6479, -4.1418,
0.8691

■ 31.9158, -6.2093,
0.4378

■ 34.2459, -8.2202,
0.0343

■ 36.6317, -10.1828,
-0.3454

Harmonies

Analogous

The Analogous color harmony consists of three colors that are next to each other on the color wheel.



17.9286, 10.6197, -0.5198



17.9281, 9.8406, 4.2818



17.9286, 5.9998, 7.1638

Triad

The Triadic color harmony groups three colors that are evenly spaced from another and form a triangle on the color wheel.



17.9286, 9.8396, 4.2821



17.9286, -8.4553, 6.1141



17.9286, -2.4418, -11.9368

Complementary

The Complementary color scheme is a pair of colors which are on the opposite of each other on the color wheel.



17.9281, 9.8406, 4.2818



24.7549, -9.2170, -0.8514

Split Complementary

Split-complementary colors differ from the complementary color scheme. The scheme consists of three colors, the original color and two neighbors of the complement color.



17.9286, -6.9930, -8.7297



17.9281, 9.8406, 4.2818



17.9286, -10.1837, 2.3529

Square

The Square scheme is like the rectangle color scheme, but the four colors are evenly spaced on the color wheel.



17.9286, 9.8396, 4.2821



17.9286, -4.6674, 7.9807



17.9286, -9.6823, -3.1117



17.9286, 3.0808, -10.9576

Rectangle

The Rectangle color scheme consists of four colors that form a rectangle on the color wheel.



17.9281, 9.8406, 4.2818



17.9286, 2.4467, 8.0892



17.9286, -9.6823, -3.1117



17.9286, -4.1254, -11.2851

Sweetspot

The Sweet Spot groups the original color and five complimentary colors.



17.9286, 9.8396, 4.2821



31.5101, 2.4194, 2.9273



18.7812, 14.1728, -9.7640



15.9829, 1.4376, 1.5480



66.9319, -3.5713, 3.6365



18.1947, -0.9708, 0.9886

Same Dimension

The Same Dimension uses a secret algorithm to generate beautiful new colors.



17.9286, 9.8396, 4.2821



21.3847, 16.9259, 6.7749



21.4391, 2.5862, 7.7037



13.0534, 0.2567, 0.9902



16.8255, 28.8510, 10.5867



40.9321, 70.1315, 26.1852

Inverse Universe

The Inverse Universe completely reimagines the original color for something new.



17.9286, 9.8396, 4.2821



21.3847, 16.9259, 6.7749



20.3017, -2.5216, -7.5027



13.0534, 0.2567, 0.9902



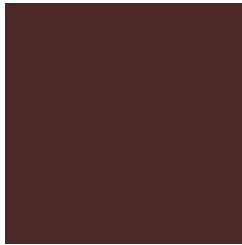
16.8255, 28.8510, 10.5867



40.9321, 70.1315, 26.1852

Previews

White Background



This preview shows how the HunterLab color 17.9281, 9.8406, 4.2818 looks on a white background.

Color Contrast Check

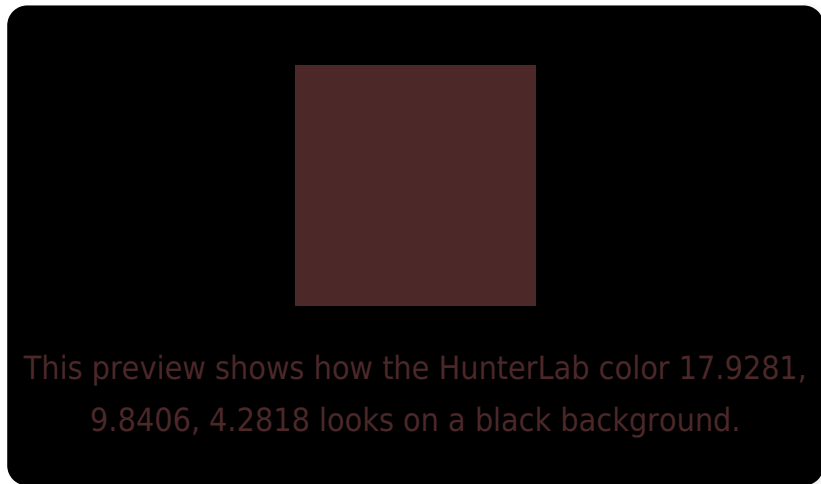
Large Text (above 18pt) WCAG AA ✓ Pass

Any Text WCAG AA ✓ Pass

Large Text (above 18pt) WCAG AAA ✓ Pass

Any Text WCAG AAA ✓ Pass

Black Background



Color Contrast Check

Large Text (above 18pt) WCAG AA × Fail

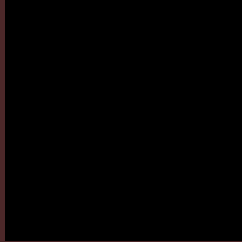
Any Text WCAG AA × Fail

Large Text (above 18pt) WCAG AAA × Fail

Any Text WCAG AAA × Fail

If you want to check with other color combinations, try the [Color Contrast Checker](#).

HunterLab 17.9281, 9.8406, 4.2818 Background



This preview shows how black text looks on a background with the HunterLab color 17.9281, 9.8406, 4.2818.



This preview shows how white text looks on a background with the HunterLab color 17.9281, 9.8406,

Color Blindness Simulation

Color vision deficiency is a very complex topic, and I could not describe the different causes any better than Wikipedia does, so if you want to learn more, you should check out their [article about color blindness](#).

Dichromacy



Original Color

17.9281, 9.8406, 4.2818

Protanopia

18.2258, -1.0919, 2.8031

Deuteranopia

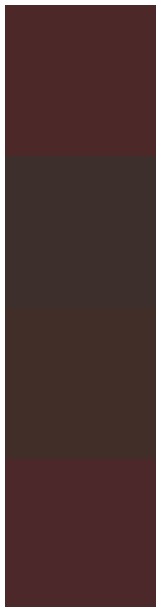
18.1763, 0.8741, 4.9543



Tritanopia

17.9680, 10.0350, 3.7059

Trichromacy



Original Color

17.9281, 9.8406, 4.2818

Protanomaly

17.9080, 2.5069, 3.1895

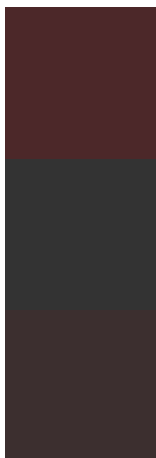
Deuteranomaly

18.0705, 4.0040, 4.6185

Tritanomaly

17.9478, 9.9367, 3.9971

Monochromacy



Original Color

17.9281, 9.8406, 4.2818

Achromatopsia

18.1947, -0.9708, 0.9886

Achromatomaly

17.8855, 2.5637, 2.1508

CSS Examples

Text

The CSS property to change the color of the text to HunterLab 17.9281, 9.8406, 4.2818 is called "color". The color property can be set on classes, ids or directly on the HTML element.

This example shows how text in the color `rgb(76, 40, 41)` looks like.

```
.text, #text, p{  
    color:rgb(76, 40, 41)  
}
```

If you want to add a text shadow in that color use the text-shadow property, you can generate a text shadow directly with our [CSS Text Shadow Generator](#).

Here you see how black text with a 4 pixel rgb(76, 40, 41) colored shadow looks like.

```
.shadow{ text-shadow: 4px 4px 2px rgb(76, 40, 41) }
```

Border

The CSS property to change the border of an element to HunterLab 17.9281, 9.8406, 4.2818 is called "border". The border property can be set on classes, ids or directly on the HTML element.

This example shows the color as border, it can be applied via the CSS property "border" or "border-color".

```
.border, #border, table{ border:4px solid rgb(76, 40, 41) }
```


If only the border color should be changed use the property `border-color`.

```
.border{ border-color:rgb(76, 40, 41) }
```

If you want to add a box shadow in that color use:

Here you see how a box with a 4 pixel `rgb(76, 40, 41)` colored shadow looks like.

```
.boxshadow{ -moz-box-shadow:4px 4px 4px  
4px rgb(76, 40, 41); -webkit-box-  
shadow:4px 4px 4px 4px rgb(76, 40, 41);  
box-shadow:4px 4px 4px 4px rgb(76, 40, 41)  
}
```

Background

The CSS property to change the background color of an element to HunterLab 17.9281, 9.8406, 4.2818 is called "background". The background property can be set on classes, ids or directly on the HTML element.

```
.background, #background, body{  
background: rgb(76, 40, 41) }
```

If only the background color should be changed can be used:

```
.background{ background-color: rgb(76, 40,  
41) }
```

This example shows the color as background, it is applied via the CSS property "background".

To optimize and compress your CSS code, you can use our [online CSS compressor and optimizer](#) based on csstidy. If you want to create a linear or radial gradient as background or border, check our [CSS Gradient Generator](#).

Hey! You found this booklet interesting? Support Converting Colors with the new Membership Option!

The pro membership hides all ads, plus gives you double the colors in the color bucket, and more awesome pro features!

[Learn more, Memberships starting at \\$2.50/m!](#)

**Follow me
on Twitter!**

@ConvertingColor