

Converting Colors

HunterLab(17.8143, 0.5660,
6.6725)

Have a look what the booklet for
HunterLab(17.8143, 0.5660, 6.6725)
contains.

HunterLab(17.8143, 0.5660, 6.6725)	3
<i>Conversions</i>	4
<i>Details</i>	6
<i>Harmonies</i>	12
<i>Previews</i>	24
<i>Color Blindness Simulation</i>	28
<i>CSS Examples</i>	31

Color

**HunterLab(17.8143, 0.5660,
6.6725)**

Conversions

Conversions Part 1

Format	Color
Hex	3C301F
RGB	60, 48, 31
RGB Percent	24%, 19%, 12%
CMY	0.7647, 0.8118, 0.8784
CMYK	0.00, 0.20, 0.48, 0.76
HSL	35°, 32%, 18%
HSV	35°, 48%, 24%
XYZ	3.1678, 3.1735, 1.7419
YIQ	49.6500, 12.6090, -2.7430

Conversions

Conversions Part 2

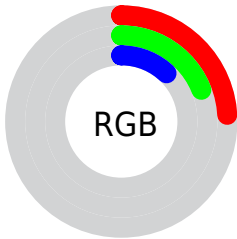
Format	Color
RYB	51, 60, 31
Decimal	3944479
CIELab	20.73, 2.61, 12.93
CIELCh	21, 13.186, 78.605
Yxy	3.1736, 0.3919, 0.3926
Android (android.graphics.Color)	4282134559 (0xFF3C301F)
YUV	49.6500, -9.1944, 9.0770
Hunter-Lab	17.8143, 0.5660, 6.6725

Details

The HunterLab color **17.8143, 0.5660, 6.6725** is a dark color, and the websafe version is hex **333333**. A complement of this color would be **15.3142, -0.6377, -7.1255**, and the grayscale version is **17.7695, -0.9481, 0.9655**.

A 20% lighter version of the original color is **34.2075, -0.0786, 9.5396**, and **2.6673, 4.5679, 1.7236** is the 20% darker color. If you saturate the color by 10%, you get **17.1683, 1.1184, 7.4223**, and if you desaturate by 10%, it is **18.4853, 0.0847, 5.7780**.

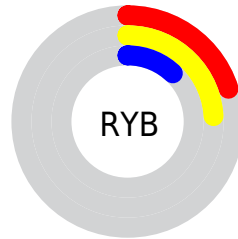
Distribution



Red (24%)

Green (19%)

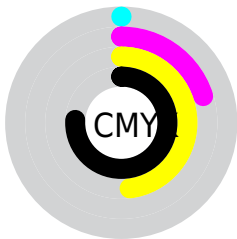
Blue (12%)



Red (20%)

Yellow (24%)

Blue (12%)

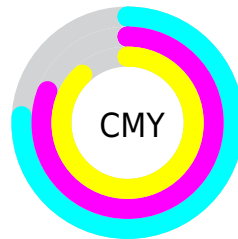


Cyan (0%)

Magenta (20%)

Yellow (48%)

Black (76%)



Cyan (76%)

Magenta (81%)

Yellow (88%)

Brightness & Saturation Gradients

These gradients show how the HunterLab color 17.8143, 0.5660, 6.6725 changes by changing the brightness by 10 percent. The first figure shows a shift by +10% for each color and the second figure -10%.

Similar to the brightness gradients but the following saturation gradients show a change of the HunterLab color 17.8143, 0.5660, 6.6725 by changing the saturation by 10% instead.

■ 17.8143, 0.5660,
6.6725

■ 17.8143, 0.5660,
6.6725

■ 114.1861, -3.3138,
18.5393

■ 11.0591, 0.7112,
5.6545

■ 34.1971, 0.0477,
9.5085

■ 2.8356, 3.8517,
1.9849

■ 43.6273, -0.3007,
10.8412

0.0000, NaN, NaN

■ 53.7935, -0.6994,
12.1455

0.0000, NaN, NaN

■ 64.6457, -1.1438,
13.4329

0.0000, NaN, NaN

■ 76.1430, -1.6302,
14.7113

0.0000, NaN, NaN

■ 88.2511, -2.1555,

0.0000, NaN, NaN

15.9861

0.0000, NaN, NaN

100.9407, -2.7174,
17.2611

17.8143, 0.5660,
6.6725

17.8143, 0.5660,
6.6725

17.1683, 1.1184,
7.4223

18.4853, 0.0847,
5.7780

16.5473, 1.7456,
8.0193

19.1788, -0.3258,
4.7465

15.9529, 2.4470,
8.4577

19.8939, -0.6690,
3.5865

15.3845, 3.2118,
8.7613

20.6294, -0.9482,
2.3068

14.8321, 3.9801,
9.0942

21.3842, -1.1666,
0.9154

■ 14.7414, 4.1075,
9.1555

■ 22.1573, -1.3277,
-0.5797

■ 22.9476, -1.4350,
-2.1712

■ 23.7543, -1.4916,
-3.8522

■ 24.5764, -1.5009,
-5.6164

Harmonies

Analogous

The Analogous color harmony consists of three colors that are next to each other on the color wheel.



17.8147, 4.3226, 5.5612



17.8143, 0.5660, 6.6725



17.8147, -3.2976, 6.5233

Triad

The Triadic color harmony groups three colors that are evenly spaced from another and form a triangle on the color wheel.



17.8147, 0.5653, 6.6727



17.8147, -7.5591, -1.4781



17.8147, 5.0755, -4.4651

Complementary

The Complementary color scheme is a pair of colors which are on the opposite of each other on the color wheel.



17.8143, 0.5660, 6.6725



15.3142, -0.6377, -7.1255

Split Complementary

Split-complementary colors differ from the complementary color scheme. The scheme consists of three colors, the original color and two neighbors of the complement color.



17.8147, 1.5227, -7.2715



17.8143, 0.5660, 6.6725



17.8147, -5.6755, -5.3056

Square

The Square scheme is like the rectangle color scheme, but the four colors are evenly spaced on the color wheel.



17.8147, 0.5653, 6.6727



17.8147, -7.7670, 2.3315



17.8147, -2.4192, -7.6086



17.8147, 7.0731, -0.5089

Rectangle

The Rectangle color scheme consists of four colors that form a rectangle on the color wheel.



17.8143, 0.5660, 6.6725



17.8147, -5.4232, 5.7200



17.8147, -2.4192, -7.6086



17.8147, 4.0100, -5.6079

Sweetspot

The Sweet Spot groups the original color and five complimentary colors.



17.8147, 0.5653, 6.6727



26.5373, -1.0248, 4.1217



14.5455, 8.7971, -0.2321



14.0136, -0.5240, 2.2664



62.6995, -3.3455, 3.4066



14.8260, -0.7911, 0.8055

Same Dimension

The Same Dimension uses a secret algorithm to generate beautiful new colors.



17.8147, 0.5653, 6.6727



22.3953, 1.6648, 9.9806



20.5371, -4.7896, 8.8285



11.2338, -0.5148, 1.2661



22.7167, 7.6525, 14.1319



56.1138, 22.8999, 34.9780

Inverse Universe

The Inverse Universe completely reimagines the original color for something new.



15.3142, -0.6377, -7.1255



18.3389, -0.1442, -12.6482



12.7926, 4.7696, -11.8468



10.9842, -0.6460, -0.0919



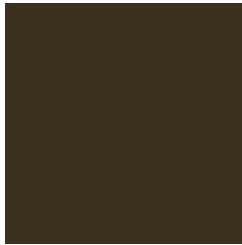
15.0595, 6.3939, -32.6256



35.8936, 21.5960, -91.4835

Previews

White Background



This preview shows how the HunterLab color 17.8143, 0.5660, 6.6725 looks on a white background.

Color Contrast Check

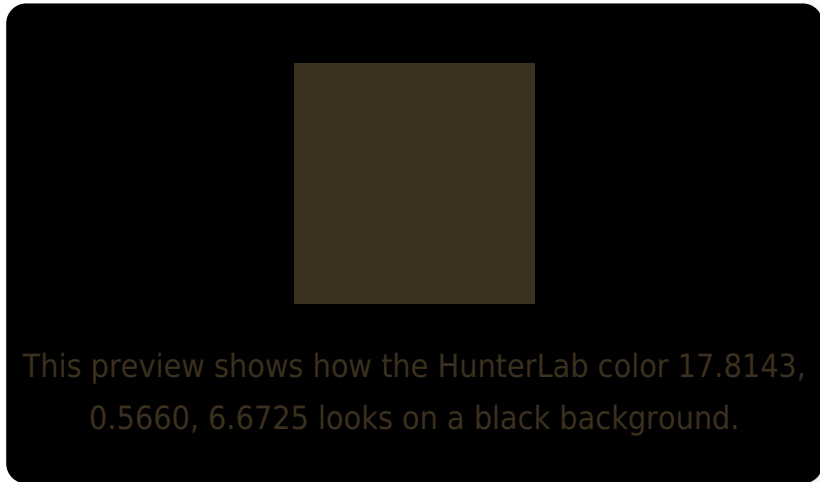
Large Text (above 18pt) WCAG AA ✓ Pass

Any Text WCAG AA ✓ Pass

Large Text (above 18pt) WCAG AAA ✓ Pass

Any Text WCAG AAA ✓ Pass

Black Background



Color Contrast Check

Large Text (above 18pt) WCAG AA × Fail

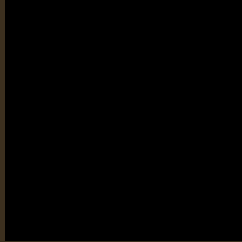
Any Text WCAG AA × Fail

Large Text (above 18pt) WCAG AAA × Fail

Any Text WCAG AAA × Fail

If you want to check with other color combinations, try the [Color Contrast Checker](#).

HunterLab 17.8143, 0.5660, 6.6725 Background



This preview shows how black text looks on a background with the HunterLab color 17.8143, 0.5660, 6.6725.

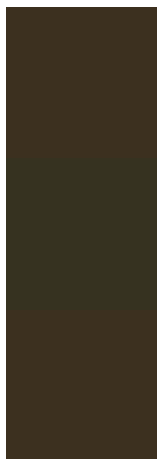


This preview shows how white text looks on a background with the HunterLab color 17.8143, 0.5660,

Color Blindness Simulation

Color vision deficiency is a very complex topic, and I could not describe the different causes any better than Wikipedia does, so if you want to learn more, you should check out their [article about color blindness](#).

Dichromacy



Original Color

17.8143, 0.5660, 6.6725

Protanopia

17.8038, -1.8545, 6.3875

Deuteranopia

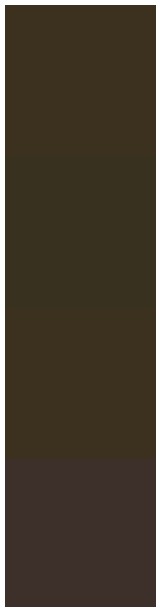
17.8143, 0.5660, 6.6725



Tritanopia

17.8882, 3.8003, 1.4582

Trichromacy



Original Color

17.8143, 0.5660, 6.6725

Protanomaly

17.7247, -0.9079, 6.3350

Deuteranomaly

17.8143, 0.5660, 6.6725

Tritanomaly

17.8670, 2.2898, 3.7807

Monochromacy



Original Color

17.8143, 0.5660, 6.6725

Achromatopsia

17.8595, -0.9529, 0.9703

Achromatomaly

17.7632, -0.3795, 3.3104

CSS Examples

Text

The CSS property to change the color of the text to HunterLab 17.8143, 0.5660, 6.6725 is called "color". The color property can be set on classes, ids or directly on the HTML element.

This example shows how text in the color `rgb(60, 48, 31)` looks like.

```
.text, #text, p{  
    color:rgb(60, 48, 31)  
}
```

If you want to add a text shadow in that color use the text-shadow property, you can generate a text shadow directly with our [CSS Text Shadow Generator](#).

Here you see how black text with a 4 pixel rgb(60, 48, 31) colored shadow looks like.

```
.shadow{ text-shadow: 4px 4px 2px rgb(60, 48, 31) }
```

Border

The CSS property to change the border of an element to HunterLab 17.8143, 0.5660, 6.6725 is called "border". The border property can be set on classes, ids or directly on the HTML element.

This example shows the color as border, it can be applied via the CSS property "border" or "border-color".

```
.border, #border, table{ border:4px solid rgb(60, 48, 31) }
```


If only the border color should be changed use the property border-color.

```
.border{ border-color:rgb(60, 48, 31) }
```

If you want to add a box shadow in that color use:

Here you see how a box with a 4 pixel rgb(60, 48, 31) colored shadow looks like.

```
.boxshadow{ -moz-box-shadow:4px 4px 4px  
4px rgb(60, 48, 31); -webkit-box-  
shadow:4px 4px 4px 4px rgb(60, 48, 31);  
box-shadow:4px 4px 4px 4px rgb(60, 48, 31)  
}
```

Background

The CSS property to change the background color of an element to HunterLab 17.8143, 0.5660, 6.6725 is called "background". The background property can be set on classes, ids or directly on the HTML element.

```
.background, #background, body{  
background: rgb(60, 48, 31) }
```

If only the background color should be changed can be used:

```
.background{ background-color: rgb(60, 48,  
31) }
```

This example shows the color as background, it is applied via the CSS property "background".

To optimize and compress your CSS code, you can use our [online CSS compressor and optimizer](#) based on csstidy. If you want to create a linear or radial gradient as background or border, check our [CSS Gradient Generator](#).

Hey! You found this booklet interesting? Support Converting Colors with the new Membership Option!

The pro membership hides all ads, plus gives you double the colors in the color bucket, and more awesome pro features!

[Learn more, Memberships starting at \\$2.50/m!](#)

**Follow me
on Twitter!**

@ConvertingColor