

Converting Colors

HunterLab(17.8247, 4.7655,
3.7783)

Have a look what the booklet for
HunterLab(17.8247, 4.7655, 3.7783)
contains.

HunterLab(17.8947, 4.6251, 3.8499)	3
<i>Conversions</i>	4
<i>Details</i>	6
<i>Harmonies</i>	12
<i>Previews</i>	24
<i>Color Blindness Simulation</i>	28
<i>CSS Examples</i>	31

Color

**HunterLab(17.8947, 4.6251,
3.8499)**

Conversions

Conversions Part 1

Format	Color
Hex	422D2A
RGB	66, 45, 42
RGB Percent	26%, 18%, 16%
CMY	0.7412, 0.8235, 0.8353
CMYK	0.00, 0.32, 0.36, 0.74
HSL	8°, 22%, 21%
HSV	8°, 36%, 26%
XYZ	3.6031, 3.2022, 2.6187
YIQ	50.9370, 13.4790, 3.5190

Conversions

Conversions Part 2

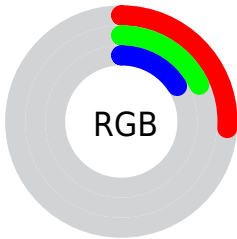
Format	Color
R_{YB}	66, 45, 42
Decimal	4336938
CIE Lab	20.84, 9.19, 5.78
CIE LCh	21, 10.854, 32.183
Yxy	3.2024, 0.3823, 0.3398
Android (android.graphics.Color)	4282527018 (0xFF422D2A)
YUV	50.9370, -4.4059, 13.2103
Hunter-Lab	17.8947, 4.6251, 3.8499

Details

The HunterLab color **17.8947, 4.6251, 3.8499** is a dark color, and the websafe version is hex **333333**. A complement of this color would be **21.0724, -5.4020, -1.6121**, and the grayscale version is **18.1851, -0.9703, 0.9880**.

A 20% lighter version of the original color is **34.3731, 4.9238, 5.7137**, and **4.2680, 7.3091, 2.7579** is the 20% darker color. If you saturate the color by 10%, you get **16.5772, 6.4069, 4.5276**, and if you desaturate by 10%, it is **19.2998, 2.9139, 3.1521**.

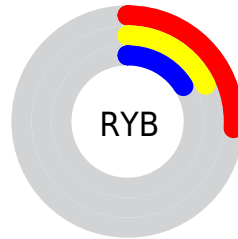
Distribution



Red (26%)

Green (18%)

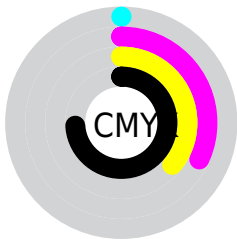
Blue (16%)



Red (26%)

Yellow (18%)

Blue (16%)

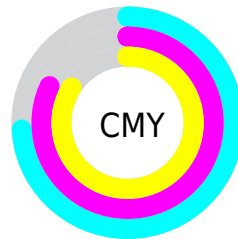


Cyan (0%)

Magenta (32%)

Yellow (36%)

Black (74%)



Cyan (74%)

Magenta (82%)

Yellow (84%)

Brightness & Saturation Gradients

These gradients show how the HunterLab color 17.8947, 4.6251, 3.8499 changes by changing the brightness by 10 percent. The first figure shows a shift by +10% for each color and the second figure -10%.

Similar to the brightness gradients but the following saturation gradients show a change of the HunterLab color 17.8947, 4.6251, 3.8499 by changing the saturation by 10% instead.

■ 17.8947, 4.6251,
3.8499

■ 17.8947, 4.6251,
3.8499

■ 114.3354, 3.8363,
11.9237

■ 11.1278, 4.2699,
2.9829

■ 34.2970, 4.9621,
5.5587

■ 3.0435, 12.9891,
2.1305

■ 43.7357, 4.9906,
6.4202

0.0000, NaN, NaN

0.0000, NaN, NaN

■ 53.9096, 4.9440,
7.2945

0.0000, NaN, NaN

■ 64.7692, 4.8313,
8.1843

0.0000, NaN, NaN

■ 76.2734, 4.6592,
9.0913

0.0000, NaN, NaN

0.0000, NaN, NaN

■ 88.3881, 4.4332,

10.0166

0.0000, NaN, NaN

101.0839, 4.1577,
10.9606

17.8947, 4.6251,
3.8499

17.8947, 4.6251,
3.8499

16.5772, 6.4069,
4.5276

19.2998, 2.9139,
3.1521

15.3591, 8.2497,
5.1712

20.7800, 1.2782,
2.4421

14.2558, 10.1266,
5.7624

22.3263, -0.2855,
1.7257

13.2839, 11.9913,
6.2767

23.9310, -1.7826,
1.0063

12.4595, 13.7725,
6.6887

25.5874, -3.2197,
0.2858

■ 11.7827, 15.3196,
7.1818

■ 27.2901, -4.6035,
-0.4348

■ 11.5648, 15.8230,
7.4032

■ 29.0347, -5.9407,
-1.1552

■ 30.8173, -7.2371,
-1.8752

■ 32.6346, -8.4981,
-2.5950

Harmonies

Analogous

The Analogous color harmony consists of three colors that are next to each other on the color wheel.



17.8951, 5.7003, 1.1982



17.8947, 4.6251, 3.8499



17.8951, 2.0433, 5.4605

Triad

The Triadic color harmony groups three colors that are evenly spaced from another and form a triangle on the color wheel.



17.8951, 4.6243, 3.8502



17.8951, -6.1361, 3.5234



17.8951, -0.7181, -6.0124

Complementary

The Complementary color scheme is a pair of colors which are on the opposite of each other on the color wheel.



17.8947, 4.6251, 3.8499



21.0724, -5.4020, -1.6121

Split Complementary

Split-complementary colors differ from the complementary color scheme. The scheme consists of three colors, the original color and two neighbors of the complement color.



17.8951, -3.7695, -5.0957



17.8947, 4.6251, 3.8499



17.8951, -6.7620, 0.7470

Square

The Square scheme is like the rectangle color scheme, but the four colors are evenly spaced on the color wheel.



17.8951, 4.6243, 3.8502



17.8951, -4.1526, 5.2967



17.8951, -5.9262, -2.4763



17.8951, 2.4825, -4.7985

Rectangle

The Rectangle color scheme consists of four colors that form a rectangle on the color wheel.



17.8947, 4.6251, 3.8499



17.8951, -0.1011, 5.9043



17.8951, -5.9262, -2.4763



17.8951, -1.7948, -5.9430

Sweetspot

The Sweet Spot groups the original color and five complimentary colors.



17.8951, 4.6243, 3.8502



28.3715, 0.6668, 2.7583



17.8195, 8.6597, -4.6127



14.3961, 0.3845, 1.4245



63.7533, -3.4017, 3.4638



15.6573, -0.8354, 0.8507

Same Dimension

The Same Dimension uses a secret algorithm to generate beautiful new colors.



17.8951, 4.6243, 3.8502



21.9216, 8.3383, 5.9284



20.5718, -0.2691, 6.3582



11.6617, 0.0244, 0.9974



16.7384, 24.5833, 10.7445



40.9205, 64.8422, 26.3502

Inverse Universe

The Inverse Universe completely reimagines the original color for something new.



21.0724, -5.4020, -1.6121



27.1090, -8.1633, -3.0189



18.0854, -0.7484, -5.7665



12.0718, -1.2557, 0.2955



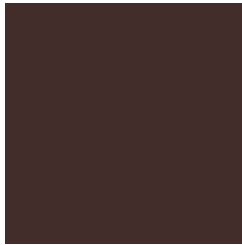
27.0625, -11.8453, -8.2550



67.1079, -28.7993, -21.7097

Previews

White Background



This preview shows how the HunterLab color 17.8947, 4.6251, 3.8499 looks on a white background.

Color Contrast Check

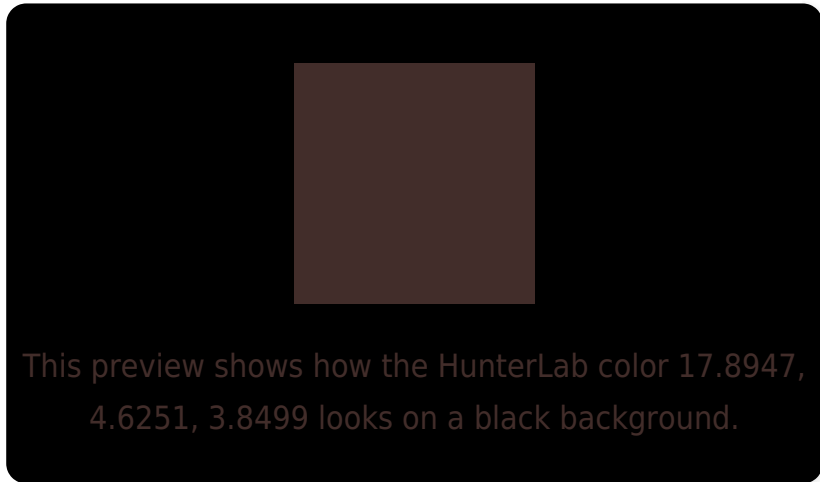
Large Text (above 18pt) WCAG AA ✓ Pass

Any Text WCAG AA ✓ Pass

Large Text (above 18pt) WCAG AAA ✓ Pass

Any Text WCAG AAA ✓ Pass

Black Background



Color Contrast Check

Large Text (above 18pt) WCAG AA × Fail

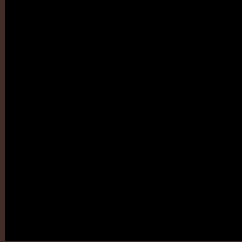
Any Text WCAG AA × Fail

Large Text (above 18pt) WCAG AAA × Fail

Any Text WCAG AAA × Fail

If you want to check with other color combinations, try the [Color Contrast Checker](#).

HunterLab 17.8947, 4.6251, 3.8499 Background



This preview shows how black text looks on a background with the HunterLab color 17.8947, 4.6251, 3.8499.



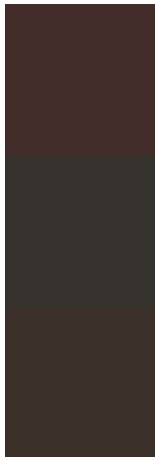
This preview shows how white text looks on a background with the HunterLab color 17.8947, 4.6251,

3.8499.

Color Blindness Simulation

Color vision deficiency is a very complex topic, and I could not describe the different causes any better than Wikipedia does, so if you want to learn more, you should check out their [article about color blindness](#).

Dichromacy



Original Color

17.8947, 4.6251, 3.8499

Protanopia

17.9654, -0.8128, 2.8627

Deuteranopia

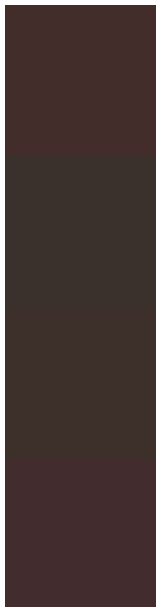
17.8144, 0.9098, 4.0111



Tritanopia

17.9110, 6.0171, 1.8856

Trichromacy



Original Color

17.8947, 4.6251, 3.8499

Protanomaly

17.8754, 1.2368, 3.1328

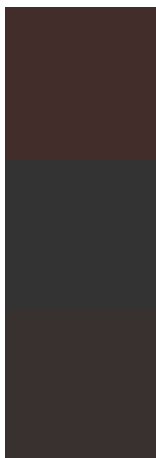
Deuteranomaly

17.8472, 2.1849, 4.0665

Tritanomaly

17.8659, 5.7872, 2.5324

Monochromacy



Original Color

17.8947, 4.6251, 3.8499

Achromatopsia

18.1947, -0.9708, 0.9886

Achromatomaly

18.0299, 0.7491, 1.9276

CSS Examples

Text

The CSS property to change the color of the text to HunterLab 17.8947, 4.6251, 3.8499 is called "color". The color property can be set on classes, ids or directly on the HTML element.

This example shows how text in the color `rgb(66, 45, 42)` looks like.

```
.text, #text, p{  
    color:rgb(66, 45, 42)  
}
```

If you want to add a text shadow in that color use the text-shadow property, you can generate a text shadow directly with our [CSS Text Shadow Generator](#).

Here you see how black text with a 4 pixel rgb(66, 45, 42) colored shadow looks like.

```
.shadow{ text-shadow: 4px 4px 2px rgb(66, 45, 42) }
```

Border

The CSS property to change the border of an element to HunterLab 17.8947, 4.6251, 3.8499 is called "border".

The border property can be set on classes, ids or directly on the HTML element.

This example shows the color as border, it can be applied via the CSS property "border" or "border-color".

```
.border, #border, table{ border:4px solid rgb(66, 45, 42) }
```


If only the border color should be changed use the property `border-color`.

```
.border{ border-color:rgb(66, 45, 42) }
```

If you want to add a box shadow in that color use:

Here you see how a box with a 4 pixel `rgb(66, 45, 42)` colored shadow looks like.

```
.boxshadow{ -moz-box-shadow:4px 4px 4px  
4px rgb(66, 45, 42); -webkit-box-  
shadow:4px 4px 4px 4px rgb(66, 45, 42);  
box-shadow:4px 4px 4px 4px rgb(66, 45, 42)  
}
```

Background

The CSS property to change the background color of an element to HunterLab 17.8947, 4.6251, 3.8499 is called "background". The background property can be set on classes, ids or directly on the HTML element.

```
.background, #background, body{  
background: rgb(66, 45, 42) }
```

If only the background color should be changed can be used:

```
.background{ background-color: rgb(66, 45,  
42) }
```

This example shows the color as background, it is applied via the CSS property "background".

To optimize and compress your CSS code, you can use our [online CSS compressor and optimizer](#) based on csstidy. If you want to create a linear or radial gradient as background or border, check our [CSS Gradient Generator](#).

Hey! You found this booklet interesting? Support Converting Colors with the new Membership Option!

The pro membership hides all ads, plus gives you double the colors in the color bucket, and more awesome pro features!

[Learn more, Memberships starting at \\$2.50/m!](#)

**Follow me
on Twitter!**

@ConvertingColor