

Converting Colors

HunterLab(17.8595, 5.7013,
6.1732)

Have a look what the booklet for
HunterLab(17.8595, 5.7013, 6.1732)
contains.

HunterLab(17.9414, 5.5652, 6.1517)	3
<i>Conversions</i>	4
<i>Details</i>	6
<i>Harmonies</i>	12
<i>Previews</i>	24
<i>Color Blindness Simulation</i>	28
<i>CSS Examples</i>	31

Color

**HunterLab(17.9414, 5.5652,
6.1517)**

Conversions

Conversions Part 1

Format	Color
Hex	462C22
RGB	70, 44, 34
RGB Percent	27%, 17%, 13%
CMY	0.7255, 0.8274, 0.8667
CMYK	0.00, 0.37, 0.51, 0.73
HSL	17°, 35%, 20%
HSV	17°, 51%, 27%
XYZ	3.7152, 3.2189, 1.9389
YIQ	50.6340, 18.7060, 2.4020

Conversions

Conversions Part 2

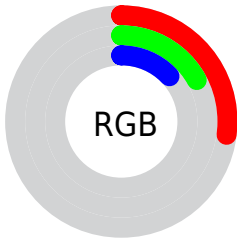
Format	Color
RYB	70, 48, 34
Decimal	4598818
CIELab	20.90, 10.63, 11.39
CIElCh	21, 15.586, 46.978
Yxy	3.2191, 0.4187, 0.3628
Android (android.graphics.Color)	4282788898 (0xFF462C22)
YUV	50.6340, -8.2006, 16.9840
Hunter-Lab	17.9414, 5.5652, 6.1517

Details

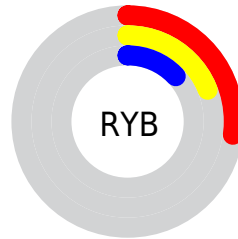
The HunterLab color **17.9414, 5.5652, 6.1517** is a dark color, and the websafe version is hex **663333**. A complement of this color would be **20.0345, -4.9373, -4.8890**, and the grayscale version is **18.0944, -0.9655, 0.9831**.

A 20% lighter version of the original color is **34.4318, 5.9827, 8.9100**, and **4.5461, 7.7854, 2.9376** is the 20% darker color. If you saturate the color by 10%, you get **16.8189, 7.1541, 6.8336**, and if you desaturate by 10%, it is **19.1405, 4.0564, 5.3670**.

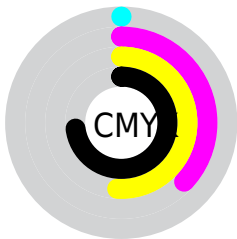
Distribution



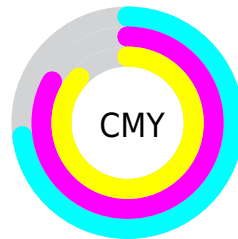
- Red (27%)
- Green (17%)
- Blue (13%)



- Red (27%)
- Yellow (19%)
- Blue (13%)



- Cyan (0%)
- Magenta (37%)
- Yellow (51%)
- Black (73%)



- Cyan (73%)
- Magenta (83%)
- Yellow (87%)

Brightness & Saturation Gradients

These gradients show how the HunterLab color 17.9414, 5.5652, 6.1517 changes by changing the brightness by 10 percent. The first figure shows a shift by +10% for each color and the second figure -10%.

Similar to the brightness gradients but the following saturation gradients show a change of the HunterLab color 17.9414, 5.5652, 6.1517 by changing the saturation by 10% instead.

■ 17.9414, 5.5652,
6.1517

■ 17.9414, 5.5652,
6.1517

■ 114.4220, 5.4321,
17.1787

■ 11.1676, 5.1090,
5.0708

■ 34.3551, 6.0799,
8.7352

■ 3.1579, 14.5045,
2.2106

■ 43.7986, 6.1882,
9.9632

0.0000, NaN, NaN

0.0000, NaN, NaN

■ 53.9771, 6.2165,
11.1723

0.0000, NaN, NaN

■ 64.8409, 6.1745,
12.3720

0.0000, NaN, NaN

■ 76.3491, 6.0698,
13.5687

0.0000, NaN, NaN

0.0000, NaN, NaN

■ 88.4677, 5.9081,

14.7667

0.0000, NaN, NaN

101.1671, 5.6943,
15.9693

17.9414, 5.5652,
6.1517

17.9414, 5.5652,
6.1517

16.8189, 7.1541,
6.8336

19.1405, 4.0564,
5.3670

15.7812, 8.8152,
7.3921

20.4066, 2.6333,
4.4960

14.8387, 10.5267,
7.8064

21.7327, 1.2933,
3.5534

13.9983, 12.2376,
8.1101

23.1125, 0.0321,
2.5512

13.3534, 13.6097,
8.4666

24.5403, -1.1564,
1.4986

■ 26.0116, -2.2784,
0.4032

■ 27.5223, -3.3405,
-0.7290

■ 29.0689, -4.3488,
-1.8933

■ 30.6483, -5.3090,
-3.0857

Harmonies

Analogous

The Analogous color harmony consists of three colors that are next to each other on the color wheel.



17.9418, 8.4273, 3.2888



17.9414, 5.5652, 6.1517



17.9418, 1.1028, 7.4482

Triad

The Triadic color harmony groups three colors that are evenly spaced from another and form a triangle on the color wheel.



17.9418, 5.5643, 6.1520



17.9418, -8.8708, 2.7907



17.9418, 1.7302, -9.2213

Complementary

The Complementary color scheme is a pair of colors which are on the opposite of each other on the color wheel.



17.9414, 5.5652, 6.1517



20.0345, -4.9373, -4.8890

Split Complementary

Split-complementary colors differ from the complementary color scheme. The scheme consists of three colors, the original color and two neighbors of the complement color.



17.9418, -2.9304, -9.4539



17.9414, 5.5652, 6.1517



17.9418, -8.7397, -1.6912

Square

The Square scheme is like the rectangle color scheme, but the four colors are evenly spaced on the color wheel.



17.9418, 5.5643, 6.1520



17.9418, -7.0430, 5.8678



17.9418, -6.6645, -6.4280



17.9418, 6.0638, -5.8560

Rectangle

The Rectangle color scheme consists of four colors that form a rectangle on the color wheel.



17.9414, 5.5652, 6.1517



17.9418, -2.0326, 7.5380



17.9418, -6.6645, -6.4280



17.9418, 0.1419, -9.6939

Sweetspot

The Sweet Spot groups the original color and five complimentary colors.



17.9418, 5.5643, 6.1520



29.7126, 0.7273, 3.9275



16.6633, 12.8742, -4.9156



14.9306, 0.4456, 2.0472



64.8100, -3.4581, 3.5212



16.4960, -0.8802, 0.8963

Same Dimension

The Same Dimension uses a secret algorithm to generate beautiful new colors.



17.9418, 5.5643, 6.1520



21.7415, 10.1124, 9.2624



21.9533, -1.7036, 9.4104



12.5267, -0.1646, 1.2043



18.6846, 20.8143, 11.8777



44.5911, 55.8402, 28.4544

Inverse Universe

The Inverse Universe completely reimagines the original color for something new.



20.0345, -4.9373, -4.8890



25.0831, -6.9204, -8.4903



15.7059, 2.1485, -12.1582



12.7266, -1.1480, 0.1577



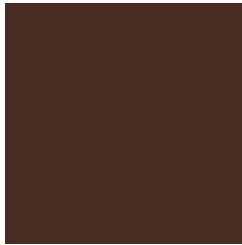
23.4967, -6.3301, -15.7040



56.6192, -13.5989, -41.4129

Previews

White Background



This preview shows how the HunterLab color 17.9414, 5.5652, 6.1517 looks on a white background.

Color Contrast Check

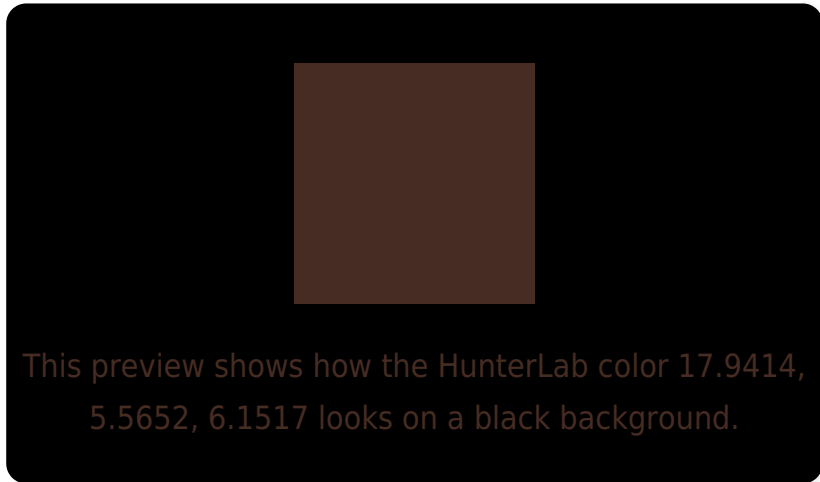
Large Text (above 18pt) WCAG AA ✓ Pass

Any Text WCAG AA ✓ Pass

Large Text (above 18pt) WCAG AAA ✓ Pass

Any Text WCAG AAA ✓ Pass

Black Background



Color Contrast Check

Large Text (above 18pt) WCAG AA × Fail

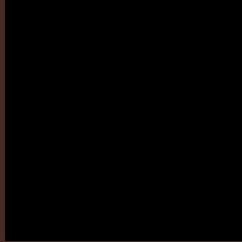
Any Text WCAG AA × Fail

Large Text (above 18pt) WCAG AAA × Fail

Any Text WCAG AAA × Fail

If you want to check with other color combinations, try the [Color Contrast Checker](#).

HunterLab 17.9414, 5.5652, 6.1517 Background



This preview shows how black text looks on a background with the HunterLab color 17.9414, 5.5652, 6.1517.

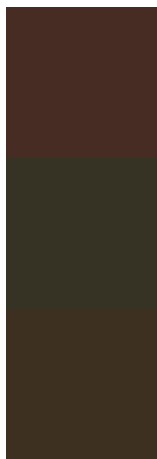


This preview shows how white text looks on a background with the HunterLab color 17.9414, 5.5652,

Color Blindness Simulation

Color vision deficiency is a very complex topic, and I could not describe the different causes any better than Wikipedia does, so if you want to learn more, you should check out their [article about color blindness](#).

Dichromacy



Original Color

17.9414, 5.5652, 6.1517

Protanopia

18.1259, -1.7923, 5.4126

Deuteranopia

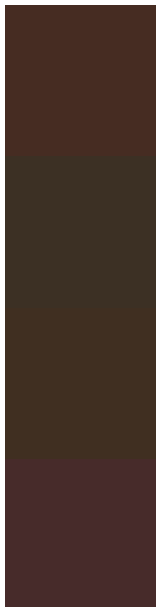
17.9327, 1.0270, 6.3108



Tritanopia

17.8683, 7.8865, 2.5718

Trichromacy



Original Color

17.9414, 5.5652, 6.1517

Protanomaly

17.8940, 0.9947, 5.5133

Deuteranomaly

17.9801, 2.3424, 6.3756

Tritanomaly

17.9848, 7.0392, 3.9840

Monochromacy



Original Color

17.9414, 5.5652, 6.1517

Achromatopsia

18.1947, -0.9708, 0.9886

Achromatomaly

17.8967, 1.3507, 2.8268

CSS Examples

Text

The CSS property to change the color of the text to HunterLab 17.9414, 5.5652, 6.1517 is called "color". The color property can be set on classes, ids or directly on the HTML element.

This example shows how text in the color `rgb(70, 44, 34)` looks like.

```
.text, #text, p{  
    color:rgb(70, 44, 34)  
}
```

If you want to add a text shadow in that color use the text-shadow property, you can generate a text shadow directly with our [CSS Text Shadow Generator](#).

Here you see how black text with a 4 pixel rgb(70, 44, 34) colored shadow looks like.

```
.shadow{ text-shadow: 4px 4px 2px rgb(70, 44, 34) }
```

Border

The CSS property to change the border of an element to HunterLab 17.9414, 5.5652, 6.1517 is called "border". The border property can be set on classes, ids or directly on the HTML element.

This example shows the color as border, it can be applied via the CSS property "border" or "border-color".

```
.border, #border, table{ border:4px solid rgb(70, 44, 34) }
```


If only the border color should be changed use the property border-color.

```
.border{ border-color:rgb(70, 44, 34) }
```

If you want to add a box shadow in that color use:

Here you see how a box with a 4 pixel rgb(70, 44, 34) colored shadow looks like.

```
.boxshadow{ -moz-box-shadow:4px 4px 4px  
4px rgb(70, 44, 34); -webkit-box-  
shadow:4px 4px 4px 4px rgb(70, 44, 34);  
box-shadow:4px 4px 4px 4px rgb(70, 44, 34)  
}
```

Background

The CSS property to change the background color of an element to HunterLab 17.9414, 5.5652, 6.1517 is called "background". The background property can be set on classes, ids or directly on the HTML element.

```
.background, #background, body{  
background: rgb(70, 44, 34) }
```

If only the background color should be changed can be used:

```
.background{ background-color: rgb(70, 44,  
34) }
```

This example shows the color as background, it is applied via the CSS property "background".

To optimize and compress your CSS code, you can use our [online CSS compressor and optimizer](#) based on csstidy. If you want to create a linear or radial gradient as background or border, check our [CSS Gradient Generator](#).

Hey! You found this booklet interesting? Support Converting Colors with the new Membership Option!

The pro membership hides all ads, plus gives you double the colors in the color bucket, and more awesome pro features!

[Learn more, Memberships starting at \\$2.50/m!](#)

**Follow me
on Twitter!**

@ConvertingColor