

Converting Colors

HunterLab(17.8754, 8.9212,
2.8621)

Have a look what the booklet for
HunterLab(17.8754, 8.9212, 2.8621)
contains.

HunterLab(17.8656, 8.8425, 2.9245)	3
<i>Conversions</i>	4
<i>Details</i>	6
<i>Harmonies</i>	12
<i>Previews</i>	24
<i>Color Blindness Simulation</i>	28
<i>CSS Examples</i>	31

Color

**HunterLab(17.8656, 8.8425,
2.9245)**

Conversions

Conversions Part 1

Format	Color
Hex	49292D
RGB	73, 41, 45
RGB Percent	29%, 16%, 18%
CMY	0.7137, 0.8392, 0.8235
CMYK	0.00, 0.44, 0.38, 0.71
HSL	353°, 28%, 22%
HSV	353°, 44%, 29%
XYZ	4.0142, 3.1918, 2.8871
YIQ	51.0240, 17.7880, 8.0280

Conversions

Conversions Part 2

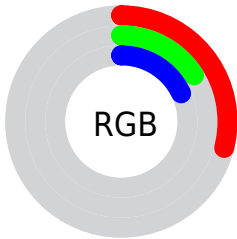
Format	Color
R_{YB}	73, 41, 45
Decimal	4794669
CIE Lab	20.80, 15.52, 3.80
CIE LCh	21, 15.977, 13.770
Yxy	3.1920, 0.3977, 0.3162
Android (android.graphics.Color)	4282984749 (0xFF49292D)
YUV	51.0240, -2.9698, 19.2730
Hunter-Lab	17.8656, 8.8425, 2.9245

Details

The HunterLab color **17.8656, 8.8425, 2.9245** is a dark color, and the websafe version is hex **663333**. A complement of this color would be **23.8038, -8.8772, 0.4881**, and the grayscale version is **18.2086, -0.9716, 0.9893**.

A 20% lighter version of the original color is **34.3259, 9.9492, 4.2300**, and **5.3973, 9.2430, 3.4876** is the 20% darker color. If you saturate the color by 10%, you get **16.3936, 11.2828, 3.4783**, and if you desaturate by 10%, it is **19.4875, 6.4116, 2.4543**.

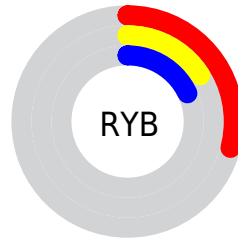
Distribution



Red (29%)

Green (16%)

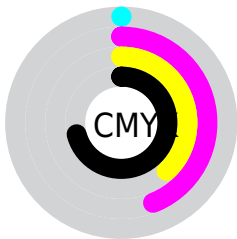
Blue (18%)



Red (29%)

Yellow (16%)

Blue (18%)

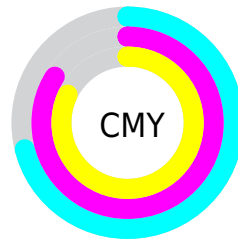


Cyan (0%)

Magenta (44%)

Yellow (38%)

Black (71%)



Cyan (71%)

Magenta (84%)

Yellow (82%)

Brightness & Saturation Gradients

These gradients show how the HunterLab color 17.8656, 8.8425, 2.9245 changes by changing the brightness by 10 percent. The first figure shows a shift by +10% for each color and the second figure -10%.

Similar to the brightness gradients but the following saturation gradients show a change of the HunterLab color 17.8656, 8.8425, 2.9245 by changing the saturation by 10% instead.

■ 17.8656, 8.8425,
2.9245

■ 17.8656, 8.8425,
2.9245

■ 114.2814, 10.8850,
10.0044

■ 11.1029, 8.0651,
2.2327

■ 34.2609, 9.9390,
4.3431

■ 2.9700, 22.6087,
2.0790

■ 43.6965, 10.3109,
5.0819

0.0000, NaN, NaN

■ 53.8676, 10.5880,
5.8434

0.0000, NaN, NaN

■ 64.7245, 10.7820,
6.6285

0.0000, NaN, NaN

■ 76.2263, 10.9021,
7.4373

0.0000, NaN, NaN

■ 88.3386, 10.9556,

0.0000, NaN, NaN

101.0321, 10.9483,
9.1255

17.8656, 8.8425,
2.9245

17.8656, 8.8425,
2.9245

16.3936, 11.2828,
3.4783

19.4875, 6.4116,
2.4543

15.0954, 13.6667,
4.1107

21.2358, 4.0302,
2.0630

13.9983, 15.8856,
4.8049

23.0926, 1.7137,
1.7431

13.1271, 17.7960,
5.5261

25.0426, -0.5337,
1.4861

12.4234, 19.4888,
6.1694

27.0735, -2.7150,
1.2834

■ 11.9852, 20.6918,
6.4517

■ 29.1752, -4.8361,
1.1272

■ 31.3398, -6.9043,
1.0110

■ 33.5603, -8.9268,
0.9289

■ 35.8314, -10.9105,
0.8762

Harmonies

Analogous

The Analogous color harmony consists of three colors that are next to each other on the color wheel.



17.8660, 8.7191, -1.6384



17.8656, 8.8425, 2.9245



17.8660, 6.1534, 6.0113

Triad

The Triadic color harmony groups three colors that are evenly spaced from another and form a triangle on the color wheel.



17.8660, 8.8416, 2.9248



17.8660, -6.8597, 6.1900



17.8660, -3.4430, -9.5803

Complementary

The Complementary color scheme is a pair of colors which are on the opposite of each other on the color wheel.



17.8656, 8.8425, 2.9245



23.8038, -8.8772, 0.4881

Split Complementary

Split-complementary colors differ from the complementary color scheme. The scheme consists of three colors, the original color and two neighbors of the complement color.



17.8660, -7.0995, -6.1667



17.8656, 8.8425, 2.9245



17.8660, -8.9262, 3.2405

Square

The Square scheme is like the rectangle color scheme, but the four colors are evenly spaced on the color wheel.



17.8660, 8.8416, 2.9248



17.8660, -3.0828, 7.5346



17.8660, -9.0091, -1.2285



17.8660, 1.2789, -9.7299

Rectangle

The Rectangle color scheme consists of four colors that form a rectangle on the color wheel.



17.8656, 8.8425, 2.9245



17.8660, 3.2772, 7.1563



17.8660, -9.0091, -1.2285



17.8660, -4.8252, -8.7430

Sweetspot

The Sweet Spot groups the original color and five complimentary colors.



17.8660, 8.8416, 2.9248



30.1325, 2.1288, 2.2555



18.2279, 11.4926, -9.0698



15.3923, 1.2987, 1.1898



65.8695, -3.5146, 3.5788



17.3419, -0.9253, 0.9422

Same Dimension

The Same Dimension uses a secret algorithm to generate beautiful new colors.



17.8660, 8.8416, 2.9248



21.1206, 15.0512, 4.6174



20.2451, 3.4445, 6.3910



12.3174, 0.2656, 0.8176



16.4489, 28.3371, 9.3282



40.5072, 69.5810, 24.5374

Inverse Universe

The Inverse Universe completely reimagines the original color for something new.



17.8660, 8.8416, 2.9248



21.1206, 15.0512, 4.6174



20.7813, -3.7256, -5.2436



12.3174, 0.2656, 0.8176



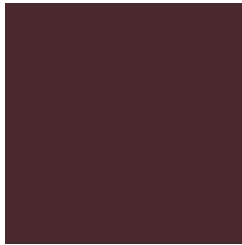
16.4489, 28.3371, 9.3282



40.5072, 69.5810, 24.5374

Previews

White Background



This preview shows how the HunterLab color 17.8656, 8.8425, 2.9245 looks on a white background.

Color Contrast Check

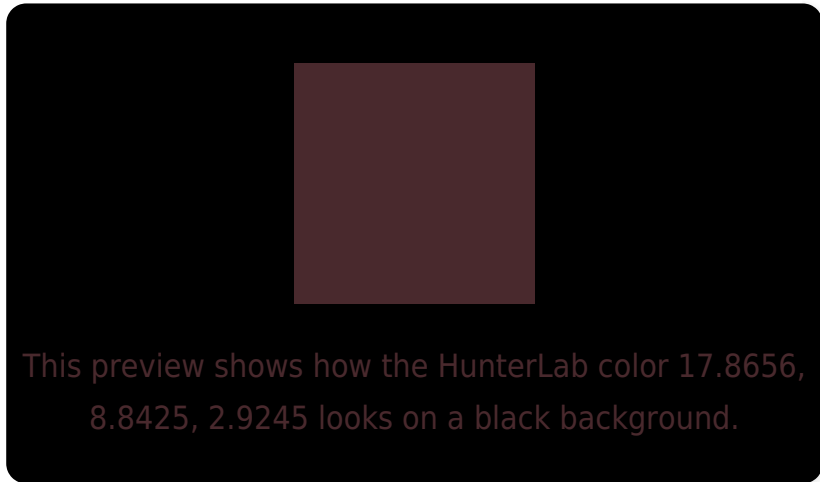
Large Text (above 18pt) WCAG AA ✓ Pass

Any Text WCAG AA ✓ Pass

Large Text (above 18pt) WCAG AAA ✓ Pass

Any Text WCAG AAA ✓ Pass

Black Background



Color Contrast Check

Large Text (above 18pt) WCAG AA × Fail

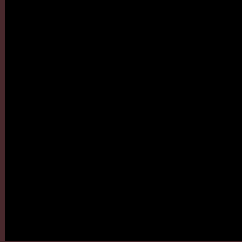
Any Text WCAG AA × Fail

Large Text (above 18pt) WCAG AAA × Fail

Any Text WCAG AAA × Fail

If you want to check with other color combinations, try the [Color Contrast Checker](#).

HunterLab 17.8656, 8.8425, 2.9245 Background



This preview shows how black text looks on a background with the HunterLab color 17.8656, 8.8425, 2.9245.

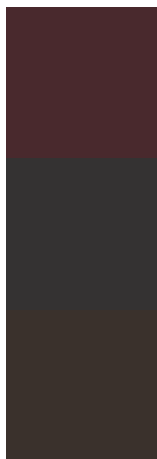


This preview shows how white text looks on a background with the HunterLab color 17.8656, 8.8425,

Color Blindness Simulation

Color vision deficiency is a very complex topic, and I could not describe the different causes any better than Wikipedia does, so if you want to learn more, you should check out their [article about color blindness](#).

Dichromacy



Original Color

17.8656, 8.8425, 2.9245

Protanopia

18.0043, -0.4511, 1.1490

Deuteranopia

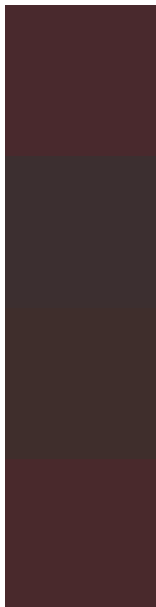
18.1053, 0.8293, 3.3676



Tritanopia

17.8443, 8.7374, 3.2311

Trichromacy



Original Color

17.8656, 8.8425, 2.9245

Protanomaly

17.9083, 2.6841, 1.8242

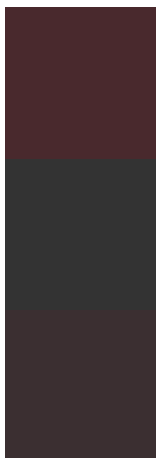
Deuteranomaly

17.8679, 3.5116, 3.1646

Tritanomaly

17.8443, 8.7374, 3.2311

Monochromacy



Original Color

17.8656, 8.8425, 2.9245

Achromatopsia

18.1947, -0.9708, 0.9886

Achromatomaly

17.8454, 2.5245, 1.3864

CSS Examples

Text

The CSS property to change the color of the text to HunterLab 17.8656, 8.8425, 2.9245 is called "color". The color property can be set on classes, ids or directly on the HTML element.

This example shows how text in the color `rgb(73, 41, 45)` looks like.

```
.text, #text, p{  
    color:rgb(73, 41, 45)  
}
```

If you want to add a text shadow in that color use the text-shadow property, you can generate a text shadow directly with our [CSS Text Shadow Generator](#).

Here you see how black text with a 4 pixel rgb(73, 41, 45) colored shadow looks like.

```
.shadow{ text-shadow: 4px 4px 2px rgb(73, 41, 45) }
```

Border

The CSS property to change the border of an element to HunterLab 17.8656, 8.8425, 2.9245 is called "border". The border property can be set on classes, ids or directly on the HTML element.

This example shows the color as border, it can be applied via the CSS property "border" or "border-color".

```
.border, #border, table{ border:4px solid rgb(73, 41, 45) }
```


If only the border color should be changed use the property border-color.

```
.border{ border-color:rgb(73, 41, 45) }
```

If you want to add a box shadow in that color use:

Here you see how a box with a 4 pixel rgb(73, 41, 45) colored shadow looks like.

```
.boxshadow{ -moz-box-shadow:4px 4px 4px  
4px rgb(73, 41, 45); -webkit-box-  
shadow:4px 4px 4px 4px rgb(73, 41, 45);  
box-shadow:4px 4px 4px 4px rgb(73, 41, 45)  
}
```

Background

The CSS property to change the background color of an element to HunterLab 17.8656, 8.8425, 2.9245 is called "background". The background property can be set on classes, ids or directly on the HTML element.

```
.background, #background, body{  
background: rgb(73, 41, 45) }
```

If only the background color should be changed can be used:

```
.background{ background-color: rgb(73, 41,  
45) }
```

This example shows the color as background, it is applied via the CSS property "background".

To optimize and compress your CSS code, you can use our [online CSS compressor and optimizer](#) based on csstidy. If you want to create a linear or radial gradient as background or border, check our [CSS Gradient Generator](#).

Hey! You found this booklet interesting? Support Converting Colors with the new Membership Option!

The pro membership hides all ads, plus gives you double the colors in the color bucket, and more awesome pro features!

[Learn more, Memberships starting at \\$2.50/m!](#)

**Follow me
on Twitter!**

@ConvertingColor