

Converting Colors

HunterLab(17.8777, 12.0377,
7.7880)

Have a look what the booklet for
HunterLab(17.8777, 12.0377,
7.7880) contains.

HunterLab(17.8777, 12.0377, 7.7880)	3
<i>Conversions</i>	4
<i>Details</i>	6
<i>Harmonies</i>	12
<i>Previews</i>	24
<i>Color Blindness Simulation</i>	28
<i>CSS Examples</i>	31

Color

**HunterLab(17.8777, 12.0377,
7.7880)**

Conversions

Conversions Part 1

Format	Color
Hex	52251B
RGB	82, 37, 27
RGB Percent	32%, 15%, 11%
CMY	0.6784, 0.8549, 0.8941
CMYK	0.00, 0.55, 0.67, 0.68
HSL	11°, 50%, 21%
HSV	11°, 67%, 32%
XYZ	4.3391, 3.1961, 1.4251
YIQ	49.3150, 30.0300, 6.4300

Conversions

Conversions Part 2

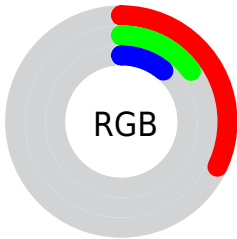
Format	Color
R_YB	82, 39, 27
Decimal	5383451
CIE _{Lab}	20.81, 20.02, 16.34
CIE _{LCh}	21, 25.841, 39.214
Yxy	3.1963, 0.4842, 0.3567
Android (android.graphics.Color)	4283573531 (0xFF52251B)
YUV	49.3150, -11.0013, 28.6647
Hunter-Lab	17.8777, 12.0377, 7.7880

Details

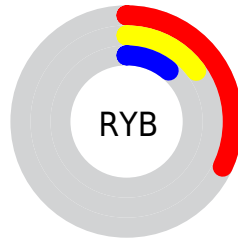
The HunterLab color **17.8777, 12.0377, 7.7880** is a dark color, and the websafe version is hex **663333**. A complement of this color would be **23.4022, -8.2151, -5.9476**, and the grayscale version is **17.6594, -0.9423, 0.9595**.

A 20% lighter version of the original color is **34.3214, 13.7395, 11.3795**, and **6.1243, 10.4880, 3.9574** is the 20% darker color. If you saturate the color by 10%, you get **16.6844, 14.3166, 8.3737**, and if you desaturate by 10%, it is **19.2259, 9.7685, 7.0659**.

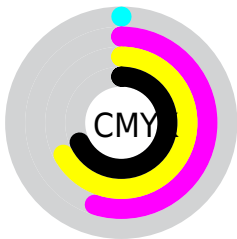
Distribution



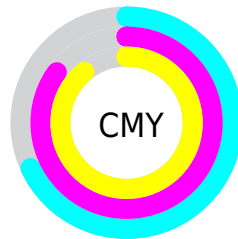
- Red (32%)
- Green (15%)
- Blue (11%)



- Red (32%)
- Yellow (15%)
- Blue (11%)



- Cyan (0%)
- Magenta (55%)
- Yellow (67%)
- Black (68%)



- Cyan (68%)
- Magenta (85%)
- Yellow (89%)

Brightness & Saturation Gradients

These gradients show how the HunterLab color 17.8777, 12.0377, 7.7880 changes by changing the brightness by 10 percent. The first figure shows a shift by +10% for each color and the second figure -10%.

Similar to the brightness gradients but the following saturation gradients show a change of the HunterLab color 17.8777, 12.0377, 7.7880 by changing the saturation by 10% instead.

■ 17.8777, 12.0377,
7.7880

■ 17.8777, 12.0377,
7.7880

■ 114.3039, 15.9951,
21.5579

■ 11.1133, 11.0009,
6.9190

■ 34.2760, 13.6308,
11.1934

■ 3.0009, 28.9122,
2.1007

■ 43.7128, 14.2336,
12.7636

0.0000, NaN, NaN

■ 53.8852, 14.7303,
14.2841

0.0000, NaN, NaN

■ 64.7431, 15.1340,
15.7707

0.0000, NaN, NaN

■ 76.2459, 15.4549,
17.2347

0.0000, NaN, NaN

■ 88.3593, 15.7011,

0.0000, NaN, NaN

18.6837

0.0000, NaN, NaN

101.0537, 15.8793,
20.1233

17.8777, 12.0377,
7.7880

17.8777, 12.0377,
7.7880

16.6844, 14.3166,
8.3737

19.2259, 9.7685,
7.0659

15.6633, 16.5317,
8.7880

20.7088, 7.5621,
6.2387

14.8195, 18.5280,
9.1803

22.3097, 5.4441,
5.3332

14.6049, 19.0426,
9.3328

24.0136, 3.4256,
4.3701

25.8074, 1.5075,
3.3644

■ 27.6803, -0.3148,
2.3269

■ 29.6231, -2.0491,
1.2652

■ 31.6282, -3.7040,
0.1846

■ 33.6892, -5.2886,
-0.9114

Harmonies

Analogous

The Analogous color harmony consists of three colors that are next to each other on the color wheel.



17.8782, 16.1504, 3.0864



17.8777, 12.0377, 7.7880



17.8782, 4.6139, 9.7960

Triad

The Triadic color harmony groups three colors that are evenly spaced from another and form a triangle on the color wheel.



17.8782, 12.0365, 7.7883



17.8782, -12.8070, 5.2879



17.8782, 1.4803, -19.2833

Complementary

The Complementary color scheme is a pair of colors which are on the opposite of each other on the color wheel.



17.8777, 12.0377, 7.7880



23.4022, -8.2151, -5.9476

Split Complementary

Split-complementary colors differ from the complementary color scheme. The scheme consists of three colors, the original color and two neighbors of the complement color.



17.8782, -5.9158, -17.8592



17.8777, 12.0377, 7.7880



17.8782, -13.3573, -1.4343

Square

The Square scheme is like the rectangle color scheme, but the four colors are evenly spaced on the color wheel.



17.8782, 12.0365, 7.7883



17.8782, -9.3922, 8.8123



17.8782, -11.0488, -10.4299



17.8782, 9.4116, -13.7567

Rectangle

The Rectangle color scheme consists of four colors that form a rectangle on the color wheel.



17.8777, 12.0377, 7.7880



17.8782, -0.7511, 10.1854



17.8782, -11.0488, -10.4299



17.8782, -1.1578, -19.6394

Sweetspot

The Sweet Spot groups the original color and five complimentary colors.



17.8782, 12.0365, 7.7883



33.2260, 2.8986, 4.9343



17.4830, 21.1555, -10.1350



16.3101, 1.6350, 2.5529



67.9972, -3.6282, 3.6944



19.0543, -1.0167, 1.0353

Same Dimension

The Same Dimension uses a secret algorithm to generate beautiful new colors.



17.8782, 12.0365, 7.7883



21.2390, 20.6228, 11.4104



23.4570, 0.7439, 11.8461



13.9686, -0.0111, 1.2756



18.5534, 25.3153, 11.8757



43.3986, 64.4305, 27.8700

Inverse Universe

The Inverse Universe completely reimagines the original color for something new.



23.4022, -8.2151, -5.9476



29.6627, -11.2131, -9.7767



16.5667, 2.5366, -18.3159



14.3818, -1.4565, 0.2633



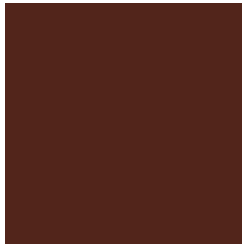
27.5544, -10.5332, -11.7024



65.2615, -24.0751, -29.5999

Previews

White Background



This preview shows how the HunterLab color 17.8777, 12.0377, 7.7880 looks on a white background.

Color Contrast Check

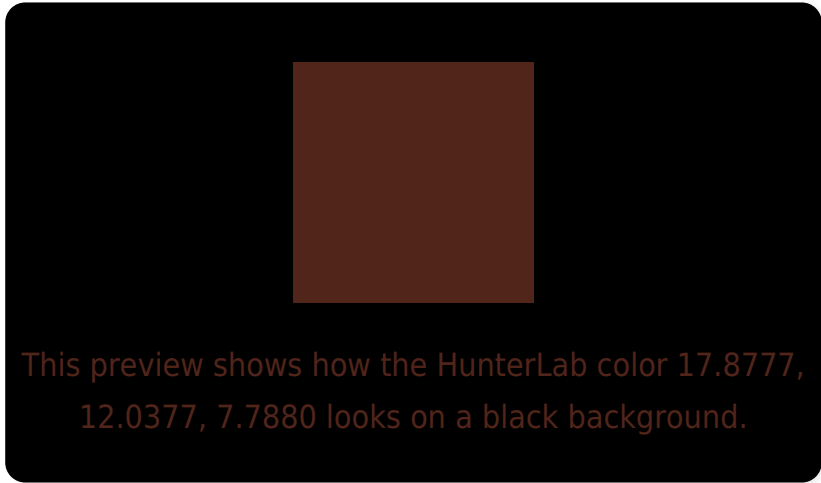
Large Text (above 18pt) WCAG AA ✓ Pass

Any Text WCAG AA ✓ Pass

Large Text (above 18pt) WCAG AAA ✓ Pass

Any Text WCAG AAA ✓ Pass

Black Background



Color Contrast Check

Large Text (above 18pt) WCAG AA × Fail

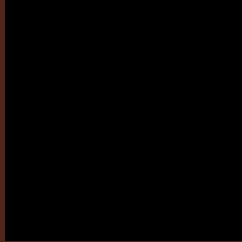
Any Text WCAG AA × Fail

Large Text (above 18pt) WCAG AAA × Fail

Any Text WCAG AAA × Fail

If you want to check with other color combinations, try the [Color Contrast Checker](#).

HunterLab 17.8777, 12.0377, 7.7880 Background



This preview shows how black text looks on a background with the HunterLab color 17.8777, 12.0377, 7.7880.

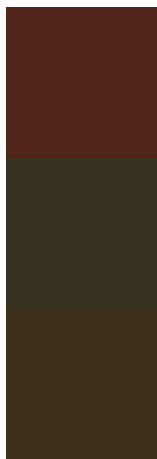


This preview shows how white text looks on a background with the HunterLab color 17.8777, 12.0377,

Color Blindness Simulation

Color vision deficiency is a very complex topic, and I could not describe the different causes any better than Wikipedia does, so if you want to learn more, you should check out their [article about color blindness](#).

Dichromacy



Original Color

17.8777, 12.0377, 7.7880

Protanopia

18.2008, -1.6899, 6.7342

Deuteranopia

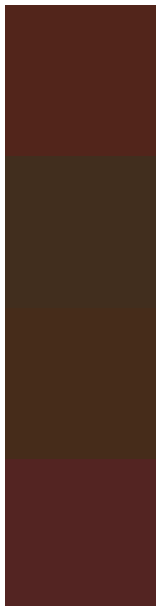
18.0024, 1.0412, 8.0822



Tritanopia

18.0019, 13.5929, 5.2912

Trichromacy



Original Color

17.8777, 12.0377, 7.7880

Protanomaly

17.8088, 2.8261, 6.9339

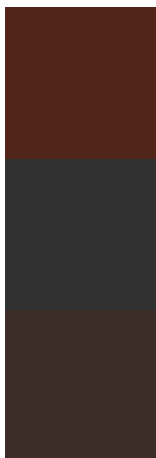
Deuteranomaly

17.8270, 4.9784, 7.8218

Tritanomaly

17.9339, 13.2747, 6.2799

Monochromacy



Original Color

17.8777, 12.0377, 7.7880

Achromatopsia

17.5253, -0.9351, 0.9522

Achromatomaly

17.4039, 3.0104, 3.6303

CSS Examples

Text

The CSS property to change the color of the text to HunterLab 17.8777, 12.0377, 7.7880 is called "color". The color property can be set on classes, ids or directly on the HTML element.

This example shows how text in the color `rgb(82, 37, 27)` looks like.

```
.text, #text, p{  
    color:rgb(82, 37, 27)  
}
```

If you want to add a text shadow in that color use the text-shadow property, you can generate a text shadow directly with our [CSS Text Shadow Generator](#).

Here you see how black text with a 4 pixel rgb(82, 37, 27) colored shadow looks like.

```
.shadow{ text-shadow: 4px 4px 2px rgb(82, 37, 27) }
```

Border

The CSS property to change the border of an element to HunterLab 17.8777, 12.0377, 7.7880 is called "border". The border property can be set on classes, ids or directly on the HTML element.

This example shows the color as border, it can be applied via the CSS property "border" or "border-color".

```
.border, #border, table{ border:4px solid rgb(82, 37, 27) }
```


If only the border color should be changed use the property border-color.

```
.border{ border-color:rgb(82, 37, 27) }
```

If you want to add a box shadow in that color use:

Here you see how a box with a 4 pixel rgb(82, 37, 27) colored shadow looks like.

```
.boxshadow{ -moz-box-shadow:4px 4px 4px  
4px rgb(82, 37, 27); -webkit-box-  
shadow:4px 4px 4px 4px rgb(82, 37, 27);  
box-shadow:4px 4px 4px 4px rgb(82, 37, 27)  
}
```

Background

The CSS property to change the background color of an element to HunterLab 17.8777, 12.0377, 7.7880 is called "background". The background property can be set on classes, ids or directly on the HTML element.

```
.background, #background, body{  
background: rgb(82, 37, 27) }
```

If only the background color should be changed can be used:

```
.background{ background-color: rgb(82, 37,  
27) }
```

This example shows the color as background, it is applied via the CSS property "background".

To optimize and compress your CSS code, you can use our [online CSS compressor and optimizer](#) based on csstidy. If you want to create a linear or radial gradient as background or border, check our [CSS Gradient Generator](#).

Hey! You found this booklet interesting? Support Converting Colors with the new Membership Option!

The pro membership hides all ads, plus gives you double the colors in the color bucket, and more awesome pro features!

[Learn more, Memberships starting at \\$2.50/m!](#)

**Follow me
on Twitter!**

@ConvertingColor