

Converting Colors

HunterLab(17.9227, 9.1498,
4.4840)

Have a look what the booklet for
HunterLab(17.9227, 9.1498, 4.4840)
contains.

HunterLab(17.9859, 8.9924, 4.6227)	3
<i>Conversions</i>	4
<i>Details</i>	6
<i>Harmonies</i>	12
<i>Previews</i>	24
<i>Color Blindness Simulation</i>	28
<i>CSS Examples</i>	31

Color

**HunterLab(17.9859, 8.9924,
4.6227)**

Conversions

Conversions Part 1

Format	Color
Hex	4B2928
RGB	75, 41, 40
RGB Percent	29%, 16%, 16%
CMY	0.7059, 0.8392, 0.8431
CMYK	0.00, 0.45, 0.47, 0.71
HSL	2°, 30%, 23%
HSV	2°, 47%, 29%
XYZ	4.0776, 3.2349, 2.4170
YIQ	51.0520, 20.5850, 6.8970

Conversions

Conversions Part 2

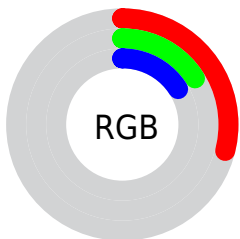
Format	Color
R_{YB}	75, 41, 40
Decimal	4925736
CIE Lab	20.96, 15.72, 7.52
CIE LCh	21, 17.424, 25.564
Yxy	3.2351, 0.4191, 0.3325
Android (android.graphics.Color)	4283115816 (0xFF4B2928)
YUV	51.0520, -5.4486, 21.0024
Hunter-Lab	17.9859, 8.9924, 4.6227

Details

The HunterLab color **17.9859, 8.9924, 4.6227** is a dark color, and the websafe version is hex **663333**. A complement of this color would be **24.2000, -8.4666, -1.5450**, and the grayscale version is **18.2254, -0.9725, 0.9902**.

A 20% lighter version of the original color is **34.3980, 9.8860, 6.5554**, and **5.5414, 9.4899, 3.5807** is the 20% darker color. If you saturate the color by 10%, you get **16.5252, 11.4055, 5.3508**, and if you desaturate by 10%, it is **19.6027, 6.6139, 3.8998**.

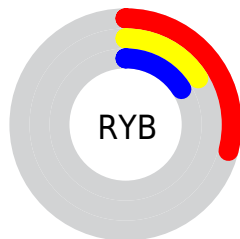
Distribution



Red (29%)

Green (16%)

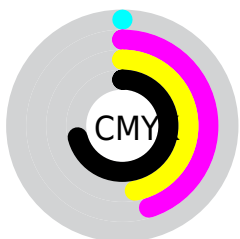
Blue (16%)



Red (29%)

Yellow (16%)

Blue (16%)

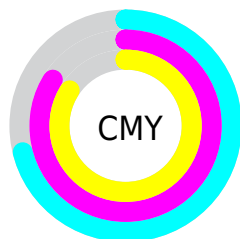


Cyan (0%)

Magenta (45%)

Yellow (47%)

Black (71%)



Cyan (71%)

Magenta (84%)

Yellow (84%)

Brightness & Saturation Gradients

These gradients show how the HunterLab color 17.9859, 8.9924, 4.6227 changes by changing the brightness by 10 percent. The first figure shows a shift by +10% for each color and the second figure -10%.

Similar to the brightness gradients but the following saturation gradients show a change of the HunterLab color 17.9859, 8.9924, 4.6227 by changing the saturation by 10% instead.

■ 17.9859, 8.9924,
4.6227

■ 17.9859, 8.9924,
4.6227

■ 114.5045, 11.1087,
13.5911

■ 11.2056, 8.2056,
3.6339

■ 34.4103, 10.1073,
6.5943

■ 3.2631, 20.8151,
2.2842

■ 43.8585, 10.4880,
7.5666

0.0000, NaN, NaN

■ 54.0413, 10.7735,
8.5423

0.0000, NaN, NaN

■ 64.9092, 10.9757,
9.5262

0.0000, NaN, NaN

■ 76.4213, 11.1037,
10.5214

0.0000, NaN, NaN

■ 88.5434, 11.1647,

0.0000, NaN, NaN

11.5298

0.0000, NaN, NaN

101.2463, 11.1648,
12.5527

17.9859, 8.9924,
4.6227

17.9859, 8.9924,
4.6227

16.5252, 11.4055,
5.3508

19.6027, 6.6139,
3.8998

15.2450, 13.7884,
6.0584

21.3513, 4.3086,
3.1952

14.1726, 16.0318,
6.7084

23.2131, 2.0898,
2.5153

13.3318, 17.9911,
7.2528

25.1720, -0.0412,
1.8622

12.6517, 19.6919,
7.8042

27.2152, -2.0895,
1.2348

■ 12.4196, 20.3043,
8.0084

■ 29.3322, -4.0633,
0.6312

■ 31.5142, -5.9718,
0.0487

■ 33.7544, -7.8238,
-0.5152

■ 36.0469, -9.6275,
-1.0632

Harmonies

Analogous

The Analogous color harmony consists of three colors that are next to each other on the color wheel.



17.9863, 10.1491, 0.2267



17.9859, 8.9924, 4.6227



17.9863, 5.0583, 7.1959

Triad

The Triadic color harmony groups three colors that are evenly spaced from another and form a triangle on the color wheel.



17.9863, 8.9914, 4.6230



17.9863, -8.4956, 5.5750



17.9863, -1.7285, -11.3400

Complementary

The Complementary color scheme is a pair of colors which are on the opposite of each other on the color wheel.



17.9859, 8.9924, 4.6227



24.2000, -8.4666, -1.5450

Split Complementary

Split-complementary colors differ from the complementary color scheme. The scheme consists of three colors, the original color and two neighbors of the complement color.



17.9863, -6.2793, -8.7804



17.9859, 8.9924, 4.6227



17.9863, -9.8937, 1.7002

Square

The Square scheme is like the rectangle color scheme, but the four colors are evenly spaced on the color wheel.



17.9863, 8.9914, 4.6230



17.9863, -5.0803, 7.6258



17.9863, -9.1307, -3.6347



17.9863, 3.5667, -9.9059

Rectangle

The Rectangle color scheme consists of four colors that form a rectangle on the color wheel.



17.9859, 8.9924, 4.6227



17.9863, 1.6040, 7.9758



17.9863, -9.1307, -3.6347



17.9863, -3.3892, -10.9019

Sweetspot

The Sweet Spot groups the original color and five complimentary colors.



17.9863, 8.9914, 4.6230



30.7624, 2.1151, 3.0893



18.7443, 13.9601, -8.9313



15.3039, 1.2220, 1.6002



65.8695, -3.5146, 3.5788



17.3419, -0.9253, 0.9422

Same Dimension

The Same Dimension uses a secret algorithm to generate beautiful new colors.



17.9863, 8.9914, 4.6230



21.2678, 15.2902, 7.0985



21.6416, 1.7335, 7.8660



13.0754, 0.2018, 1.0515



16.9946, 28.1451, 10.9647



41.0890, 69.4739, 26.5351

Inverse Universe

The Inverse Universe completely reimagines the original color for something new.



24.2000, -8.4666, -1.5450



31.0063, -12.4801, -2.6913



19.6905, -1.7862, -7.9418



13.7264, -1.5851, 0.4181



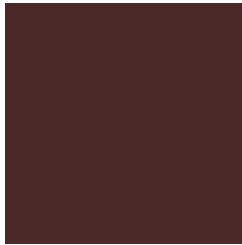
31.4612, -16.0924, -4.5848



76.4347, -38.9896, -11.3695

Previews

White Background



This preview shows how the HunterLab color 17.9859, 8.9924, 4.6227 looks on a white background.

Color Contrast Check

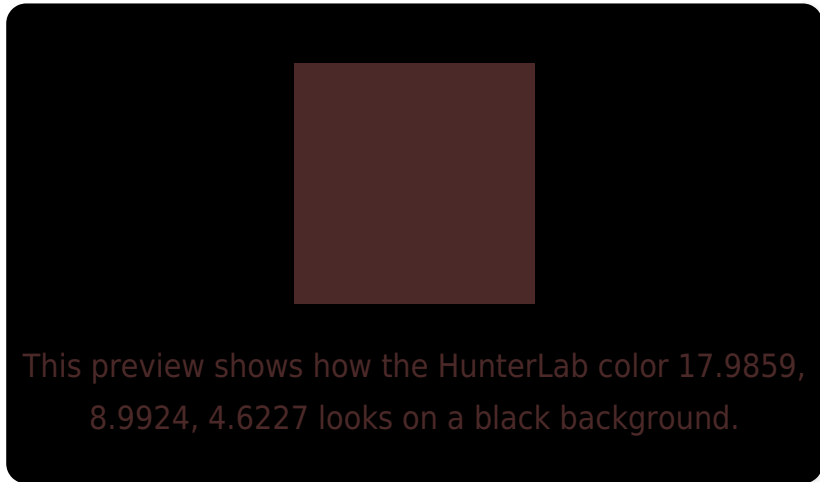
Large Text (above 18pt) WCAG AA ✓ Pass

Any Text WCAG AA ✓ Pass

Large Text (above 18pt) WCAG AAA ✓ Pass

Any Text WCAG AAA ✓ Pass

Black Background



Color Contrast Check

Large Text (above 18pt) WCAG AA × Fail

Any Text WCAG AA × Fail

Large Text (above 18pt) WCAG AAA × Fail

Any Text WCAG AAA × Fail

If you want to check with other color combinations, try the [Color Contrast Checker](#).

HunterLab 17.9859, 8.9924, 4.6227 Background



This preview shows how black text looks on a background with the HunterLab color 17.9859, 8.9924, 4.6227.



This preview shows how white text looks on a background with the HunterLab color 17.9859, 8.9924,

Color Blindness Simulation

Color vision deficiency is a very complex topic, and I could not describe the different causes any better than Wikipedia does, so if you want to learn more, you should check out their [article about color blindness](#).

Dichromacy



Original Color

17.9859, 8.9924, 4.6227

Protanopia

18.2044, -1.2094, 3.1106

Deuteranopia

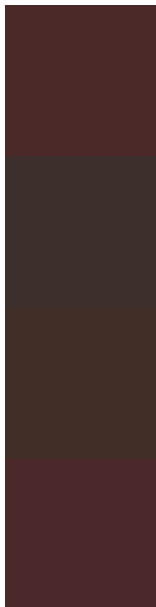
18.1763, 0.8741, 4.9543



Tritanopia

17.8546, 9.7089, 3.5824

Trichromacy



Original Color

17.9859, 8.9924, 4.6227

Protanomaly

17.8873, 2.3972, 3.4884

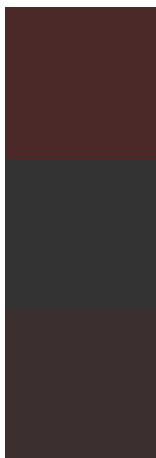
Deuteranomaly

17.9563, 3.5996, 4.7898

Tritanomaly

17.8343, 9.6097, 3.8753

Monochromacy



Original Color

17.9859, 8.9924, 4.6227

Achromatopsia

18.1947, -0.9708, 0.9886

Achromatomaly

17.8855, 2.5637, 2.1508

CSS Examples

Text

The CSS property to change the color of the text to HunterLab 17.9859, 8.9924, 4.6227 is called "color". The color property can be set on classes, ids or directly on the HTML element.

This example shows how text in the color `rgb(75, 41, 40)` looks like.

```
.text, #text, p{  
    color:rgb(75, 41, 40)  
}
```

If you want to add a text shadow in that color use the text-shadow property, you can generate a text shadow directly with our [CSS Text Shadow Generator](#).

Here you see how black text with a 4 pixel rgb(75, 41, 40) colored shadow looks like.

```
.shadow{ text-shadow: 4px 4px 2px rgb(75, 41, 40) }
```

Border

The CSS property to change the border of an element to HunterLab 17.9859, 8.9924, 4.6227 is called "border". The border property can be set on classes, ids or directly on the HTML element.

This example shows the color as border, it can be applied via the CSS property "border" or "border-color".

```
.border, #border, table{ border:4px solid rgb(75, 41, 40) }
```


If only the border color should be changed use the property `border-color`.

```
.border{ border-color:rgb(75, 41, 40) }
```

If you want to add a box shadow in that color use:

Here you see how a box with a 4 pixel `rgb(75, 41, 40)` colored shadow looks like.

```
.boxshadow{ -moz-box-shadow:4px 4px 4px  
4px rgb(75, 41, 40); -webkit-box-  
shadow:4px 4px 4px 4px rgb(75, 41, 40);  
box-shadow:4px 4px 4px 4px rgb(75, 41, 40)  
}
```

Background

The CSS property to change the background color of an element to HunterLab 17.9859, 8.9924, 4.6227 is called "background". The background property can be set on classes, ids or directly on the HTML element.

```
.background, #background, body{  
background: rgb(75, 41, 40) }
```

If only the background color should be changed can be used:

```
.background{ background-color: rgb(75, 41,  
40) }
```

This example shows the color as background, it is applied via the CSS property "background".

To optimize and compress your CSS code, you can use our [online CSS compressor and optimizer](#) based on csstidy. If you want to create a linear or radial gradient as background or border, check our [CSS Gradient Generator](#).

Hey! You found this booklet interesting? Support Converting Colors with the new Membership Option!

The pro membership hides all ads, plus gives you double the colors in the color bucket, and more awesome pro features!

[Learn more, Memberships starting at \\$2.50/m!](#)

**Follow me
on Twitter!**

@ConvertingColor