

# Converting Colors

HunterLab(17.9646, 8.8507,  
4.2643)

Have a look what the booklet for  
HunterLab(17.9646, 8.8507, 4.2643)  
contains.

<b>HunterLab(17.8936, 8.7604, 4.2283)</b> .....	3
<i><b>Conversions</b></i> .....	4
<i><b>Details</b></i> .....	6
<i><b>Harmonies</b></i> .....	12
<i><b>Previews</b></i> .....	24
<i><b>Color Blindness Simulation</b></i> .....	28
<i><b>CSS Examples</b></i> .....	31

# Color

**HunterLab(17.8936, 8.7604,  
4.2283)**

# Conversions

## Conversions Part 1

Format	Color
Hex	4A2929
RGB	74, 41, 41
RGB Percent	29%, 16%, 16%
CMY	0.7098, 0.8392, 0.8392
CMYK	0.00, 0.45, 0.45, 0.71
HSL	0°, 29%, 23%
HSV	0°, 45%, 29%
XYZ	4.0172, 3.2018, 2.5041
YIQ	50.8670, 19.6680, 6.9960

# Conversions

## Conversions Part 2

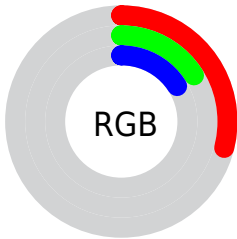
<b>Format</b>	<b>Color</b>
<b>RYB</b>	74, 41, 41
Decimal	4860201
CIELab	20.84, 15.40, 6.63
CIELCh	21, 16.763, 23.308
Yxy	3.2020, 0.4132, 0.3293
Android (android.graphics.Color)	4283050281 (0xFF4A2929)
YUV	50.8670, -4.8644, 20.2876
Hunter-Lab	17.8936, 8.7604, 4.2283

# Details

The HunterLab color **17.8936, 8.7604, 4.2283** is a dark color, and the websafe version is hex **663333**. A complement of this color would be **24.2139, -8.4704, -1.0912**, and the grayscale version is **18.1616, -0.9691, 0.9868**.

A 20% lighter version of the original color is **34.3123, 9.6635, 6.0992**, and **5.3973, 9.2430, 3.4876** is the 20% darker color. If you saturate the color by 10%, you get **16.4028, 11.2089, 4.9419**, and if you desaturate by 10%, it is **19.5435, 6.3451, 3.5384**.

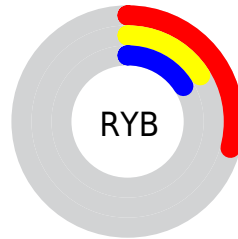
# Distribution



Red (29%)

Green (16%)

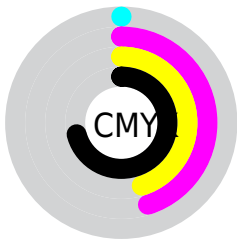
Blue (16%)



Red (29%)

Yellow (16%)

Blue (16%)

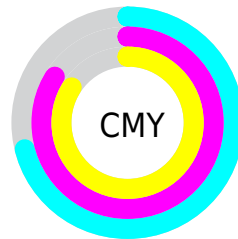


Cyan (0%)

Magenta (45%)

Yellow (45%)

Black (71%)



Cyan (71%)

Magenta (84%)

Yellow (84%)

# Brightness & Saturation Gradients

These gradients show how the HunterLab color 17.8936, 8.7604, 4.2283 changes by changing the brightness by 10 percent. The first figure shows a shift by +10% for each color and the second figure -10%.

Similar to the brightness gradients but the following saturation gradients show a change of the HunterLab color 17.8936, 8.7604, 4.2283 by changing the saturation by 10% instead.



■ 17.8936, 8.7604,  
4.2283

■ 17.8936, 8.7604,  
4.2283

■ 114.3334, 10.7465,  
12.7381

■ 11.1268, 7.9912,  
3.3003

■ 34.2957, 9.8418,  
6.0653

■ 3.0409, 21.8989,  
2.1286

■ 43.7342, 10.2069,  
6.9808

0.0000, NaN, NaN

0.0000, NaN, NaN

■ 53.9081, 10.4775,  
7.9045

0.0000, NaN, NaN

■ 64.7675, 10.6653,  
8.8401

0.0000, NaN, NaN

■ 76.2717, 10.7796,  
9.7901

0.0000, NaN, NaN

0.0000, NaN, NaN

■ 88.3863, 10.8275,

101.0820, 10.8149,  
11.7384

17.8936, 8.7604,  
4.2283

17.8936, 8.7604,  
4.2283

16.4028, 11.2089,  
4.9419

19.5435, 6.3451,  
3.5384

15.0968, 13.6231,  
5.6568

21.3273, 4.0021,  
2.8819

14.0047, 15.8888,  
6.3372

23.2256, 1.7446,  
2.2622

13.1517, 17.8531,  
6.9338

25.2220, -0.4264,  
1.6786

12.4561, 19.6082,  
7.4719

27.3032, -2.5166,  
1.1282

■ 12.0662, 20.6617,  
7.7969

■ 29.4587, -4.5342,  
0.6074

■ 31.6798, -6.4886,  
0.1125

■ 33.9592, -8.3888,  
-0.3599

■ 36.2913, -10.2429,  
-0.8131

# Harmonies

## Analogous

The Analogous color harmony consists of three colors that are next to each other on the color wheel.



17.8940, 9.6312, -0.1250



17.8936, 8.7604, 4.2283



17.8940, 5.1600, 6.8660

# Triad

The Triadic color harmony groups three colors that are evenly spaced from another and form a triangle on the color wheel.



17.8940, 8.7595, 4.2286



17.8940, -8.0321, 5.6230



17.8940, -2.0625, -10.7009

# Complementary

The Complementary color scheme is a pair of colors which are on the opposite of each other on the color wheel.



17.8936, 8.7604, 4.2283



24.2139, -8.4704, -1.0912

# Split Complementary

Split-complementary colors differ from the complementary color scheme. The scheme consists of three colors, the original color and two neighbors of the complement color.



17.8940, -6.3465, -8.0230



17.8936, 8.7604, 4.2283



17.8940, -9.5397, 2.0075

# Square

The Square scheme is like the rectangle color scheme, but the four colors are evenly spaced on the color wheel.



17.8940, 8.7595, 4.2286



17.8940, -4.6039, 7.5030



17.8940, -8.9583, -3.0366



17.8940, 3.0103, -9.6279



# Rectangle

The Rectangle color scheme consists of four colors that form a rectangle on the color wheel.



17.8936, 8.7604, 4.2283



17.8940, 1.8908, 7.7074



17.8940, -8.9583, -3.0366



17.8940, -3.6347, -10.1900

# Sweetspot

The Sweet Spot groups the original color and five complimentary colors.



17.8940, 8.7595, 4.2286



30.9332, 1.9860, 2.8998



18.8046, 13.1583, -8.6088



15.3703, 1.1804, 1.5058



65.8695, -3.5146, 3.5788



17.3419, -0.9253, 0.9422



# Same Dimension

The Same Dimension uses a secret algorithm to generate beautiful new colors.



17.8940, 8.7595, 4.2286



21.3700, 15.2834, 6.6664



21.4287, 1.7526, 7.4305



13.0511, 0.2438, 1.0243



16.8075, 28.7813, 10.8606



40.9154, 70.0669, 26.4385



# Inverse Universe

The Inverse Universe completely reimagines the original color for something new.



24.2139, -8.4704, -1.0912



31.5275, -12.8136, -2.0193



19.8539, -2.0321, -7.1487



13.7520, -1.6260, 0.4481



32.3432, -17.1456, -3.4138

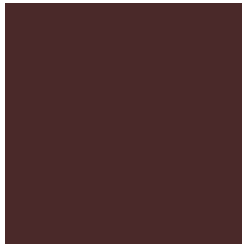


78.7357, -41.7387, -8.3110



# Previews

## White Background



This preview shows how the HunterLab color 17.8936, 8.7604, 4.2283 looks on a white background.

## Color Contrast Check

Large Text (above 18pt) WCAG AA ✓ Pass

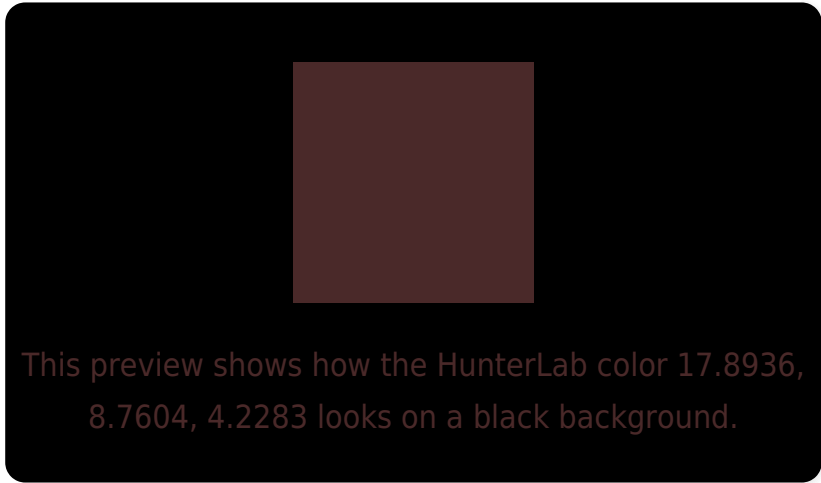
Any Text WCAG AA ✓ Pass

Large Text (above 18pt) WCAG AAA ✓ Pass

Any Text WCAG AAA ✓ Pass



# Black Background



## Color Contrast Check

Large Text (above 18pt) WCAG AA × Fail

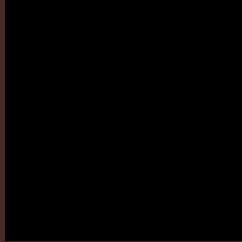
Any Text WCAG AA × Fail

Large Text (above 18pt) WCAG AAA × Fail

Any Text WCAG AAA × Fail

If you want to check with other color combinations, try the [Color Contrast Checker](#).

# HunterLab 17.8936, 8.7604, 4.2283 Background



This preview shows how black text looks on a background with the HunterLab color 17.8936, 8.7604, 4.2283.



This preview shows how white text looks on a background with the HunterLab color 17.8936, 8.7604,



# Color Blindness Simulation

Color vision deficiency is a very complex topic, and I could not describe the different causes any better than Wikipedia does, so if you want to learn more, you should check out their [article about color blindness](#).

## Dichromacy



### Original Color

17.8936, 8.7604, 4.2283

### Protanopia

17.9871, -0.6943, 2.5513

### Deuteranopia

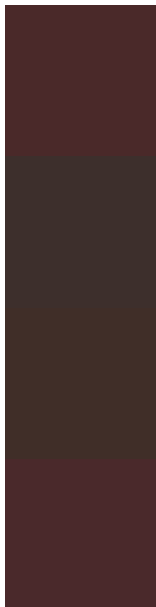
18.1098, 0.6862, 4.5988



## Tritanopia

17.9543, 9.0594, 3.3531

# Trichromacy



## Original Color

17.8936, 8.7604, 4.2283

## Protanomaly

17.9080, 2.5069, 3.1895

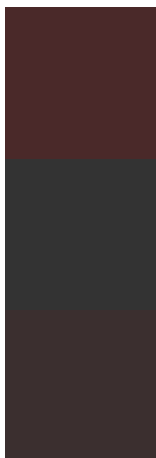
## Deuteranomaly

17.8807, 3.3928, 4.4208

## Tritanomaly

17.9336, 8.9575, 3.6514

# Monochromacy



## Original Color

17.8936, 8.7604, 4.2283

## Achromatopsia

18.1947, -0.9708, 0.9886

## Achromatomaly

17.7991, 2.2793, 2.0493

# CSS Examples

## Text

The CSS property to change the color of the text to HunterLab 17.8936, 8.7604, 4.2283 is called "color". The color property can be set on classes, ids or directly on the HTML element.

This example shows how text in the color `rgb(74, 41, 41)` looks like.

```
.text, #text, p{  
    color:rgb(74, 41, 41)  
}
```

If you want to add a text shadow in that color use the text-shadow property, you can generate a text shadow directly with our [CSS Text Shadow Generator](#).

Here you see how black text with a 4 pixel rgb(74, 41, 41) colored shadow looks like.

```
.shadow{ text-shadow: 4px 4px 2px rgb(74, 41, 41) }
```

## Border

The CSS property to change the border of an element to HunterLab 17.8936, 8.7604, 4.2283 is called "border".

The border property can be set on classes, ids or directly on the HTML element.

This example shows the color as border, it can be applied via the CSS property "border" or "border-color".

```
.border, #border, table{ border:4px solid rgb(74, 41, 41) }
```



If only the border color should be changed use the property border-color.

```
.border{ border-color:rgb(74, 41, 41) }
```

If you want to add a box shadow in that color use:

Here you see how a box with a 4 pixel rgb(74, 41, 41) colored shadow looks like.

```
.boxshadow{ -moz-box-shadow:4px 4px 4px  
4px rgb(74, 41, 41); -webkit-box-  
shadow:4px 4px 4px 4px rgb(74, 41, 41);  
box-shadow:4px 4px 4px 4px rgb(74, 41, 41)  
}
```

# Background

The CSS property to change the background color of an element to HunterLab 17.8936, 8.7604, 4.2283 is called "background". The background property can be set on classes, ids or directly on the HTML element.

```
.background, #background, body{  
background: rgb(74, 41, 41) }
```

If only the background color should be changed can be used:

```
.background{ background-color: rgb(74, 41,  
41) }
```

This example shows the color as background, it is applied via the CSS property "background".

To optimize and compress your CSS code, you can use our [online CSS compressor and optimizer](#) based on csstidy. If you want to create a linear or radial gradient as background or border, check our [CSS Gradient Generator](#).

Hey! You found this booklet interesting? Support Converting Colors with the new Membership Option!

The pro membership hides all ads, plus gives you double the colors in the color bucket, and more awesome pro features!

**[Learn more, Memberships starting at \\$2.50/m!](#)**

**Follow me  
on Twitter!**

@ConvertingColor