

Converting Colors

HunterLab(17.9734, 11.1560,
4.6361)

Have a look what the booklet for
HunterLab(17.9734, 11.1560,
4.6361) contains.

HunterLab(18.0735, 11.1654, 4.7467)	3
<i>Conversions</i>	4
<i>Details</i>	6
<i>Harmonies</i>	12
<i>Previews</i>	24
<i>Color Blindness Simulation</i>	28
<i>CSS Examples</i>	31

Color

**HunterLab(18.0735, 11.1654,
4.7467)**

Conversions

Conversions Part 1

Format	Color
Hex	4F2728
RGB	79, 39, 40
RGB Percent	31%, 15%, 16%
CMY	0.6902, 0.8470, 0.8431
CMYK	0.00, 0.51, 0.49, 0.69
HSL	359°, 34%, 23%
HSV	359°, 51%, 31%
XYZ	4.3330, 3.2665, 2.4096
YIQ	51.0740, 23.5190, 8.7910

Conversions

Conversions Part 2

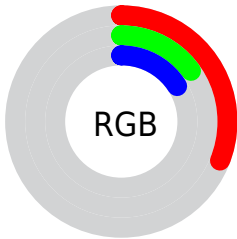
Format	Color
R_{YB}	79, 39, 40
Decimal	5187368
CIE _{Lab}	21.08, 18.78, 7.78
CIE _{LCh}	21, 20.330, 22.507
Yxy	3.2667, 0.4329, 0.3264
Android (android.graphics.Color)	4283377448 (0xFF4F2728)
YUV	51.0740, -5.4595, 24.4911
Hunter-Lab	18.0735, 11.1654, 4.7467

Details

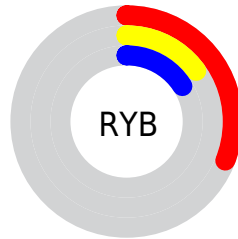
The HunterLab color **18.0735, 11.1654, 4.7467** is a dark color, and the websafe version is hex **663333**. A complement of this color would be **25.6387, -10.0014, -1.0456**, and the grayscale version is **18.2322, -0.9728, 0.9906**.

A 20% lighter version of the original color is **34.4945, 12.5680, 6.7032**, and **5.9777, 10.2369, 3.8626** is the 20% darker color. If you saturate the color by 10%, you get **16.5937, 13.7946, 5.5078**, and if you desaturate by 10%, it is **19.7446, 8.5201, 4.0148**.

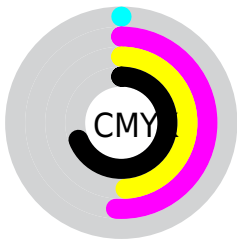
Distribution



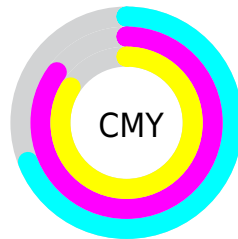
- Red (31%)
- Green (15%)
- Blue (16%)



- Red (31%)
- Yellow (15%)
- Blue (16%)



- Cyan (0%)
- Magenta (51%)
- Yellow (49%)
- Black (69%)



- Cyan (69%)
- Magenta (85%)
- Yellow (84%)

Brightness & Saturation Gradients

These gradients show how the HunterLab color 18.0735, 11.1654, 4.7467 changes by changing the brightness by 10 percent. The first figure shows a shift by +10% for each color and the second figure -10%.

Similar to the brightness gradients but the following saturation gradients show a change of the HunterLab color 18.0735, 11.1654, 4.7467 by changing the saturation by 10% instead.

■ 18.0735, 11.1654,
4.7467

■ 18.0735, 11.1654,
4.7467

■ 114.6668, 14.5808,
13.8525

■ 11.2805, 10.2014,
3.7351

■ 34.5191, 12.6178,
6.7584

■ 3.4606, 23.4647,
2.4224

■ 43.9764, 13.1551,
7.7476

0.0000, NaN, NaN

■ 54.1677, 13.5896,
8.7389

0.0000, NaN, NaN

■ 65.0435, 13.9339,
9.7373

0.0000, NaN, NaN

■ 76.5631, 14.1980,
10.7461

0.0000, NaN, NaN

■ 88.6924, 14.3897,

0.0000, NaN, NaN

11.7674

0.0000, NaN, NaN

101.4021, 14.5156,
12.8025

18.0735, 11.1654,
4.7467

18.0735, 11.1654,
4.7467

16.5937, 13.7946,
5.5078

19.7446, 8.5201,
4.0148

15.3349, 16.3024,
6.2668

21.5770, 5.9254,
3.3267

14.3271, 18.5327,
6.9765

23.5468, 3.4111,
2.6878

13.5761, 20.3557,
7.5695

25.6337, 0.9872,
2.0975

12.9096, 22.1416,
8.0825

27.8213, -1.3478,
1.5522

■ 30.0961, -3.6009,
1.0469

■ 32.4474, -5.7815,
0.5766

■ 34.8665, -7.8993,
0.1366

■ 37.3463, -9.9634,
-0.2775

Harmonies

Analogous

The Analogous color harmony consists of three colors that are next to each other on the color wheel.



18.0740, 12.1602, -0.5287



18.0735, 11.1654, 4.7467



18.0740, 6.7222, 7.7745

Triad

The Triadic color harmony groups three colors that are evenly spaced from another and form a triangle on the color wheel.



18.0740, 11.1643, 4.7470



18.0740, -9.3438, 6.5321



18.0740, -2.4661, -13.8968

Complementary

The Complementary color scheme is a pair of colors which are on the opposite of each other on the color wheel.



18.0735, 11.1654, 4.7467



25.6387, -10.0014, -1.0456

Split Complementary

Split-complementary colors differ from the complementary color scheme. The scheme consists of three colors, the original color and two neighbors of the complement color.



18.0740, -7.5502, -10.2632



18.0735, 11.1654, 4.7467



18.0740, -11.1649, 2.3760

Square

The Square scheme is like the rectangle color scheme, but the four colors are evenly spaced on the color wheel.



18.0740, 11.1643, 4.7470



18.0740, -5.2299, 8.5418



18.0740, -10.5546, -3.8167



18.0740, 3.7353, -12.6158

Rectangle

The Rectangle color scheme consists of four colors that form a rectangle on the color wheel.



18.0735, 11.1654, 4.7467



18.0740, 2.6880, 8.7057



18.0740, -10.5546, -3.8167



18.0740, -4.3498, -13.1773

Sweetspot

The Sweet Spot groups the original color and five complimentary colors.



18.0740, 11.1643, 4.7470



32.0658, 2.8198, 3.1036



19.0299, 15.9568, -11.0412



15.8572, 1.5807, 1.5914



66.9319, -3.5713, 3.6365



18.1947, -0.9708, 0.9886

Same Dimension

The Same Dimension uses a secret algorithm to generate beautiful new colors.



18.0740, 11.1643, 4.7470



21.1896, 18.8274, 7.4313



21.9124, 3.0931, 8.3622



13.0532, 0.2554, 0.9936



16.8237, 28.8442, 10.6141



40.9303, 70.1251, 26.2106

Inverse Universe

The Inverse Universe completely reimagines the original color for something new.



18.0740, 11.1643, 4.7470



21.1896, 18.8274, 7.4313



20.6465, -2.5735, -8.5649



13.0532, 0.2554, 0.9936



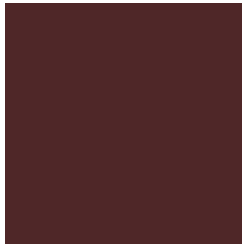
16.8237, 28.8442, 10.6141



40.9303, 70.1251, 26.2106

Previews

White Background



This preview shows how the HunterLab color 18.0735, 11.1654, 4.7467 looks on a white background.

Color Contrast Check

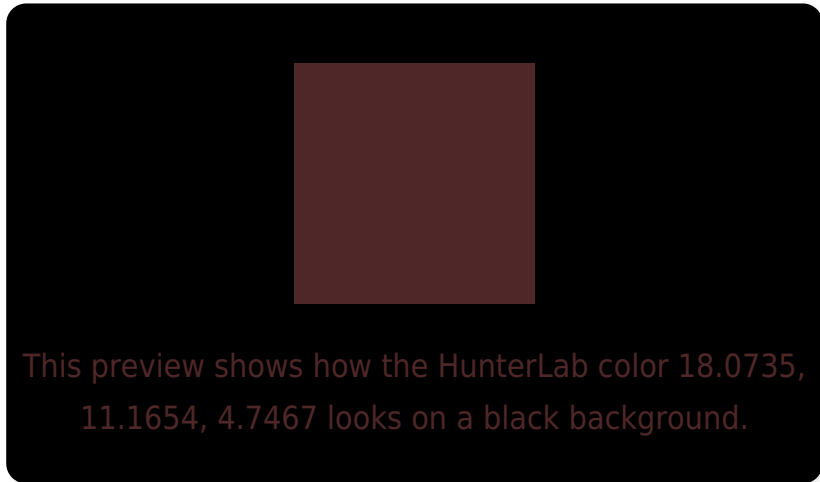
Large Text (above 18pt) WCAG AA ✓ Pass

Any Text WCAG AA ✓ Pass

Large Text (above 18pt) WCAG AAA ✓ Pass

Any Text WCAG AAA ✓ Pass

Black Background



Color Contrast Check

Large Text (above 18pt) WCAG AA × Fail

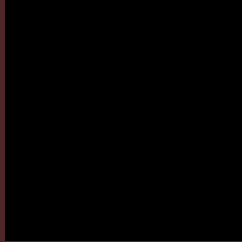
Any Text WCAG AA × Fail

Large Text (above 18pt) WCAG AAA × Fail

Any Text WCAG AAA × Fail

If you want to check with other color combinations, try the [Color Contrast Checker](#).

HunterLab 18.0735, 11.1654, 4.7467 Background



This preview shows how black text looks on a background with the HunterLab color 18.0735, 11.1654, 4.7467.



This preview shows how white text looks on a background with the HunterLab color 18.0735, 11.1654,

Color Blindness Simulation

Color vision deficiency is a very complex topic, and I could not describe the different causes any better than Wikipedia does, so if you want to learn more, you should check out their [article about color blindness](#).

Dichromacy



Original Color

18.0735, 11.1654, 4.7467

Protanopia

18.3008, -0.8312, 2.8883

Deuteranopia

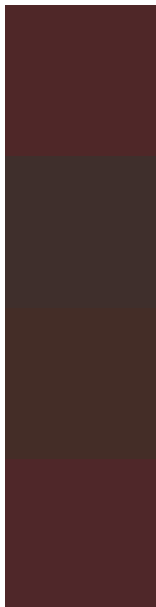
18.2446, 1.0687, 5.3019



Tritanopia

18.0925, 11.2570, 4.4710

Trichromacy



Original Color

18.0735, 11.1654, 4.7467

Protanomaly

18.0877, 3.0943, 3.3888

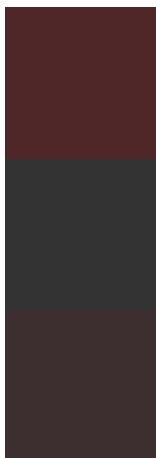
Deuteranomaly

18.0339, 4.9496, 4.8884

Tritanomaly

18.0925, 11.2570, 4.4710

Monochromacy



Original Color

18.0735, 11.1654, 4.7467

Achromatopsia

18.1947, -0.9708, 0.9886

Achromatomaly

17.9732, 2.8508, 2.2534

CSS Examples

Text

The CSS property to change the color of the text to HunterLab 18.0735, 11.1654, 4.7467 is called "color". The color property can be set on classes, ids or directly on the HTML element.

This example shows how text in the color `rgb(79, 39, 40)` looks like.

```
.text, #text, p{  
    color:rgb(79, 39, 40)  
}
```

If you want to add a text shadow in that color use the text-shadow property, you can generate a text shadow directly with our [CSS Text Shadow Generator](#).

Here you see how black text with a 4 pixel rgb(79, 39, 40) colored shadow looks like.

```
.shadow{ text-shadow: 4px 4px 2px rgb(79, 39, 40) }
```

Border

The CSS property to change the border of an element to HunterLab 18.0735, 11.1654, 4.7467 is called "border". The border property can be set on classes, ids or directly on the HTML element.

This example shows the color as border, it can be applied via the CSS property "border" or "border-color".

```
.border, #border, table{ border:4px solid rgb(79, 39, 40) }
```


If only the border color should be changed use the property `border-color`.

```
.border{ border-color:rgb(79, 39, 40) }
```

If you want to add a box shadow in that color use:

Here you see how a box with a 4 pixel `rgb(79, 39, 40)` colored shadow looks like.

```
.boxshadow{ -moz-box-shadow:4px 4px 4px  
4px rgb(79, 39, 40); -webkit-box-  
shadow:4px 4px 4px 4px rgb(79, 39, 40);  
box-shadow:4px 4px 4px 4px rgb(79, 39, 40)  
}
```

Background

The CSS property to change the background color of an element to HunterLab 18.0735, 11.1654, 4.7467 is called "background". The background property can be set on classes, ids or directly on the HTML element.

```
.background, #background, body{  
background: rgb(79, 39, 40) }
```

If only the background color should be changed can be used:

```
.background{ background-color: rgb(79, 39,  
40) }
```

This example shows the color as background, it is applied via the CSS property "background".

To optimize and compress your CSS code, you can use our [online CSS compressor and optimizer](#) based on csstidy. If you want to create a linear or radial gradient as background or border, check our [CSS Gradient Generator](#).

Hey! You found this booklet interesting? Support Converting Colors with the new Membership Option!

The pro membership hides all ads, plus gives you double the colors in the color bucket, and more awesome pro features!

[Learn more, Memberships starting at \\$2.50/m!](#)

**Follow me
on Twitter!**

@ConvertingColor