

Converting Colors

HunterLab(17.9973, 6.8907,
5.4445)

Have a look what the booklet for
HunterLab(17.9973, 6.8907, 5.4445)
contains.

HunterLab(17.9973, 6.8907, 5.4445)	3
<i>Conversions</i>	4
<i>Details</i>	6
<i>Harmonies</i>	12
<i>Previews</i>	24
<i>Color Blindness Simulation</i>	28
<i>CSS Examples</i>	31

Color

**HunterLab(17.9973, 6.8907,
5.4445)**

Conversions

Conversions Part 1

Format	Color
Hex	482B25
RGB	72, 43, 37
RGB Percent	28%, 17%, 15%
CMY	0.7176, 0.8314, 0.8549
CMYK	0.00, 0.40, 0.49, 0.72
HSL	10°, 32%, 21%
HSV	10°, 49%, 28%
XYZ	3.8703, 3.2390, 2.1715
YIQ	50.9870, 19.2100, 4.2820

Conversions

Conversions Part 2

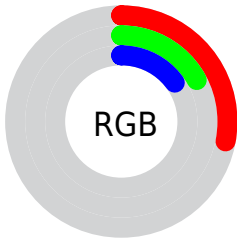
Format	Color
RYB	72, 44, 37
Decimal	4729637
CIELab	20.98, 12.63, 9.52
CIELCh	21, 15.816, 36.993
Yxy	3.2392, 0.4170, 0.3490
Android (android.graphics.Color)	4282919717 (0xFF482B25)
YUV	50.9870, -6.8956, 18.4284
Hunter-Lab	17.9973, 6.8907, 5.4445

Details

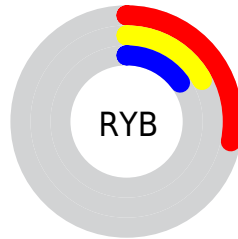
The HunterLab color **17.9973, 6.8907, 5.4445** is a dark color, and the websafe version is hex **663333**. A complement of this color would be **21.8114, -6.4108, -3.3376**, and the grayscale version is **18.2085, -0.9716, 0.9893**.

A 20% lighter version of the original color is **34.4841, 7.5732, 7.6566**, and **4.9687, 8.5090, 3.2106** is the 20% darker color. If you saturate the color by 10%, you get **16.7208, 8.8173, 6.1495**, and if you desaturate by 10%, it is **19.3777, 5.0339, 4.6772**.

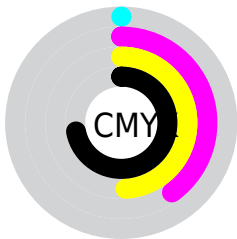
Distribution



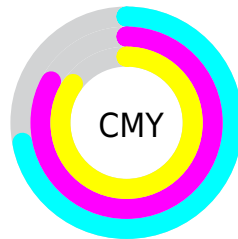
- Red (28%)
- Green (17%)
- Blue (15%)



- Red (28%)
- Yellow (17%)
- Blue (15%)



- Cyan (0%)
- Magenta (40%)
- Yellow (49%)
- Black (72%)



- Cyan (72%)
- Magenta (83%)
- Yellow (85%)

Brightness & Saturation Gradients

These gradients show how the HunterLab color 17.9973, 6.8907, 5.4445 changes by changing the brightness by 10 percent. The first figure shows a shift by +10% for each color and the second figure -10%.

Similar to the brightness gradients but the following saturation gradients show a change of the HunterLab color 17.9973, 6.8907, 5.4445 by changing the saturation by 10% instead.

■ 17.9973, 6.8907,
5.4445

■ 17.9973, 6.8907,
5.4445

■ 114.5257, 7.6501,
15.4628

■ 11.2154, 6.3005,
4.3730

■ 34.4245, 7.6454,
7.7271

■ 3.2895, 16.5584,
2.3026

■ 43.8738, 7.8619,
8.8296

0.0000, NaN, NaN

0.0000, NaN, NaN

■ 54.0578, 7.9921,
9.9243

0.0000, NaN, NaN

■ 64.9266, 8.0468,
11.0184

0.0000, NaN, NaN

■ 76.4397, 8.0341,
12.1166

0.0000, NaN, NaN

0.0000, NaN, NaN

■ 88.5628, 7.9604,

13.2220

0.0000, NaN, NaN

101.2666, 7.8310,
14.3368

17.9973, 6.8907,
5.4445

17.9973, 6.8907,
5.4445

16.7208, 8.8173,
6.1495

19.3777, 5.0339,
4.6772

15.5618, 10.7913,
6.7690

20.8477, 3.2607,
3.8640

14.5367, 12.7674,
7.2761

22.3963, 1.5722,
3.0177

13.6609, 14.6742,
7.6527

24.0141, -0.0350,
2.1472

12.9316, 16.3524,
8.1230

25.6931, -1.5669,
1.2587

■ 12.8419, 16.5600,
8.2030

■ 27.4265, -3.0306,
0.3565

■ 29.2088, -4.4337,
-0.5567

■ 31.0352, -5.7832,
-1.4789

■ 32.9017, -7.0856,
-2.4088

Harmonies

Analogous

The Analogous color harmony consists of three colors that are next to each other on the color wheel.



17.9977, 8.9791, 2.0010



17.9973, 6.8907, 5.4445



17.9977, 2.7312, 7.2599

Triad

The Triadic color harmony groups three colors that are evenly spaced from another and form a triangle on the color wheel.



17.9977, 6.8898, 5.4448



17.9977, -8.5874, 4.0423



17.9977, 0.1588, -9.8901

Complementary

The Complementary color scheme is a pair of colors which are on the opposite of each other on the color wheel.



17.9973, 6.8907, 5.4445



21.8114, -6.4108, -3.3376

Split Complementary

Split-complementary colors differ from the complementary color scheme. The scheme consists of three colors, the original color and two neighbors of the complement color.



17.9977, -4.3781, -8.9356



17.9973, 6.8907, 5.4445



17.9977, -9.1243, -0.1052

Square

The Square scheme is like the rectangle color scheme, but the four colors are evenly spaced on the color wheel.



17.9977, 6.8898, 5.4448



17.9977, -6.1109, 6.6082



17.9977, -7.6614, -5.0389



17.9977, 4.8415, -7.3859

Rectangle

The Rectangle color scheme consists of four colors that form a rectangle on the color wheel.



17.9973, 6.8907, 5.4445



17.9977, -0.4819, 7.6523



17.9977, -7.6614, -5.0389



17.9977, -1.4357, -9.9716

Sweetspot

The Sweet Spot groups the original color and five complimentary colors.



17.9977, 6.8898, 5.4448



30.1820, 1.4255, 3.6389



17.5959, 13.0545, -6.3832



15.4667, 0.8553, 1.9423



65.8695, -3.5146, 3.5788



17.3419, -0.9253, 0.9422

Same Dimension

The Same Dimension uses a secret algorithm to generate beautiful new colors.



17.9977, 6.8898, 5.4448



21.7864, 12.0779, 8.2630



21.8587, -0.3639, 8.7154



12.4424, -0.0208, 1.1108



17.5518, 24.1632, 11.2383



42.1526, 63.3734, 27.0837

Inverse Universe

The Inverse Universe completely reimagines the original color for something new.



21.8114, -6.4108, -3.3376



27.8384, -9.3309, -5.7391



17.4070, 0.4762, -10.1478



12.8139, -1.2893, 0.2611



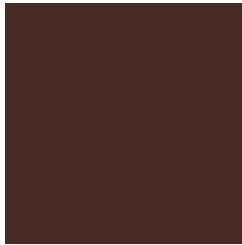
26.4650, -10.4252, -10.5739



64.4386, -24.5454, -27.5562

Previews

White Background



This preview shows how the HunterLab color 17.9973, 6.8907, 5.4445 looks on a white background.

Color Contrast Check

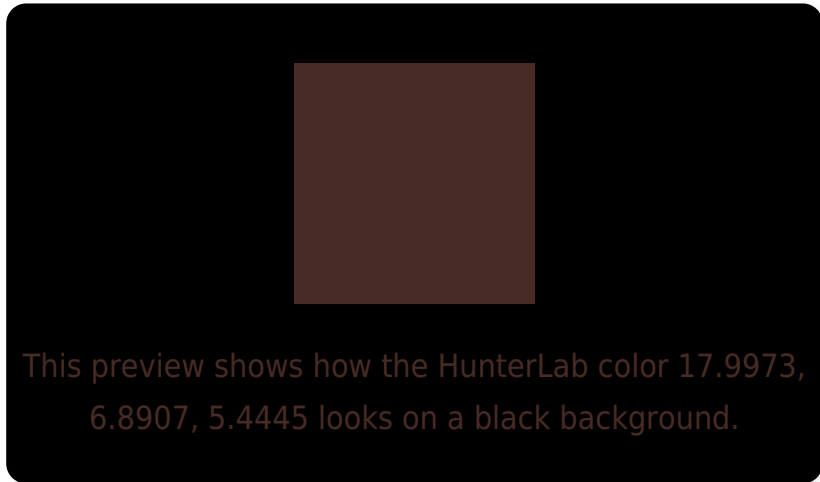
Large Text (above 18pt) WCAG AA ✓ Pass

Any Text WCAG AA ✓ Pass

Large Text (above 18pt) WCAG AAA ✓ Pass

Any Text WCAG AAA ✓ Pass

Black Background



Color Contrast Check

Large Text (above 18pt) WCAG AA × Fail

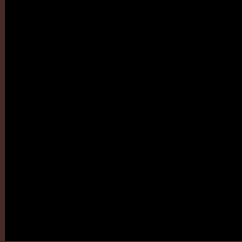
Any Text WCAG AA × Fail

Large Text (above 18pt) WCAG AAA × Fail

Any Text WCAG AAA × Fail

If you want to check with other color combinations, try the [Color Contrast Checker](#).

HunterLab 17.9973, 6.8907, 5.4445 Background



This preview shows how black text looks on a background with the HunterLab color 17.9973, 6.8907, 5.4445.

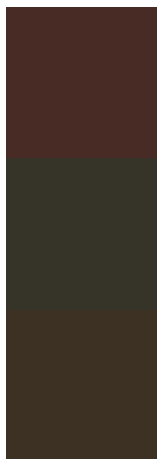


This preview shows how white text looks on a background with the HunterLab color 17.9973, 6.8907,

Color Blindness Simulation

Color vision deficiency is a very complex topic, and I could not describe the different causes any better than Wikipedia does, so if you want to learn more, you should check out their [article about color blindness](#).

Dichromacy



Original Color

17.9973, 6.8907, 5.4445

Protanopia

18.1800, -1.4940, 4.6293

Deuteranopia

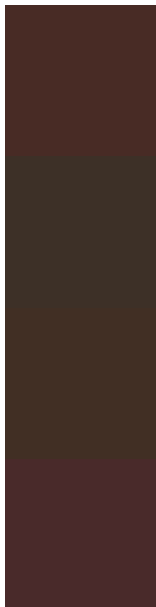
18.2102, 0.8836, 5.8022



Tritanopia

18.0606, 8.4144, 3.1261

Trichromacy



Original Color

17.9973, 6.8907, 5.4445

Protanomaly

18.0347, 1.5729, 4.8301

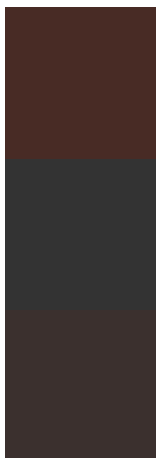
Deuteranomaly

18.1224, 2.9066, 5.7573

Tritanomaly

17.9988, 8.1074, 4.0170

Monochromacy



Original Color

17.9973, 6.8907, 5.4445

Achromatopsia

18.1947, -0.9708, 0.9886

Achromatomaly

18.0027, 1.7481, 2.6111

CSS Examples

Text

The CSS property to change the color of the text to HunterLab 17.9973, 6.8907, 5.4445 is called "color". The color property can be set on classes, ids or directly on the HTML element.

This example shows how text in the color `rgb(72, 43, 37)` looks like.

```
.text, #text, p{  
    color:rgb(72, 43, 37)  
}
```

If you want to add a text shadow in that color use the text-shadow property, you can generate a text shadow directly with our [CSS Text Shadow Generator](#).

Here you see how black text with a 4 pixel rgb(72, 43, 37) colored shadow looks like.

```
.shadow{ text-shadow: 4px 4px 2px rgb(72, 43, 37) }
```

Border

The CSS property to change the border of an element to HunterLab 17.9973, 6.8907, 5.4445 is called "border". The border property can be set on classes, ids or directly on the HTML element.

This example shows the color as border, it can be applied via the CSS property "border" or "border-color".

```
.border, #border, table{ border:4px solid rgb(72, 43, 37) }
```


If only the border color should be changed use the property `border-color`.

```
.border{ border-color:rgb(72, 43, 37) }
```

If you want to add a box shadow in that color use:

Here you see how a box with a 4 pixel `rgb(72, 43, 37)` colored shadow looks like.

```
.boxshadow{ -moz-box-shadow:4px 4px 4px  
4px rgb(72, 43, 37); -webkit-box-  
shadow:4px 4px 4px 4px rgb(72, 43, 37);  
box-shadow:4px 4px 4px 4px rgb(72, 43, 37)  
}
```

Background

The CSS property to change the background color of an element to HunterLab 17.9973, 6.8907, 5.4445 is called "background". The background property can be set on classes, ids or directly on the HTML element.

```
.background, #background, body{  
background: rgb(72, 43, 37) }
```

If only the background color should be changed can be used:

```
.background{ background-color: rgb(72, 43,  
37) }
```

This example shows the color as background, it is applied via the CSS property "background".

To optimize and compress your CSS code, you can use our [online CSS compressor and optimizer](#) based on csstidy. If you want to create a linear or radial gradient as background or border, check our [CSS Gradient Generator](#).

Hey! You found this booklet interesting? Support Converting Colors with the new Membership Option!

The pro membership hides all ads, plus gives you double the colors in the color bucket, and more awesome pro features!

[Learn more, Memberships starting at \\$2.50/m!](#)

**Follow me
on Twitter!**

@ConvertingColor