

Converting Colors

HunterLab(17.9978, 10.6428,
4.8682)

Have a look what the booklet for
HunterLab(17.9978, 10.6428,
4.8682) contains.

HunterLab(17.9366, 10.7426, 4.8957)	3
<i>Conversions</i>	4
<i>Details</i>	6
<i>Harmonies</i>	12
<i>Previews</i>	24
<i>Color Blindness Simulation</i>	28
<i>CSS Examples</i>	31

Color

**HunterLab(17.9366, 10.7426,
4.8957)**

Conversions

Conversions Part 1

Format	Color
Hex	4E2727
RGB	78, 39, 39
RGB Percent	31%, 15%, 15%
CMY	0.6941, 0.8470, 0.8471
CMYK	0.00, 0.50, 0.50, 0.69
HSL	0°, 33%, 23%
HSV	0°, 50%, 31%
XYZ	4.2336, 3.2172, 2.3173
YIQ	50.6610, 23.2440, 8.2680

Conversions

Conversions Part 2

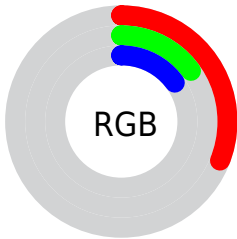
Format	Color
R_{YB}	78, 39, 39
Decimal	5121831
CIE _{Lab}	20.89, 18.21, 8.19
CIE _{LCh}	21, 19.969, 24.200
Yxy	3.2174, 0.4334, 0.3294
Android (android.graphics.Color)	4283311911 (0xFF4E2727)
YUV	50.6610, -5.7489, 23.9763
Hunter-Lab	17.9366, 10.7426, 4.8957

Details

The HunterLab color **17.9366, 10.7426, 4.8957** is a dark color, and the websafe version is hex **663333**. A complement of this color would be **25.3572, -9.6278, -1.3966**, and the grayscale version is **18.0945, -0.9655, 0.9831**.

A 20% lighter version of the original color is **34.3573, 12.1013, 6.9084**, and **5.8316, 9.9869, 3.7683** is the 20% darker color. If you saturate the color by 10%, you get **16.4630, 13.3363, 5.6592**, and if you desaturate by 10%, it is **19.5973, 8.1457, 4.1458**.

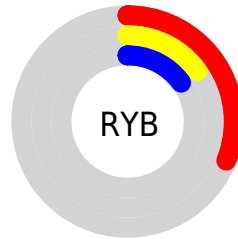
Distribution



Red (31%)

Green (15%)

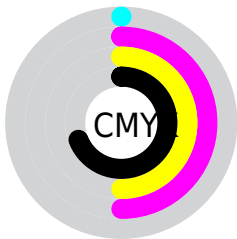
Blue (15%)



Red (31%)

Yellow (15%)

Blue (15%)

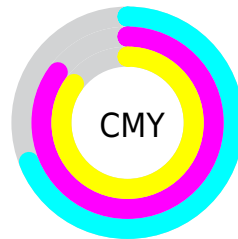


Cyan (0%)

Magenta (50%)

Yellow (50%)

Black (69%)



Cyan (69%)

Magenta (85%)

Yellow (85%)

Brightness & Saturation Gradients

These gradients show how the HunterLab color 17.9366, 10.7426, 4.8957 changes by changing the brightness by 10 percent. The first figure shows a shift by +10% for each color and the second figure -10%.

Similar to the brightness gradients but the following saturation gradients show a change of the HunterLab color 17.9366, 10.7426, 4.8957 by changing the saturation by 10% instead.

■ 17.9366, 10.7426,
4.8957

■ 17.9366, 10.7426,
4.8957

■ 114.4132, 13.9338,
14.2118

■ 11.1636, 9.8073,
3.8794

■ 34.3491, 12.1383,
6.9705

■ 3.1464, 25.0562,
2.2025

■ 43.7922, 12.6488,
7.9859

0.0000, NaN, NaN

0.0000, NaN, NaN

■ 53.9702, 13.0575,
9.0010

0.0000, NaN, NaN

■ 64.8335, 13.3771,
10.0214

0.0000, NaN, NaN

■ 76.3414, 13.6175,
11.0506

0.0000, NaN, NaN

0.0000, NaN, NaN

■ 88.4595, 13.7863,

12.0911

0.0000, NaN, NaN

101.1586, 13.8900,
13.1445

17.9366, 10.7426,
4.8957

17.9366, 10.7426,
4.8957

16.4630, 13.3363,
5.6592

19.5973, 8.1457,
4.1458

15.2056, 15.8274,
6.4033

21.4159, 5.6077,
3.4264

14.1946, 18.0649,
7.0801

23.3687, 3.1551,
2.7453

13.4395, 19.9030,
7.6416

25.4360, 0.7958,
2.1037

12.7271, 21.7936,
8.2239

27.6018, -1.4729,
1.4996

■ 12.7271, 21.7937,
8.2239

■ 29.8530, -3.6587,
0.9294

■ 32.1792, -5.7715,
0.3891

■ 34.5719, -7.8212,
-0.1253

■ 37.0241, -9.8170,
-0.6173

Harmonies

Analogous

The Analogous color harmony consists of three colors that are next to each other on the color wheel.



17.9371, 11.9310, -0.1610



17.9366, 10.7426, 4.8957



17.9371, 6.2524, 7.7603

Triad

The Triadic color harmony groups three colors that are evenly spaced from another and form a triangle on the color wheel.



17.9371, 10.7415, 4.8960



17.9371, -9.3410, 6.2557



17.9371, -2.1019, -13.6140

Complementary

The Complementary color scheme is a pair of colors which are on the opposite of each other on the color wheel.



17.9366, 10.7426, 4.8957



25.3572, -9.6278, -1.3966

Split Complementary

Split-complementary colors differ from the complementary color scheme. The scheme consists of three colors, the original color and two neighbors of the complement color.



17.9371, -7.1833, -10.3114



17.9366, 10.7426, 4.8957



17.9371, -10.9976, 2.0438

Square

The Square scheme is like the rectangle color scheme, but the four colors are evenly spaced on the color wheel.



17.9371, 10.7415, 4.8960



17.9371, -5.4195, 8.3469



17.9371, -10.2625, -4.0938



17.9371, 3.9872, -12.0903

Rectangle

The Rectangle color scheme consists of four colors that form a rectangle on the color wheel.



17.9366, 10.7426, 4.8957



17.9371, 2.2713, 8.6190



17.9371, -10.2625, -4.0938



17.9371, -3.9739, -13.0053

Sweetspot

The Sweet Spot groups the original color and five complimentary colors.



17.9371, 10.7415, 4.8960



32.0563, 2.7676, 3.2428



19.0284, 15.8790, -10.4550



15.8522, 1.5530, 1.6654



66.9319, -3.5713, 3.6365



18.1947, -0.9708, 0.9886

Same Dimension

The Same Dimension uses a secret algorithm to generate beautiful new colors.



17.9371, 10.7415, 4.8960



21.3443, 18.3644, 7.6971



22.0067, 2.4210, 8.4314



13.0511, 0.2438, 1.0243



16.8074, 28.7814, 10.8605



40.9153, 70.0671, 26.4385

Inverse Universe

The Inverse Universe completely reimagines the original color for something new.



25.3572, -9.6278, -1.3966



33.0586, -14.3552, -2.4255



20.1449, -2.0235, -8.8357



13.7520, -1.6260, 0.4481



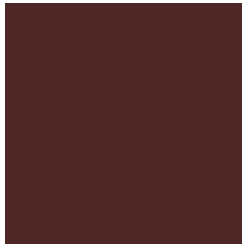
32.3434, -17.1458, -3.4135



78.7363, -41.7393, -8.3103

Previews

White Background



This preview shows how the HunterLab color 17.9366, 10.7426, 4.8957 looks on a white background.

Color Contrast Check

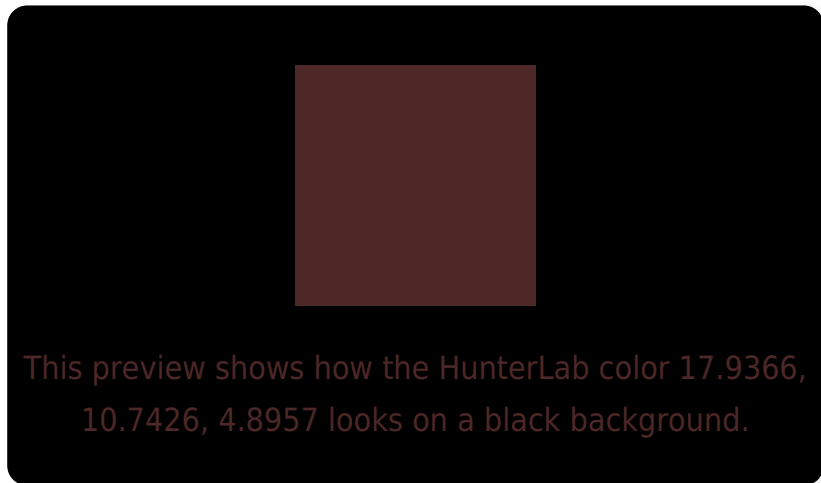
Large Text (above 18pt) WCAG AA ✓ Pass

Any Text WCAG AA ✓ Pass

Large Text (above 18pt) WCAG AAA ✓ Pass

Any Text WCAG AAA ✓ Pass

Black Background



Color Contrast Check

Large Text (above 18pt) WCAG AA × Fail

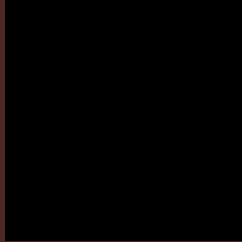
Any Text WCAG AA × Fail

Large Text (above 18pt) WCAG AAA × Fail

Any Text WCAG AAA × Fail

If you want to check with other color combinations, try the [Color Contrast Checker](#).

HunterLab 17.9366, 10.7426, 4.8957 Background



This preview shows how black text looks on a background with the HunterLab color 17.9366, 10.7426, 4.8957.



This preview shows how white text looks on a background with the HunterLab color 17.9366, 10.7426,

Color Blindness Simulation

Color vision deficiency is a very complex topic, and I could not describe the different causes any better than Wikipedia does, so if you want to learn more, you should check out their [article about color blindness](#).

Dichromacy



Original Color

17.9366, 10.7426, 4.8957

Protanopia

18.2044, -1.2094, 3.1106

Deuteranopia

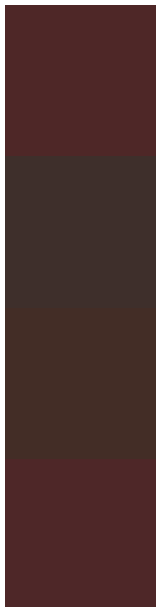
18.1407, 0.6828, 5.4697



Tritanopia

17.9745, 10.9254, 4.3473

Trichromacy



Original Color

17.9366, 10.7426, 4.8957

Protanomaly

17.9766, 2.6904, 3.5862

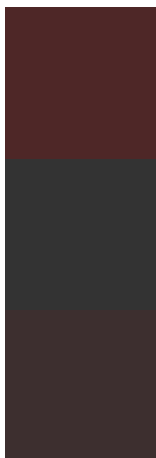
Deuteranomaly

17.9165, 4.5422, 5.0513

Tritanomaly

17.9553, 10.8329, 4.6248

Monochromacy



Original Color

17.9366, 10.7426, 4.8957

Achromatopsia

18.1947, -0.9708, 0.9886

Achromatomaly

17.9732, 2.8508, 2.2534

CSS Examples

Text

The CSS property to change the color of the text to HunterLab 17.9366, 10.7426, 4.8957 is called "color". The color property can be set on classes, ids or directly on the HTML element.

This example shows how text in the color `rgb(78, 39, 39)` looks like.

```
.text, #text, p{  
    color:rgb(78, 39, 39)  
}
```

If you want to add a text shadow in that color use the text-shadow property, you can generate a text shadow directly with our [CSS Text Shadow Generator](#).

Here you see how black text with a 4 pixel rgb(78, 39, 39) colored shadow looks like.

```
.shadow{ text-shadow: 4px 4px 2px rgb(78, 39, 39) }
```

Border

The CSS property to change the border of an element to HunterLab 17.9366, 10.7426, 4.8957 is called "border". The border property can be set on classes, ids or directly on the HTML element.

This example shows the color as border, it can be applied via the CSS property "border" or "border-color".

```
.border, #border, table{ border:4px solid rgb(78, 39, 39) }
```


If only the border color should be changed use the property border-color.

```
.border{ border-color:rgb(78, 39, 39) }
```

If you want to add a box shadow in that color use:

Here you see how a box with a 4 pixel rgb(78, 39, 39) colored shadow looks like.

```
.boxshadow{ -moz-box-shadow:4px 4px 4px  
4px rgb(78, 39, 39); -webkit-box-  
shadow:4px 4px 4px 4px rgb(78, 39, 39);  
box-shadow:4px 4px 4px 4px rgb(78, 39, 39)  
}
```

Background

The CSS property to change the background color of an element to HunterLab 17.9366, 10.7426, 4.8957 is called "background". The background property can be set on classes, ids or directly on the HTML element.

```
.background, #background, body{  
background: rgb(78, 39, 39) }
```

If only the background color should be changed can be used:

```
.background{ background-color: rgb(78, 39,  
39) }
```

This example shows the color as background, it is applied via the CSS property "background".

To optimize and compress your CSS code, you can use our [online CSS compressor and optimizer](#) based on csstidy. If you want to create a linear or radial gradient as background or border, check our [CSS Gradient Generator](#).

Hey! You found this booklet interesting? Support Converting Colors with the new Membership Option!

The pro membership hides all ads, plus gives you double the colors in the color bucket, and more awesome pro features!

[Learn more, Memberships starting at \\$2.50/m!](#)

**Follow me
on Twitter!**

@ConvertingColor